

Converting Colors

CIELCh(81, 6.776, 39.196)

Have a look what the booklet for
CIELCh(81, 6.776, 39.196) contains.

CIELCh(81, 6.899, 42.283)	3
<i>Conversions</i>	4
<i>Details</i>	6
<i>Harmonies</i>	11
<i>Previews</i>	20
<i>Color Blindness Simulation</i>	23
<i>CSS Examples</i>	26

Color

CIELCh(81, 6.899, 42.283)

Conversions

Conversions Part 1

Format	Color
Hex	D7C6C1
RGB	215, 198, 193
RGB Percent	84%, 78%, 76%
CMY	0.1582, 0.2248, 0.2444
CMYK	0.00, 0.08, 0.10, 0.16
HSL	14°, 21%, 80%
HSV	14°, 10%, 84%
XYZ	57.6353, 58.4711, 58.5100
YIQ	202.5130, 11.7370, 2.0490

Conversions

Conversions Part 2

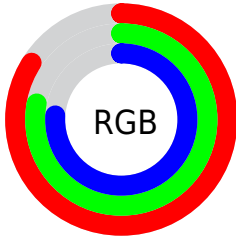
Format	Color
R _Y B	215, 199, 193
Decimal	14141121
CIE Lab	81.00, 5.10, 4.64
CIE LCh	81, 6.899, 42.283
Yxy	58.4711, 0.3301, 0.3349
Android (android.graphics.Color)	4292331201 (0xFFD7C6C1)
YUV	202.5130, -4.6899, 10.9511
Hunter-Lab	76.4664, 0.7253, 8.1594

Details

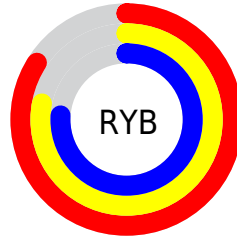
The CIELCh color $81, 6.899, 42.283$ is a light color, and the websafe version is hex `CCCCCC`. A complement of this color would be $83, 6.481, 223.226$, and the grayscale version is $81, 0.010, 296.813$.

A 20% lighter version of the original color is $100, 3.032, 109.926$, and $61, 6.776, 39.196$ is the 20% darker color. If you saturate the color by 10%, you get $76, 14.200, 42.117$, and if you desaturate by 10%, it is $86, 0.156, 39.084$.

Distribution



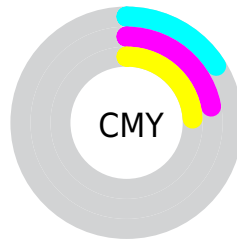
- Red (84%)
- Green (78%)
- Blue (76%)



- Red (84%)
- Yellow (78%)
- Blue (76%)



- Cyan (0%)
- Magenta (8%)
- Yellow (10%)
- Black (16%)



- Cyan (16%)
- Magenta (22%)
- Yellow (24%)

Brightness & Saturation Gradients

These gradients show how the CIELCh color 81, 6.899, 42.283 changes by changing the brightness by 10 percent. The first figure shows a shift by +10% for each color and the second figure -10%.

Similar to the brightness gradients but the following saturation gradients show a change of the CIELCh color 81, 6.899, 42.283 by changing the saturation by 10% instead.

81, 6.899, 42.283

81, 6.899, 42.283

100, 6.899, 42.283

71, 6.899, 42.283

61, 6.899, 42.283

51, 6.899, 42.283

41, 6.899, 42.283

31, 6.899, 42.283

21, 6.899, 42.283

11, 6.899, 42.283

1, 6.899, 42.283

0, 6.899, 42.283

81, 6.899, 42.283

81, 6.899, 42.283

76, 14.200, 42.117

86, 0.156, 39.084

72, 22.110, 42.019

91, 6.084, 223.174

67, 30.663, 42.063

95, 11.544,
218.549

63, 39.861, 42.284

97, 13.518,
198.604

59, 49.646, 42.705

56, 59.847, 43.308

52, 70.054, 43.975

50, 79.345, 44.354

48, 86.398, 44.144

Harmonies

Complementary

The Complementary color scheme is a pair of colors which are on the opposite of each other on the color wheel.



81, 6.899, 42.283



83, 6.481, 223.226

Rectangle

The Rectangle color scheme consists of four colors that form a rectangle on the color wheel.



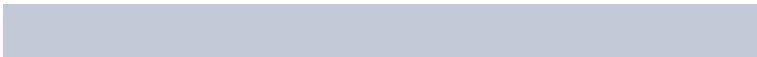
81, 6.899, 42.283



81, 6.899, 92.283



81, 6.899, 222.283



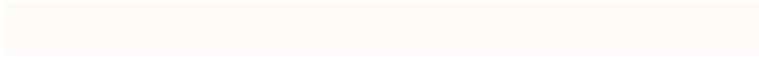
81, 6.899, 272.283

Sweetspot

The Sweet Spot groups the original color and five complimentary colors.



81, 6.898, 42.303



98, 2.255, 42.321



80, 12.212, 331.737



52, 1.715, 42.355



0, 0.000, 0.000



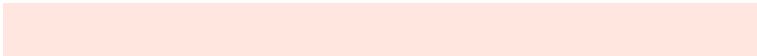
53, 0.007, 296.813

Same Dimension

The Same Dimension uses a secret algorithm to generate beautiful new colors.



81, 6.898, 42.303



93, 9.362, 42.266



84, 8.592, 93.657



43, 3.802, 42.319



38, 72.479, 44.567



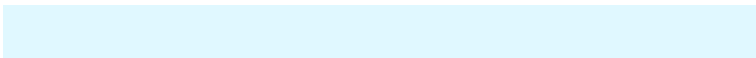
7, 19.110, 32.484

Inverse Universe

The Inverse Universe completely reimagines the original color for something new.



83, 6.481, 223.226



96, 8.689, 223.310



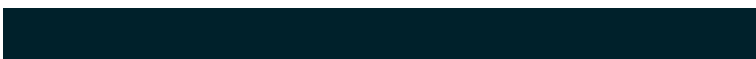
80, 8.633, 276.251



44, 3.591, 223.192



51, 33.114, 241.222



11, 12.688, 232.266

Previews

White Background



This preview shows how the CIELCh color 81, 6.899, 42.283 looks on a white background.

Color Contrast Check

Large Text (above 18pt) WCAG AA × Fail

Any Text WCAG AA × Fail

Large Text (above 18pt) WCAG AAA × Fail

Any Text WCAG AAA × Fail

Black Background



This preview shows how the CIELCh color 81, 6.899, 42.283 looks on a black background.

Color Contrast Check

Large Text (above 18pt) WCAG AA ✓ Pass

Any Text WCAG AA ✓ Pass

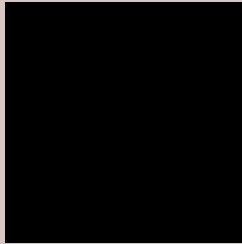
Large Text (above 18pt) WCAG AAA ✓ Pass

Any Text WCAG AAA ✓ Pass

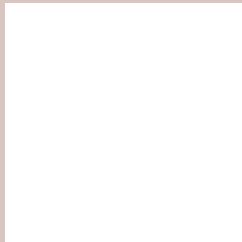
If you want to check with other color combinations, try the [Color Contrast Checker](#).

CIELCh 81, 6.899, 42.283

Background



This preview shows how black text looks on a background with the CIELCh color 81, 6.899, 42.283.



This preview shows how white text looks on a background with the CIELCh color 81, 6.899, 42.283.

Color Blindness Simulation

Color vision deficiency is a very complex topic, and I could not describe the different causes any better than Wikipedia does, so if you want to learn more, you should check out their [article about color blindness](#).

Dichromacy



Original Color

81, 6.899, 42.283

Protanopia

81, 3.863, 74.619

Deuteranopia

81, 11.346, 22.909



Tritanopia
81, 11.340, 335.705

Trichromacy



Original Color
81, 6.899, 42.283

Protanomaly
81, 4.555, 55.022

Deuteranomaly
81, 9.859, 26.249

Tritanomaly
81, 8.519, 350.201

Monochromacy



Original Color
81, 6.899, 42.283

Achromatopsia
81, 0.010, 296.813

Achromatomaly
81, 2.627, 31.010

CSS Examples

Text

The CSS property to change the color of the text to CIELCh 81, 6.899, 42.283 is called "color". The color property can be set on classes, ids or directly on the HTML element.

This example shows how text in the color `rgb(215, 198, 193)` looks like.

```
.text, #text, p{  
    color:rgb(215, 198, 193)  
}
```

If you want to add a text shadow in that color use the text-shadow property, you can generate a text shadow directly with our [CSS Text Shadow Generator](#).

Here you see how black text with a 4 pixel rgb(215, 198, 193) colored shadow looks like.

```
.shadow{ text-shadow: 4px 4px 2px rgb(215, 198, 193) }
```

Border

The CSS property to change the border of an element to CIELCh 81, 6.899, 42.283 is called "border". The border property can be set on classes, ids or directly on the HTML element.

This example shows the color as border, it can be applied via the CSS property "border" or "border-color".

```
.border, #border, table{ border:4px solid rgb(215, 198, 193) }
```

If only the border color should be changed use the property `border-color`.

```
.border{ border-color:rgb(215, 198, 193) }
```

If you want to add a box shadow in that color use:

Here you see how a box with a 4 pixel `rgb(215, 198, 193)` colored shadow looks like.

```
.boxshadow{ -moz-box-shadow:4px 4px 4px  
4px rgb(215, 198, 193); -webkit-box-  
shadow:4px 4px 4px 4px rgb(215, 198, 193);  
box-shadow:4px 4px 4px 4px rgb(215, 198,  
193) }
```

Background

The CSS property to change the background color of an element to CIELCh 81, 6.899, 42.283 is called "background". The background property can be set on classes, ids or directly on the HTML element.

```
.background, #background, body{  
background: rgb(215, 198, 193) }
```

If only the background color should be changed can be used:

```
.background{ background-color: rgb(215,  
198, 193) }
```

This example shows the color as background, it is applied via the CSS property "background".

To optimize and compress your CSS code, you can use our [online CSS compressor and optimizer](#) based on csstidy. If you want to create a linear or radial gradient as background or border, check our [CSS Gradient Generator](#).

Hey! You found this booklet interesting? Support Converting Colors with the new Membership Option!

The pro membership hides all ads, plus gives you double the colors in the color bucket, and more awesome pro features!

[Learn more, Memberships starting at \\$2.50/m!](#)

**Follow me
on Twitter!**

@ConvertingColor