

Converting Colors

CIELCh(81, 7.167, 358.384)

Have a look what the booklet for
CIELCh(81, 7.167, 358.384) contains.

CIELCh(81, 7.168, 358.241)	3
<i>Conversions</i>	4
<i>Details</i>	6
<i>Harmonies</i>	11
<i>Previews</i>	20
<i>Color Blindness Simulation</i>	23
<i>CSS Examples</i>	26

Color

CIELCh(81, 7.168, 358.241)

Conversions

Conversions Part 1

Format	Color
Hex	D7C5CA
RGB	215, 197, 202
RGB Percent	84%, 77%, 79%
CMY	0.1579, 0.2285, 0.2089
CMYK	0.00, 0.08, 0.06, 0.16
HSL	343°, 18%, 81%
HSV	343°, 8%, 84%
XYZ	58.4813, 58.4711, 63.9167
YIQ	202.9520, 9.1230, 5.3710

Conversions

Conversions Part 2

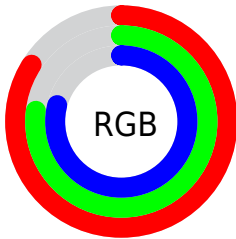
Format	Color
RYB	215, 197, 202
Decimal	14140874
CIELab	81.00, 7.16, -0.22
CIElCh	81, 7.168, 358.241
Yxy	58.4711, 0.3233, 0.3233
Android (android.graphics.Color)	4292330954 (0xFFD7C5CA)
YUV	202.9520, -0.4693, 10.5661
Hunter-Lab	76.4664, 2.7001, 3.9672

Details

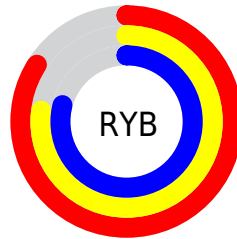
The CIELCh color $81, 7.168, 358.241$ is a light color, and the websafe version is hex `CCCCCC`. A complement of this color would be $84, 6.980, 176.832$, and the grayscale version is $82, 0.010, 296.813$.

A 20% lighter version of the original color is $100, 0.630, 323.973$, and $61, 7.240, 357.311$ is the 20% darker color. If you saturate the color by 10%, you get $75, 16.052, 359.369$, and if you desaturate by 10%, it is $87, 1.349, 177.767$.

Distribution



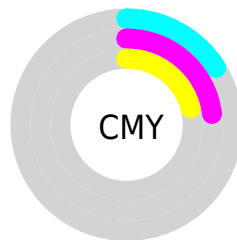
- Red (84%)
- Green (77%)
- Blue (79%)



- Red (84%)
- Yellow (77%)
- Blue (79%)



- Cyan (0%)
- Magenta (8%)
- Yellow (6%)
- Black (16%)



- Cyan (16%)
- Magenta (23%)
- Yellow (21%)


Brightness & Saturation Gradients

These gradients show how the CIELCh color 81, 7.168, 358.241 changes by changing the brightness by 10 percent. The first figure shows a shift by +10% for each color and the second figure -10%.

Similar to the brightness gradients but the following saturation gradients show a change of the CIELCh color 81, 7.168, 358.241 by changing the saturation by 10% instead.

 81, 7.168, 358.241

 81, 7.168, 358.241

 100, 7.168,
358.241

 71, 7.168, 358.241

 61, 7.168, 358.241

 51, 7.168, 358.241

 41, 7.168, 358.241

 31, 7.168, 358.241

 21, 7.168, 358.241

 11, 7.168, 358.241

 1, 7.168, 358.241

 0, 7.168, 358.241

81, 7.168, 358.241

81, 7.168, 358.241

75, 16.052,
359.369

87, 1.349, 177.767

70, 25.238, 0.646

93, 9.468, 176.619

64, 34.581, 2.164

97, 14.163,
184.445

60, 43.849, 4.013

97, 13.498,
198.605

55, 52.706, 6.315

51, 60.748, 9.222

48, 67.597, 12.904

47, 73.082, 17.489

45, 77.474, 22.866

Harmonies

Complementary

The Complementary color scheme is a pair of colors which are on the opposite of each other on the color wheel.



81, 7.168, 358.241



84, 6.980, 176.832

Rectangle

The Rectangle color scheme consists of four colors that form a rectangle on the color wheel.



81, 7.168, 358.241



81, 7.168, 48.241



81, 7.168, 178.241



81, 7.168, 228.241

Sweetspot

The Sweet Spot groups the original color and five complimentary colors.



81, 7.166, 358.251



98, 2.918, 357.607



81, 10.681, 316.592



52, 2.215, 357.725



0, 0.000, 0.000



53, 0.007, 296.813

Same Dimension

The Same Dimension uses a secret algorithm to generate beautiful new colors.



81, 7.166, 358.251



93, 9.869, 358.438



82, 5.629, 41.101



42, 4.855, 358.364



36, 65.550, 22.739



5, 22.212, 7.346

Inverse Universe

The Inverse Universe completely reimagines the original color for something new.



81, 7.166, 358.251



93, 9.869, 358.438



84, 5.350, 221.832



42, 4.855, 358.364



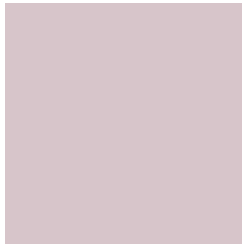
36, 65.550, 22.739



5, 22.212, 7.346

Previews

White Background



This preview shows how the CIELCh color 81, 7.168, 358.241 looks on a white background.

Color Contrast Check

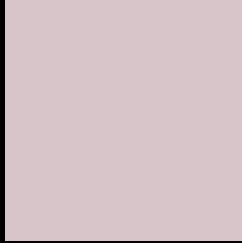
Large Text (above 18pt) WCAG AA × Fail

Any Text WCAG AA × Fail

Large Text (above 18pt) WCAG AAA × Fail

Any Text WCAG AAA × Fail

Black Background



This preview shows how the CIELCh color 81, 7.168, 358.241 looks on a black background.

Color Contrast Check

Large Text (above 18pt) WCAG AA ✓ Pass

Any Text WCAG AA ✓ Pass

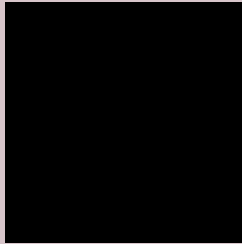
Large Text (above 18pt) WCAG AAA ✓ Pass

Any Text WCAG AAA ✓ Pass

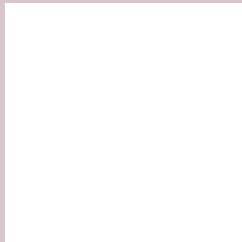
If you want to check with other color combinations, try the [Color Contrast Checker](#).

CIELCh 81, 7.168, 358.241

Background



This preview shows how black text looks on a background with the CIELCh color 81, 7.168, 358.241.



This preview shows how white text looks on a background with the CIELCh color 81, 7.168, 358.241.

Color Blindness Simulation

Color vision deficiency is a very complex topic, and I could not describe the different causes any better than Wikipedia does, so if you want to learn more, you should check out their [article about color blindness](#).

Dichromacy



Original Color

81, 7.168, 358.241

Protanopia

81, 2.598, 324.448

Deuteranopia

81, 9.988, 358.410



Tritanopia
81, 11.467, 332.492

Trichromacy



Original Color
81, 7.168, 358.241

Protanomaly
81, 3.942, 347.017

Deuteranomaly
81, 8.751, 358.788

Tritanomaly
81, 9.729, 339.292

Monochromacy



Original Color
81, 7.168, 358.241

Achromatopsia
82, 0.010, 296.813

Achromatomaly
81, 2.452, 353.760

CSS Examples

Text

The CSS property to change the color of the text to CIELCh 81, 7.168, 358.241 is called "color". The color property can be set on classes, ids or directly on the HTML element.

This example shows how text in the color `rgb(215, 197, 202)` looks like.

```
.text, #text, p{  
    color:rgb(215, 197, 202)  
}
```

If you want to add a text shadow in that color use the text-shadow property, you can generate a text shadow directly with our [CSS Text Shadow Generator](#).

Here you see how black text with a 4 pixel rgb(215, 197, 202) colored shadow looks like.

```
.shadow{ text-shadow: 4px 4px 2px rgb(215, 197, 202) }
```

Border

The CSS property to change the border of an element to CIELCh 81, 7.168, 358.241 is called "border". The border property can be set on classes, ids or directly on the HTML element.

This example shows the color as border, it can be applied via the CSS property "border" or "border-color".

```
.border, #border, table{ border:4px solid rgb(215, 197, 202) }
```

If only the border color should be changed use the property border-color.

```
.border{ border-color:rgb(215, 197, 202) }
```

If you want to add a box shadow in that color use:

Here you see how a box with a 4 pixel rgb(215, 197, 202) colored shadow looks like.

```
.boxshadow{ -moz-box-shadow:4px 4px 4px  
4px rgb(215, 197, 202); -webkit-box-  
shadow:4px 4px 4px 4px rgb(215, 197, 202);  
box-shadow:4px 4px 4px 4px rgb(215, 197,  
202) }
```

Background

The CSS property to change the background color of an element to CIELCh 81, 7.168, 358.241 is called "background". The background property can be set on classes, ids or directly on the HTML element.

```
.background, #background, body{  
background: rgb(215, 197, 202) }
```

If only the background color should be changed can be used:

```
.background{ background-color: rgb(215,  
197, 202) }
```

This example shows the color as background, it is applied via the CSS property "background".

To optimize and compress your CSS code, you can use our [online CSS compressor and optimizer](#) based on csstidy. If you want to create a linear or radial gradient as background or border, check our [CSS Gradient Generator](#).

Hey! You found this booklet interesting? Support Converting Colors with the new Membership Option!

The pro membership hides all ads, plus gives you double the colors in the color bucket, and more awesome pro features!

[Learn more, Memberships starting at \\$2.50/m!](#)

**Follow me
on Twitter!**

@ConvertingColor