

Converting Colors

CIELCh(81, 8.208, 12.636)

Have a look what the booklet for
CIELCh(81, 8.208, 12.636) contains.

CIELCh(81, 8.269, 12.657)	3
<i>Conversions</i>	4
<i>Details</i>	6
<i>Harmonies</i>	11
<i>Previews</i>	20
<i>Color Blindness Simulation</i>	23
<i>CSS Examples</i>	26

Color

CIELCh(81, 8.269, 12.657)

Conversions

Conversions Part 1

Format	Color
Hex	DAC4C6
RGB	218, 196, 198
RGB Percent	85%, 77%, 78%
CMY	0.1450, 0.2313, 0.2235
CMYK	0.00, 0.10, 0.09, 0.15
HSL	355°, 23%, 81%
HSV	355°, 10%, 85%
XYZ	58.8548, 58.4711, 61.6182
YIQ	202.8060, 12.4700, 5.2860

Conversions

Conversions Part 2

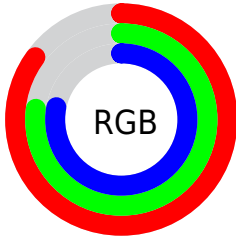
Format	Color
R _Y B	218, 196, 198
Decimal	14337222
CIE Lab	81.00, 8.07, 1.81
CIE LCh	81, 8.269, 12.657
Yxy	58.4711, 0.3289, 0.3268
Android (android.graphics.Color)	4292527302 (0xFFDAC4C6)
YUV	202.8060, -2.3694, 13.3251
Hunter-Lab	76.4664, 3.5719, 5.7494

Details

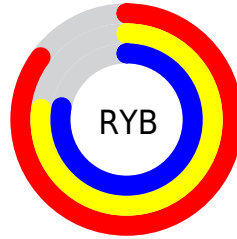
The CIELCh color **81, 8.269, 12.657** is a light color, and the websafe version is hex **CCCCCC**. A complement of this color would be **85, 7.840, 191.213**, and the grayscale version is **82, 0.010, 296.813**.

A 20% lighter version of the original color is **100, 1.250, 324.238**, and **61, 8.408, 12.563** is the 20% darker color. If you saturate the color by 10%, you get **75, 17.016, 13.711**, and if you desaturate by 10%, it is **87, 0.074, 4.106**.

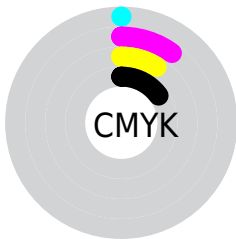
Distribution



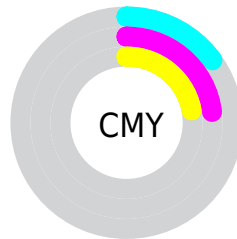
- Red (85%)
- Green (77%)
- Blue (78%)



- Red (85%)
- Yellow (77%)
- Blue (78%)



- Cyan (0%)
- Magenta (10%)
- Yellow (9%)
- Black (15%)



- Cyan (15%)
- Magenta (23%)
- Yellow (22%)

Brightness & Saturation Gradients

These gradients show how the CIELCh color 81, 8.269, 12.657 changes by changing the brightness by 10 percent. The first figure shows a shift by +10% for each color and the second figure -10%.

Similar to the brightness gradients but the following saturation gradients show a change of the CIELCh color 81, 8.269, 12.657 by changing the saturation by 10% instead.



81, 8.269, 12.657

81, 8.269, 12.657

75, 17.016, 13.711

87, 0.074, 4.106

69, 26.294, 14.969

93, 7.581, 191.299

64, 36.015, 16.542

97, 12.445,
198.675

59, 46.007, 18.539

55, 56.002, 21.088

51, 65.665, 24.313

48, 74.659, 28.252

46, 82.642, 32.696

46, 89.079, 36.770

Harmonies

Complementary

The Complementary color scheme is a pair of colors which are on the opposite of each other on the color wheel.



81, 8.269, 12.657



85, 7.840, 191.213

Rectangle

The Rectangle color scheme consists of four colors that form a rectangle on the color wheel.



81, 8.269, 12.657



81, 8.269, 62.657



81, 8.269, 192.657



81, 8.269, 242.657

Sweetspot

The Sweet Spot groups the original color and five complimentary colors.



81, 8.267, 12.669



98, 2.727, 11.903



81, 13.732, 322.186



52, 2.073, 12.018



0, 0.000, 0.000



53, 0.007, 296.813

Same Dimension

The Same Dimension uses a secret algorithm to generate beautiful new colors.



81, 8.267, 12.669



92, 11.242, 12.868



83, 6.756, 62.801



43, 4.664, 12.606



36, 74.491, 36.100



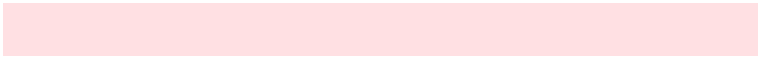
5, 23.735, 16.351

Inverse Universe

The Inverse Universe completely reimagines the original color for something new.



81, 8.267, 12.669



92, 11.242, 12.868



83, 6.489, 245.098



43, 4.664, 12.606



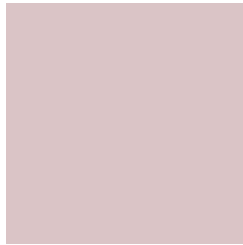
36, 74.491, 36.100



5, 23.735, 16.351

Previews

White Background



This preview shows how the CIELCh color 81, 8.269, 12.657 looks on a white background.

Color Contrast Check

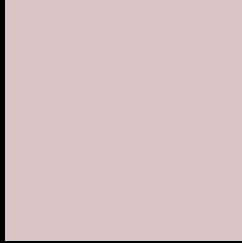
Large Text (above 18pt) WCAG AA × Fail

Any Text WCAG AA × Fail

Large Text (above 18pt) WCAG AAA × Fail

Any Text WCAG AAA × Fail

Black Background



This preview shows how the CIELCh color 81, 8.269, 12.657 looks on a black background.

Color Contrast Check

Large Text (above 18pt) WCAG AA ✓ Pass

Any Text WCAG AA ✓ Pass

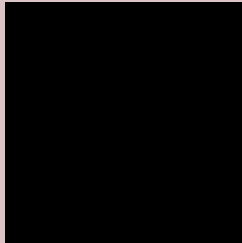
Large Text (above 18pt) WCAG AAA ✓ Pass

Any Text WCAG AAA ✓ Pass

If you want to check with other color combinations, try the [Color Contrast Checker](#).

CIELCh 81, 8.269, 12.657

Background



This preview shows how black text looks on a background with the CIELCh color 81, 8.269, 12.657.



This preview shows how white text looks on a background with the CIELCh color 81, 8.269, 12.657.

Color Blindness Simulation

Color vision deficiency is a very complex topic, and I could not describe the different causes any better than Wikipedia does, so if you want to learn more, you should check out their [article about color blindness](#).

Dichromacy



Original Color

81, 8.269, 12.657

Protanopia

81, 1.836, 19.246

Deuteranopia

81, 10.216, 11.259



Tritanopia
81, 12.433, 340.621

Trichromacy



Original Color
81, 8.269, 12.657

Protanomaly
81, 4.065, 19.584

Deuteranomaly
81, 9.841, 10.879

Tritanomaly
81, 10.327, 349.349

Monochromacy



Original Color
81, 8.269, 12.657

Achromatopsia
82, 0.010, 296.813

Achromatomaly
81, 2.994, 9.268

CSS Examples

Text

The CSS property to change the color of the text to CIELCh 81, 8.269, 12.657 is called "color". The color property can be set on classes, ids or directly on the HTML element.

This example shows how text in the color `rgb(218, 196, 198)` looks like.

```
.text, #text, p{  
    color:rgb(218, 196, 198)  
}
```

If you want to add a text shadow in that color use the text-shadow property, you can generate a text shadow directly with our [CSS Text Shadow Generator](#).

Here you see how black text with a 4 pixel rgb(218, 196, 198) colored shadow looks like.

```
.shadow{ text-shadow: 4px 4px 2px rgb(218, 196, 198) }
```

Border

The CSS property to change the border of an element to CIELCh 81, 8.269, 12.657 is called "border". The border property can be set on classes, ids or directly on the HTML element.

This example shows the color as border, it can be applied via the CSS property "border" or "border-color".

```
.border, #border, table{ border:4px solid rgb(218, 196, 198) }
```

If only the border color should be changed use the property `border-color`.

```
.border{ border-color:rgb(218, 196, 198) }
```

If you want to add a box shadow in that color use:

Here you see how a box with a 4 pixel `rgb(218, 196, 198)` colored shadow looks like.

```
.boxshadow{ -moz-box-shadow:4px 4px 4px  
4px rgb(218, 196, 198); -webkit-box-  
shadow:4px 4px 4px 4px rgb(218, 196, 198);  
box-shadow:4px 4px 4px 4px rgb(218, 196,  
198) }
```

Background

The CSS property to change the background color of an element to CIELCh 81, 8.269, 12.657 is called "background". The background property can be set on classes, ids or directly on the HTML element.

```
.background, #background, body{  
background: rgb(218, 196, 198) }
```

If only the background color should be changed can be used:

```
.background{ background-color: rgb(218,  
196, 198) }
```

This example shows the color as background, it is applied via the CSS property "background".

To optimize and compress your CSS code, you can use our [online CSS compressor and optimizer](#) based on csstidy. If you want to create a linear or radial gradient as background or border, check our [CSS Gradient Generator](#).

Hey! You found this booklet interesting? Support Converting Colors with the new Membership Option!

The pro membership hides all ads, plus gives you double the colors in the color bucket, and more awesome pro features!

[Learn more, Memberships starting at \\$2.50/m!](#)

**Follow me
on Twitter!**

@ConvertingColor