

# Converting Colors

CIELCh(81, 8.504, 2.180)

Have a look what the booklet for  
CIELCh(81, 8.504, 2.180) contains.

<b>CIELCh(81, 8.583, 2.095)</b> .....	3
<i><b>Conversions</b></i> .....	4
<i><b>Details</b></i> .....	6
<i><b>Harmonies</b></i> .....	11
<i><b>Previews</b></i> .....	20
<i><b>Color Blindness Simulation</b></i> .....	23
<i><b>CSS Examples</b></i> .....	26

# **Color**

**CIELCh(81, 8.583, 2.095)**

# Conversions

## Conversions Part 1

Format	Color
Hex	DAC4C9
RGB	218, 196, 201
RGB Percent	85%, 77%, 79%
CMY	0.1459, 0.2321, 0.2125
CMYK	0.00, 0.10, 0.08, 0.15
HSL	346°, 23%, 81%
HSV	346°, 10%, 85%
XYZ	59.0660, 58.4711, 63.3074
YIQ	203.1480, 11.5070, 6.2190

# Conversions

## Conversions Part 2

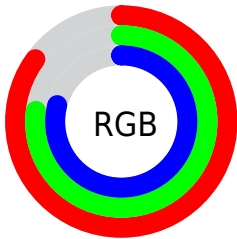
Format	Color
R <sub>Y</sub> B	218, 196, 201
Decimal	14337225
CIE Lab	81.00, 8.58, 0.31
CIE LCh	81, 8.583, 2.095
Yxy	58.4711, 0.3266, 0.3233
Android (android.graphics.Color)	4292527305 (0xFFDAC4C9)
YUV	203.1480, -1.0590, 13.0252
Hunter-Lab	76.4664, 4.0650, 4.4396

# Details

The CIELCh color  $81, 8.583, 2.095$  is a light color, and the websafe version is hex `CCCCCC`. A complement of this color would be  $85, 8.271, 180.350$ , and the grayscale version is  $82, 0.010, 296.813$ .

A 20% lighter version of the original color is  $100, 1.250, 324.238$ , and  $61, 8.739, 1.574$  is the 20% darker color. If you saturate the color by 10%, you get  $75, 17.490, 3.249$ , and if you desaturate by 10%, it is  $87, 0.085, 354.930$ .

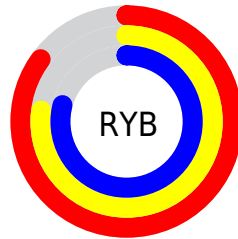
# Distribution



Red (85%)

Green (77%)

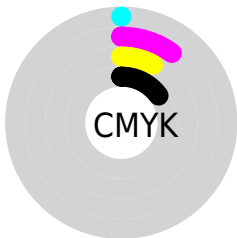
Blue (79%)



Red (85%)

Yellow (77%)

Blue (79%)

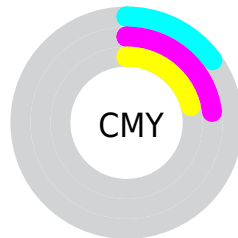


Cyan (0%)

Magenta (10%)

Yellow (8%)

Black (15%)



Cyan (15%)

Magenta (23%)

Yellow (21%)

# Brightness & Saturation Gradients

These gradients show how the CIELCh color 81, 8.583, 2.095 changes by changing the brightness by 10 percent. The first figure shows a shift by +10% for each color and the second figure -10%.

Similar to the brightness gradients but the following saturation gradients show a change of the CIELCh color 81, 8.583, 2.095 by changing the saturation by 10% instead.



81, 8.583, 2.095

81, 8.583, 2.095

100, 8.583, 2.095

71, 8.583, 2.095

61, 8.583, 2.095

51, 8.583, 2.095

41, 8.583, 2.095

31, 8.583, 2.095

21, 8.583, 2.095

11, 8.583, 2.095

1, 8.583, 2.095

0, 8.583, 2.095

81, 8.583, 2.095

81, 8.583, 2.095

75, 17.490, 3.249

87, 0.085, 354.930

70, 26.744, 4.584

93, 7.978, 180.454

64, 36.203, 6.196

97, 12.782,  
190.102

59, 45.634, 8.185

97, 12.515,  
198.670

55, 54.706, 10.684

51, 63.032, 13.852

49, 70.279, 17.837

47, 76.332, 22.691

46, 81.506, 28.008

# Harmonies

# Complementary

The Complementary color scheme is a pair of colors which are on the opposite of each other on the color wheel.



81, 8.583, 2.095



85, 8.271, 180.350

# Rectangle

The Rectangle color scheme consists of four colors that form a rectangle on the color wheel.



81, 8.583, 2.095



81, 8.583, 52.095



81, 8.583, 182.095



81, 8.583, 232.095

# Sweetspot

The Sweet Spot groups the original color and five complimentary colors.



81, 8.581, 2.105



98, 2.849, 1.268



81, 13.219, 318.225



52, 2.163, 1.388



0, 0.000, 0.000



53, 0.007, 296.813



# Same Dimension

The Same Dimension uses a secret algorithm to generate beautiful new colors.



81, 8.581, 2.105



92, 11.647, 2.325



82, 6.771, 46.863



43, 4.844, 2.033



36, 68.247, 27.059



5, 23.769, 10.450





# Inverse Universe

The Inverse Universe completely reimagines the original color for something new.



81, 8.581, 2.105



92, 11.647, 2.325



84, 6.389, 228.148



43, 4.844, 2.033



36, 68.247, 27.059

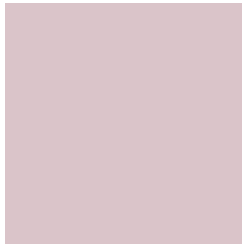


5, 23.769, 10.450



# Previews

## White Background



This preview shows how the CIELCh color 81, 8.583, 2.095 looks on a white background.

## Color Contrast Check

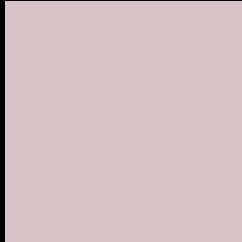
Large Text (above 18pt) WCAG AA × Fail

Any Text WCAG AA × Fail

Large Text (above 18pt) WCAG AAA × Fail

Any Text WCAG AAA × Fail

# Black Background



This preview shows how the CIELCh color 81, 8.583, 2.095 looks on a black background.

## Color Contrast Check

Large Text (above 18pt) WCAG AA ✓ Pass

Any Text WCAG AA ✓ Pass

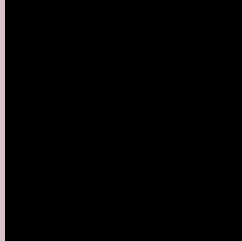
Large Text (above 18pt) WCAG AAA ✓ Pass

Any Text WCAG AAA ✓ Pass

If you want to check with other color combinations, try the [Color Contrast Checker](#).

**CIELCh 81, 8.583, 2.095**

## **Background**



This preview shows how black text looks on a background with the CIELCh color 81, 8.583, 2.095.



This preview shows how white text looks on a background with the CIELCh color 81, 8.583, 2.095.

# Color Blindness Simulation

Color vision deficiency is a very complex topic, and I could not describe the different causes any better than Wikipedia does, so if you want to learn more, you should check out their [article about color blindness](#).

## Dichromacy



### Original Color


81, 8.583, 2.095

### Protanopia

81, 2.180, 332.315

### Deuteranopia

81, 10.173, 2.020



**Tritanopia**  
81, 12.501, 337.622



# Trichromacy



## Original Color

81, 8.583, 2.095

## Protanomaly

81, 4.583, 352.079

## Deuteranomaly

81, 9.817, 1.296

## Tritanomaly

81, 10.892, 344.535

# Monochromacy



## Original Color

81, 8.583, 2.095

## Achromatopsia

82, 0.010, 296.813

## Achromatomaly

81, 3.133, 359.709

# CSS Examples

## Text

The CSS property to change the color of the text to CIELCh 81, 8.583, 2.095 is called "color". The color property can be set on classes, ids or directly on the HTML element.

This example shows how text in the color `rgb(218, 196, 201)` looks like.

```
.text, #text, p{  
    color:rgb(218, 196, 201)  
}
```

If you want to add a text shadow in that color use the text-shadow property, you can generate a text shadow directly with our [CSS Text Shadow Generator](#).

Here you see how black text with a 4 pixel rgb(218, 196, 201) colored shadow looks like.

```
.shadow{ text-shadow: 4px 4px 2px rgb(218, 196, 201) }
```

## Border

The CSS property to change the border of an element to CIELCh 81, 8.583, 2.095 is called "border". The border property can be set on classes, ids or directly on the HTML element.

This example shows the color as border, it can be applied via the CSS property "border" or "border-color".

```
.border, #border, table{ border:4px solid rgb(218, 196, 201) }
```

If only the border color should be changed use the property `border-color`.

```
.border{ border-color:rgb(218, 196, 201) }
```

If you want to add a box shadow in that color use:

Here you see how a box with a 4 pixel `rgb(218, 196, 201)` colored shadow looks like.

```
.boxshadow{ -moz-box-shadow:4px 4px 4px  
4px rgb(218, 196, 201); -webkit-box-  
shadow:4px 4px 4px 4px rgb(218, 196, 201);  
box-shadow:4px 4px 4px 4px rgb(218, 196,  
201) }
```

# Background

The CSS property to change the background color of an element to CIELCh 81, 8.583, 2.095 is called "background". The background property can be set on classes, ids or directly on the HTML element.

```
.background, #background, body{  
background: rgb(218, 196, 201) }
```

If only the background color should be changed can be used:

```
.background{ background-color: rgb(218,  
196, 201) }
```

This example shows the color as background, it is applied via the CSS property "background".

To optimize and compress your CSS code, you can use our [online CSS compressor and optimizer](#) based on csstidy. If you want to create a linear or radial gradient as background or border, check our [CSS Gradient Generator](#).

Hey! You found this booklet interesting? Support Converting Colors with the new Membership Option!

The pro membership hides all ads, plus gives you double the colors in the color bucket, and more awesome pro features!

**[Learn more, Memberships starting at \\$2.50/m!](#)**

**Follow me  
on Twitter!**

@ConvertingColor