

Converting Colors

CIELCh(81, 8.531, 41.671)

Have a look what the booklet for
CIELCh(81, 8.531, 41.671) contains.

CIELCh(81, 8.540, 41.670)	3
<i>Conversions</i>	4
<i>Details</i>	6
<i>Harmonies</i>	11
<i>Previews</i>	20
<i>Color Blindness Simulation</i>	23
<i>CSS Examples</i>	26

Color

CIELCh(81, 8.540, 41.670)

Conversions

Conversions Part 1

Format	Color
Hex	DAC5BF
RGB	218, 197, 191
RGB Percent	85%, 77%, 75%
CMY	0.1459, 0.2282, 0.2517
CMYK	0.00, 0.10, 0.12, 0.15
HSL	13°, 27%, 80%
HSV	13°, 12%, 85%
XYZ	58.1579, 58.4711, 57.3986
YIQ	202.5950, 14.4420, 2.5860

Conversions

Conversions Part 2

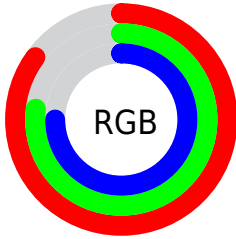
Format	Color
R _Y B	218, 199, 191
Decimal	14337471
CIE Lab	81.00, 6.38, 5.68
CIE LCh	81, 8.540, 41.670
Yxy	58.4711, 0.3342, 0.3360
Android (android.graphics.Color)	4292527551 (0xFFDAC5BF)
YUV	202.5950, -5.7163, 13.5102
Hunter-Lab	76.4664, 1.9451, 9.0212

Details

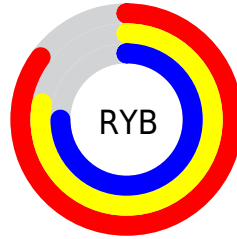
The CIELCh color $81, 8.540, 41.670$ is a light color, and the websafe version is hex `CCCCCC`. A complement of this color would be $83, 7.906, 222.690$, and the grayscale version is $81, 0.010, 296.813$.

A 20% lighter version of the original color is $100, 3.555, 104.188$, and $61, 8.539, 39.179$ is the 20% darker color. If you saturate the color by 10%, you get $76, 16.077, 41.539$, and if you desaturate by 10%, it is $86, 1.583, 41.667$.

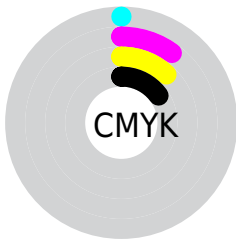
Distribution



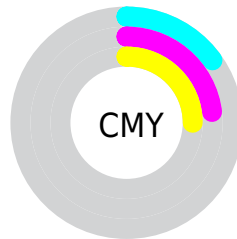
- Red (85%)
- Green (77%)
- Blue (75%)



- Red (85%)
- Yellow (78%)
- Blue (75%)



- Cyan (0%)
- Magenta (10%)
- Yellow (12%)
- Black (15%)

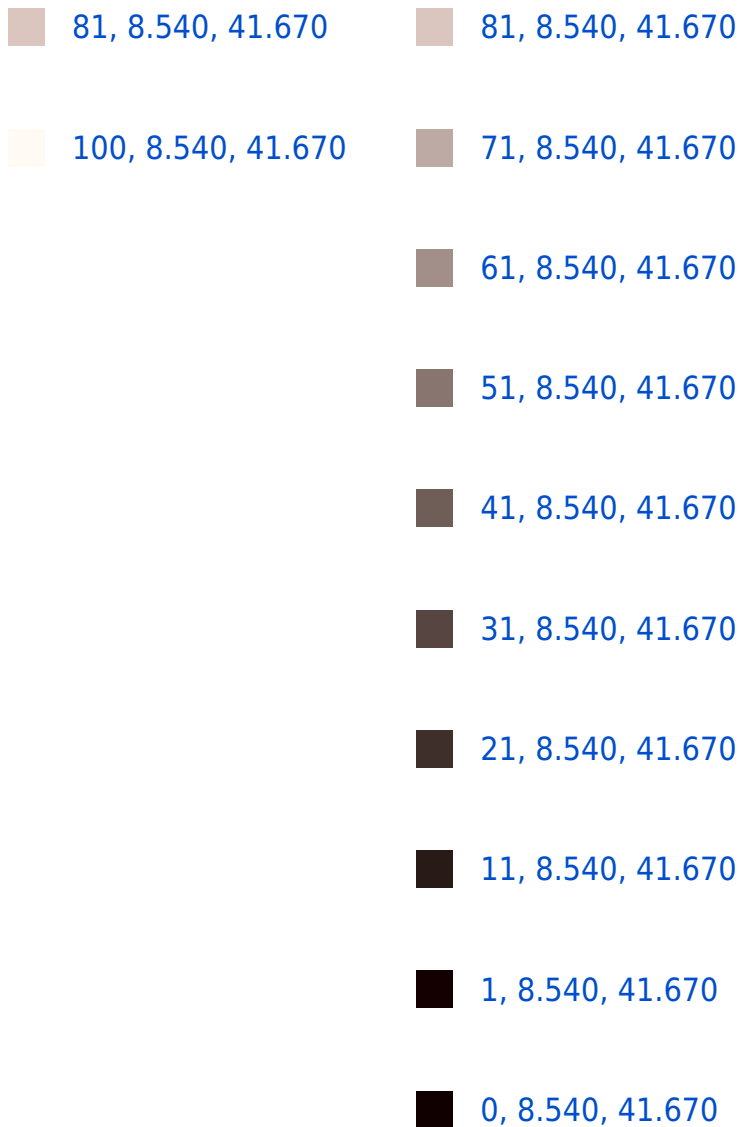


- Cyan (15%)
- Magenta (23%)
- Yellow (25%)

Brightness & Saturation Gradients

These gradients show how the CIELCh color 81, 8.540, 41.670 changes by changing the brightness by 10 percent. The first figure shows a shift by +10% for each color and the second figure -10%.

Similar to the brightness gradients but the following saturation gradients show a change of the CIELCh color 81, 8.540, 41.670 by changing the saturation by 10% instead.



81, 8.540, 41.670

81, 8.540, 41.670

76, 16.077, 41.539

86, 1.583, 41.667

72, 24.243, 41.498

91, 4.849, 222.492

67, 33.067, 41.612

96, 10.625,
219.818

63, 42.539, 41.915

97, 12.513,
198.670

59, 52.579, 42.424

56, 62.974, 43.111

52, 73.224, 43.818

50, 82.219, 44.111

48, 87.570, 43.948

Harmonies

Complementary

The Complementary color scheme is a pair of colors which are on the opposite of each other on the color wheel.



81, 8.540, 41.670



83, 7.906, 222.690

Rectangle

The Rectangle color scheme consists of four colors that form a rectangle on the color wheel.



81, 8.540, 41.670



81, 8.540, 91.670



81, 8.540, 221.670



81, 8.540, 271.670

Sweetspot

The Sweet Spot groups the original color and five complimentary colors.



81, 8.539, 41.687



98, 3.027, 41.765



80, 14.969, 331.882



52, 2.158, 41.777



0, 0.000, 0.000



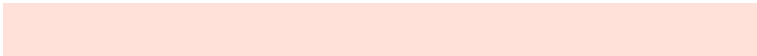
53, 0.007, 296.813

Same Dimension

The Same Dimension uses a secret algorithm to generate beautiful new colors.



81, 8.539, 41.687



92, 11.877, 41.640



84, 10.538, 93.395



44, 3.886, 41.737



38, 73.477, 44.357



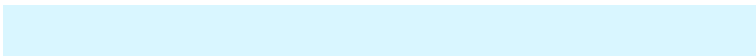
7, 20.655, 32.775

Inverse Universe

The Inverse Universe completely reimagines the original color for something new.



83, 7.906, 222.690



95, 10.795, 222.825



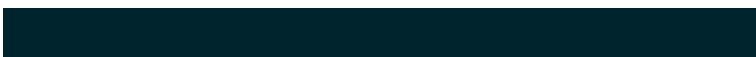
80, 10.591, 276.550



45, 3.669, 222.567



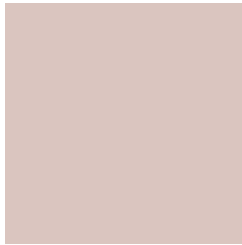
52, 33.351, 240.192



12, 13.131, 231.906

Previews

White Background



This preview shows how the CIELCh color 81, 8.540, 41.670 looks on a white background.

Color Contrast Check

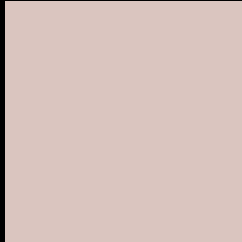
Large Text (above 18pt) WCAG AA × Fail

Any Text WCAG AA × Fail

Large Text (above 18pt) WCAG AAA × Fail

Any Text WCAG AAA × Fail

Black Background



This preview shows how the CIELCh color 81, 8.540, 41.670 looks on a black background.

Color Contrast Check

Large Text (above 18pt) WCAG AA ✓ Pass

Any Text WCAG AA ✓ Pass

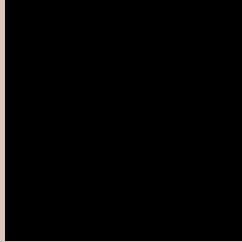
Large Text (above 18pt) WCAG AAA ✓ Pass

Any Text WCAG AAA ✓ Pass

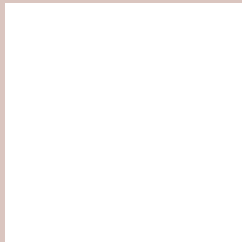
If you want to check with other color combinations, try the [Color Contrast Checker](#).

CIELCh 81, 8.540, 41.670

Background



This preview shows how black text looks on a background with the CIELCh color 81, 8.540, 41.670.



This preview shows how white text looks on a background with the CIELCh color 81, 8.540, 41.670.

Color Blindness Simulation

Color vision deficiency is a very complex topic, and I could not describe the different causes any better than Wikipedia does, so if you want to learn more, you should check out their [article about color blindness](#).

Dichromacy



Original Color

81, 8.540, 41.670

Protanopia

81, 4.514, 74.518

Deuteranopia

81, 11.491, 28.143



Tritanopia
81, 12.433, 340.621

Trichromacy



Original Color
81, 8.540, 41.670

Protanomaly
81, 5.812, 59.134

Deuteranomaly
81, 10.445, 31.775

Tritanomaly
81, 9.641, 357.544

Monochromacy



Original Color
81, 8.540, 41.670

Achromatopsia
81, 0.010, 296.813

Achromatomaly
81, 3.129, 39.201

CSS Examples

Text

The CSS property to change the color of the text to CIELCh 81, 8.540, 41.670 is called "color". The color property can be set on classes, ids or directly on the HTML element.

This example shows how text in the color `rgb(218, 197, 191)` looks like.

```
.text, #text, p{  
    color:rgb(218, 197, 191)  
}
```

If you want to add a text shadow in that color use the text-shadow property, you can generate a text shadow directly with our [CSS Text Shadow Generator](#).

Here you see how black text with a 4 pixel rgb(218, 197, 191) colored shadow looks like.

```
.shadow{ text-shadow: 4px 4px 2px rgb(218, 197, 191) }
```

Border

The CSS property to change the border of an element to CIELCh 81, 8.540, 41.670 is called "border". The border property can be set on classes, ids or directly on the HTML element.

This example shows the color as border, it can be applied via the CSS property "border" or "border-color".

```
.border, #border, table{ border:4px solid rgb(218, 197, 191) }
```

If only the border color should be changed use the property `border-color`.

```
.border{ border-color:rgb(218, 197, 191) }
```

If you want to add a box shadow in that color use:

Here you see how a box with a 4 pixel `rgb(218, 197, 191)` colored shadow looks like.

```
.boxshadow{ -moz-box-shadow:4px 4px 4px  
4px rgb(218, 197, 191); -webkit-box-  
shadow:4px 4px 4px 4px rgb(218, 197, 191);  
box-shadow:4px 4px 4px 4px rgb(218, 197,  
191) }
```

Background

The CSS property to change the background color of an element to CIELCh 81, 8.540, 41.670 is called "background". The background property can be set on classes, ids or directly on the HTML element.

```
.background, #background, body{  
background: rgb(218, 197, 191) }
```

If only the background color should be changed can be used:

```
.background{ background-color: rgb(218,  
197, 191) }
```

This example shows the color as background, it is applied via the CSS property "background".

To optimize and compress your CSS code, you can use our [online CSS compressor and optimizer](#) based on csstidy. If you want to create a linear or radial gradient as background or border, check our [CSS Gradient Generator](#).

Hey! You found this booklet interesting? Support Converting Colors with the new Membership Option!

The pro membership hides all ads, plus gives you double the colors in the color bucket, and more awesome pro features!

[Learn more, Memberships starting at \\$2.50/m!](#)

**Follow me
on Twitter!**

@ConvertingColor