

Converting Colors

CIELCh(81, 9.699, 347.016)

Have a look what the booklet for
CIELCh(81, 9.699, 347.016) contains.

CIELCh(81, 9.699, 347.016)	3
<i>Conversions</i>	4
<i>Details</i>	6
<i>Harmonies</i>	12
<i>Previews</i>	21
<i>Color Blindness Simulation</i>	24
<i>CSS Examples</i>	27

Color

CIELCh(81, 9.699, 347.016)

Conversions

Conversions Part 1

Format	Color
Hex	D9C3CD
RGB	217, 195, 205
RGB Percent	85%, 76%, 80%
CMY	0.1473, 0.2336, 0.1944
CMYK	0.00, 0.10, 0.06, 0.15
HSL	333°, 23%, 81%
HSV	333°, 10%, 85%
XYZ	59.4296, 58.4711, 66.1863
YIQ	202.7180, 9.9020, 7.7740

Conversions

Conversions Part 2

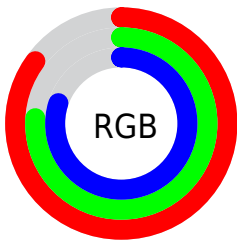
Format	Color
RYB	217, 195, 205
Decimal	14271437
CIELab	81.00, 9.45, -2.18
CIElCh	81, 9.699, 347.016
Yxy	58.4711, 0.3228, 0.3176
Android (android.graphics.Color)	4292461517 (0xFFD9C3CD)
YUV	202.7180, 1.1250, 12.5253
Hunter-Lab	76.4664, 4.9138, 2.2074

Details

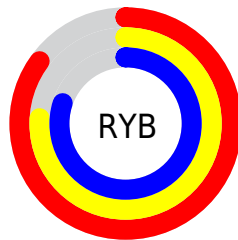
The CIELCh color $81, 9.699, 347.016$ is a light color, and the websafe version is hex `CCCCCC`. A complement of this color would be $85, 9.540, 165.350$, and the grayscale version is $82, 0.010, 296.813$.

A 20% lighter version of the original color is $99, 1.871, 324.342$, and $61, 9.945, 346.023$ is the 20% darker color. If you saturate the color by 10%, you get $75, 19.512, 348.022$, and if you desaturate by 10%, it is $87, 0.120, 342.456$.

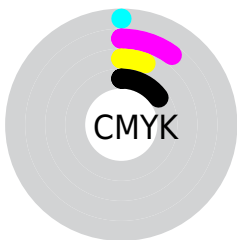
Distribution



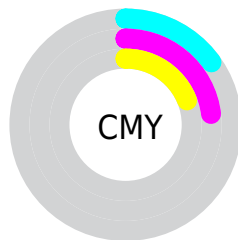
- Red (85%)
- Green (76%)
- Blue (80%)



- Red (85%)
- Yellow (76%)
- Blue (80%)



- Cyan (0%)
- Magenta (10%)
- Yellow (6%)
- Black (15%)



- Cyan (15%)
- Magenta (23%)
- Yellow (19%)

Brightness & Saturation Gradients

These gradients show how the CIELCh color 81, 9.699, 347.016 changes by changing the brightness by 10 percent. The first figure shows a shift by +10% for each color and the second figure -10%.

Similar to the brightness gradients but the following saturation gradients show a change of the CIELCh color 81, 9.699, 347.016 by changing the saturation by 10% instead.

81, 9.699, 347.016

81, 9.699, 347.016

100, 9.699,
347.016

71, 9.699, 347.016

61, 9.699, 347.016

51, 9.699, 347.016

41, 9.699, 347.016

31, 9.699, 347.016

21, 9.699, 347.016

11, 9.699, 347.016

1, 9.699, 347.016

0, 9.699, 347.016

81, 9.699, 347.016

81, 9.699, 347.016

75, 19.512,
348.022

87, 0.120, 342.456

93, 9.150, 165.453

70, 29.437,
349.139

97, 14.899,
169.821

65, 39.261,
350.425

97, 12.748,
193.770

60, 48.663,
351.942

97, 12.629,
198.662

56, 57.213,
353.777

52, 64.408,
356.053

49, 69.788,
358.927

48, 73.126, 2.573

Harmonies

Complementary

The Complementary color scheme is a pair of colors which are on the opposite of each other on the color wheel.



81, 9.699, 347.016



85, 9.540, 165.350

Rectangle

The Rectangle color scheme consists of four colors that form a rectangle on the color wheel.



81, 9.699, 347.016



81, 9.699, 37.016



81, 9.699, 167.016



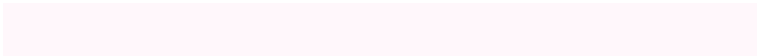
81, 9.699, 217.016

Sweetspot

The Sweet Spot groups the original color and five complimentary colors.



81, 9.697, 347.021



98, 3.242, 346.282



80, 12.500, 310.655



52, 2.459, 346.384



0, 0.000, 0.000



53, 0.007, 296.813

Same Dimension

The Same Dimension uses a secret algorithm to generate beautiful new colors.



81, 9.697, 347.021



92, 13.119, 347.214



81, 7.970, 22.740



43, 5.472, 346.955



37, 63.227, 6.136



6, 24.661, 357.669

Inverse Universe

The Inverse Universe completely reimagines the original color for something new.



81, 9.697, 347.021



92, 13.119, 347.214



85, 7.469, 201.922



43, 5.472, 346.955



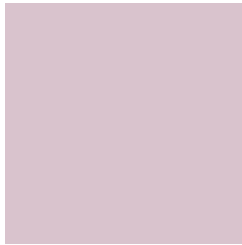
37, 63.227, 6.136



6, 24.661, 357.669

Previews

White Background



This preview shows how the CIELCh color 81, 9.699, 347.016 looks on a white background.

Color Contrast Check

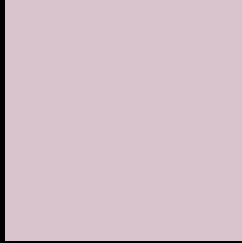
Large Text (above 18pt) WCAG AA × Fail

Any Text WCAG AA × Fail

Large Text (above 18pt) WCAG AAA × Fail

Any Text WCAG AAA × Fail

Black Background



This preview shows how the CIELCh color 81, 9.699, 347.016 looks on a black background.

Color Contrast Check

Large Text (above 18pt) WCAG AA ✓ Pass

Any Text WCAG AA ✓ Pass

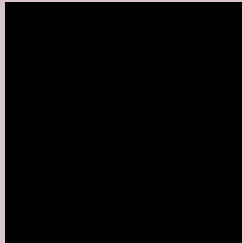
Large Text (above 18pt) WCAG AAA ✓ Pass

Any Text WCAG AAA ✓ Pass

If you want to check with other color combinations, try the [Color Contrast Checker](#).

CIELCh 81, 9.699, 347.016

Background



This preview shows how black text looks on a background with the CIELCh color 81, 9.699, 347.016.



This preview shows how white text looks on a background with the CIELCh color 81, 9.699, 347.016.

Color Blindness Simulation

Color vision deficiency is a very complex topic, and I could not describe the different causes any better than Wikipedia does, so if you want to learn more, you should check out their [article about color blindness](#).

Dichromacy



Original Color


81, 9.699, 347.016

Protanopia

81, 4.408, 304.765

Deuteranopia

81, 10.600, 346.877



Tritanopia
81, 11.602, 337.013

Trichromacy



Original Color
81, 9.699, 347.016

Protanomaly
81, 6.044, 327.500

Deuteranomaly
81, 10.293, 345.702

Tritanomaly
81, 10.915, 341.092

Monochromacy



Original Color
81, 9.699, 347.016

Achromatopsia
82, 0.010, 296.813

Achromatomaly
81, 3.636, 343.849

CSS Examples

Text

The CSS property to change the color of the text to CIELCh 81, 9.699, 347.016 is called "color". The color property can be set on classes, ids or directly on the HTML element.

This example shows how text in the color `rgb(217, 195, 205)` looks like.

```
.text, #text, p{  
    color:rgb(217, 195, 205)  
}
```

If you want to add a text shadow in that color use the text-shadow property, you can generate a text shadow directly with our [CSS Text Shadow Generator](#).

Here you see how black text with a 4 pixel rgb(217, 195, 205) colored shadow looks like.

```
.shadow{ text-shadow: 4px 4px 2px rgb(217, 195, 205) }
```

Border

The CSS property to change the border of an element to CIELCh 81, 9.699, 347.016 is called "border". The border property can be set on classes, ids or directly on the HTML element.

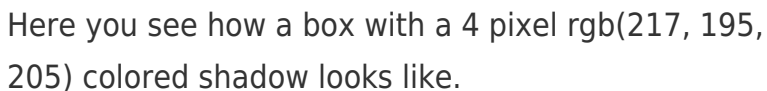
This example shows the color as border, it can be applied via the CSS property "border" or "border-color".

```
.border, #border, table{ border:4px solid rgb(217, 195, 205) }
```

If only the border color should be changed use the property `border-color`.

```
.border{ border-color:rgb(217, 195, 205) }
```

If you want to add a box shadow in that color use:



Here you see how a box with a 4 pixel `rgb(217, 195, 205)` colored shadow looks like.

```
.boxshadow{ -moz-box-shadow:4px 4px 4px  
4px rgb(217, 195, 205); -webkit-box-  
shadow:4px 4px 4px 4px rgb(217, 195, 205);  
box-shadow:4px 4px 4px 4px rgb(217, 195,  
205) }
```

Background

The CSS property to change the background color of an element to CIELCh 81, 9.699, 347.016 is called "background". The background property can be set on classes, ids or directly on the HTML element.

```
.background, #background, body{  
background: rgb(217, 195, 205) }
```

If only the background color should be changed can be used:

```
.background{ background-color: rgb(217,  
195, 205) }
```

This example shows the color as background, it is applied via the CSS property "background".

To optimize and compress your CSS code, you can use our [online CSS compressor and optimizer](#) based on csstidy. If you want to create a linear or radial gradient as background or border, check our [CSS Gradient Generator](#).

Hey! You found this booklet interesting? Support Converting Colors with the new Membership Option!

The pro membership hides all ads, plus gives you double the colors in the color bucket, and more awesome pro features!

[Learn more, Memberships starting at \\$2.50/m!](#)

**Follow me
on Twitter!**

@ConvertingColor