

Converting Colors

CIELCh(82, 10.182, 17.973)

Have a look what the booklet for
CIELCh(82, 10.182, 17.973) contains.

CIELCh(82, 10.116, 20.138)	3
<i>Conversions</i>	4
<i>Details</i>	6
<i>Harmonies</i>	11
<i>Previews</i>	20
<i>Color Blindness Simulation</i>	23
<i>CSS Examples</i>	26

Color

CIELCh(82, 10.116, 20.138)

Conversions

Conversions Part 1

Format	Color
Hex	E1C6C6
RGB	225, 198, 198
RGB Percent	88%, 78%, 78%
CMY	0.1187, 0.2245, 0.2245
CMYK	0.00, 0.12, 0.12, 0.12
HSL	0°, 31%, 83%
HSV	0°, 12%, 88%
XYZ	61.2650, 60.2982, 61.6777
YIQ	206.0730, 16.0920, 5.7240

Conversions

Conversions Part 2

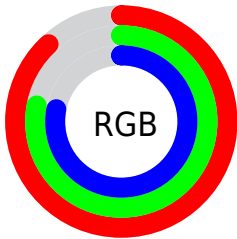
Format	Color
R_{YB}	225, 198, 198
Decimal	14796486
CIE _{Lab}	82.00, 9.50, 3.48
CIE _{LCh}	82, 10.116, 20.138
Yxy	60.2982, 0.3343, 0.3291
Android (android.graphics.Color)	4292986566 (0xFFE1C6C6)
YUV	206.0730, -3.9800, 16.5990
Hunter-Lab	77.6519, 4.9402, 7.2632

Details

The CIELCh color **82, 10.116, 20.138** is a light color, and the websafe version is hex **CCCCCC**. A complement of this color would be **88, 9.368, 198.831**, and the grayscale version is **83, 0.010, 296.813**.

A 20% lighter version of the original color is **100, 0.012, 296.813**, and **62, 10.387, 20.388** is the 20% darker color. If you saturate the color by 10%, you get **76, 19.279, 21.045**, and if you desaturate by 10%, it is **88, 1.629, 19.169**.

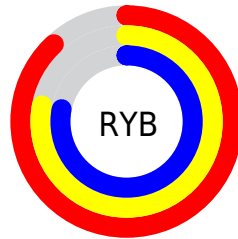
Distribution



Red (88%)

Green (78%)

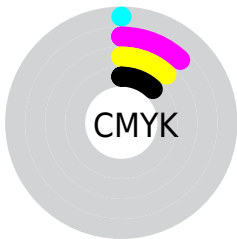
Blue (78%)



Red (88%)

Yellow (78%)

Blue (78%)

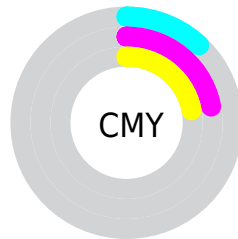


Cyan (0%)

Magenta (12%)

Yellow (12%)

Black (12%)



Cyan (12%)

Magenta (22%)

Yellow (22%)


Brightness & Saturation Gradients


These gradients show how the CIELCh color 82, 10.116, 20.138 changes by changing the brightness by 10 percent. The first figure shows a shift by +10% for each color and the second figure -10%.


Similar to the brightness gradients but the following saturation gradients show a change of the CIELCh color 82, 10.116, 20.138 by changing the saturation by 10% instead.

 82, 10.116, 20.138

 82, 10.116, 20.138

 100, 10.116,
20.138

 72, 10.116, 20.138

 62, 10.116, 20.138

 52, 10.116, 20.138

 42, 10.116, 20.138

 32, 10.116, 20.138

 22, 10.116, 20.138

 12, 10.116, 20.138

 2, 10.116, 20.138

 0, 10.116, 20.138

82, 10.116, 20.138

82, 10.116, 20.138

76, 19.279, 21.045

88, 1.629, 19.169

70, 29.119, 22.186

94, 6.214, 199.111

65, 39.566, 23.673

98, 10.260,
198.822

60, 50.460, 25.616

55, 61.532, 28.122

52, 72.401, 31.240

49, 82.500, 34.800

48, 90.685, 38.117

47, 95.050, 40.001

Harmonies

Complementary

The Complementary color scheme is a pair of colors which are on the opposite of each other on the color wheel.



82, 10.116, 20.138



88, 9.368, 198.831

Rectangle

The Rectangle color scheme consists of four colors that form a rectangle on the color wheel.



82, 10.116, 20.138



82, 10.116, 70.138



82, 10.116, 200.138



82, 10.116, 250.138

Sweetspot

The Sweet Spot groups the original color and five complimentary colors.



82, 10.114, 20.150



97, 3.616, 19.477



83, 17.292, 325.085



51, 2.578, 19.554



0, 0.000, 0.000



53, 0.007, 296.813

Same Dimension

The Same Dimension uses a secret algorithm to generate beautiful new colors.



82, 10.114, 20.150



90, 13.170, 20.322



85, 8.679, 73.905



44, 4.727, 19.944



36, 79.111, 39.954



6, 25.538, 20.945

Inverse Universe

The Inverse Universe completely reimagines the original color for something new.



88, 9.368, 198.831



98, 12.028, 198.714



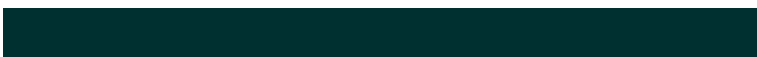
84, 8.427, 257.068



46, 4.453, 198.982



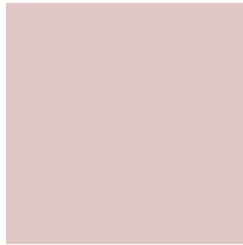
65, 37.932, 196.407



17, 15.582, 196.404

Previews

White Background



This preview shows how the CIELCh color 82, 10.116, 20.138 looks on a white background.

Color Contrast Check

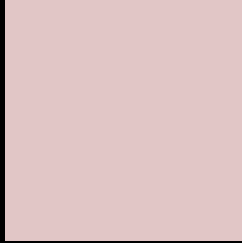
Large Text (above 18pt) WCAG AA × Fail

Any Text WCAG AA × Fail

Large Text (above 18pt) WCAG AAA × Fail

Any Text WCAG AAA × Fail

Black Background



This preview shows how the CIE LCh color 82, 10.116, 20.138 looks on a black background.

Color Contrast Check

Large Text (above 18pt) WCAG AA ✓ Pass

Any Text WCAG AA ✓ Pass

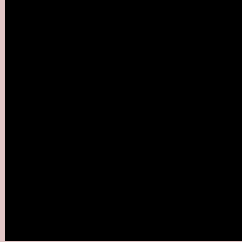
Large Text (above 18pt) WCAG AAA ✓ Pass

Any Text WCAG AAA ✓ Pass

If you want to check with other color combinations, try the [Color Contrast Checker](#).

CIELCh 82, 10.116, 20.138

Background



This preview shows how black text looks on a background with the CIELCh color 82, 10.116, 20.138.



This preview shows how white text looks on a background with the CIELCh color 82, 10.116, 20.138.

Color Blindness Simulation

Color vision deficiency is a very complex topic, and I could not describe the different causes any better than Wikipedia does, so if you want to learn more, you should check out their [article about color blindness](#).

Dichromacy



Original Color

82, 10.116, 20.138

Protanopia

82, 2.107, 49.340

Deuteranopia

82, 10.884, 17.442



Tritanopia
82, 13.571, 344.753

Trichromacy



Original Color
82, 10.116, 20.138

Protanomaly
82, 4.836, 25.916

Deuteranomaly
82, 10.884, 17.442

Tritanomaly
82, 11.731, 356.454

Monochromacy



Original Color
82, 10.116, 20.138

Achromatopsia
83, 0.010, 296.813

Achromatomaly
82, 3.678, 19.533

CSS Examples

Text

The CSS property to change the color of the text to CIELCh 82, 10.116, 20.138 is called "color". The color property can be set on classes, ids or directly on the HTML element.

This example shows how text in the color `rgb(225, 198, 198)` looks like.

```
.text, #text, p{  
    color:rgb(225, 198, 198)  
}
```

If you want to add a text shadow in that color use the text-shadow property, you can generate a text shadow directly with our [CSS Text Shadow Generator](#).

Here you see how black text with a 4 pixel rgb(225, 198, 198) colored shadow looks like.

```
.shadow{ text-shadow: 4px 4px 2px rgb(225, 198, 198) }
```

Border

The CSS property to change the border of an element to CIELCh 82, 10.116, 20.138 is called "border". The border property can be set on classes, ids or directly on the HTML element.

This example shows the color as border, it can be applied via the CSS property "border" or "border-color".

```
.border, #border, table{ border:4px solid rgb(225, 198, 198) }
```

If only the border color should be changed use the property `border-color`.

```
.border{ border-color:rgb(225, 198, 198) }
```

If you want to add a box shadow in that color use:

Here you see how a box with a 4 pixel `rgb(225, 198, 198)` colored shadow looks like.

```
.boxshadow{ -moz-box-shadow:4px 4px 4px  
4px rgb(225, 198, 198); -webkit-box-  
shadow:4px 4px 4px 4px rgb(225, 198, 198);  
box-shadow:4px 4px 4px 4px rgb(225, 198,  
198) }
```

Background

The CSS property to change the background color of an element to CIELCh 82, 10.116, 20.138 is called "background". The background property can be set on classes, ids or directly on the HTML element.

```
.background, #background, body{  
background: rgb(225, 198, 198) }
```

If only the background color should be changed can be used:

```
.background{ background-color: rgb(225,  
198, 198) }
```

This example shows the color as background, it is applied via the CSS property "background".

To optimize and compress your CSS code, you can use our [online CSS compressor and optimizer](#) based on csstidy. If you want to create a linear or radial gradient as background or border, check our [CSS Gradient Generator](#).

Hey! You found this booklet interesting? Support Converting Colors with the new Membership Option!

The pro membership hides all ads, plus gives you double the colors in the color bucket, and more awesome pro features!

[Learn more, Memberships starting at \\$2.50/m!](#)

**Follow me
on Twitter!**

@ConvertingColor