

Converting Colors

CIELCh(82, 10.976, 23.975)

Have a look what the booklet for
CIELCh(82, 10.976, 23.975) contains.

CIELCh(82, 10.926, 22.959)	3
<i>Conversions</i>	4
<i>Details</i>	6
<i>Harmonies</i>	11
<i>Previews</i>	20
<i>Color Blindness Simulation</i>	23
<i>CSS Examples</i>	26

Color

CIELCh(82, 10.926, 22.959)

Conversions

Conversions Part 1

Format	Color
Hex	E2C5C4
RGB	226, 197, 196
RGB Percent	89%, 77%, 77%
CMY	0.1124, 0.2262, 0.2301
CMYK	0.00, 0.13, 0.13, 0.11
HSL	2°, 34%, 83%
HSV	2°, 13%, 89%
XYZ	61.5048, 60.2982, 60.8106
YIQ	205.5570, 17.6050, 5.8370

Conversions

Conversions Part 2

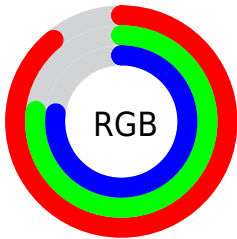
Format	Color
R _Y B	226, 197, 196
Decimal	14861764
CIE Lab	82.00, 10.06, 4.26
CIE LCh	82, 10.926, 22.959
Yxy	60.2982, 0.3368, 0.3302
Android (android.graphics.Color)	4293051844 (0xFFE2C5C4)
YUV	205.5570, -4.7116, 17.9285
Hunter-Lab	77.6519, 5.4916, 7.9253

Details

The CIELCh color **82, 10.926, 22.959** is a light color, and the websafe version is hex **FFCCCC**. A complement of this color would be **88, 10.021, 201.791**, and the grayscale version is **83, 0.010, 296.813**.

A 20% lighter version of the original color is **100, 0.604, 74.594**, and **62, 10.855, 23.367** is the 20% darker color. If you saturate the color by 10%, you get **76, 19.950, 23.758**, and if you desaturate by 10%, it is **88, 2.580, 22.216**.

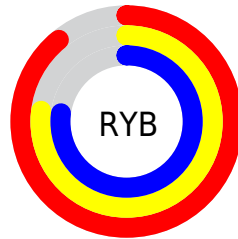
Distribution



Red (89%)

Green (77%)

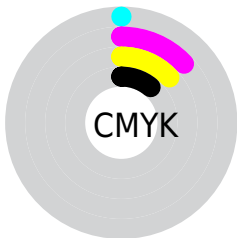
Blue (77%)



Red (89%)

Yellow (77%)

Blue (77%)

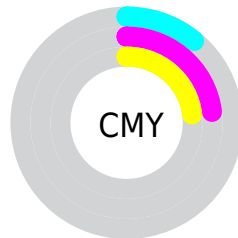


Cyan (0%)

Magenta (13%)

Yellow (13%)

Black (11%)



Cyan (11%)

Magenta (23%)

Yellow (23%)


Brightness & Saturation Gradients

These gradients show how the CIELCh color 82, 10.926, 22.959 changes by changing the brightness by 10 percent. The first figure shows a shift by +10% for each color and the second figure -10%.

Similar to the brightness gradients but the following saturation gradients show a change of the CIELCh color 82, 10.926, 22.959 by changing the saturation by 10% instead.

 82, 10.926, 22.959

 82, 10.926, 22.959

 100, 10.926,
22.959

 72, 10.926, 22.959

 62, 10.926, 22.959

 52, 10.926, 22.959

 42, 10.926, 22.959

 32, 10.926, 22.959

 22, 10.926, 22.959

 12, 10.926, 22.959

 2, 10.926, 22.959

 0, 10.926, 22.959

82, 10.926, 22.959

82, 10.926, 22.959

76, 19.950, 23.758

88, 2.580, 22.216

70, 29.661, 24.782

94, 5.124, 202.137

65, 40.007, 26.131

98, 9.735, 198.859

60, 50.851, 27.902

56, 61.953, 30.182

52, 72.942, 32.991

50, 83.201, 36.127

48, 91.411, 38.885

47, 95.135, 40.273

Harmonies

Complementary

The Complementary color scheme is a pair of colors which are on the opposite of each other on the color wheel.



82, 10.926, 22.959



88, 10.021, 201.791

Rectangle

The Rectangle color scheme consists of four colors that form a rectangle on the color wheel.



82, 10.926, 22.959



82, 10.926, 72.959



82, 10.926, 202.959



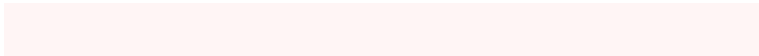
82, 10.926, 252.959

Sweetspot

The Sweet Spot groups the original color and five complimentary colors.



82, 10.924, 22.970



97, 3.498, 22.300



83, 18.782, 326.067



51, 2.493, 22.369



0, 0.000, 0.000



53, 0.007, 296.813

Same Dimension

The Same Dimension uses a secret algorithm to generate beautiful new colors.



82, 10.924, 22.970



89, 14.689, 23.176



86, 9.883, 77.237



44, 4.575, 22.708



37, 78.651, 40.341



6, 24.955, 22.604

Inverse Universe

The Inverse Universe completely reimagines the original color for something new.



88, 10.021, 201.791



97, 13.209, 201.672



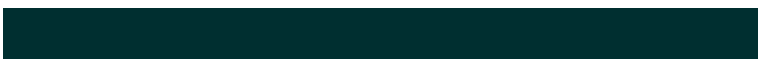
84, 9.628, 260.802



46, 4.306, 201.967



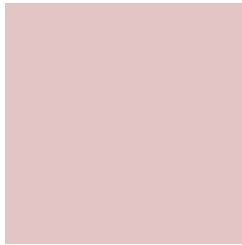
63, 36.239, 201.782



17, 14.992, 200.866

Previews

White Background



This preview shows how the CIELCh color 82, 10.926, 22.959 looks on a white background.

Color Contrast Check

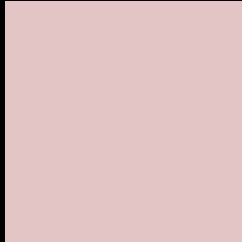
Large Text (above 18pt) WCAG AA × Fail

Any Text WCAG AA × Fail

Large Text (above 18pt) WCAG AAA × Fail

Any Text WCAG AAA × Fail

Black Background



This preview shows how the CIELCh color 82, 10.926, 22.959 looks on a black background.

Color Contrast Check

Large Text (above 18pt) WCAG AA ✓ Pass

Any Text WCAG AA ✓ Pass

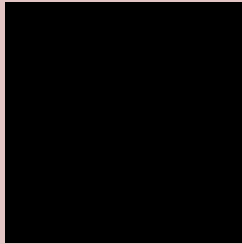
Large Text (above 18pt) WCAG AAA ✓ Pass

Any Text WCAG AAA ✓ Pass

If you want to check with other color combinations, try the [Color Contrast Checker](#).

CIELCh 82, 10.926, 22.959

Background



This preview shows how black text looks on a background with the CIELCh color 82, 10.926, 22.959.



This preview shows how white text looks on a background with the CIELCh color 82, 10.926, 22.959.

Color Blindness Simulation

Color vision deficiency is a very complex topic, and I could not describe the different causes any better than Wikipedia does, so if you want to learn more, you should check out their [article about color blindness](#).

Dichromacy



Original Color

82, 10.926, 22.959

Protanopia

82, 2.704, 55.171

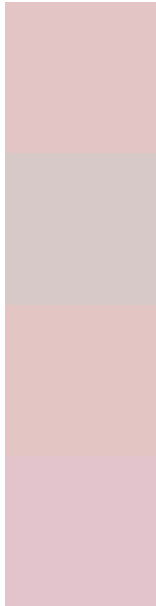
Deuteranopia

82, 11.310, 22.896



Tritanopia
82, 14.495, 347.444

Trichromacy



Original Color
82, 10.926, 22.959

Protanomaly
82, 5.295, 31.175

Deuteranomaly
82, 11.310, 22.896

Tritanomaly
82, 12.431, 357.938

Monochromacy



Original Color
82, 10.926, 22.959

Achromatopsia
83, 0.010, 296.813

Achromatomaly
82, 3.717, 27.685

CSS Examples

Text

The CSS property to change the color of the text to CIELCh 82, 10.926, 22.959 is called "color". The color property can be set on classes, ids or directly on the HTML element.

This example shows how text in the color `rgb(226, 197, 196)` looks like.

```
.text, #text, p{  
    color:rgb(226, 197, 196)  
}
```

If you want to add a text shadow in that color use the text-shadow property, you can generate a text shadow directly with our [CSS Text Shadow Generator](#).

Here you see how black text with a 4 pixel rgb(226, 197, 196) colored shadow looks like.

```
.shadow{ text-shadow: 4px 4px 2px rgb(226, 197, 196) }
```

Border

The CSS property to change the border of an element to CIELCh 82, 10.926, 22.959 is called "border". The border property can be set on classes, ids or directly on the HTML element.

This example shows the color as border, it can be applied via the CSS property "border" or "border-color".

```
.border, #border, table{ border:4px solid rgb(226, 197, 196) }
```

If only the border color should be changed use the property border-color.

```
.border{ border-color:rgb(226, 197, 196) }
```

If you want to add a box shadow in that color use:

Here you see how a box with a 4 pixel rgb(226, 197, 196) colored shadow looks like.

```
.boxshadow{ -moz-box-shadow:4px 4px 4px  
4px rgb(226, 197, 196); -webkit-box-  
shadow:4px 4px 4px 4px rgb(226, 197, 196);  
box-shadow:4px 4px 4px 4px rgb(226, 197,  
196) }
```

Background

The CSS property to change the background color of an element to CIELCh 82, 10.926, 22.959 is called "background". The background property can be set on classes, ids or directly on the HTML element.

```
.background, #background, body{  
background: rgb(226, 197, 196) }
```

If only the background color should be changed can be used:

```
.background{ background-color: rgb(226,  
197, 196) }
```

This example shows the color as background, it is applied via the CSS property "background".

To optimize and compress your CSS code, you can use our [online CSS compressor and optimizer](#) based on csstidy. If you want to create a linear or radial gradient as background or border, check our [CSS Gradient Generator](#).

Hey! You found this booklet interesting? Support Converting Colors with the new Membership Option!

The pro membership hides all ads, plus gives you double the colors in the color bucket, and more awesome pro features!

[Learn more, Memberships starting at \\$2.50/m!](#)

**Follow me
on Twitter!**

@ConvertingColor