

Converting Colors

CIELCh(82, 11.495, 53.307)

Have a look what the booklet for
CIELCh(82, 11.495, 53.307) contains.

CIELCh(82, 11.482, 53.312)	3
<i>Conversions</i>	4
<i>Details</i>	6
<i>Harmonies</i>	11
<i>Previews</i>	20
<i>Color Blindness Simulation</i>	23
<i>CSS Examples</i>	26

Color

CIELCh(82, 11.482, 53.312)

Conversions

Conversions Part 1

Format	Color
Hex	E0C7BB
RGB	224, 199, 187
RGB Percent	88%, 78%, 73%
CMY	0.1215, 0.2195, 0.2666
CMYK	0.00, 0.11, 0.17, 0.12
HSL	19°, 37%, 81%
HSV	19°, 17%, 88%
XYZ	60.1494, 60.2982, 55.4956
YIQ	205.1070, 18.7520, 1.5680

Conversions

Conversions Part 2

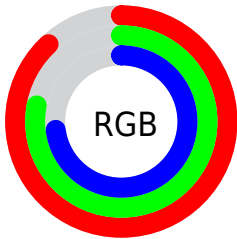
Format	Color
R _Y B	224, 205, 187
Decimal	14731195
CIE Lab	82.00, 6.86, 9.21
CIE LCh	82, 11.482, 53.312
Yxy	60.2982, 0.3419, 0.3427
Android (android.graphics.Color)	4292921275 (0xFFE0C7BB)
YUV	205.1070, -8.9268, 16.5692
Hunter-Lab	77.6519, 2.3759, 11.9835

Details

The CIELCh color **82, 11.482, 53.312** is a light color, and the websafe version is hex **CCCCCC**. A complement of this color would be **83, 10.510, 236.181**, and the grayscale version is **82, 0.010, 296.813**.

A 20% lighter version of the original color is **100, 6.073, 109.711**, and **62, 11.272, 52.998** is the 20% darker color. If you saturate the color by 10%, you get **78, 19.135, 52.674**, and if you desaturate by 10%, it is **86, 4.366, 53.977**.

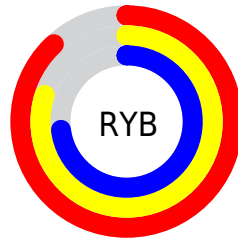
Distribution



Red (88%)

Green (78%)

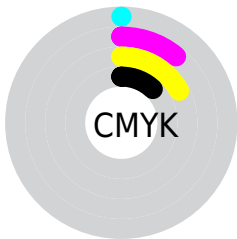
Blue (73%)



Red (88%)

Yellow (80%)

Blue (73%)

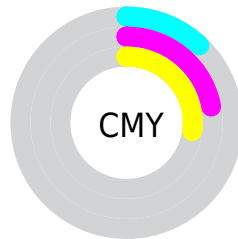


Cyan (0%)

Magenta (11%)

Yellow (17%)

Black (12%)



Cyan (12%)

Magenta (22%)

Yellow (27%)


Brightness & Saturation Gradients

These gradients show how the CIELCh color 82, 11.482, 53.312 changes by changing the brightness by 10 percent. The first figure shows a shift by +10% for each color and the second figure -10%.

Similar to the brightness gradients but the following saturation gradients show a change of the CIELCh color 82, 11.482, 53.312 by changing the saturation by 10% instead.

 82, 11.482, 53.312

 82, 11.482, 53.312

 100, 11.482,
53.312

 72, 11.482, 53.312

 62, 11.482, 53.312

 52, 11.482, 53.312

 42, 11.482, 53.312

 32, 11.482, 53.312

 22, 11.482, 53.312

 12, 11.482, 53.312

 2, 11.482, 53.312

 0, 11.482, 53.312

82, 11.482, 53.312

82, 11.482, 53.312

78, 19.135, 52.674

86, 4.366, 53.977

74, 27.370, 52.088

91, 2.262, 235.102

70, 36.209, 51.592

95, 8.458, 235.716

66, 45.627, 51.196

98, 10.491,
198.806

62, 55.509, 50.880

59, 65.549, 50.557

56, 75.040, 49.985

53, 82.660, 48.682

52, 84.999, 48.217

Harmonies

Complementary

The Complementary color scheme is a pair of colors which are on the opposite of each other on the color wheel.



82, 11.482, 53.312



83, 10.510, 236.181

Rectangle

The Rectangle color scheme consists of four colors that form a rectangle on the color wheel.



82, 11.482, 53.312



82, 11.482, 103.312



82, 11.482, 233.312



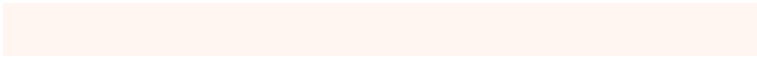
82, 11.482, 283.312

Sweetspot

The Sweet Spot groups the original color and five complimentary colors.



82, 11.482, 53.325



98, 3.701, 54.051



80, 19.062, 336.123



52, 2.532, 54.018



0, 0.000, 0.000



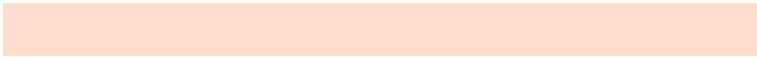
53, 0.007, 296.813

Same Dimension

The Same Dimension uses a secret algorithm to generate beautiful new colors.



82, 11.482, 53.325



90, 15.653, 53.084



87, 15.944, 99.507



45, 3.851, 53.798



41, 70.545, 48.780



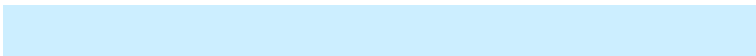
9, 20.704, 41.923

Inverse Universe

The Inverse Universe completely reimagines the original color for something new.



83, 10.510, 236.181



92, 14.021, 236.595



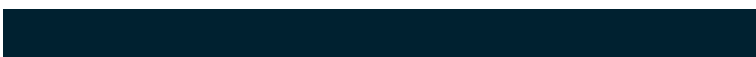
79, 16.272, 283.464



45, 3.671, 235.487



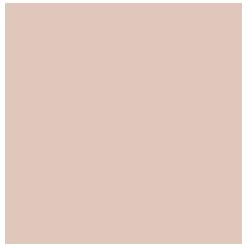
47, 38.535, 260.335



11, 14.591, 250.456

Previews

White Background



This preview shows how the CIELCh color 82, 11.482, 53.312 looks on a white background.

Color Contrast Check

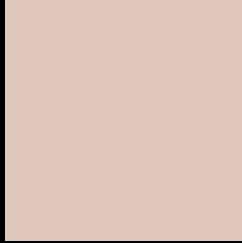
Large Text (above 18pt) WCAG AA × Fail

Any Text WCAG AA × Fail

Large Text (above 18pt) WCAG AAA × Fail

Any Text WCAG AAA × Fail

Black Background



This preview shows how the CIELCh color 82, 11.482, 53.312 looks on a black background.

Color Contrast Check

Large Text (above 18pt) WCAG AA ✓ Pass

Any Text WCAG AA ✓ Pass

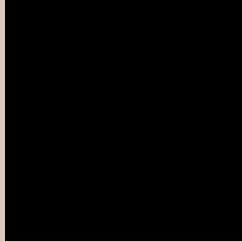
Large Text (above 18pt) WCAG AAA ✓ Pass

Any Text WCAG AAA ✓ Pass

If you want to check with other color combinations, try the [Color Contrast Checker](#).

CIELCh 82, 11.482, 53.312

Background



This preview shows how black text looks on a background with the CIELCh color 82, 11.482, 53.312.



This preview shows how white text looks on a background with the CIELCh color 82, 11.482, 53.312.

Color Blindness Simulation

Color vision deficiency is a very complex topic, and I could not describe the different causes any better than Wikipedia does, so if you want to learn more, you should check out their [article about color blindness](#).

Dichromacy



Original Color
82, 11.482, 53.312

Protanopia
82, 7.967, 87.283

Deuteranopia
82, 13.751, 42.703



Tritanopia
82, 14.476, 344.831

Trichromacy



Original Color
82, 11.482, 53.312

Protanomaly
82, 9.090, 73.794

Deuteranomaly
82, 12.908, 46.736

Tritanomaly
82, 11.606, 4.490

Monochromacy



Original Color
82, 11.482, 53.312

Achromatopsia
82, 0.010, 296.813

Achromatomaly
82, 4.237, 57.953

CSS Examples

Text

The CSS property to change the color of the text to CIELCh 82, 11.482, 53.312 is called "color". The color property can be set on classes, ids or directly on the HTML element.

This example shows how text in the color `rgb(224, 199, 187)` looks like.

```
.text, #text, p{  
    color:rgb(224, 199, 187)  
}
```

If you want to add a text shadow in that color use the text-shadow property, you can generate a text shadow directly with our [CSS Text Shadow Generator](#).

Here you see how black text with a 4 pixel rgb(224, 199, 187) colored shadow looks like.

```
.shadow{ text-shadow: 4px 4px 2px rgb(224, 199, 187) }
```

Border

The CSS property to change the border of an element to CIELCh 82, 11.482, 53.312 is called "border". The border property can be set on classes, ids or directly on the HTML element.

This example shows the color as border, it can be applied via the CSS property "border" or "border-color".

```
.border, #border, table{ border:4px solid rgb(224, 199, 187) }
```

If only the border color should be changed use the property border-color.

```
.border{ border-color:rgb(224, 199, 187) }
```

If you want to add a box shadow in that color use:

Here you see how a box with a 4 pixel rgb(224, 199, 187) colored shadow looks like.

```
.boxshadow{ -moz-box-shadow:4px 4px 4px  
4px rgb(224, 199, 187); -webkit-box-  
shadow:4px 4px 4px 4px rgb(224, 199, 187);  
box-shadow:4px 4px 4px 4px rgb(224, 199,  
187) }
```

Background

The CSS property to change the background color of an element to CIELCh 82, 11.482, 53.312 is called "background". The background property can be set on classes, ids or directly on the HTML element.

```
.background, #background, body{  
background: rgb(224, 199, 187) }
```

If only the background color should be changed can be used:

```
.background{ background-color: rgb(224,  
199, 187) }
```

This example shows the color as background, it is applied via the CSS property "background".

To optimize and compress your CSS code, you can use our [online CSS compressor and optimizer](#) based on csstidy. If you want to create a linear or radial gradient as background or border, check our [CSS Gradient Generator](#).

Hey! You found this booklet interesting? Support Converting Colors with the new Membership Option!

The pro membership hides all ads, plus gives you double the colors in the color bucket, and more awesome pro features!

[Learn more, Memberships starting at \\$2.50/m!](#)

**Follow me
on Twitter!**

@ConvertingColor