

Converting Colors

CIELCh(82, 11.587, 67.885)

Have a look what the booklet for
CIELCh(82, 11.587, 67.885) contains.

CIELCh(82, 11.686, 65.883)	3
<i>Conversions</i>	4
<i>Details</i>	6
<i>Harmonies</i>	11
<i>Previews</i>	20
<i>Color Blindness Simulation</i>	23
<i>CSS Examples</i>	26

Color

CIELCh(82, 11.686, 65.883)

Conversions

Conversions Part 1

Format	Color
Hex	DDC8B8
RGB	221, 200, 184
RGB Percent	87%, 78%, 72%
CMY	0.1324, 0.2147, 0.2775
CMYK	0.00, 0.09, 0.17, 0.13
HSL	26°, 35%, 80%
HSV	26°, 17%, 87%
XYZ	59.2772, 60.2982, 53.9895
YIQ	204.4550, 17.6520, -0.5240

Conversions

Conversions Part 2

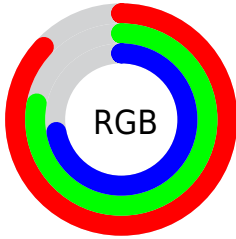
Format	Color
RYB	221, 212, 184
Decimal	14534840
CIELab	82.00, 4.77, 10.67
CIELCh	82, 11.686, 65.883
Yxy	60.2982, 0.3415, 0.3474
Android (android.graphics.Color)	4292724920 (0xFFDDC8B8)
YUV	204.4550, -10.0843, 14.5100
Hunter-Lab	77.6519, 0.3709, 13.1334

Details

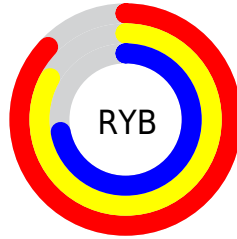
The CIELCh color $82, 11.686, 65.883$ is a light color, and the websafe version is hex `CCCCCC`. A complement of this color would be $81, 10.984, 249.965$, and the grayscale version is $82, 0.010, 296.813$.

A 20% lighter version of the original color is $100, 7.593, 109.599$, and $62, 11.781, 65.022$ is the 20% darker color. If you saturate the color by 10%, you get $78, 19.232, 64.813$, and if you desaturate by 10%, it is $86, 4.564, 66.941$.

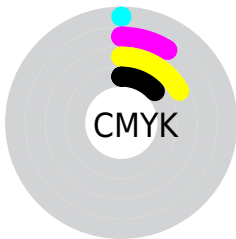
Distribution



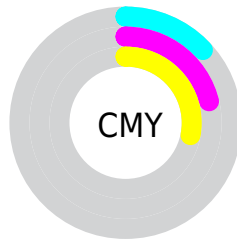
- Red (87%)
- Green (78%)
- Blue (72%)



- Red (87%)
- Yellow (83%)
- Blue (72%)



- Cyan (0%)
- Magenta (9%)
- Yellow (17%)
- Black (13%)



- Cyan (13%)
- Magenta (21%)
- Yellow (28%)

Brightness & Saturation Gradients

These gradients show how the CIELCh color 82, 11.686, 65.883 changes by changing the brightness by 10 percent. The first figure shows a shift by +10% for each color and the second figure -10%.

Similar to the brightness gradients but the following saturation gradients show a change of the CIELCh color 82, 11.686, 65.883 by changing the saturation by 10% instead.

■ 82, 11.686, 65.883

■ 82, 11.686, 65.883

■ 100, 11.686,
65.883

■ 72, 11.686, 65.883

■ 62, 11.686, 65.883

■ 52, 11.686, 65.883

■ 42, 11.686, 65.883

■ 32, 11.686, 65.883

■ 22, 11.686, 65.883

■ 12, 11.686, 65.883

■ 2, 11.686, 65.883

■ 0, 11.686, 65.883

82, 11.686, 65.883

82, 11.686, 65.883

78, 19.232, 64.813

86, 4.564, 66.941

75, 27.231, 63.738

89, 2.171, 248.349

71, 35.689, 62.683

93, 8.561, 249.279

68, 44.561, 61.643

97, 10.079,
212.243

65, 53.706, 60.585

98, 11.400,
198.745

62, 62.780, 59.411

59, 71.072, 57.898

57, 77.445, 55.659

56, 79.300, 54.907

Harmonies

Complementary

The Complementary color scheme is a pair of colors which are on the opposite of each other on the color wheel.



82, 11.686, 65.883



81, 10.984, 249.965

Rectangle

The Rectangle color scheme consists of four colors that form a rectangle on the color wheel.



82, 11.686, 65.883



82, 11.686, 115.883



82, 11.686, 245.883



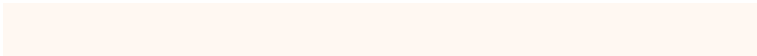
82, 11.686, 295.883

Sweetspot

The Sweet Spot groups the original color and five complimentary colors.



82, 11.686, 65.896



98, 3.787, 67.093



79, 17.831, 340.726



52, 2.589, 67.032



0, 0.000, 0.000



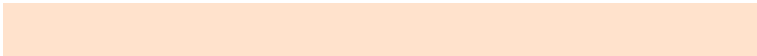
53, 0.007, 296.813

Same Dimension

The Same Dimension uses a secret algorithm to generate beautiful new colors.



82, 11.686, 65.896



92, 15.837, 65.525



87, 17.690, 104.859



44, 3.855, 66.671



44, 65.796, 55.571



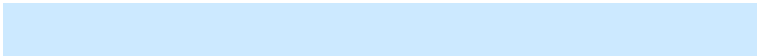
10, 18.510, 52.092

Inverse Universe

The Inverse Universe completely reimagines the original color for something new.



81, 10.984, 249.965



91, 14.673, 250.487



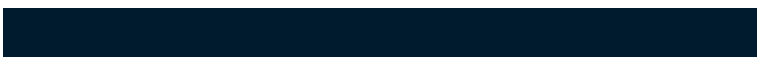
77, 18.255, 288.550



44, 3.732, 248.978



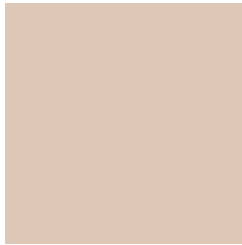
41, 46.956, 276.359



8, 16.266, 265.880

Previews

White Background



This preview shows how the CIELCh color 82, 11.686, 65.883 looks on a white background.

Color Contrast Check

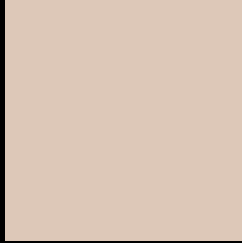
Large Text (above 18pt) WCAG AA × Fail

Any Text WCAG AA × Fail

Large Text (above 18pt) WCAG AAA × Fail

Any Text WCAG AAA × Fail

Black Background



This preview shows how the CIELCh color 82, 11.686, 65.883 looks on a black background.

Color Contrast Check

Large Text (above 18pt) WCAG AA ✓ Pass

Any Text WCAG AA ✓ Pass

Large Text (above 18pt) WCAG AAA ✓ Pass

Any Text WCAG AAA ✓ Pass

If you want to check with other color combinations, try the [Color Contrast Checker](#).

CIELCh 82, 11.686, 65.883

Background



This preview shows how black text looks on a background with the CIELCh color 82, 11.686, 65.883.

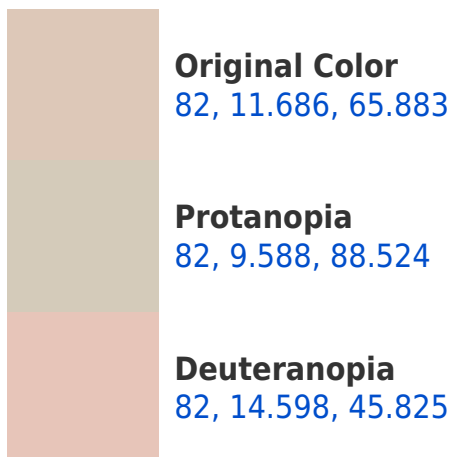



This preview shows how white text looks on a background with the CIELCh color 82, 11.686, 65.883.

Color Blindness Simulation

Color vision deficiency is a very complex topic, and I could not describe the different causes any better than Wikipedia does, so if you want to learn more, you should check out their [article about color blindness](#).

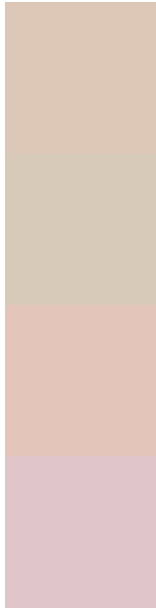
Dichromacy





Tritanopia
82, 13.586, 341.978

Trichromacy



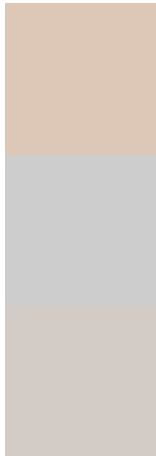
Original Color
82, 11.686, 65.883

Protanomaly
82, 10.243, 80.471

Deuteranomaly
82, 13.124, 51.458

Tritanomaly
82, 9.895, 7.847

Monochromacy



Original Color
82, 11.686, 65.883

Achromatopsia
82, 0.010, 296.813

Achromatomaly
82, 4.323, 66.489

CSS Examples

Text

The CSS property to change the color of the text to CIELCh 82, 11.686, 65.883 is called "color". The color property can be set on classes, ids or directly on the HTML element.

This example shows how text in the color `rgb(221, 200, 184)` looks like.

```
.text, #text, p{  
    color:rgb(221, 200, 184)  
}
```

If you want to add a text shadow in that color use the text-shadow property, you can generate a text shadow directly with our [CSS Text Shadow Generator](#).

Here you see how black text with a 4 pixel rgb(221, 200, 184) colored shadow looks like.

```
.shadow{ text-shadow: 4px 4px 2px rgb(221, 200, 184) }
```

Border

The CSS property to change the border of an element to CIELCh 82, 11.686, 65.883 is called "border". The border property can be set on classes, ids or directly on the HTML element.

This example shows the color as border, it can be applied via the CSS property "border" or "border-color".

```
.border, #border, table{ border:4px solid rgb(221, 200, 184) }
```

If only the border color should be changed use the property border-color.

```
.border{ border-color:rgb(221, 200, 184) }
```

If you want to add a box shadow in that color use:

Here you see how a box with a 4 pixel rgb(221, 200, 184) colored shadow looks like.

```
.boxshadow{ -moz-box-shadow:4px 4px 4px  
4px rgb(221, 200, 184); -webkit-box-  
shadow:4px 4px 4px 4px rgb(221, 200, 184);  
box-shadow:4px 4px 4px 4px rgb(221, 200,  
184) }
```

Background

The CSS property to change the background color of an element to CIELCh 82, 11.686, 65.883 is called "background". The background property can be set on classes, ids or directly on the HTML element.

```
.background, #background, body{  
background: rgb(221, 200, 184) }
```

If only the background color should be changed can be used:

```
.background{ background-color: rgb(221,  
200, 184) }
```

This example shows the color as background, it is applied via the CSS property "background".

To optimize and compress your CSS code, you can use our [online CSS compressor and optimizer](#) based on csstidy. If you want to create a linear or radial gradient as background or border, check our [CSS Gradient Generator](#).

Hey! You found this booklet interesting? Support Converting Colors with the new Membership Option!

The pro membership hides all ads, plus gives you double the colors in the color bucket, and more awesome pro features!

[Learn more, Memberships starting at \\$2.50/m!](#)

**Follow me
on Twitter!**

@ConvertingColor