

Converting Colors

CIELCh(82, 12.599, 34.746)

Have a look what the booklet for
CIELCh(82, 12.599, 34.746) contains.

CIELCh(82, 12.599, 34.746)	3
<i>Conversions</i>	4
<i>Details</i>	6
<i>Harmonies</i>	11
<i>Previews</i>	20
<i>Color Blindness Simulation</i>	23
<i>CSS Examples</i>	26

Color

CIELCh(82, 12.599, 34.746)

Conversions

Conversions Part 1	
Format	Color
Hex	E5C5BF
RGB	229, 197, 191
RGB Percent	90%, 77%, 75%
CMY	0.1023, 0.2277, 0.2513
CMYK	0.00, 0.14, 0.17, 0.10
HSL	9°, 42%, 82%
HSV	9°, 17%, 90%
XYZ	61.6295, 60.2982, 57.6346
YIQ	205.8840, 20.9980, 4.9180

Conversions

Conversions Part 2

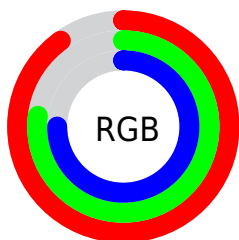
Format	Color
RYB	229, 198, 191
Decimal	15058367
CIELab	82.00, 10.35, 7.18
CIELCh	82, 12.599, 34.746
Yxy	60.2982, 0.3432, 0.3358
Android (android.graphics.Color)	4293248447 (0xFFE5C5BF)
YUV	205.8840, -7.3378, 20.2727
Hunter-Lab	77.6519, 5.7781, 10.3502

Details

The CIELCh color **82, 12.599, 34.746** is a light color, and the websafe version is hex **FFCCCC**. A complement of this color would be **87, 11.277, 214.994**, and the grayscale version is **83, 0.010, 296.813**.

A 20% lighter version of the original color is **100, 3.555, 104.188**, and **62, 12.533, 33.316** is the 20% darker color. If you saturate the color by 10%, you get **77, 21.057, 35.002**, and if you desaturate by 10%, it is **87, 4.803, 34.596**.

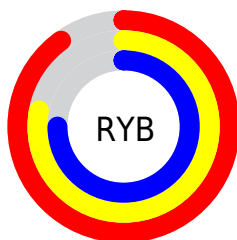
Distribution



Red (90%)

Green (77%)

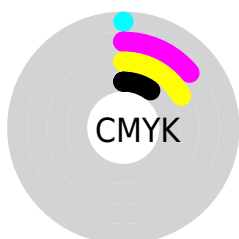
Blue (75%)



Red (90%)

Yellow (78%)

Blue (75%)

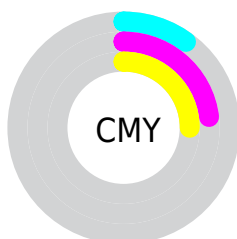


Cyan (0%)

Magenta (14%)

Yellow (17%)

Black (10%)



Cyan (10%)

Magenta (23%)

Yellow (25%)

Brightness & Saturation Gradients

These gradients show how the CIELCh color 82, 12.599, 34.746 changes by changing the brightness by 10 percent. The first figure shows a shift by +10% for each color and the second figure -10%.

Similar to the brightness gradients but the following saturation gradients show a change of the CIELCh color 82, 12.599, 34.746 by changing the saturation by 10% instead.

 82, 12.599, 34.746

 82, 12.599, 34.746

 100, 12.599,
34.746

 72, 12.599, 34.746

 62, 12.599, 34.746

 52, 12.599, 34.746

 42, 12.599, 34.746

 32, 12.599, 34.746

 22, 12.599, 34.746

 12, 12.599, 34.746

 2, 12.599, 34.746

 0, 12.599, 34.746

 82, 12.599, 34.746

 82, 12.599, 34.746

 77, 21.057, 35.002

 87, 4.803, 34.596

 72, 30.213, 35.421

 93, 2.381, 215.003

 67, 40.065, 36.069

 98, 8.793, 199.761

 62, 50.549, 36.994

 98, 8.880, 198.919

 58, 61.501, 38.218

 55, 72.565, 39.683

 52, 82.964, 41.118

 50, 91.062, 41.840

 49, 93.326, 42.074

Harmonies

Complementary

The Complementary color scheme is a pair of colors which are on the opposite of each other on the color wheel.



82, 12.599, 34.746



87, 11.277, 214.994

Rectangle

The Rectangle color scheme consists of four colors that form a rectangle on the color wheel.



82, 12.599, 34.746



82, 12.599, 84.746



82, 12.599, 214.746



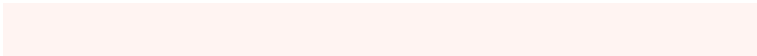
82, 12.599, 264.746

Sweetspot

The Sweet Spot groups the original color and five complimentary colors.



82, 12.598, 34.757



97, 3.947, 34.553



81, 21.922, 329.832



51, 2.701, 34.575



0, 0.000, 0.000



53, 0.007, 296.813

Same Dimension

The Same Dimension uses a secret algorithm to generate beautiful new colors.



82, 12.598, 34.757



88, 16.815, 34.827



87, 13.834, 87.642



45, 4.193, 34.647



38, 77.117, 42.398



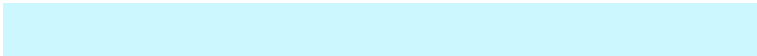
8, 24.283, 30.582

Inverse Universe

The Inverse Universe completely reimagines the original color for something new.



87, 11.277, 214.994



95, 14.669, 215.078



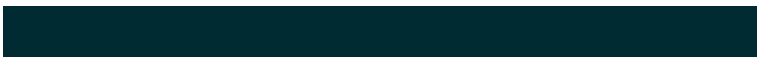
82, 13.744, 272.112



47, 3.946, 214.899



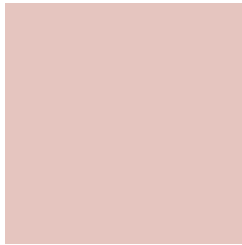
57, 33.321, 226.308



15, 14.060, 221.091

Previews

White Background



This preview shows how the CIELCh color 82, 12.599, 34.746 looks on a white background.

Color Contrast Check

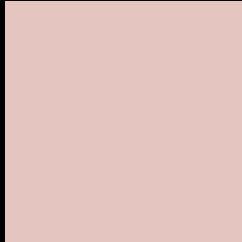
Large Text (above 18pt) WCAG AA × Fail

Any Text WCAG AA × Fail

Large Text (above 18pt) WCAG AAA × Fail

Any Text WCAG AAA × Fail

Black Background



This preview shows how the CIELCh color 82, 12.599, 34.746 looks on a black background.

Color Contrast Check

Large Text (above 18pt) WCAG AA ✓ Pass

Any Text WCAG AA ✓ Pass

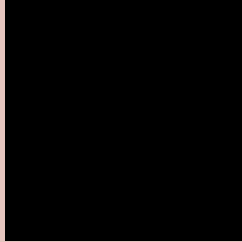
Large Text (above 18pt) WCAG AAA ✓ Pass

Any Text WCAG AAA ✓ Pass

If you want to check with other color combinations, try the [Color Contrast Checker](#).

CIELCh 82, 12.599, 34.746

Background



This preview shows how black text looks on a background with the CIELCh color 82, 12.599, 34.746.



This preview shows how white text looks on a background with the CIELCh color 82, 12.599, 34.746.

Color Blindness Simulation

Color vision deficiency is a very complex topic, and I could not describe the different causes any better than Wikipedia does, so if you want to learn more, you should check out their [article about color blindness](#).

Dichromacy



Original Color

82, 12.599, 34.746

Protanopia

82, 5.404, 80.853




Deuteranopia

82, 12.599, 34.746


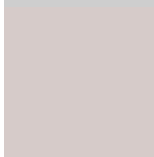


Tritanopia
82, 15.771, 350.568

Trichromacy

	Original Color 82, 12.599, 34.746
	Protanomaly 82, 7.340, 54.760
	Deuteranomaly 82, 12.599, 34.746
	Tritanomaly 82, 13.564, 4.710

Monochromacy

	Original Color 82, 12.599, 34.746
	Achromatopsia 83, 0.010, 296.813
	Achromatomaly 82, 4.190, 34.138

CSS Examples

Text

The CSS property to change the color of the text to CIELCh 82, 12.599, 34.746 is called "color". The color property can be set on classes, ids or directly on the HTML element.

This example shows how text in the color `rgb(229, 197, 191)` looks like.

```
.text, #text, p{  
    color:rgb(229, 197, 191)  
}
```

If you want to add a text shadow in that color use the text-shadow property, you can generate a text shadow directly with our [CSS Text Shadow Generator](#).

Here you see how black text with a 4 pixel rgb(229, 197, 191) colored shadow looks like.

```
.shadow{ text-shadow: 4px 4px 2px rgb(229, 197, 191) }
```

Border

The CSS property to change the border of an element to CIELCh 82, 12.599, 34.746 is called "border". The border property can be set on classes, ids or directly on the HTML element.

This example shows the color as border, it can be applied via the CSS property "border" or "border-color".

```
.border, #border, table{ border:4px solid rgb(229, 197, 191) }
```

If only the border color should be changed use the property border-color.

```
.border{ border-color:rgb(229, 197, 191) }
```

If you want to add a box shadow in that color use:

Here you see how a box with a 4 pixel rgb(229, 197, 191) colored shadow looks like.

```
.boxshadow{ -moz-box-shadow:4px 4px 4px  
4px rgb(229, 197, 191); -webkit-box-  
shadow:4px 4px 4px 4px rgb(229, 197, 191);  
box-shadow:4px 4px 4px 4px rgb(229, 197,  
191) }
```

Background

The CSS property to change the background color of an element to CIELCh 82, 12.599, 34.746 is called "background". The background property can be set on classes, ids or directly on the HTML element.

```
.background, #background, body{  
background: rgb(229, 197, 191) }
```

If only the background color should be changed can be used:

```
.background{ background-color: rgb(229,  
197, 191) }
```

This example shows the color as background, it is applied via the CSS property "background".

To optimize and compress your CSS code, you can use our [online CSS compressor and optimizer](#) based on csstidy. If you want to create a linear or radial gradient as background or border, check our [CSS Gradient Generator](#).

Hey! You found this booklet
interesting? Support Converting
Colors with the new Membership
Option!

The pro membership hides all ads, plus gives you
double the colors in the color bucket, and more
awesome pro features!

[Learn more, Memberships starting at \\$2.50/m!](#)

**Follow me
on Twitter!**

@ConvertingColor