

Converting Colors

CIELCh(82, 12.807, 15.676)

Have a look what the booklet for
CIELCh(82, 12.807, 15.676) contains.

CIELCh(82, 12.820, 15.682)	3
<i>Conversions</i>	4
<i>Details</i>	6
<i>Harmonies</i>	11
<i>Previews</i>	20
<i>Color Blindness Simulation</i>	23
<i>CSS Examples</i>	26

Color

CIELCh(82, 12.820, 15.682)

Conversions

Conversions Part 1

Format	Color
Hex	E6C4C6
RGB	230, 196, 198
RGB Percent	90%, 77%, 78%
CMY	0.0985, 0.2318, 0.2240
CMYK	0.00, 0.15, 0.14, 0.10
HSL	356°, 40%, 83%
HSV	356°, 15%, 90%
XYZ	62.4837, 60.2982, 61.6973
YIQ	206.3940, 19.6220, 7.8300

Conversions

Conversions Part 2

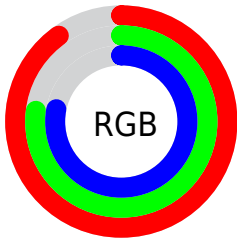
Format	Color
R _Y B	230, 196, 198
Decimal	15123654
CIE Lab	82.00, 12.34, 3.47
CIE LCh	82, 12.820, 15.682
Yxy	60.2982, 0.3387, 0.3269
Android (android.graphics.Color)	4293313734 (0xFFE6C4C6)
YUV	206.3940, -4.1382, 20.7025
Hunter-Lab	77.6519, 7.7418, 7.2482

Details

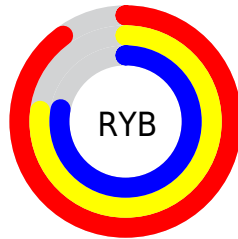
The CIELCh color **82, 12.820, 15.682** is a light color, and the websafe version is hex **FFCCCC**. A complement of this color would be **89, 11.773, 193.562**, and the grayscale version is **83, 0.010, 296.813**.

A 20% lighter version of the original color is **100, 1.250, 324.238**, and **62, 12.861, 15.722** is the 20% darker color. If you saturate the color by 10%, you get **76, 22.249, 16.773**, and if you desaturate by 10%, it is **88, 4.004, 14.735**.

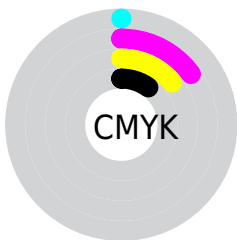
Distribution



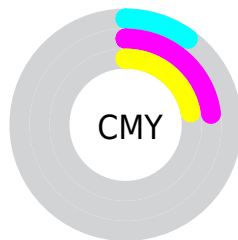
- Red (90%)
- Green (77%)
- Blue (78%)



- Red (90%)
- Yellow (77%)
- Blue (78%)



- Cyan (0%)
- Magenta (15%)
- Yellow (14%)
- Black (10%)



- Cyan (10%)
- Magenta (23%)
- Yellow (22%)


Brightness & Saturation Gradients

These gradients show how the CIELCh color 82, 12.820, 15.682 changes by changing the brightness by 10 percent. The first figure shows a shift by +10% for each color and the second figure -10%.

Similar to the brightness gradients but the following saturation gradients show a change of the CIELCh color 82, 12.820, 15.682 by changing the saturation by 10% instead.

 82, 12.820, 15.682

 82, 12.820, 15.682

 100, 12.820,
15.682

 72, 12.820, 15.682

 62, 12.820, 15.682

 52, 12.820, 15.682

 42, 12.820, 15.682

 32, 12.820, 15.682

 22, 12.820, 15.682

 12, 12.820, 15.682

 2, 12.820, 15.682

 0, 12.820, 15.682

82, 12.820, 15.682

82, 12.820, 15.682

76, 22.249, 16.773

88, 4.004, 14.735

70, 32.256, 18.126

95, 4.201, 194.336

65, 42.721, 19.851

98, 8.563, 198.941

60, 53.427, 22.066

55, 64.063, 24.896

52, 74.256, 28.411

50, 83.582, 32.489

48, 91.312, 36.557

48, 94.358, 38.181

Harmonies

Complementary

The Complementary color scheme is a pair of colors which are on the opposite of each other on the color wheel.



82, 12.820, 15.682



89, 11.773, 193.562

Rectangle

The Rectangle color scheme consists of four colors that form a rectangle on the color wheel.



82, 12.820, 15.682



82, 12.820, 65.682



82, 12.820, 195.682



82, 12.820, 245.682

Sweetspot

The Sweet Spot groups the original color and five complimentary colors.



82, 12.818, 15.691



97, 3.630, 14.648



83, 21.280, 323.379



51, 2.587, 14.734



0, 0.000, 0.000



53, 0.007, 296.813

Same Dimension

The Same Dimension uses a secret algorithm to generate beautiful new colors.



82, 12.818, 15.691



88, 17.173, 16.026



86, 10.600, 66.192



45, 4.824, 15.186



37, 77.524, 37.610



6, 26.922, 19.335

Inverse Universe

The Inverse Universe completely reimagines the original color for something new.



82, 12.818, 15.691



88, 17.173, 16.026



85, 10.043, 249.787



45, 4.824, 15.186



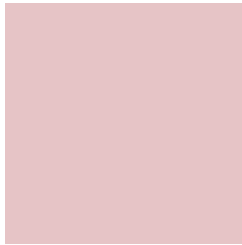
37, 77.524, 37.610



6, 26.922, 19.335

Previews

White Background



This preview shows how the CIELCh color 82, 12.820, 15.682 looks on a white background.

Color Contrast Check

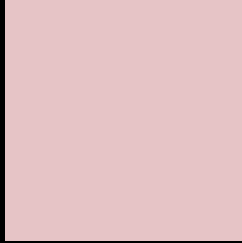
Large Text (above 18pt) WCAG AA × Fail

Any Text WCAG AA × Fail

Large Text (above 18pt) WCAG AAA × Fail

Any Text WCAG AAA × Fail

Black Background



This preview shows how the CIELCh color 82, 12.820, 15.682 looks on a black background.

Color Contrast Check

Large Text (above 18pt) WCAG AA ✓ Pass

Any Text WCAG AA ✓ Pass

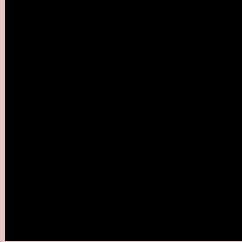
Large Text (above 18pt) WCAG AAA ✓ Pass

Any Text WCAG AAA ✓ Pass

If you want to check with other color combinations, try the [Color Contrast Checker](#).

CIELCh 82, 12.820, 15.682

Background



This preview shows how black text looks on a background with the CIELCh color 82, 12.820, 15.682.

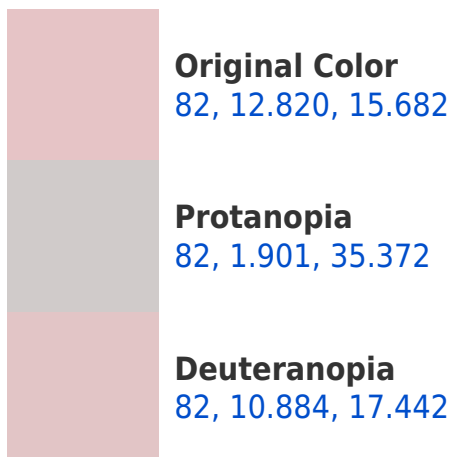


This preview shows how white text looks on a background with the CIELCh color 82, 12.820, 15.682.

Color Blindness Simulation

Color vision deficiency is a very complex topic, and I could not describe the different causes any better than Wikipedia does, so if you want to learn more, you should check out their [article about color blindness](#).

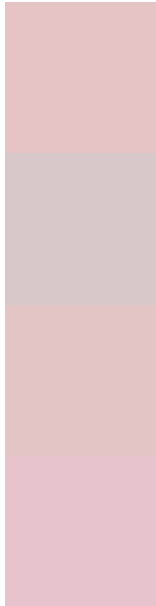
Dichromacy





Tritanopia
82, 15.771, 350.568

Trichromacy



Original Color
82, 12.820, 15.682

Protanomaly
82, 5.948, 14.686

Deuteranomaly
82, 11.266, 17.569

Tritanomaly
82, 14.365, 359.044

Monochromacy



Original Color
82, 12.820, 15.682

Achromatopsia
83, 0.010, 296.813

Achromatomaly
82, 4.823, 13.385

CSS Examples

Text

The CSS property to change the color of the text to CIELCh 82, 12.820, 15.682 is called "color". The color property can be set on classes, ids or directly on the HTML element.

This example shows how text in the color `rgb(230, 196, 198)` looks like.

```
.text, #text, p{  
    color:rgb(230, 196, 198)  
}
```

If you want to add a text shadow in that color use the text-shadow property, you can generate a text shadow directly with our [CSS Text Shadow Generator](#).

Here you see how black text with a 4 pixel rgb(230, 196, 198) colored shadow looks like.

```
.shadow{ text-shadow: 4px 4px 2px rgb(230, 196, 198) }
```

Border

The CSS property to change the border of an element to CIELCh 82, 12.820, 15.682 is called "border". The border property can be set on classes, ids or directly on the HTML element.

This example shows the color as border, it can be applied via the CSS property "border" or "border-color".

```
.border, #border, table{ border:4px solid rgb(230, 196, 198) }
```

If only the border color should be changed use the property `border-color`.

```
.border{ border-color:rgb(230, 196, 198) }
```

If you want to add a box shadow in that color use:

Here you see how a box with a 4 pixel `rgb(230, 196, 198)` colored shadow looks like.

```
.boxshadow{ -moz-box-shadow:4px 4px 4px  
4px rgb(230, 196, 198); -webkit-box-  
shadow:4px 4px 4px 4px rgb(230, 196, 198);  
box-shadow:4px 4px 4px 4px rgb(230, 196,  
198) }
```

Background

The CSS property to change the background color of an element to CIELCh 82, 12.820, 15.682 is called "background". The background property can be set on classes, ids or directly on the HTML element.

```
.background, #background, body{  
background: rgb(230, 196, 198) }
```

If only the background color should be changed can be used:

```
.background{ background-color: rgb(230,  
196, 198) }
```

This example shows the color as background, it is applied via the CSS property "background".

To optimize and compress your CSS code, you can use our [online CSS compressor and optimizer](#) based on csstidy. If you want to create a linear or radial gradient as background or border, check our [CSS Gradient Generator](#).

Hey! You found this booklet interesting? Support Converting Colors with the new Membership Option!

The pro membership hides all ads, plus gives you double the colors in the color bucket, and more awesome pro features!

[Learn more, Memberships starting at \\$2.50/m!](#)

**Follow me
on Twitter!**

@ConvertingColor