

Converting Colors

CIE LCh(82, 14.116, 18.168)

Have a look what the booklet for
CIELCh(82, 14.116, 18.168) contains.

CIELCh(82, 13.982, 18.326)	3
<i>Conversions</i>	4
<i>Details</i>	6
<i>Harmonies</i>	11
<i>Previews</i>	20
<i>Color Blindness Simulation</i>	23
<i>CSS Examples</i>	26

Color

CIELCh(82, 13.982, 18.326)

Conversions

Conversions Part 1

Format	Color
Hex	E8C3C4
RGB	232, 195, 196
RGB Percent	91%, 76%, 77%
CMY	0.0894, 0.2345, 0.2306
CMYK	0.00, 0.16, 0.16, 0.09
HSL	358°, 45%, 84%
HSV	358°, 16%, 91%
XYZ	62.8856, 60.2982, 60.6619
YIQ	206.1770, 21.7310, 8.1550

Conversions

Conversions Part 2

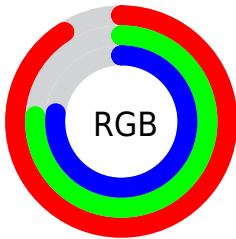
Format	Color
R _Y B	232, 195, 196
Decimal	15254468
CIE Lab	82.00, 13.27, 4.40
CIE LCh	82, 13.982, 18.326
Yxy	60.2982, 0.3421, 0.3280
Android (android.graphics.Color)	4293444548 (0xFFE8C3C4)
YUV	206.1770, -5.0173, 22.6468
Hunter-Lab	77.6519, 8.6656, 8.0388

Details

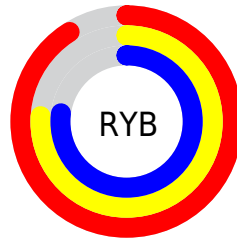
The CIELCh color **82, 13.982, 18.326** is a light color, and the websafe version is hex **FFCCCC**. A complement of this color would be **90, 12.670, 196.242**, and the grayscale version is **83, 0.010, 296.813**.

A 20% lighter version of the original color is **99, 1.178, 353.325**, and **62, 14.115, 18.552** is the 20% darker color. If you saturate the color by 10%, you get **76, 23.612, 19.380**, and if you desaturate by 10%, it is **88, 5.014, 17.448**.

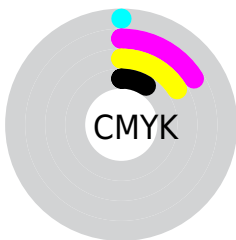
Distribution



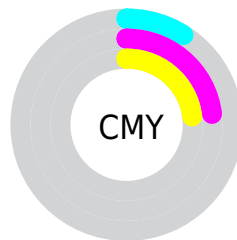
- Red (91%)
- Green (76%)
- Blue (77%)



- Red (91%)
- Yellow (76%)
- Blue (77%)



- Cyan (0%)
- Magenta (16%)
- Yellow (16%)
- Black (9%)



- Cyan (9%)
- Magenta (23%)
- Yellow (23%)


Brightness & Saturation Gradients

These gradients show how the CIELCh color 82, 13.982, 18.326 changes by changing the brightness by 10 percent. The first figure shows a shift by +10% for each color and the second figure -10%.

Similar to the brightness gradients but the following saturation gradients show a change of the CIELCh color 82, 13.982, 18.326 by changing the saturation by 10% instead.

 82, 13.982, 18.326

 82, 13.982, 18.326

 100, 13.982,
18.326

 72, 13.982, 18.326

 62, 13.982, 18.326

 52, 13.982, 18.326

 42, 13.982, 18.326

 32, 13.982, 18.326

 22, 13.982, 18.326

 12, 13.982, 18.326

 2, 13.982, 18.326

 0, 13.982, 18.326

82, 13.982, 18.326

82, 13.982, 18.326

76, 23.612, 19.380

88, 5.014, 17.448

70, 33.872, 20.711

95, 3.302, 197.114

65, 44.644, 22.431

98, 7.789, 198.998

60, 55.710, 24.656

56, 66.749, 27.496

52, 77.350, 30.973

50, 86.931, 34.838

49, 94.269, 38.267

49, 96.328, 39.174

Harmonies

Complementary

The Complementary color scheme is a pair of colors which are on the opposite of each other on the color wheel.



82, 13.982, 18.326



90, 12.670, 196.242

Rectangle

The Rectangle color scheme consists of four colors that form a rectangle on the color wheel.



82, 13.982, 18.326



82, 13.982, 68.326



82, 13.982, 198.326



82, 13.982, 248.326

Sweetspot

The Sweet Spot groups the original color and five complimentary colors.



82, 13.980, 18.335



97, 4.541, 17.361



83, 23.362, 324.381



51, 3.107, 17.429



0, 0.000, 0.000



53, 0.007, 296.813

Same Dimension

The Same Dimension uses a secret algorithm to generate beautiful new colors.



82, 13.980, 18.335



87, 18.199, 18.640



86, 11.721, 69.808



46, 4.904, 17.759



38, 79.647, 38.884



7, 28.419, 21.626

Inverse Universe

The Inverse Universe completely reimagines the original color for something new.



82, 13.980, 18.335



87, 18.199, 18.640



85, 11.152, 253.899



46, 4.904, 17.759



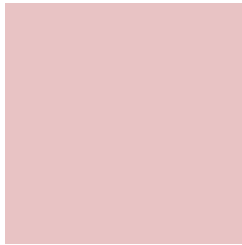
38, 79.647, 38.884



7, 28.419, 21.626

Previews

White Background



This preview shows how the CIELCh color 82, 13.982, 18.326 looks on a white background.

Color Contrast Check

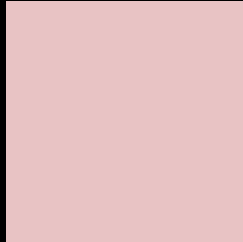
Large Text (above 18pt) WCAG AA × Fail

Any Text WCAG AA × Fail

Large Text (above 18pt) WCAG AAA × Fail

Any Text WCAG AAA × Fail

Black Background



This preview shows how the CIELCh color 82, 13.982, 18.326 looks on a black background.

Color Contrast Check

Large Text (above 18pt) WCAG AA ✓ Pass

Any Text WCAG AA ✓ Pass

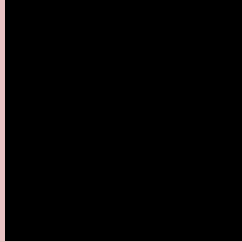
Large Text (above 18pt) WCAG AAA ✓ Pass

Any Text WCAG AAA ✓ Pass

If you want to check with other color combinations, try the [Color Contrast Checker](#).

CIELCh 82, 13.982, 18.326

Background



This preview shows how black text looks on a background with the CIELCh color 82, 13.982, 18.326.

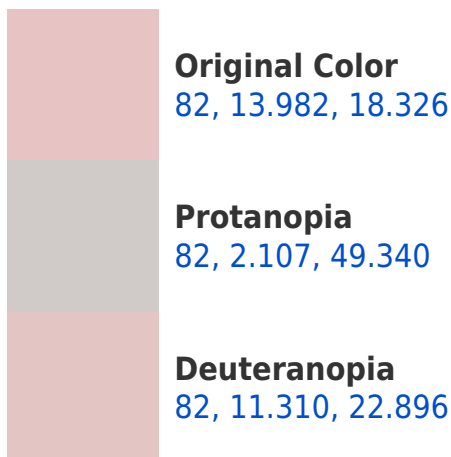


This preview shows how white text looks on a background with the CIELCh color 82, 13.982, 18.326.

Color Blindness Simulation

Color vision deficiency is a very complex topic, and I could not describe the different causes any better than Wikipedia does, so if you want to learn more, you should check out their [article about color blindness](#).

Dichromacy





Tritanopia
82, 17.092, 353.254

Trichromacy



Original Color
82, 13.982, 18.326

Protanomaly
82, 6.338, 24.569

Deuteranomaly
82, 12.441, 20.339

Tritanomaly
82, 15.438, 0.712

Monochromacy



Original Color
82, 13.982, 18.326

Achromatopsia
83, 0.010, 296.813

Achromatomaly
82, 5.171, 19.693

CSS Examples

Text

The CSS property to change the color of the text to CIELCh 82, 13.982, 18.326 is called "color". The color property can be set on classes, ids or directly on the HTML element.

This example shows how text in the color `rgb(232, 195, 196)` looks like.

```
.text, #text, p{  
    color:rgb(232, 195, 196)  
}
```

If you want to add a text shadow in that color use the text-shadow property, you can generate a text shadow directly with our [CSS Text Shadow Generator](#).

Here you see how black text with a 4 pixel rgb(232, 195, 196) colored shadow looks like.

```
.shadow{ text-shadow: 4px 4px 2px rgb(232, 195, 196) }
```

Border

The CSS property to change the border of an element to CIELCh 82, 13.982, 18.326 is called "border". The border property can be set on classes, ids or directly on the HTML element.

This example shows the color as border, it can be applied via the CSS property "border" or "border-color".

```
.border, #border, table{ border:4px solid rgb(232, 195, 196) }
```

If only the border color should be changed use the property `border-color`.

```
.border{ border-color:rgb(232, 195, 196) }
```

If you want to add a box shadow in that color use:

Here you see how a box with a 4 pixel `rgb(232, 195, 196)` colored shadow looks like.

```
.boxshadow{ -moz-box-shadow:4px 4px 4px  
4px rgb(232, 195, 196); -webkit-box-  
shadow:4px 4px 4px 4px rgb(232, 195, 196);  
box-shadow:4px 4px 4px 4px rgb(232, 195,  
196) }
```

Background

The CSS property to change the background color of an element to CIELCh 82, 13.982, 18.326 is called "background". The background property can be set on classes, ids or directly on the HTML element.

```
.background, #background, body{  
background: rgb(232, 195, 196) }
```

If only the background color should be changed can be used:

```
.background{ background-color: rgb(232,  
195, 196) }
```

This example shows the color as background, it is applied via the CSS property "background".

To optimize and compress your CSS code, you can use our [online CSS compressor and optimizer](#) based on csstidy. If you want to create a linear or radial gradient as background or border, check our [CSS Gradient Generator](#).

Hey! You found this booklet interesting? Support Converting Colors with the new Membership Option!

The pro membership hides all ads, plus gives you double the colors in the color bucket, and more awesome pro features!

[Learn more, Memberships starting at \\$2.50/m!](#)

**Follow me
on Twitter!**

@ConvertingColor