

Converting Colors

CIELCh(82, 14.369, 61.288)

Have a look what the booklet for
CIELCh(82, 14.369, 61.288) contains.

CIELCh(82, 14.165, 61.845)	3
<i>Conversions</i>	4
<i>Details</i>	6
<i>Harmonies</i>	11
<i>Previews</i>	20
<i>Color Blindness Simulation</i>	23
<i>CSS Examples</i>	26

Color

CIELCh(82, 14.165, 61.845)

Conversions

Conversions Part 1

Format	Color
Hex	E2C7B5
RGB	226, 199, 181
RGB Percent	89%, 78%, 71%
CMY	0.1140, 0.2199, 0.2905
CMYK	0.00, 0.12, 0.20, 0.11
HSL	24°, 44%, 80%
HSV	24°, 20%, 89%
XYZ	60.0754, 60.2982, 52.1457
YIQ	205.0210, 21.8700, 0.1260

Conversions

Conversions Part 2

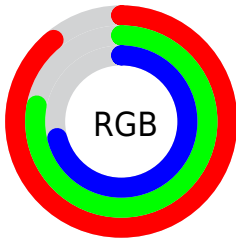
Format	Color
R _Y B	226, 211, 181
Decimal	14862261
CIE Lab	82.00, 6.68, 12.49
CIE LCh	82, 14.165, 61.845
Yxy	60.2982, 0.3482, 0.3495
Android (android.graphics.Color)	4293052341 (0xFFE2C7B5)
YUV	205.0210, -11.8424, 18.3986
Hunter-Lab	77.6519, 2.2058, 14.5413

Details

The CIELCh color $82, 14.165, 61.845$ is a light color, and the websafe version is hex `FFCCCC`. A complement of this color would be $82, 12.996, 246.420$, and the grayscale version is $82, 0.010, 296.813$.

A 20% lighter version of the original color is $100, 9.112, 109.487$, and $62, 14.149, 61.961$ is the 20% darker color. If you saturate the color by 10%, you get $78, 21.978, 60.885$, and if you desaturate by 10%, it is $86, 6.832, 62.828$.

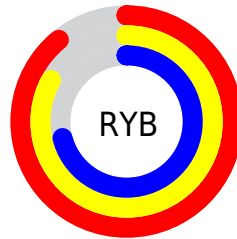
Distribution



Red (89%)

Green (78%)

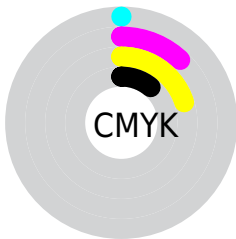
Blue (71%)



Red (89%)

Yellow (83%)

Blue (71%)

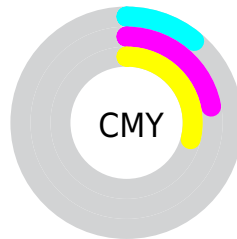


Cyan (0%)

Magenta (12%)

Yellow (20%)

Black (11%)



Cyan (11%)

Magenta (22%)

Yellow (29%)


Brightness & Saturation Gradients

These gradients show how the CIELCh color 82, 14.165, 61.845 changes by changing the brightness by 10 percent. The first figure shows a shift by +10% for each color and the second figure -10%.

Similar to the brightness gradients but the following saturation gradients show a change of the CIELCh color 82, 14.165, 61.845 by changing the saturation by 10% instead.

 82, 14.165, 61.845

 82, 14.165, 61.845

 100, 14.165,
61.845

 72, 14.165, 61.845

 62, 14.165, 61.845

 52, 14.165, 61.845

 42, 14.165, 61.845

 32, 14.165, 61.845

 22, 14.165, 61.845

 12, 14.165, 61.845

 2, 14.165, 61.845

 0, 14.165, 61.845

82, 14.165, 61.845

82, 14.165, 61.845

78, 21.978, 60.885

86, 6.832, 62.828

74, 30.300, 59.945

90, 0.063, 251.721

71, 39.132, 59.045

94, 6.564, 245.012

67, 48.413, 58.178

98, 9.264, 204.815

64, 57.960, 57.296

98, 9.870, 198.849

61, 67.335, 56.268

58, 75.644, 54.800

56, 81.965, 52.648

56, 82.017, 52.633

Harmonies

Complementary

The Complementary color scheme is a pair of colors which are on the opposite of each other on the color wheel.



82, 14.165, 61.845



82, 12.996, 246.420

Rectangle

The Rectangle color scheme consists of four colors that form a rectangle on the color wheel.



82, 14.165, 61.845



82, 14.165, 111.845



82, 14.165, 241.845



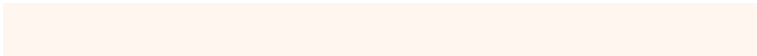
82, 14.165, 291.845

Sweetspot

The Sweet Spot groups the original color and five complimentary colors.



82, 14.165, 61.856



97, 4.504, 63.175



78, 21.889, 340.191



52, 2.994, 63.120



0, 0.000, 0.000



53, 0.007, 296.813

Same Dimension

The Same Dimension uses a secret algorithm to generate beautiful new colors.



82, 14.165, 61.856



90, 19.089, 61.442



88, 21.064, 103.695



45, 3.885, 62.872



44, 67.676, 53.284



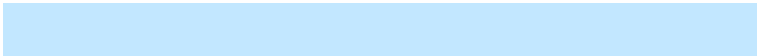
10, 20.000, 49.317

Inverse Universe

The Inverse Universe completely reimagines the original color for something new.



82, 12.996, 246.420



90, 17.155, 247.078



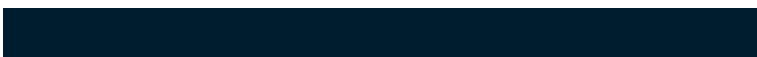
76, 21.834, 288.223



45, 3.742, 245.039



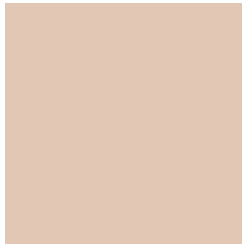
43, 44.488, 272.166



10, 16.128, 262.157

Previews

White Background



This preview shows how the CIELCh color 82, 14.165, 61.845 looks on a white background.

Color Contrast Check

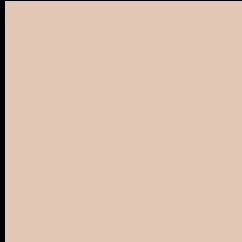
Large Text (above 18pt) WCAG AA × Fail

Any Text WCAG AA × Fail

Large Text (above 18pt) WCAG AAA × Fail

Any Text WCAG AAA × Fail

Black Background



This preview shows how the CIELCh color 82, 14.165, 61.845 looks on a black background.

Color Contrast Check

Large Text (above 18pt) WCAG AA ✓ Pass

Any Text WCAG AA ✓ Pass

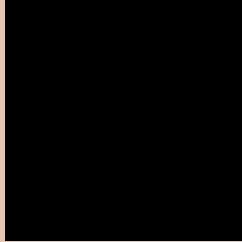
Large Text (above 18pt) WCAG AAA ✓ Pass

Any Text WCAG AAA ✓ Pass

If you want to check with other color combinations, try the [Color Contrast Checker](#).

CIELCh 82, 14.165, 61.845

Background



This preview shows how black text looks on a background with the CIELCh color 82, 14.165, 61.845.



This preview shows how white text looks on a background with the CIELCh color 82, 14.165, 61.845.

Color Blindness Simulation

Color vision deficiency is a very complex topic, and I could not describe the different causes any better than Wikipedia does, so if you want to learn more, you should check out their [article about color blindness](#).

Dichromacy



Original Color

82, 14.165, 61.845

Protanopia

82, 11.213, 89.343

Deuteranopia

82, 16.073, 51.732



Tritanopia
82, 15.120, 349.063

Trichromacy



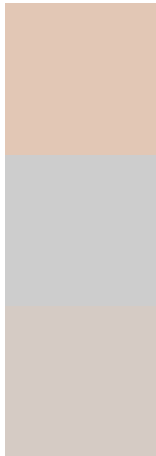
Original Color
82, 14.165, 61.845

Protanomaly
82, 12.214, 79.057

Deuteranomaly
82, 15.377, 55.600

Tritanomaly
82, 12.470, 13.093

Monochromacy



Original Color
82, 14.165, 61.845

Achromatopsia
82, 0.010, 296.813

Achromatomaly
82, 5.228, 64.390

CSS Examples

Text

The CSS property to change the color of the text to CIELCh 82, 14.165, 61.845 is called "color". The color property can be set on classes, ids or directly on the HTML element.

This example shows how text in the color `rgb(226, 199, 181)` looks like.

```
.text, #text, p{  
    color:rgb(226, 199, 181)  
}
```

If you want to add a text shadow in that color use the text-shadow property, you can generate a text shadow directly with our [CSS Text Shadow Generator](#).

Here you see how black text with a 4 pixel rgb(226, 199, 181) colored shadow looks like.

```
.shadow{ text-shadow: 4px 4px 2px rgb(226, 199, 181) }
```

Border

The CSS property to change the border of an element to CIELCh 82, 14.165, 61.845 is called "border". The border property can be set on classes, ids or directly on the HTML element.

This example shows the color as border, it can be applied via the CSS property "border" or "border-color".

```
.border, #border, table{ border:4px solid rgb(226, 199, 181) }
```

If only the border color should be changed use the property border-color.

```
.border{ border-color:rgb(226, 199, 181) }
```

If you want to add a box shadow in that color use:

Here you see how a box with a 4 pixel rgb(226, 199, 181) colored shadow looks like.

```
.boxshadow{ -moz-box-shadow:4px 4px 4px  
4px rgb(226, 199, 181); -webkit-box-  
shadow:4px 4px 4px 4px rgb(226, 199, 181);  
box-shadow:4px 4px 4px 4px rgb(226, 199,  
181) }
```

Background

The CSS property to change the background color of an element to CIELCh 82, 14.165, 61.845 is called "background". The background property can be set on classes, ids or directly on the HTML element.

```
.background, #background, body{  
background: rgb(226, 199, 181) }
```

If only the background color should be changed can be used:

```
.background{ background-color: rgb(226,  
199, 181) }
```

This example shows the color as background, it is applied via the CSS property "background".

To optimize and compress your CSS code, you can use our [online CSS compressor and optimizer](#) based on csstidy. If you want to create a linear or radial gradient as background or border, check our [CSS Gradient Generator](#).

Hey! You found this booklet interesting? Support Converting Colors with the new Membership Option!

The pro membership hides all ads, plus gives you double the colors in the color bucket, and more awesome pro features!

[Learn more, Memberships starting at \\$2.50/m!](#)

**Follow me
on Twitter!**

@ConvertingColor