

Converting Colors

CIELCh(82, 14.818, 38.469)

Have a look what the booklet for
CIELCh(82, 14.818, 38.469) contains.

CIELCh(82, 15.032, 38.704)	3
<i>Conversions</i>	4
<i>Details</i>	6
<i>Harmonies</i>	11
<i>Previews</i>	20
<i>Color Blindness Simulation</i>	23
<i>CSS Examples</i>	26

Color

CIELCh(82, 15.032, 38.704)

Conversions

Conversions Part 1

Format	Color
Hex	E9C4BB
RGB	233, 196, 187
RGB Percent	91%, 77%, 73%
CMY	0.0868, 0.2319, 0.2672
CMYK	0.00, 0.16, 0.20, 0.09
HSL	12°, 51%, 82%
HSV	12°, 20%, 91%
XYZ	62.2202, 60.2982, 55.2957
YIQ	206.0370, 24.9410, 5.0450

Conversions

Conversions Part 2

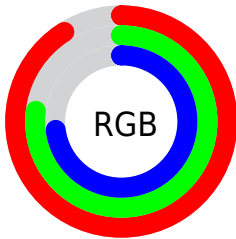
Format	Color
R _Y B	233, 198, 187
Decimal	15320251
CIE Lab	82.00, 11.73, 9.40
CIE LCh	82, 15.032, 38.704
Yxy	60.2982, 0.3499, 0.3391
Android (android.graphics.Color)	4293510331 (0xFFE9C4BB)
YUV	206.0370, -9.3852, 23.6466
Hunter-Lab	77.6519, 7.1360, 12.1361

Details

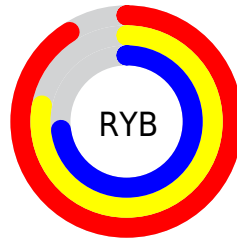
The CIELCh color **82, 15.032, 38.704** is a light color, and the websafe version is hex **FFCCCC**. A complement of this color would be **87, 13.182, 219.709**, and the grayscale version is **83, 0.010, 296.813**.

A 20% lighter version of the original color is **99, 5.109, 101.783**, and **62, 15.141, 37.733** is the 20% darker color. If you saturate the color by 10%, you get **77, 23.614, 38.794**, and if you desaturate by 10%, it is **87, 7.118, 38.738**.

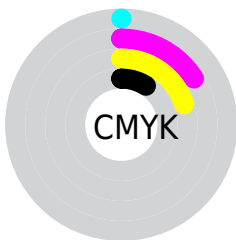
Distribution



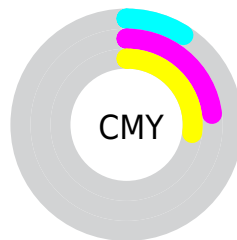
- Red (91%)
- Green (77%)
- Blue (73%)



- Red (91%)
- Yellow (78%)
- Blue (73%)



- Cyan (0%)
- Magenta (16%)
- Yellow (20%)
- Black (9%)



- Cyan (9%)
- Magenta (23%)
- Yellow (27%)


Brightness & Saturation Gradients

These gradients show how the CIELCh color 82, 15.032, 38.704 changes by changing the brightness by 10 percent. The first figure shows a shift by +10% for each color and the second figure -10%.

Similar to the brightness gradients but the following saturation gradients show a change of the CIELCh color 82, 15.032, 38.704 by changing the saturation by 10% instead.

 82, 15.032, 38.704

 82, 15.032, 38.704

 100, 15.032,
38.704

 72, 15.032, 38.704

 62, 15.032, 38.704

 52, 15.032, 38.704

 42, 15.032, 38.704

 32, 15.032, 38.704

 22, 15.032, 38.704

 12, 15.032, 38.704

 2, 15.032, 38.704

 0, 15.032, 38.704

82, 15.032, 38.704

82, 15.032, 38.704

77, 23.614, 38.794

87, 7.118, 38.738

72, 32.900, 39.038

92, 0.177, 222.438

67, 42.885, 39.490

98, 6.701, 212.121

63, 53.497, 40.181

98, 7.570, 199.014

59, 64.542, 41.106

56, 75.576, 42.150

53, 85.593, 42.947

51, 93.083, 43.014

51, 93.256, 43.026

Harmonies

Complementary

The Complementary color scheme is a pair of colors which are on the opposite of each other on the color wheel.



82, 15.032, 38.704



87, 13.182, 219.709

Rectangle

The Rectangle color scheme consists of four colors that form a rectangle on the color wheel.



82, 15.032, 38.704



82, 15.032, 88.704



82, 15.032, 218.704



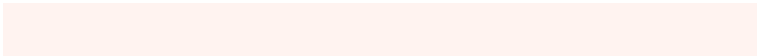
82, 15.032, 268.704

Sweetspot

The Sweet Spot groups the original color and five complimentary colors.



82, 15.031, 38.714



97, 4.643, 38.736



81, 25.867, 331.177



51, 3.088, 38.740



0, 0.000, 0.000



53, 0.007, 296.813

Same Dimension

The Same Dimension uses a secret algorithm to generate beautiful new colors.



82, 15.031, 38.714



87, 20.025, 38.732



88, 17.277, 89.934



46, 4.167, 38.739



40, 76.834, 43.408



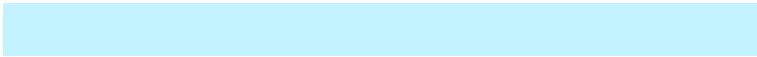
9, 24.991, 33.933

Inverse Universe

The Inverse Universe completely reimagines the original color for something new.



87, 13.182, 219.709



93, 17.000, 219.940



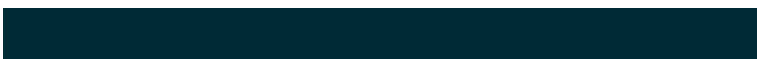
81, 17.271, 275.240



48, 3.927, 219.331



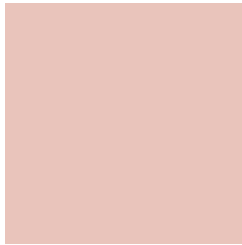
56, 33.903, 234.577



15, 14.418, 228.329

Previews

White Background



This preview shows how the CIELCh color 82, 15.032, 38.704 looks on a white background.

Color Contrast Check

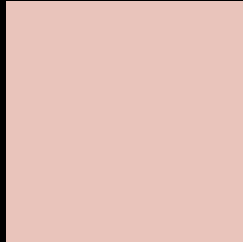
Large Text (above 18pt) WCAG AA × Fail

Any Text WCAG AA × Fail

Large Text (above 18pt) WCAG AAA × Fail

Any Text WCAG AAA × Fail

Black Background



This preview shows how the CIELCh color 82, 15.032, 38.704 looks on a black background.

Color Contrast Check

Large Text (above 18pt) WCAG AA ✓ Pass

Any Text WCAG AA ✓ Pass

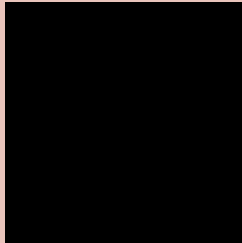
Large Text (above 18pt) WCAG AAA ✓ Pass

Any Text WCAG AAA ✓ Pass

If you want to check with other color combinations, try the [Color Contrast Checker](#).

CIELCh 82, 15.032, 38.704

Background



This preview shows how black text looks on a background with the CIELCh color 82, 15.032, 38.704.



This preview shows how white text looks on a background with the CIELCh color 82, 15.032, 38.704.

Color Blindness Simulation

Color vision deficiency is a very complex topic, and I could not describe the different causes any better than Wikipedia does, so if you want to learn more, you should check out their [article about color blindness](#).

Dichromacy



Original Color

82, 15.032, 38.704

Protanopia

82, 6.995, 84.179

Deuteranopia

82, 13.751, 42.703



Tritanopia
82, 17.424, 353.866

Trichromacy



Original Color
82, 15.032, 38.704

Protanomaly
82, 9.257, 58.529

Deuteranomaly
82, 14.116, 42.115

Tritanomaly
82, 15.328, 8.753

Monochromacy



Original Color
82, 15.032, 38.704

Achromatopsia
83, 0.010, 296.813

Achromatomaly
82, 5.426, 36.612

CSS Examples

Text

The CSS property to change the color of the text to CIELCh 82, 15.032, 38.704 is called "color". The color property can be set on classes, ids or directly on the HTML element.

This example shows how text in the color `rgb(233, 196, 187)` looks like.

```
.text, #text, p{  
    color:rgb(233, 196, 187)  
}
```

If you want to add a text shadow in that color use the text-shadow property, you can generate a text shadow directly with our [CSS Text Shadow Generator](#).

Here you see how black text with a 4 pixel rgb(233, 196, 187) colored shadow looks like.

```
.shadow{ text-shadow: 4px 4px 2px rgb(233, 196, 187) }
```

Border

The CSS property to change the border of an element to CIELCh 82, 15.032, 38.704 is called "border". The border property can be set on classes, ids or directly on the HTML element.

This example shows the color as border, it can be applied via the CSS property "border" or "border-color".

```
.border, #border, table{ border:4px solid rgb(233, 196, 187) }
```

If only the border color should be changed use the property `border-color`.

```
.border{ border-color:rgb(233, 196, 187) }
```

If you want to add a box shadow in that color use:

Here you see how a box with a 4 pixel `rgb(233, 196, 187)` colored shadow looks like.

```
.boxshadow{ -moz-box-shadow:4px 4px 4px  
4px rgb(233, 196, 187); -webkit-box-  
shadow:4px 4px 4px 4px rgb(233, 196, 187);  
box-shadow:4px 4px 4px 4px rgb(233, 196,  
187) }
```

Background

The CSS property to change the background color of an element to CIELCh 82, 15.032, 38.704 is called "background". The background property can be set on classes, ids or directly on the HTML element.

```
.background, #background, body{  
background: rgb(233, 196, 187) }
```

If only the background color should be changed can be used:

```
.background{ background-color: rgb(233,  
196, 187) }
```

This example shows the color as background, it is applied via the CSS property "background".

To optimize and compress your CSS code, you can use our [online CSS compressor and optimizer](#) based on csstidy. If you want to create a linear or radial gradient as background or border, check our [CSS Gradient Generator](#).

Hey! You found this booklet interesting? Support Converting Colors with the new Membership Option!

The pro membership hides all ads, plus gives you double the colors in the color bucket, and more awesome pro features!

[Learn more, Memberships starting at \\$2.50/m!](#)

**Follow me
on Twitter!**

@ConvertingColor