

Converting Colors

CIELCh(82, 16.193, 62.940)

Have a look what the booklet for
CIELCh(82, 16.193, 62.940) contains.

CIELCh(82, 16.193, 62.940)	3
<i>Conversions</i>	4
<i>Details</i>	6
<i>Harmonies</i>	11
<i>Previews</i>	20
<i>Color Blindness Simulation</i>	23
<i>CSS Examples</i>	26

Color

CIELCh(82, 16.193, 62.940)

Conversions

Conversions Part 1

Format	Color
Hex	E4C6B1
RGB	228, 198, 177
RGB Percent	89%, 78%, 69%
CMY	0.1044, 0.2221, 0.3045
CMYK	0.00, 0.13, 0.22, 0.10
HSL	25°, 49%, 80%
HSV	25°, 22%, 90%
XYZ	60.3626, 60.2982, 50.2385
YIQ	204.5760, 24.6210, -0.1710

Conversions

Conversions Part 2

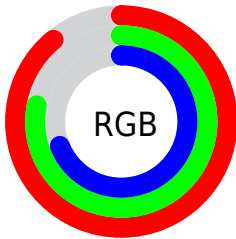
Format	Color
R _Y B	228, 213, 177
Decimal	14993073
CIE Lab	82.00, 7.37, 14.42
CIE LCh	82, 16.193, 62.940
Yxy	60.2982, 0.3532, 0.3528
Android (android.graphics.Color)	4293183153 (0xFFE4C6B1)
YUV	204.5760, -13.5950, 20.5428
Hunter-Lab	77.6519, 2.8659, 15.9975

Details

The CIELCh color **82, 16.193, 62.940** is a light color, and the websafe version is hex **FFCCCC**. A complement of this color would be **82, 14.746, 248.274**, and the grayscale version is **82, 0.010, 296.813**.

A 20% lighter version of the original color is **99, 11.136, 109.335**, and **62, 16.336, 62.976** is the 20% darker color. If you saturate the color by 10%, you get **78, 24.194, 61.939**, and if you desaturate by 10%, it is **86, 8.671, 63.967**.

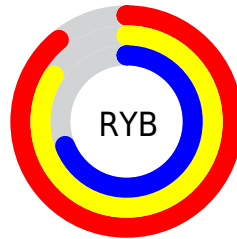
Distribution



Red (89%)

Green (78%)

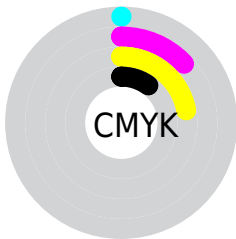
Blue (69%)



Red (89%)

Yellow (84%)

Blue (69%)

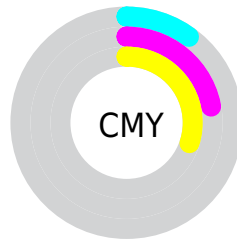


Cyan (0%)

Magenta (13%)

Yellow (22%)

Black (10%)



Cyan (10%)

Magenta (22%)

Yellow (30%)


Brightness & Saturation Gradients

These gradients show how the CIELCh color 82, 16.193, 62.940 changes by changing the brightness by 10 percent. The first figure shows a shift by +10% for each color and the second figure -10%.

Similar to the brightness gradients but the following saturation gradients show a change of the CIELCh color 82, 16.193, 62.940 by changing the saturation by 10% instead.

 82, 16.193, 62.940

 82, 16.193, 62.940

 100, 16.193,
62.940

 72, 16.193, 62.940

 62, 16.193, 62.940

 52, 16.193, 62.940

 42, 16.193, 62.940

 32, 16.193, 62.940

 22, 16.193, 62.940

 12, 16.193, 62.940

 2, 16.193, 62.940

 0, 16.193, 62.940

82, 16.193, 62.940

82, 16.193, 62.940

78, 24.194, 61.939

86, 8.671, 63.967

75, 32.698, 60.957

90, 1.591, 64.773

71, 41.690, 60.007

94, 5.092, 246.221

68, 51.083, 59.074

97, 8.174, 209.463

64, 60.640, 58.094

98, 9.059, 198.906

61, 69.820, 56.904

59, 77.593, 55.163

57, 82.174, 53.390

Harmonies

Complementary

The Complementary color scheme is a pair of colors which are on the opposite of each other on the color wheel.



82, 16.193, 62.940



82, 14.746, 248.274

Rectangle

The Rectangle color scheme consists of four colors that form a rectangle on the color wheel.



82, 16.193, 62.940



82, 16.193, 112.940



82, 16.193, 242.940



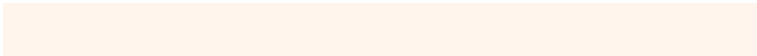
82, 16.193, 292.940

Sweetspot

The Sweet Spot groups the original color and five complimentary colors.



82, 16.193, 62.950



97, 5.292, 64.481



78, 24.799, 340.405



51, 3.445, 64.425



0, 0.000, 0.000



53, 0.007, 296.813

Same Dimension

The Same Dimension uses a secret algorithm to generate beautiful new colors.



82, 16.193, 62.950



89, 21.729, 62.460



88, 23.828, 103.433



46, 3.972, 64.253



45, 67.997, 54.032



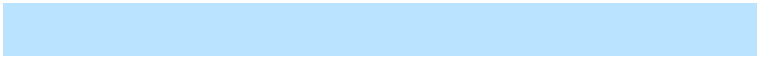
11, 21.201, 51.170

Inverse Universe

The Inverse Universe completely reimagines the original color for something new.



82, 14.746, 248.274



88, 19.340, 249.083



75, 24.817, 288.574



46, 3.832, 246.481



43, 46.082, 273.814



10, 17.075, 264.440

Previews

White Background



This preview shows how the CIELCh color 82, 16.193, 62.940 looks on a white background.

Color Contrast Check

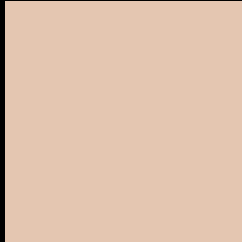
Large Text (above 18pt) WCAG AA × Fail

Any Text WCAG AA × Fail

Large Text (above 18pt) WCAG AAA × Fail

Any Text WCAG AAA × Fail

Black Background



This preview shows how the CIELCh color 82, 16.193, 62.940 looks on a black background.

Color Contrast Check

Large Text (above 18pt) WCAG AA ✓ Pass

Any Text WCAG AA ✓ Pass

Large Text (above 18pt) WCAG AAA ✓ Pass

Any Text WCAG AAA ✓ Pass

If you want to check with other color combinations, try the [Color Contrast Checker](#).

CIELCh 82, 16.193, 62.940

Background



This preview shows how black text looks on a background with the CIELCh color 82, 16.193, 62.940.



This preview shows how white text looks on a background with the CIELCh color 82, 16.193, 62.940.

Color Blindness Simulation

Color vision deficiency is a very complex topic, and I could not describe the different causes any better than Wikipedia does, so if you want to learn more, you should check out their [article about color blindness](#).

Dichromacy



Original Color

82, 16.193, 62.940

Protanopia

82, 12.720, 91.544

Deuteranopia

82, 17.392, 53.178



Tritanopia
82, 16.094, 351.275

Trichromacy



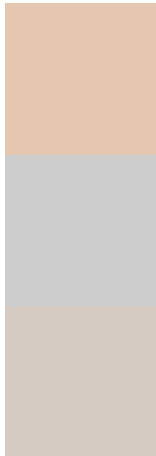
Original Color
82, 16.193, 62.940

Protanomaly
82, 13.550, 78.282

Deuteranomaly
82, 16.715, 56.800

Tritanomaly
82, 13.197, 18.128

Monochromacy



Original Color
82, 16.193, 62.940

Achromatopsia
82, 0.010, 296.813

Achromatomaly
82, 5.874, 65.393

CSS Examples

Text

The CSS property to change the color of the text to CIELCh 82, 16.193, 62.940 is called "color". The color property can be set on classes, ids or directly on the HTML element.

This example shows how text in the color `rgb(228, 198, 177)` looks like.

```
.text, #text, p{  
    color:rgb(228, 198, 177)  
}
```

If you want to add a text shadow in that color use the text-shadow property, you can generate a text shadow directly with our [CSS Text Shadow Generator](#).

Here you see how black text with a 4 pixel rgb(228, 198, 177) colored shadow looks like.

```
.shadow{ text-shadow: 4px 4px 2px rgb(228, 198, 177) }
```

Border

The CSS property to change the border of an element to CIELCh 82, 16.193, 62.940 is called "border". The border property can be set on classes, ids or directly on the HTML element.

This example shows the color as border, it can be applied via the CSS property "border" or "border-color".

```
.border, #border, table{ border:4px solid rgb(228, 198, 177) }
```

If only the border color should be changed use the property border-color.

```
.border{ border-color:rgb(228, 198, 177) }
```

If you want to add a box shadow in that color use:

Here you see how a box with a 4 pixel rgb(228, 198, 177) colored shadow looks like.

```
.boxshadow{ -moz-box-shadow:4px 4px 4px  
4px rgb(228, 198, 177); -webkit-box-  
shadow:4px 4px 4px 4px rgb(228, 198, 177);  
box-shadow:4px 4px 4px 4px rgb(228, 198,  
177) }
```

Background

The CSS property to change the background color of an element to CIELCh 82, 16.193, 62.940 is called "background". The background property can be set on classes, ids or directly on the HTML element.

```
.background, #background, body{  
background: rgb(228, 198, 177) }
```

If only the background color should be changed can be used:

```
.background{ background-color: rgb(228,  
198, 177) }
```

This example shows the color as background, it is applied via the CSS property "background".

To optimize and compress your CSS code, you can use our [online CSS compressor and optimizer](#) based on csstidy. If you want to create a linear or radial gradient as background or border, check our [CSS Gradient Generator](#).

Hey! You found this booklet interesting? Support Converting Colors with the new Membership Option!

The pro membership hides all ads, plus gives you double the colors in the color bucket, and more awesome pro features!

[Learn more, Memberships starting at \\$2.50/m!](#)

**Follow me
on Twitter!**

@ConvertingColor