

Converting Colors

CIELCh(82, 17.350, 74.543)

Have a look what the booklet for
CIELCh(82, 17.350, 74.543) contains.

CIELCh(82, 17.350, 74.543)	3
<i>Conversions</i>	4
<i>Details</i>	6
<i>Harmonies</i>	11
<i>Previews</i>	20
<i>Color Blindness Simulation</i>	23
<i>CSS Examples</i>	26

Color

CIELCh(82, 17.350, 74.543)

Conversions

Conversions Part 1

Format	Color
Hex	E1C8AD
RGB	225, 200, 173
RGB Percent	88%, 78%, 68%
CMY	0.1179, 0.2159, 0.3218
CMYK	0.00, 0.11, 0.23, 0.12
HSL	31°, 46%, 78%
HSV	31°, 23%, 88%
XYZ	59.2144, 60.2982, 48.0267
YIQ	204.3970, 23.5670, -3.0970

Conversions

Conversions Part 2

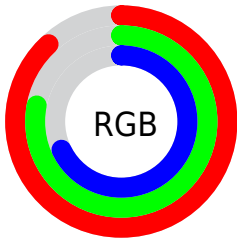
Format	Color
R _Y B	221, 225, 173
Decimal	14796973
CIE Lab	82.00, 4.62, 16.72
CIE LCh	82, 17.350, 74.543
Yxy	60.2982, 0.3534, 0.3599
Android (android.graphics.Color)	4292987053 (0xFFE1C8AD)
YUV	204.3970, -15.4787, 18.0688
Hunter-Lab	77.6519, 0.2265, 17.6863

Details

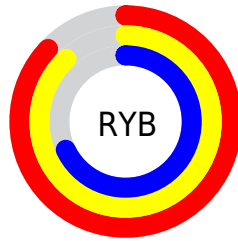
The CIELCh color $82, 17.350, 74.543$ is a light color, and the websafe version is hex `CCCC99`. A complement of this color would be $79, 16.427, 260.949$, and the grayscale version is $82, 0.010, 296.813$.

A 20% lighter version of the original color is $99, 13.663, 109.145$, and $62, 17.087, 74.097$ is the 20% darker color. If you saturate the color by 10%, you get $79, 25.413, 73.263$, and if you desaturate by 10%, it is $85, 9.629, 75.811$.

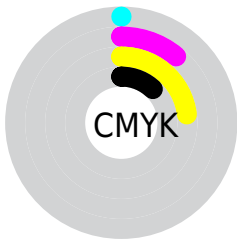
Distribution



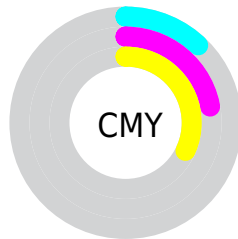
- Red (88%)
- Green (78%)
- Blue (68%)



- Red (87%)
- Yellow (88%)
- Blue (68%)



- Cyan (0%)
- Magenta (11%)
- Yellow (23%)
- Black (12%)



- Cyan (12%)
- Magenta (22%)
- Yellow (32%)


Brightness & Saturation Gradients

These gradients show how the CIELCh color 82, 17.350, 74.543 changes by changing the brightness by 10 percent. The first figure shows a shift by +10% for each color and the second figure -10%.

Similar to the brightness gradients but the following saturation gradients show a change of the CIELCh color 82, 17.350, 74.543 by changing the saturation by 10% instead.

 82, 17.350, 74.543

 82, 17.350, 74.543

 100, 17.350,
74.543

 72, 17.350, 74.543

 62, 17.350, 74.543

 52, 17.350, 74.543

 42, 17.350, 74.543

 32, 17.350, 74.543

 22, 17.350, 74.543

 12, 17.350, 74.543

 2, 17.350, 74.543

 0, 17.350, 74.543

82, 17.350, 74.543

82, 17.350, 74.543

79, 25.413, 73.263

85, 9.629, 75.811

76, 33.811, 71.953

88, 2.233, 76.929

73, 42.495, 70.618

92, 4.864, 258.398

70, 51.326, 69.234

95, 8.559, 244.382

67, 59.995, 67.732

98, 9.857, 201.784

65, 67.896, 65.958

98, 10.190,
198.827

62, 74.046, 63.627

60, 77.131, 61.689

Harmonies

Complementary

The Complementary color scheme is a pair of colors which are on the opposite of each other on the color wheel.



82, 17.350, 74.543



79, 16.427, 260.949

Rectangle

The Rectangle color scheme consists of four colors that form a rectangle on the color wheel.



82, 17.350, 74.543



82, 17.350, 124.543



82, 17.350, 254.543



82, 17.350, 304.543

Sweetspot

The Sweet Spot groups the original color and five complimentary colors.



82, 17.350, 74.552



97, 5.613, 76.538



76, 23.515, 346.661



52, 3.652, 76.468



0, 0.000, 0.000



53, 0.007, 296.813

Same Dimension

The Same Dimension uses a secret algorithm to generate beautiful new colors.



82, 17.350, 74.552



90, 23.531, 73.900



88, 26.834, 108.653



45, 4.127, 76.258



48, 64.008, 62.351



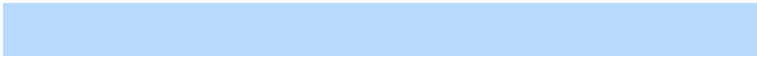
12, 19.667, 62.419

Inverse Universe

The Inverse Universe completely reimagines the original color for something new.



79, 16.427, 260.949



86, 21.977, 261.900



72, 28.334, 293.444



45, 4.049, 258.787



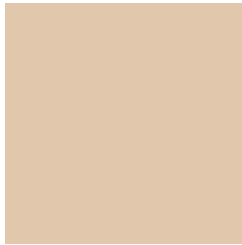
37, 56.612, 285.742



8, 19.594, 276.621

Previews

White Background



This preview shows how the CIELCh color 82, 17.350, 74.543 looks on a white background.

Color Contrast Check

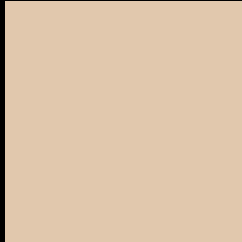
Large Text (above 18pt) WCAG AA × Fail

Any Text WCAG AA × Fail

Large Text (above 18pt) WCAG AAA × Fail

Any Text WCAG AAA × Fail

Black Background



This preview shows how the CIELCh color 82, 17.350, 74.543 looks on a black background.

Color Contrast Check

Large Text (above 18pt) WCAG AA ✓ Pass

Any Text WCAG AA ✓ Pass

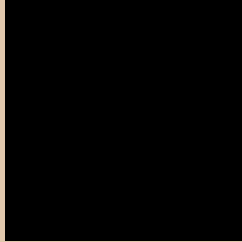
Large Text (above 18pt) WCAG AAA ✓ Pass

Any Text WCAG AAA ✓ Pass

If you want to check with other color combinations, try the [Color Contrast Checker](#).

CIELCh 82, 17.350, 74.543

Background



This preview shows how black text looks on a background with the CIELCh color 82, 17.350, 74.543.



This preview shows how white text looks on a background with the CIELCh color 82, 17.350, 74.543.

Color Blindness Simulation

Color vision deficiency is a very complex topic, and I could not describe the different causes any better than Wikipedia does, so if you want to learn more, you should check out their [article about color blindness](#).

Dichromacy



Original Color


82, 17.350, 74.543

Protanopia

82, 15.366, 92.768

Deuteranopia

82, 19.060, 57.510



Tritanopia
82, 14.806, 348.270

Trichromacy



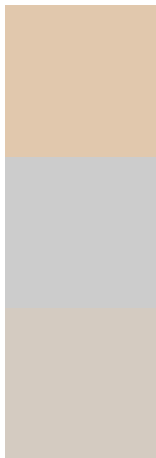
Original Color
82, 17.350, 74.543

Protanomaly
82, 16.042, 86.025

Deuteranomaly
82, 18.157, 61.773

Tritanomaly
82, 11.659, 20.270

Monochromacy



Original Color
82, 17.350, 74.543

Achromatopsia
82, 0.010, 296.813

Achromatomaly
82, 6.244, 77.046

CSS Examples

Text

The CSS property to change the color of the text to CIELCh 82, 17.350, 74.543 is called "color". The color property can be set on classes, ids or directly on the HTML element.

This example shows how text in the color `rgb(225, 200, 173)` looks like.

```
.text, #text, p{  
    color:rgb(225, 200, 173)  
}
```

If you want to add a text shadow in that color use the text-shadow property, you can generate a text shadow directly with our [CSS Text Shadow Generator](#).

Here you see how black text with a 4 pixel rgb(225, 200, 173) colored shadow looks like.

```
.shadow{ text-shadow: 4px 4px 2px rgb(225, 200, 173) }
```

Border

The CSS property to change the border of an element to CIELCh 82, 17.350, 74.543 is called "border". The border property can be set on classes, ids or directly on the HTML element.

This example shows the color as border, it can be applied via the CSS property "border" or "border-color".

```
.border, #border, table{ border:4px solid rgb(225, 200, 173) }
```

If only the border color should be changed use the property `border-color`.

```
.border{ border-color:rgb(225, 200, 173) }
```

If you want to add a box shadow in that color use:

Here you see how a box with a 4 pixel `rgb(225, 200, 173)` colored shadow looks like.

```
.boxshadow{ -moz-box-shadow:4px 4px 4px  
4px rgb(225, 200, 173); -webkit-box-  
shadow:4px 4px 4px 4px rgb(225, 200, 173);  
box-shadow:4px 4px 4px 4px rgb(225, 200,  
173) }
```

Background

The CSS property to change the background color of an element to CIELCh 82, 17.350, 74.543 is called "background". The background property can be set on classes, ids or directly on the HTML element.

```
.background, #background, body{  
background: rgb(225, 200, 173) }
```

If only the background color should be changed can be used:

```
.background{ background-color: rgb(225,  
200, 173) }
```

This example shows the color as background, it is applied via the CSS property "background".

To optimize and compress your CSS code, you can use our [online CSS compressor and optimizer](#) based on csstidy. If you want to create a linear or radial gradient as background or border, check our [CSS Gradient Generator](#).

Hey! You found this booklet interesting? Support Converting Colors with the new Membership Option!

The pro membership hides all ads, plus gives you double the colors in the color bucket, and more awesome pro features!

[Learn more, Memberships starting at \\$2.50/m!](#)

**Follow me
on Twitter!**

@ConvertingColor