

Converting Colors

CIELCh(82, 17.599, 69.981)

Have a look what the booklet for
CIELCh(82, 17.599, 69.981) contains.

CIELCh(82, 17.657, 70.488)	3
<i>Conversions</i>	4
<i>Details</i>	6
<i>Harmonies</i>	11
<i>Previews</i>	20
<i>Color Blindness Simulation</i>	23
<i>CSS Examples</i>	26

Color

CIELCh(82, 17.657, 70.488)

Conversions

Conversions Part 1

Format	Color
Hex	E3C7AD
RGB	227, 199, 173
RGB Percent	89%, 78%, 68%
CMY	0.1092, 0.2190, 0.3210
CMYK	0.00, 0.12, 0.24, 0.11
HSL	29°, 49%, 78%
HSV	29°, 24%, 89%
XYZ	59.7458, 60.2982, 48.1019
YIQ	204.4080, 25.0340, -2.1500

Conversions

Conversions Part 2

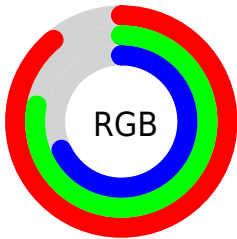
Format	Color
R _Y B	227, 223, 173
Decimal	14927789
CIE Lab	82.00, 5.90, 16.64
CIE LCh	82, 17.657, 70.488
Yxy	60.2982, 0.3553, 0.3586
Android (android.graphics.Color)	4293117869 (0xFFE3C7AD)
YUV	204.4080, -15.4841, 19.8132
Hunter-Lab	77.6519, 1.4479, 17.6288

Details

The CIELCh color $82, 17.657, 70.488$ is a light color, and the websafe version is hex `FFCCCC`. A complement of this color would be $80, 16.435, 256.898$, and the grayscale version is $82, 0.010, 296.813$.

A 20% lighter version of the original color is $99, 13.663, 109.145$, and $62, 17.444, 69.734$ is the 20% darker color. If you saturate the color by 10%, you get $79, 25.734, 69.278$, and if you desaturate by 10%, it is $85, 9.975, 71.699$.

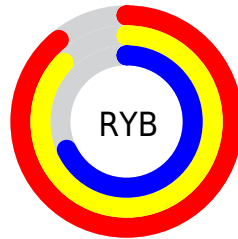
Distribution



Red (89%)

Green (78%)

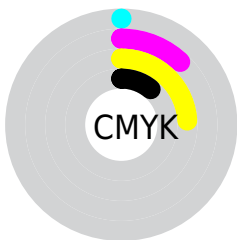
Blue (68%)



Red (89%)

Yellow (87%)

Blue (68%)

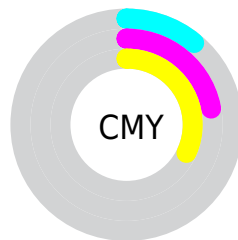


Cyan (0%)

Magenta (12%)

Yellow (24%)

Black (11%)



Cyan (11%)

Magenta (22%)

Yellow (32%)

Brightness & Saturation Gradients

These gradients show how the CIELCh color 82, 17.657, 70.488 changes by changing the brightness by 10 percent. The first figure shows a shift by +10% for each color and the second figure -10%.

Similar to the brightness gradients but the following saturation gradients show a change of the CIELCh color 82, 17.657, 70.488 by changing the saturation by 10% instead.

82, 17.657, 70.488

82, 17.657, 70.488

100, 17.657,
70.488

72, 17.657, 70.488

62, 17.657, 70.488

52, 17.657, 70.488

42, 17.657, 70.488

32, 17.657, 70.488

22, 17.657, 70.488

12, 17.657, 70.488

2, 17.657, 70.488

0, 17.657, 70.488

82, 17.657, 70.488

82, 17.657, 70.488

79, 25.734, 69.278

85, 9.975, 71.699

75, 34.208, 68.053

89, 2.663, 72.788

72, 43.037, 66.819

93, 4.311, 254.226

69, 52.092, 65.550

96, 7.801, 234.233

66, 61.068, 64.171

98, 9.461, 198.878

63, 69.344, 62.511

61, 75.877, 60.246

59, 78.974, 58.551

Harmonies

Complementary

The Complementary color scheme is a pair of colors which are on the opposite of each other on the color wheel.



82, 17.657, 70.488



80, 16.435, 256.898

Rectangle

The Rectangle color scheme consists of four colors that form a rectangle on the color wheel.



82, 17.657, 70.488



82, 17.657, 120.488



82, 17.657, 250.488



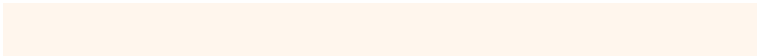
82, 17.657, 300.488

Sweetspot

The Sweet Spot groups the original color and five complimentary colors.



82, 17.657, 70.497



97, 5.473, 72.470



76, 25.168, 343.954



52, 3.562, 72.404



0, 0.000, 0.000



53, 0.007, 296.813

Same Dimension

The Same Dimension uses a secret algorithm to generate beautiful new colors.



82, 17.657, 70.497



89, 23.984, 69.839



89, 26.934, 106.443



46, 4.102, 72.201



47, 65.704, 59.200



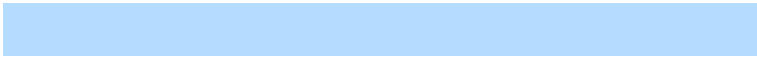
12, 20.931, 58.589

Inverse Universe

The Inverse Universe completely reimagines the original color for something new.



80, 16.435, 256.898



86, 21.914, 257.911



73, 28.381, 291.666



46, 4.001, 254.671



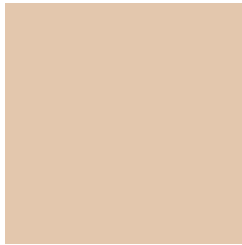
40, 53.116, 282.072



9, 19.164, 273.216

Previews

White Background



This preview shows how the CIELCh color 82, 17.657, 70.488 looks on a white background.

Color Contrast Check

Large Text (above 18pt) WCAG AA × Fail

Any Text WCAG AA × Fail

Large Text (above 18pt) WCAG AAA × Fail

Any Text WCAG AAA × Fail

Black Background



This preview shows how the CIELCh color 82, 17.657, 70.488 looks on a black background.

Color Contrast Check

Large Text (above 18pt) WCAG AA ✓ Pass

Any Text WCAG AA ✓ Pass

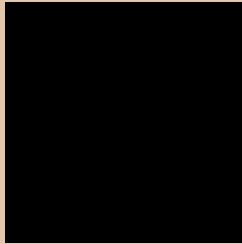
Large Text (above 18pt) WCAG AAA ✓ Pass

Any Text WCAG AAA ✓ Pass

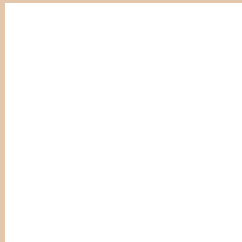
If you want to check with other color combinations, try the [Color Contrast Checker](#).

CIELCh 82, 17.657, 70.488

Background



This preview shows how black text looks on a background with the CIELCh color 82, 17.657, 70.488.



This preview shows how white text looks on a background with the CIELCh color 82, 17.657, 70.488.

Color Blindness Simulation

Color vision deficiency is a very complex topic, and I could not describe the different causes any better than Wikipedia does, so if you want to learn more, you should check out their [article about color blindness](#).

Dichromacy



Original Color
82, 17.657, 70.488

Protanopia
82, 15.759, 94.599

Deuteranopia
82, 19.383, 56.802



Tritanopia
82, 16.094, 351.275

Trichromacy



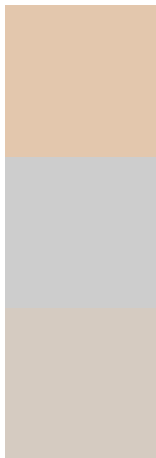
Original Color
82, 17.657, 70.488

Protanomaly
82, 16.201, 84.747

Deuteranomaly
82, 18.460, 60.955

Tritanomaly
82, 12.827, 20.371

Monochromacy



Original Color
82, 17.657, 70.488

Achromatopsia
82, 0.010, 296.813

Achromatomaly
82, 6.455, 74.219

CSS Examples

Text

The CSS property to change the color of the text to CIELCh 82, 17.657, 70.488 is called "color". The color property can be set on classes, ids or directly on the HTML element.

This example shows how text in the color `rgb(227, 199, 173)` looks like.

```
.text, #text, p{  
    color:rgb(227, 199, 173)  
}
```

If you want to add a text shadow in that color use the text-shadow property, you can generate a text shadow directly with our [CSS Text Shadow Generator](#).

Here you see how black text with a 4 pixel rgb(227, 199, 173) colored shadow looks like.

```
.shadow{ text-shadow: 4px 4px 2px rgb(227, 199, 173) }
```

Border

The CSS property to change the border of an element to CIELCh 82, 17.657, 70.488 is called "border". The border property can be set on classes, ids or directly on the HTML element.

This example shows the color as border, it can be applied via the CSS property "border" or "border-color".

```
.border, #border, table{ border:4px solid rgb(227, 199, 173) }
```

If only the border color should be changed use the property `border-color`.

```
.border{ border-color:rgb(227, 199, 173) }
```

If you want to add a box shadow in that color use:

Here you see how a box with a 4 pixel `rgb(227, 199, 173)` colored shadow looks like.

```
.boxshadow{ -moz-box-shadow:4px 4px 4px  
4px rgb(227, 199, 173); -webkit-box-  
shadow:4px 4px 4px 4px rgb(227, 199, 173);  
box-shadow:4px 4px 4px 4px rgb(227, 199,  
173) }
```

Background

The CSS property to change the background color of an element to CIELCh 82, 17.657, 70.488 is called "background". The background property can be set on classes, ids or directly on the HTML element.

```
.background, #background, body{  
background: rgb(227, 199, 173) }
```

If only the background color should be changed can be used:

```
.background{ background-color: rgb(227,  
199, 173) }
```

This example shows the color as background, it is applied via the CSS property "background".

To optimize and compress your CSS code, you can use our [online CSS compressor and optimizer](#) based on csstidy. If you want to create a linear or radial gradient as background or border, check our [CSS Gradient Generator](#).

Hey! You found this booklet interesting? Support Converting Colors with the new Membership Option!

The pro membership hides all ads, plus gives you double the colors in the color bucket, and more awesome pro features!

[Learn more, Memberships starting at \\$2.50/m!](#)

**Follow me
on Twitter!**

@ConvertingColor