

# Converting Colors

CIELCh(82, 17.867, 62.477)

Have a look what the booklet for  
CIELCh(82, 17.867, 62.477) contains.

<b>CIELCh(82, 17.839, 62.629)</b> .....	3
<b><i>Conversions</i></b> .....	4
<b><i>Details</i></b> .....	6
<b><i>Harmonies</i></b> .....	11
<b><i>Previews</i></b> .....	20
<b><i>Color Blindness Simulation</i></b> .....	23
<b><i>CSS Examples</i></b> .....	26

# Color

**CIELCh(82, 17.839, 62.629)**

# Conversions

## Conversions Part 1

Format	Color
Hex	E7C6AF
RGB	231, 198, 175
RGB Percent	91%, 78%, 69%
CMY	0.0952, 0.2245, 0.3147
CMYK	0.00, 0.14, 0.24, 0.10
HSL	25°, 54%, 80%
HSV	25°, 24%, 90%
XYZ	60.7151, 60.2982, 48.8649
YIQ	205.2450, 27.0510, -0.1570

# Conversions

## Conversions Part 2

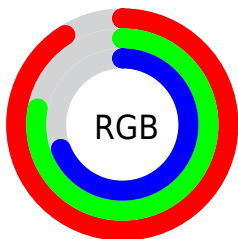
Format	Color
R <sub>Y</sub> B	231, 214, 175
Decimal	15189679
CIE Lab	82.00, 8.20, 15.84
CIE LCh	82, 17.839, 62.629
Yxy	60.2982, 0.3574, 0.3549
Android (android.graphics.Color)	4293379759 (0xFFE7C6AF)
YUV	205.2450, -14.9108, 22.5871
Hunter-Lab	77.6519, 3.6762, 17.0463

# Details

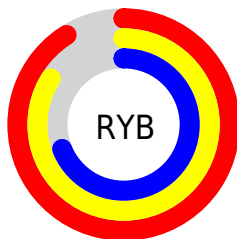
The CIELCh color **82, 17.839, 62.629** is a light color, and the websafe version is hex **FFCCCC**. A complement of this color would be **82, 16.091, 248.461**, and the grayscale version is **82, 0.010, 296.813**.

A 20% lighter version of the original color is **99, 12.147, 109.259**, and **62, 17.703, 61.368** is the 20% darker color. If you saturate the color by 10%, you get **78, 26.005, 61.635**, and if you desaturate by 10%, it is **86, 10.164, 63.655**.

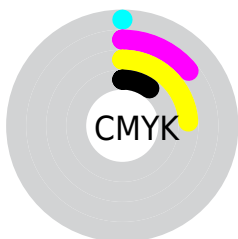
# Distribution



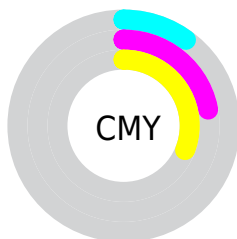
- Red (91%)
- Green (78%)
- Blue (69%)



- Red (91%)
- Yellow (84%)
- Blue (69%)



- Cyan (0%)
- Magenta (14%)
- Yellow (24%)
- Black (10%)



- Cyan (10%)
- Magenta (22%)
- Yellow (31%)

# Brightness & Saturation Gradients


These gradients show how the CIELCh color 82, 17.839, 62.629 changes by changing the brightness by 10 percent. The first figure shows a shift by +10% for each color and the second figure -10%.

Similar to the brightness gradients but the following saturation gradients show a change of the CIELCh color 82, 17.839, 62.629 by changing the saturation by 10% instead.



 82, 17.839, 62.629

 82, 17.839, 62.629

 100, 17.839,  
62.629

 72, 17.839, 62.629

 62, 17.839, 62.629

 52, 17.839, 62.629

 42, 17.839, 62.629

 32, 17.839, 62.629

 22, 17.839, 62.629

 12, 17.839, 62.629

 2, 17.839, 62.629

 0, 17.839, 62.629

82, 17.839, 62.629

82, 17.839, 62.629

78, 26.005, 61.635

86, 10.164, 63.655

74, 34.680, 60.663

90, 2.944, 64.587

71, 43.840, 59.724

94, 3.865, 245.928

68, 53.375, 58.794

98, 7.412, 210.505

64, 63.001, 57.796

98, 8.278, 198.962

61, 72.090, 56.538

59, 79.494, 54.637

57, 82.873, 53.298

# Harmonies

# Complementary

The Complementary color scheme is a pair of colors which are on the opposite of each other on the color wheel.



82, 17.839, 62.629



82, 16.091, 248.461

# Rectangle

The Rectangle color scheme consists of four colors that form a rectangle on the color wheel.



82, 17.839, 62.629



82, 17.839, 112.629



82, 17.839, 242.629



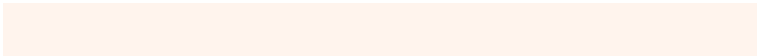
82, 17.839, 292.629

# Sweetspot

The Sweet Spot groups the original color and five complimentary colors.



82, 17.839, 62.638



97, 5.290, 64.361



77, 27.182, 340.579



51, 3.444, 64.305



0, 0.000, 0.000



53, 0.007, 296.813



# Same Dimension

The Same Dimension uses a secret algorithm to generate beautiful new colors.



82, 17.839, 62.638



88, 23.484, 62.144



89, 26.087, 103.223



46, 3.970, 64.133



45, 68.034, 53.962



11, 21.208, 51.066



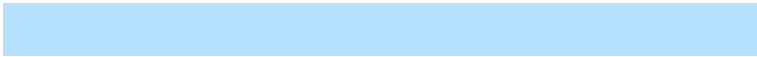


# Inverse Universe

The Inverse Universe completely reimagines the original color for something new.



82, 16.091, 248.461



87, 20.687, 249.315



75, 27.277, 288.864



46, 3.830, 246.357



43, 45.987, 273.679



10, 17.048, 264.300



# Previews

## White Background



This preview shows how the CIELCh color 82, 17.839, 62.629 looks on a white background.

## Color Contrast Check

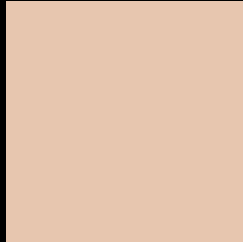
Large Text (above 18pt) WCAG AA × Fail

Any Text WCAG AA × Fail

Large Text (above 18pt) WCAG AAA × Fail

Any Text WCAG AAA × Fail

# Black Background



This preview shows how the CIELCh color 82, 17.839, 62.629 looks on a black background.

## Color Contrast Check

Large Text (above 18pt) WCAG AA ✓ Pass

Any Text WCAG AA ✓ Pass

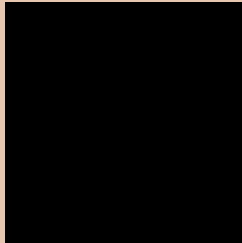
Large Text (above 18pt) WCAG AAA ✓ Pass

Any Text WCAG AAA ✓ Pass

If you want to check with other color combinations, try the [Color Contrast Checker](#).

**CIELCh 82, 17.839, 62.629**

## **Background**



This preview shows how black text looks on a background with the CIELCh color 82, 17.839, 62.629.



This preview shows how white text looks on a background with the CIELCh color 82, 17.839, 62.629.

# Color Blindness Simulation

Color vision deficiency is a very complex topic, and I could not describe the different causes any better than Wikipedia does, so if you want to learn more, you should check out their [article about color blindness](#).

## Dichromacy



### Original Color

82, 17.839, 62.629

### Protanopia

82, 14.229, 93.255

### Deuteranopia

82, 18.714, 56.325



**Tritanopia**  
82, 17.424, 353.866



# Trichromacy



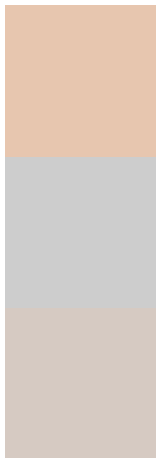
**Original Color**  
82, 17.839, 62.629

**Protanomaly**  
82, 14.937, 81.153

**Deuteranomaly**  
82, 18.403, 59.010

**Tritanomaly**  
82, 14.368, 18.416

# Monochromacy



**Original Color**  
82, 17.839, 62.629

**Achromatopsia**  
82, 0.010, 296.813

**Achromatomaly**  
82, 6.150, 62.872

# CSS Examples

## Text

The CSS property to change the color of the text to CIELCh 82, 17.839, 62.629 is called "color". The color property can be set on classes, ids or directly on the HTML element.

This example shows how text in the color `rgb(231, 198, 175)` looks like.

```
.text, #text, p{  
    color:rgb(231, 198, 175)  
}
```

If you want to add a text shadow in that color use the text-shadow property, you can generate a text shadow directly with our [CSS Text Shadow Generator](#).

Here you see how black text with a 4 pixel rgb(231, 198, 175) colored shadow looks like.

```
.shadow{ text-shadow: 4px 4px 2px rgb(231, 198, 175) }
```

## Border

The CSS property to change the border of an element to CIELCh 82, 17.839, 62.629 is called "border". The border property can be set on classes, ids or directly on the HTML element.

This example shows the color as border, it can be applied via the CSS property "border" or "border-color".

```
.border, #border, table{ border:4px solid rgb(231, 198, 175) }
```

If only the border color should be changed use the property border-color.

```
.border{ border-color:rgb(231, 198, 175) }
```

If you want to add a box shadow in that color use:

Here you see how a box with a 4 pixel rgb(231, 198, 175) colored shadow looks like.

```
.boxshadow{ -moz-box-shadow:4px 4px 4px  
4px rgb(231, 198, 175); -webkit-box-  
shadow:4px 4px 4px 4px rgb(231, 198, 175);  
box-shadow:4px 4px 4px 4px rgb(231, 198,  
175) }
```

# Background

The CSS property to change the background color of an element to CIELCh 82, 17.839, 62.629 is called "background". The background property can be set on classes, ids or directly on the HTML element.

```
.background, #background, body{  
background: rgb(231, 198, 175) }
```

If only the background color should be changed can be used:

```
.background{ background-color: rgb(231,  
198, 175) }
```

This example shows the color as background, it is applied via the CSS property "background".

To optimize and compress your CSS code, you can use our [online CSS compressor and optimizer](#) based on csstidy. If you want to create a linear or radial gradient as background or border, check our [CSS Gradient Generator](#).

Hey! You found this booklet interesting? Support Converting Colors with the new Membership Option!

The pro membership hides all ads, plus gives you double the colors in the color bucket, and more awesome pro features!

**[Learn more, Memberships starting at \\$2.50/m!](#)**

**Follow me  
on Twitter!**

@ConvertingColor