

Converting Colors

CIELCh(82, 23.721, 58.851)

Have a look what the booklet for
CIELCh(82, 23.721, 58.851) contains.

CIELCh(82, 23.482, 58.992)	3
<i>Conversions</i>	4
<i>Details</i>	6
<i>Harmonies</i>	11
<i>Previews</i>	20
<i>Color Blindness Simulation</i>	23
<i>CSS Examples</i>	26

Color

CIELCh(82, 23.482, 58.992)

Conversions

Conversions Part 1

Format	Color
Hex	F0C3A7
RGB	240, 195, 167
RGB Percent	94%, 76%, 65%
CMY	0.0591, 0.2355, 0.3454
CMYK	0.00, 0.19, 0.30, 0.06
HSL	23°, 71%, 80%
HSV	23°, 30%, 94%
XYZ	62.3778, 60.2982, 44.8768
YIQ	205.2630, 35.8080, 0.8320

Conversions

Conversions Part 2

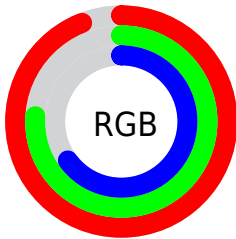
Format	Color
R_{YB}	240, 212, 167
Decimal	15778727
CIE _{Lab}	82.00, 12.10, 20.13
CIE _{LCh}	82, 23.482, 58.992
Yxy	60.2982, 0.3723, 0.3599
Android (android.graphics.Color)	4293968807 (0xFFFF0C3A7)
YUV	205.2630, -18.8637, 30.4643
Hunter-Lab	77.6519, 7.4982, 20.0913

Details

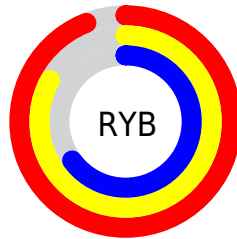
The CIELCh color **82, 23.482, 58.992** is a light color, and the websafe version is hex **FFCC99**. A complement of this color would be **83, 20.260, 246.023**, and the grayscale version is **83, 0.010, 296.813**.

A 20% lighter version of the original color is **98, 15.242, 104.878**, and **62, 23.500, 58.326** is the 20% darker color. If you saturate the color by 10%, you get **78, 32.284, 58.134**, and if you desaturate by 10%, it is **86, 15.239, 59.907**.

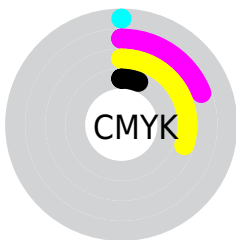
Distribution



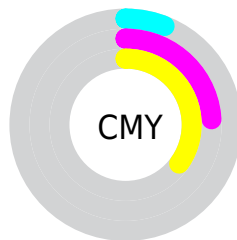
- Red (94%)
- Green (76%)
- Blue (65%)



- Red (94%)
- Yellow (83%)
- Blue (65%)



- Cyan (0%)
- Magenta (19%)
- Yellow (30%)
- Black (6%)



- Cyan (6%)
- Magenta (24%)
- Yellow (35%)


Brightness & Saturation Gradients

These gradients show how the CIELCh color 82, 23.482, 58.992 changes by changing the brightness by 10 percent. The first figure shows a shift by +10% for each color and the second figure -10%.

Similar to the brightness gradients but the following saturation gradients show a change of the CIELCh color 82, 23.482, 58.992 by changing the saturation by 10% instead.

 82, 23.482, 58.992

 82, 23.482, 58.992

 100, 23.482,
58.992

 72, 23.482, 58.992

 62, 23.482, 58.992

 52, 23.482, 58.992

 42, 23.482, 58.992

 32, 23.482, 58.992

 22, 23.482, 58.992

 12, 23.482, 58.992

 2, 23.482, 58.992

 0, 23.482, 58.992

82, 23.482, 58.992

82, 23.482, 58.992

78, 32.284, 58.134

86, 15.239, 59.907

74, 41.647, 57.321

90, 7.524, 60.825

70, 51.505, 56.552

95, 0.290, 60.067

67, 61.655, 55.777

99, 4.888, 204.695

64, 71.614, 54.854

99, 5.188, 199.204

61, 80.388, 53.464

58, 86.717, 51.445

Harmonies

Complementary

The Complementary color scheme is a pair of colors which are on the opposite of each other on the color wheel.



82, 23.482, 58.992



83, 20.260, 246.023

Rectangle

The Rectangle color scheme consists of four colors that form a rectangle on the color wheel.



82, 23.482, 58.992



82, 23.482, 108.992



82, 23.482, 238.992



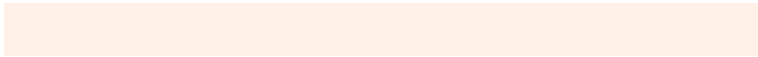
82, 23.482, 288.992

Sweetspot

The Sweet Spot groups the original color and five complimentary colors.



82, 23.482, 59.000



96, 6.794, 60.949



77, 35.604, 340.336



51, 4.744, 60.819



0, 0.000, 0.000



53, 0.007, 296.813

Same Dimension

The Same Dimension uses a secret algorithm to generate beautiful new colors.



82, 23.482, 59.000



84, 30.699, 58.414



91, 33.171, 101.673



48, 4.086, 60.909



45, 70.548, 52.096



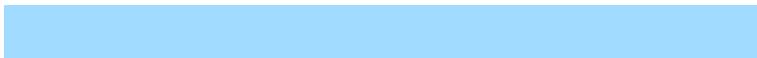
12, 23.930, 49.471

Inverse Universe

The Inverse Universe completely reimagines the original color for something new.



83, 20.260, 246.023



85, 25.506, 247.315



73, 35.044, 289.084



48, 3.925, 243.001



46, 44.537, 269.998



12, 17.574, 261.535

Previews

White Background



This preview shows how the CIELCh color 82, 23.482, 58.992 looks on a white background.

Color Contrast Check

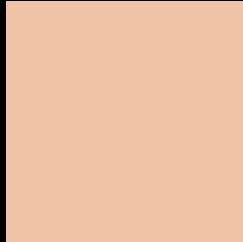
Large Text (above 18pt) WCAG AA × Fail

Any Text WCAG AA × Fail

Large Text (above 18pt) WCAG AAA × Fail

Any Text WCAG AAA × Fail

Black Background



This preview shows how the CIE LCh color 82, 23.482, 58.992 looks on a black background.

Color Contrast Check

Large Text (above 18pt) WCAG AA ✓ Pass

Any Text WCAG AA ✓ Pass

Large Text (above 18pt) WCAG AAA ✓ Pass

Any Text WCAG AAA ✓ Pass

If you want to check with other color combinations, try the [Color Contrast Checker](#).

CIELCh 82, 23.482, 58.992

Background



This preview shows how black text looks on a background with the CIELCh color 82, 23.482, 58.992.



This preview shows how white text looks on a background with the CIELCh color 82, 23.482, 58.992.

Color Blindness Simulation

Color vision deficiency is a very complex topic, and I could not describe the different causes any better than Wikipedia does, so if you want to learn more, you should check out their [article about color blindness](#).

Dichromacy



Original Color

82, 23.482, 58.992

Protanopia

82, 17.901, 94.765

Deuteranopia

82, 22.583, 62.486



Tritanopia
82, 21.455, 1.168

Trichromacy



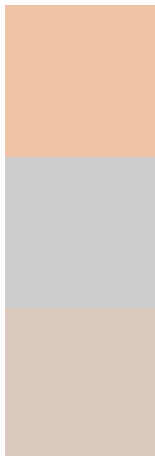
Original Color
82, 23.482, 58.992

Protanomaly
82, 18.738, 79.852

Deuteranomaly
82, 22.888, 61.810

Tritanomaly
82, 19.567, 22.468

Monochromacy



Original Color
82, 23.482, 58.992

Achromatopsia
82, 0.010, 296.813

Achromatomaly
82, 8.305, 59.081

CSS Examples

Text

The CSS property to change the color of the text to CIELCh 82, 23.482, 58.992 is called "color". The color property can be set on classes, ids or directly on the HTML element.

This example shows how text in the color `rgb(240, 195, 167)` looks like.

```
.text, #text, p{  
    color:rgb(240, 195, 167)  
}
```

If you want to add a text shadow in that color use the text-shadow property, you can generate a text shadow directly with our [CSS Text Shadow Generator](#).

Here you see how black text with a 4 pixel rgb(240, 195, 167) colored shadow looks like.

```
.shadow{ text-shadow: 4px 4px 2px rgb(240, 195, 167) }
```

Border

The CSS property to change the border of an element to CIELCh 82, 23.482, 58.992 is called "border". The border property can be set on classes, ids or directly on the HTML element.

This example shows the color as border, it can be applied via the CSS property "border" or "border-color".

```
.border, #border, table{ border:4px solid rgb(240, 195, 167) }
```

If only the border color should be changed use the property `border-color`.

```
.border{ border-color:rgb(240, 195, 167) }
```

If you want to add a box shadow in that color use:

Here you see how a box with a 4 pixel `rgb(240, 195, 167)` colored shadow looks like.

```
.boxshadow{ -moz-box-shadow:4px 4px 4px  
4px rgb(240, 195, 167); -webkit-box-  
shadow:4px 4px 4px 4px rgb(240, 195, 167);  
box-shadow:4px 4px 4px 4px rgb(240, 195,  
167) }
```

Background

The CSS property to change the background color of an element to CIELCh 82, 23.482, 58.992 is called "background". The background property can be set on classes, ids or directly on the HTML element.

```
.background, #background, body{  
background: rgb(240, 195, 167) }
```

If only the background color should be changed can be used:

```
.background{ background-color: rgb(240,  
195, 167) }
```

This example shows the color as background, it is applied via the CSS property "background".

To optimize and compress your CSS code, you can use our [online CSS compressor and optimizer](#) based on csstidy. If you want to create a linear or radial gradient as background or border, check our [CSS Gradient Generator](#).

Hey! You found this booklet interesting? Support Converting Colors with the new Membership Option!

The pro membership hides all ads, plus gives you double the colors in the color bucket, and more awesome pro features!

[Learn more, Memberships starting at \\$2.50/m!](#)

**Follow me
on Twitter!**

@ConvertingColor