

Converting Colors

CIELCh(82, 5.579, 49.904)

Have a look what the booklet for
CIELCh(82, 5.579, 49.904) contains.

CIELCh(82, 5.507, 48.248)	3
<i>Conversions</i>	4
<i>Details</i>	6
<i>Harmonies</i>	11
<i>Previews</i>	20
<i>Color Blindness Simulation</i>	23
<i>CSS Examples</i>	26

Color

CIELCh(82, 5.507, 48.248)

Conversions

Conversions Part 1

Format	Color
Hex	D6C9C4
RGB	214, 201, 196
RGB Percent	84%, 79%, 77%
CMY	0.1593, 0.2103, 0.2299
CMYK	0.00, 0.06, 0.08, 0.16
HSL	17°, 18%, 81%
HSV	17°, 8%, 84%
XYZ	58.8173, 60.2982, 60.9808
YIQ	204.3170, 9.3530, 1.2010

Conversions

Conversions Part 2

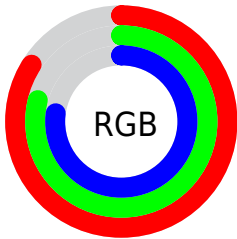
Format	Color
RYB	214, 203, 196
Decimal	14076356
CIELab	82.00, 3.67, 4.11
CIELCh	82, 5.507, 48.248
Yxy	60.2982, 0.3266, 0.3348
Android (android.graphics.Color)	4292266436 (0xFFD6C9C4)
YUV	204.3170, -4.1003, 8.4920
Hunter-Lab	77.6519, -0.6864, 7.7953

Details

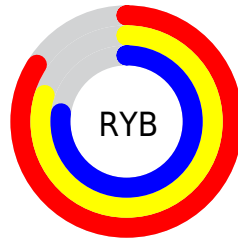
The CIELCh color **82, 5.507, 48.248** is a light color, and the websafe version is hex **CCCCCC**. A complement of this color would be **83, 5.256, 229.480**, and the grayscale version is **82, 0.010, 296.813**.

A 20% lighter version of the original color is **100, 1.003, 110.026**, and **62, 5.520, 50.102** is the 20% darker color. If you saturate the color by 10%, you get **78, 12.542, 47.829**, and if you desaturate by 10%, it is **86, 1.015, 229.468**.

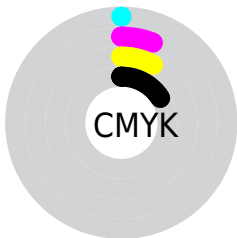
Distribution



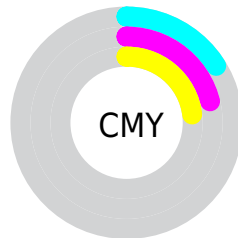
- Red (84%)
- Green (79%)
- Blue (77%)



- Red (84%)
- Yellow (80%)
- Blue (77%)



- Cyan (0%)
- Magenta (6%)
- Yellow (8%)
- Black (16%)



- Cyan (16%)
- Magenta (21%)
- Yellow (23%)

Brightness & Saturation Gradients

These gradients show how the CIELCh color 82, 5.507, 48.248 changes by changing the brightness by 10 percent. The first figure shows a shift by +10% for each color and the second figure -10%.

Similar to the brightness gradients but the following saturation gradients show a change of the CIELCh color 82, 5.507, 48.248 by changing the saturation by 10% instead.



82, 5.507, 48.248

82, 5.507, 48.248

78, 12.542, 47.829

86, 1.015, 229.468

73, 20.143, 47.430

91, 7.078, 229.613

69, 28.349, 47.131

95, 11.695,
217.264

65, 37.175, 46.961

97, 13.613,
198.597

61, 46.587, 46.934

58, 56.450, 47.032

54, 66.424, 47.155

52, 75.729, 47.019

49, 83.096, 46.185

Harmonies

Complementary

The Complementary color scheme is a pair of colors which are on the opposite of each other on the color wheel.



82, 5.507, 48.248



83, 5.256, 229.480

Rectangle

The Rectangle color scheme consists of four colors that form a rectangle on the color wheel.



82, 5.507, 48.248



82, 5.507, 98.248



82, 5.507, 228.248



82, 5.507, 278.248

Sweetspot

The Sweet Spot groups the original color and five complimentary colors.



82, 5.507, 48.274



98, 2.216, 48.388



81, 9.639, 333.490



52, 1.686, 48.402



0, 0.000, 0.000



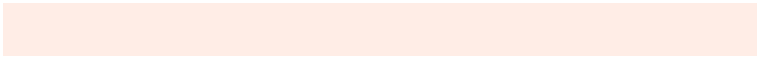
53, 0.007, 296.813

Same Dimension

The Same Dimension uses a secret algorithm to generate beautiful new colors.



82, 5.507, 48.274



95, 7.597, 48.201



84, 7.400, 97.328



43, 3.733, 48.230



39, 70.700, 46.597



7, 18.566, 36.044

Inverse Universe

The Inverse Universe completely reimagines the original color for something new.



83, 5.256, 229.480



96, 7.177, 229.589



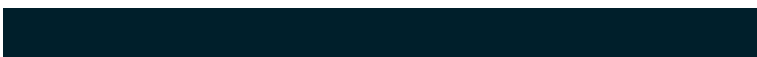
81, 7.463, 279.372



44, 3.541, 229.544



48, 35.025, 251.585



10, 12.985, 241.184

Previews

White Background



This preview shows how the CIELCh color 82, 5.507, 48.248 looks on a white background.

Color Contrast Check

Large Text (above 18pt) WCAG AA × Fail

Any Text WCAG AA × Fail

Large Text (above 18pt) WCAG AAA × Fail

Any Text WCAG AAA × Fail

Black Background



This preview shows how the CIELCh color 82, 5.507, 48.248 looks on a black background.

Color Contrast Check

Large Text (above 18pt) WCAG AA ✓ Pass

Any Text WCAG AA ✓ Pass

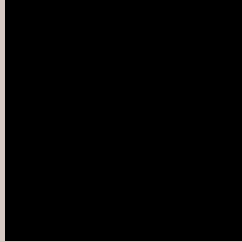
Large Text (above 18pt) WCAG AAA ✓ Pass

Any Text WCAG AAA ✓ Pass

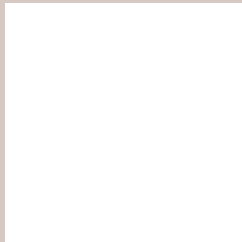
If you want to check with other color combinations, try the [Color Contrast Checker](#).

CIELCh 82, 5.507, 48.248

Background



This preview shows how black text looks on a background with the CIELCh color 82, 5.507, 48.248.



This preview shows how white text looks on a background with the CIELCh color 82, 5.507, 48.248.

Color Blindness Simulation

Color vision deficiency is a very complex topic, and I could not describe the different causes any better than Wikipedia does, so if you want to learn more, you should check out their [article about color blindness](#).

Dichromacy





Tritanopia
82, 10.322, 329.861

Trichromacy



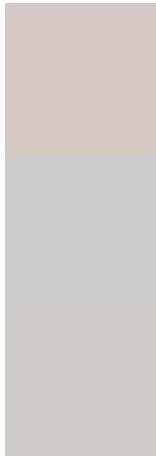
Original Color
82, 5.507, 48.248

Protanomaly
82, 4.241, 57.951

Deuteranomaly
82, 8.678, 26.961

Tritanomaly
82, 7.249, 344.205

Monochromacy



Original Color
82, 5.507, 48.248

Achromatopsia
82, 0.010, 296.813

Achromatomaly
82, 1.794, 55.190

CSS Examples

Text

The CSS property to change the color of the text to CIELCh 82, 5.507, 48.248 is called "color". The color property can be set on classes, ids or directly on the HTML element.

This example shows how text in the color `rgb(214, 201, 196)` looks like.

```
.text, #text, p{  
    color:rgb(214, 201, 196)  
}
```

If you want to add a text shadow in that color use the text-shadow property, you can generate a text shadow directly with our [CSS Text Shadow Generator](#).

Here you see how black text with a 4 pixel rgb(214, 201, 196) colored shadow looks like.

```
.shadow{ text-shadow: 4px 4px 2px rgb(214, 201, 196) }
```

Border

The CSS property to change the border of an element to CIELCh 82, 5.507, 48.248 is called "border". The border property can be set on classes, ids or directly on the HTML element.

This example shows the color as border, it can be applied via the CSS property "border" or "border-color".

```
.border, #border, table{ border:4px solid rgb(214, 201, 196) }
```

If only the border color should be changed use the property `border-color`.

```
.border{ border-color:rgb(214, 201, 196) }
```

If you want to add a box shadow in that color use:

Here you see how a box with a 4 pixel `rgb(214, 201, 196)` colored shadow looks like.

```
.boxshadow{ -moz-box-shadow:4px 4px 4px  
4px rgb(214, 201, 196); -webkit-box-  
shadow:4px 4px 4px 4px rgb(214, 201, 196);  
box-shadow:4px 4px 4px 4px rgb(214, 201,  
196) }
```

Background

The CSS property to change the background color of an element to CIELCh 82, 5.507, 48.248 is called "background". The background property can be set on classes, ids or directly on the HTML element.

```
.background, #background, body{  
background: rgb(214, 201, 196) }
```

If only the background color should be changed can be used:

```
.background{ background-color: rgb(214,  
201, 196) }
```

This example shows the color as background, it is applied via the CSS property "background".

To optimize and compress your CSS code, you can use our [online CSS compressor and optimizer](#) based on csstidy. If you want to create a linear or radial gradient as background or border, check our [CSS Gradient Generator](#).

Hey! You found this booklet interesting? Support Converting Colors with the new Membership Option!

The pro membership hides all ads, plus gives you double the colors in the color bucket, and more awesome pro features!

[Learn more, Memberships starting at \\$2.50/m!](#)

**Follow me
on Twitter!**

@ConvertingColor