

Converting Colors

CIELCh(82, 5.835, 19.400)

Have a look what the booklet for
CIELCh(82, 5.835, 19.400) contains.

CIELCh(82, 5.931, 19.769)	3
<i>Conversions</i>	4
<i>Details</i>	6
<i>Harmonies</i>	11
<i>Previews</i>	20
<i>Color Blindness Simulation</i>	23
<i>CSS Examples</i>	26

Color

CIELCh(82, 5.931, 19.769)

Conversions

Conversions Part 1

Format	Color
Hex	D8C8C8
RGB	216, 200, 200
RGB Percent	85%, 78%, 78%
CMY	0.1516, 0.2144, 0.2144
CMYK	0.00, 0.07, 0.07, 0.15
HSL	0°, 17%, 82%
HSV	0°, 7%, 85%
XYZ	59.6136, 60.2982, 63.3437
YIQ	204.7840, 9.5360, 3.3920

Conversions

Conversions Part 2

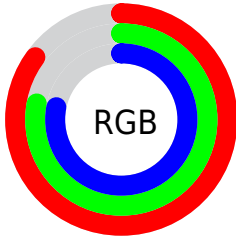
Format	Color
R _{YB}	216, 200, 200
Decimal	14207176
CIE Lab	82.00, 5.58, 2.01
CIE LCh	82, 5.931, 19.769
Yxy	60.2982, 0.3253, 0.3290
Android (android.graphics.Color)	4292397256 (0xFFD8C8C8)
YUV	204.7840, -2.3585, 9.8364
Hunter-Lab	77.6519, 1.1441, 5.9912

Details

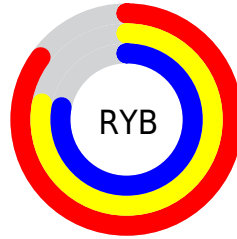
The CIELCh color **82, 5.931, 19.769** is a light color, and the websafe version is hex **CCCCCC**. A complement of this color would be **85, 5.661, 199.124**, and the grayscale version is **82, 0.010, 296.813**.

A 20% lighter version of the original color is **100, 0.012, 296.813**, and **62, 5.913, 19.906** is the 20% darker color. If you saturate the color by 10%, you get **76, 14.506, 20.613**, and if you desaturate by 10%, it is **88, 2.003, 199.583**.

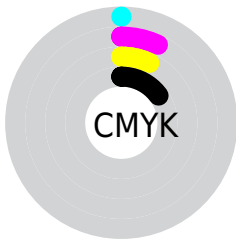
Distribution



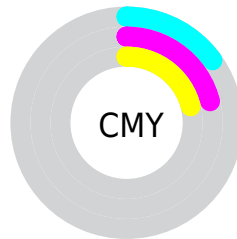
- Red (85%)
- Green (78%)
- Blue (78%)



- Red (85%)
- Yellow (78%)
- Blue (78%)



- Cyan (0%)
- Magenta (7%)
- Yellow (7%)
- Black (15%)



- Cyan (15%)
- Magenta (21%)
- Yellow (21%)

Brightness & Saturation Gradients

These gradients show how the CIELCh color 82, 5.931, 19.769 changes by changing the brightness by 10 percent. The first figure shows a shift by +10% for each color and the second figure -10%.

Similar to the brightness gradients but the following saturation gradients show a change of the CIELCh color 82, 5.931, 19.769 by changing the saturation by 10% instead.



82, 5.931, 19.769

82, 5.931, 19.769

76, 14.506, 20.613

88, 2.003, 199.583

70, 23.744, 21.624

94, 9.337, 198.885

65, 33.610, 22.932

97, 12.984,
198.639

60, 43.993, 24.641

55, 54.686, 26.863

51, 65.371, 29.685

48, 75.609, 33.070

46, 84.642, 36.627

45, 90.939, 39.363

Harmonies

Complementary

The Complementary color scheme is a pair of colors which are on the opposite of each other on the color wheel.



82, 5.931, 19.769



85, 5.661, 199.124

Rectangle

The Rectangle color scheme consists of four colors that form a rectangle on the color wheel.



82, 5.931, 19.769



82, 5.931, 69.769



82, 5.931, 199.769



82, 5.931, 249.769

Sweetspot

The Sweet Spot groups the original color and five complimentary colors.



82, 5.929, 19.788



99, 1.794, 19.179



82, 10.300, 324.820



53, 1.020, 19.153



0, 0.000, 0.000



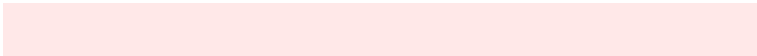
53, 0.007, 296.813

Same Dimension

The Same Dimension uses a secret algorithm to generate beautiful new colors.



82, 5.929, 19.788



94, 8.298, 19.923



84, 5.126, 74.446



42, 4.548, 19.949



35, 77.345, 39.902



5, 21.996, 19.779

Inverse Universe

The Inverse Universe completely reimagines the original color for something new.



85, 5.661, 199.124



98, 7.837, 199.016



83, 5.045, 256.441



44, 4.286, 198.995



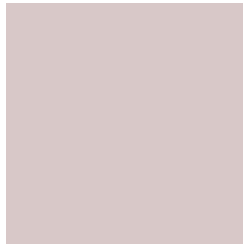
63, 37.109, 196.424



15, 14.554, 196.417

Previews

White Background



This preview shows how the CIELCh color 82, 5.931, 19.769 looks on a white background.

Color Contrast Check

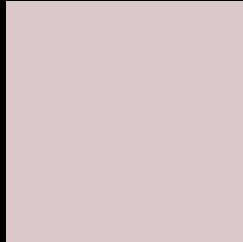
Large Text (above 18pt) WCAG AA × Fail

Any Text WCAG AA × Fail

Large Text (above 18pt) WCAG AAA × Fail

Any Text WCAG AAA × Fail

Black Background



This preview shows how the CIE LCh color 82, 5.931, 19.769 looks on a black background.

Color Contrast Check

Large Text (above 18pt) WCAG AA ✓ Pass

Any Text WCAG AA ✓ Pass

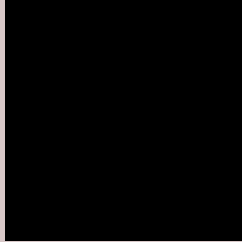
Large Text (above 18pt) WCAG AAA ✓ Pass

Any Text WCAG AAA ✓ Pass

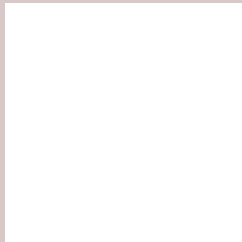
If you want to check with other color combinations, try the [Color Contrast Checker](#).

CIELCh 82, 5.931, 19.769

Background



This preview shows how black text looks on a background with the CIELCh color 82, 5.931, 19.769.

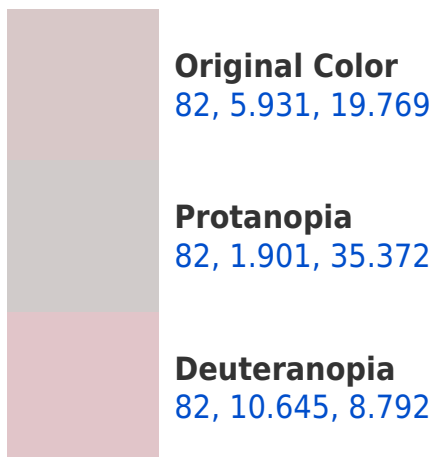


This preview shows how white text looks on a background with the CIELCh color 82, 5.931, 19.769.

Color Blindness Simulation

Color vision deficiency is a very complex topic, and I could not describe the different causes any better than Wikipedia does, so if you want to learn more, you should check out their [article about color blindness](#).

Dichromacy





Tritanopia
82, 11.198, 331.069

Trichromacy



Original Color
82, 5.931, 19.769

Protanomaly
82, 3.352, 28.547

Deuteranomaly
82, 9.066, 10.022

Tritanomaly
82, 8.473, 341.380

Monochromacy



Original Color
82, 5.931, 19.769

Achromatopsia
82, 0.010, 296.813

Achromatomaly
82, 2.199, 19.318

CSS Examples

Text

The CSS property to change the color of the text to CIELCh 82, 5.931, 19.769 is called "color". The color property can be set on classes, ids or directly on the HTML element.

This example shows how text in the color `rgb(216, 200, 200)` looks like.

```
.text, #text, p{  
    color:rgb(216, 200, 200)  
}
```

If you want to add a text shadow in that color use the text-shadow property, you can generate a text shadow directly with our [CSS Text Shadow Generator](#).

Here you see how black text with a 4 pixel rgb(216, 200, 200) colored shadow looks like.

```
.shadow{ text-shadow: 4px 4px 2px rgb(216, 200, 200) }
```

Border

The CSS property to change the border of an element to CIELCh 82, 5.931, 19.769 is called "border". The border property can be set on classes, ids or directly on the HTML element.

This example shows the color as border, it can be applied via the CSS property "border" or "border-color".

```
.border, #border, table{ border:4px solid rgb(216, 200, 200) }
```

If only the border color should be changed use the property border-color.

```
.border{ border-color:rgb(216, 200, 200) }
```

If you want to add a box shadow in that color use:

Here you see how a box with a 4 pixel rgb(216, 200, 200) colored shadow looks like.

```
.boxshadow{ -moz-box-shadow:4px 4px 4px  
4px rgb(216, 200, 200); -webkit-box-  
shadow:4px 4px 4px 4px rgb(216, 200, 200);  
box-shadow:4px 4px 4px 4px rgb(216, 200,  
200) }
```

Background

The CSS property to change the background color of an element to CIELCh 82, 5.931, 19.769 is called "background". The background property can be set on classes, ids or directly on the HTML element.

```
.background, #background, body{  
background: rgb(216, 200, 200) }
```

If only the background color should be changed can be used:

```
.background{ background-color: rgb(216,  
200, 200) }
```

This example shows the color as background, it is applied via the CSS property "background".

To optimize and compress your CSS code, you can use our [online CSS compressor and optimizer](#) based on csstidy. If you want to create a linear or radial gradient as background or border, check our [CSS Gradient Generator](#).

Hey! You found this booklet interesting? Support Converting Colors with the new Membership Option!

The pro membership hides all ads, plus gives you double the colors in the color bucket, and more awesome pro features!

[Learn more, Memberships starting at \\$2.50/m!](#)

**Follow me
on Twitter!**

@ConvertingColor