

Converting Colors

CIELCh(82, 7.619, 65.024)

Have a look what the booklet for
CIELCh(82, 7.619, 65.024) contains.

CIELCh(82, 7.728, 62.661)	3
<i>Conversions</i>	4
<i>Details</i>	6
<i>Harmonies</i>	11
<i>Previews</i>	20
<i>Color Blindness Simulation</i>	23
<i>CSS Examples</i>	26

Color

CIELCh(82, 7.728, 62.661)

Conversions

Conversions Part 1

Format	Color
Hex	D8C9BF
RGB	216, 201, 191
RGB Percent	85%, 79%, 75%
CMY	0.1520, 0.2108, 0.2500
CMYK	0.00, 0.07, 0.12, 0.15
HSL	24°, 24%, 80%
HSV	24°, 12%, 85%
XYZ	58.7684, 60.2982, 57.9729
YIQ	204.3450, 12.1500, 0.0700

Conversions

Conversions Part 2

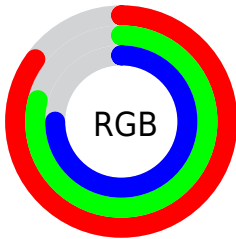
Format	Color
RYB	216, 208, 191
Decimal	14207423
CIELab	82.00, 3.55, 6.86
CIELCh	82, 7.728, 62.661
Yxy	60.2982, 0.3320, 0.3406
Android (android.graphics.Color)	4292397503 (0xFFD8C9BF)
YUV	204.3450, -6.5791, 10.2214
Hunter-Lab	77.6519, -0.7988, 10.0920

Details

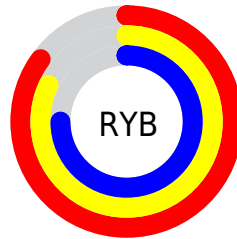
The CIELCh color $82, 7.728, 62.661$ is a light color, and the websafe version is hex `CCCCCC`. A complement of this color would be $82, 7.374, 245.292$, and the grayscale version is $82, 0.010, 296.813$.

A 20% lighter version of the original color is $100, 4.046, 109.857$, and $62, 7.552, 61.409$ is the 20% darker color. If you saturate the color by 10%, you get $78, 14.877, 61.706$, and if you desaturate by 10%, it is $86, 1.008, 63.291$.

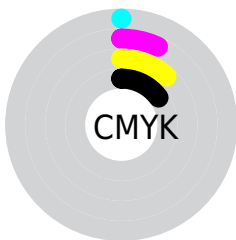
Distribution



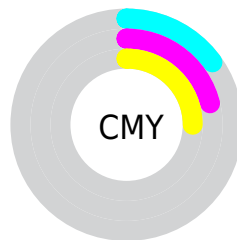
- Red (85%)
- Green (79%)
- Blue (75%)



- Red (85%)
- Yellow (82%)
- Blue (75%)



- Cyan (0%)
- Magenta (7%)
- Yellow (12%)
- Black (15%)



- Cyan (15%)
- Magenta (21%)
- Yellow (25%)

Brightness & Saturation Gradients

These gradients show how the CIELCh color 82, 7.728, 62.661 changes by changing the brightness by 10 percent. The first figure shows a shift by +10% for each color and the second figure -10%.

Similar to the brightness gradients but the following saturation gradients show a change of the CIELCh color 82, 7.728, 62.661 by changing the saturation by 10% instead.



82, 7.728, 62.661

82, 7.728, 62.661

78, 14.877, 61.706

86, 1.008, 63.291

75, 22.493, 60.741

90, 5.326, 244.863

71, 30.602, 59.809

94, 10.932,
243.584

67, 39.198, 58.918

97, 12.397,
203.104

64, 48.209, 58.055

61, 57.433, 57.165

97, 13.011,
198.637

58, 66.398, 56.099

55, 74.170, 54.534

53, 79.292, 52.739

Harmonies

Complementary

The Complementary color scheme is a pair of colors which are on the opposite of each other on the color wheel.



82, 7.728, 62.661



82, 7.374, 245.292

Rectangle

The Rectangle color scheme consists of four colors that form a rectangle on the color wheel.



82, 7.728, 62.661



82, 7.728, 112.661



82, 7.728, 242.661



82, 7.728, 292.661

Sweetspot

The Sweet Spot groups the original color and five complimentary colors.



82, 7.728, 62.680



99, 2.228, 63.369



80, 12.187, 339.482



52, 1.694, 63.337



0, 0.000, 0.000



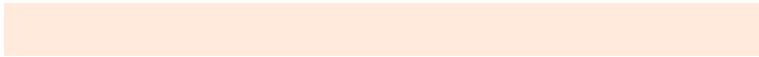
53, 0.007, 296.813

Same Dimension

The Same Dimension uses a secret algorithm to generate beautiful new colors.



82, 7.728, 62.680



94, 10.782, 62.432



85, 11.803, 104.589



43, 3.738, 62.883



42, 66.170, 53.375



8, 17.393, 47.671

Inverse Universe

The Inverse Universe completely reimagines the original color for something new.



82, 7.374, 245.292



94, 10.168, 245.615



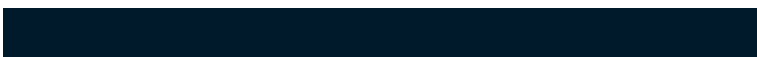
79, 12.052, 287.117



43, 3.602, 245.039



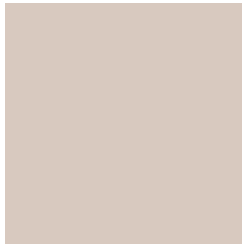
42, 43.458, 272.051



8, 14.836, 260.739

Previews

White Background



This preview shows how the CIELCh color 82, 7.728, 62.661 looks on a white background.

Color Contrast Check

Large Text (above 18pt) WCAG AA × Fail

Any Text WCAG AA × Fail

Large Text (above 18pt) WCAG AAA × Fail

Any Text WCAG AAA × Fail

Black Background



This preview shows how the CIELCh color 82, 7.728, 62.661 looks on a black background.

Color Contrast Check

Large Text (above 18pt) WCAG AA ✓ Pass

Any Text WCAG AA ✓ Pass

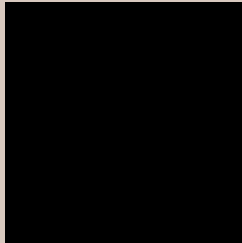
Large Text (above 18pt) WCAG AAA ✓ Pass

Any Text WCAG AAA ✓ Pass

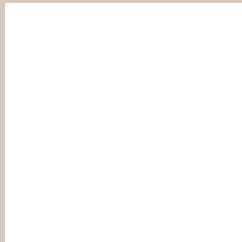
If you want to check with other color combinations, try the [Color Contrast Checker](#).

CIELCh 82, 7.728, 62.661

Background



This preview shows how black text looks on a background with the CIELCh color 82, 7.728, 62.661.

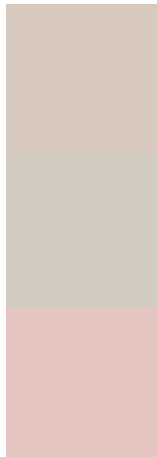


This preview shows how white text looks on a background with the CIELCh color 82, 7.728, 62.661.

Color Blindness Simulation

Color vision deficiency is a very complex topic, and I could not describe the different causes any better than Wikipedia does, so if you want to learn more, you should check out their [article about color blindness](#).

Dichromacy



Original Color

82, 7.728, 62.661

Protanopia

82, 6.355, 85.299

Deuteranopia

82, 12.071, 32.808



Tritanopia
82, 11.054, 334.330

Trichromacy



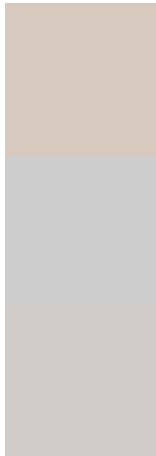
Original Color
82, 7.728, 62.661

Protanomaly
82, 6.461, 74.214

Deuteranomaly
82, 10.167, 41.249

Tritanomaly
82, 7.697, 355.633

Monochromacy



Original Color
82, 7.728, 62.661

Achromatopsia
82, 0.010, 296.813

Achromatomaly
82, 2.784, 68.538

CSS Examples

Text

The CSS property to change the color of the text to CIELCh 82, 7.728, 62.661 is called "color". The color property can be set on classes, ids or directly on the HTML element.

This example shows how text in the color `rgb(216, 201, 191)` looks like.

```
.text, #text, p{  
    color:rgb(216, 201, 191)  
}
```

If you want to add a text shadow in that color use the text-shadow property, you can generate a text shadow directly with our [CSS Text Shadow Generator](#).

Here you see how black text with a 4 pixel rgb(216, 201, 191) colored shadow looks like.

```
.shadow{ text-shadow: 4px 4px 2px rgb(216, 201, 191) }
```

Border

The CSS property to change the border of an element to CIELCh 82, 7.728, 62.661 is called "border". The border property can be set on classes, ids or directly on the HTML element.

This example shows the color as border, it can be applied via the CSS property "border" or "border-color".

```
.border, #border, table{ border:4px solid rgb(216, 201, 191) }
```

If only the border color should be changed use the property `border-color`.

```
.border{ border-color:rgb(216, 201, 191) }
```

If you want to add a box shadow in that color use:

Here you see how a box with a 4 pixel `rgb(216, 201, 191)` colored shadow looks like.

```
.boxshadow{ -moz-box-shadow:4px 4px 4px  
4px rgb(216, 201, 191); -webkit-box-  
shadow:4px 4px 4px 4px rgb(216, 201, 191);  
box-shadow:4px 4px 4px 4px rgb(216, 201,  
191) }
```

Background

The CSS property to change the background color of an element to CIELCh 82, 7.728, 62.661 is called "background". The background property can be set on classes, ids or directly on the HTML element.

```
.background, #background, body{  
background: rgb(216, 201, 191) }
```

If only the background color should be changed can be used:

```
.background{ background-color: rgb(216,  
201, 191) }
```

This example shows the color as background, it is applied via the CSS property "background".

To optimize and compress your CSS code, you can use our [online CSS compressor and optimizer](#) based on csstidy. If you want to create a linear or radial gradient as background or border, check our [CSS Gradient Generator](#).

Hey! You found this booklet interesting? Support Converting Colors with the new Membership Option!

The pro membership hides all ads, plus gives you double the colors in the color bucket, and more awesome pro features!

[Learn more, Memberships starting at \\$2.50/m!](#)

**Follow me
on Twitter!**

@ConvertingColor