

Converting Colors

CIELCh(82, 7.674, 68.799)

Have a look what the booklet for
CIELCh(82, 7.674, 68.799) contains.

CIELCh(82, 7.583, 69.430)	3
<i>Conversions</i>	4
<i>Details</i>	6
<i>Harmonies</i>	11
<i>Previews</i>	20
<i>Color Blindness Simulation</i>	23
<i>CSS Examples</i>	26

Color

CIELCh(82, 7.583, 69.430)

Conversions

Conversions Part 1

Format	Color
Hex	D7CABF
RGB	215, 202, 191
RGB Percent	84%, 79%, 75%
CMY	0.1578, 0.2087, 0.2519
CMYK	0.00, 0.06, 0.11, 0.16
HSL	28°, 23%, 80%
HSV	28°, 11%, 84%
XYZ	58.4029, 60.2982, 57.7214
YIQ	204.6330, 11.2790, -0.6650

Conversions

Conversions Part 2

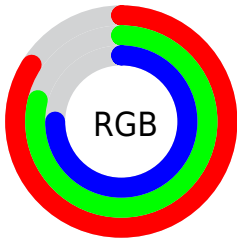
Format	Color
R _Y B	215, 211, 191
Decimal	14142143
CIE Lab	82.00, 2.66, 7.10
CIE LCh	82, 7.583, 69.430
Yxy	60.2982, 0.3310, 0.3418
Android (android.graphics.Color)	4292332223 (0xFFD7CABF)
YUV	204.6330, -6.7211, 9.0919
Hunter-Lab	77.6519, -1.6389, 10.2840

Details

The CIELCh color $82, 7.583, 69.430$ is a light color, and the websafe version is hex `CCCCCC`. A complement of this color would be $81, 7.326, 252.263$, and the grayscale version is $82, 0.010, 296.813$.

A 20% lighter version of the original color is $100, 4.046, 109.857$, and $62, 7.377, 68.747$ is the 20% darker color. If you saturate the color by 10%, you get $79, 14.766, 68.310$, and if you desaturate by 10%, it is $85, 0.769, 70.112$.

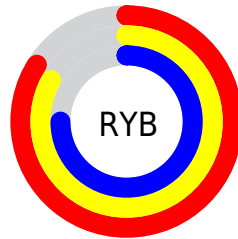
Distribution



Red (84%)

Green (79%)

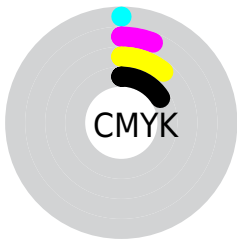
Blue (75%)



Red (84%)

Yellow (83%)

Blue (75%)

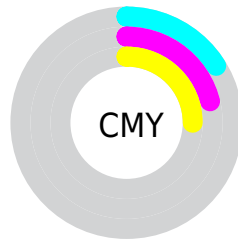


Cyan (0%)

Magenta (6%)

Yellow (11%)

Black (16%)



Cyan (16%)

Magenta (21%)

Yellow (25%)

Brightness & Saturation Gradients

These gradients show how the CIELCh color 82, 7.583, 69.430 changes by changing the brightness by 10 percent. The first figure shows a shift by +10% for each color and the second figure -10%.

Similar to the brightness gradients but the following saturation gradients show a change of the CIELCh color 82, 7.583, 69.430 by changing the saturation by 10% instead.

 82, 7.583, 69.430

 82, 7.583, 69.430

 100, 7.583, 69.430

 72, 7.583, 69.430

 62, 7.583, 69.430

 52, 7.583, 69.430

 42, 7.583, 69.430

 32, 7.583, 69.430

 22, 7.583, 69.430

 12, 7.583, 69.430

 2, 7.583, 69.430

 0, 7.583, 69.430

82, 7.583, 69.430

82, 7.583, 69.430

79, 14.766, 68.310

85, 0.769, 70.112

75, 22.347, 67.153

89, 5.714, 251.874

72, 30.340, 66.000

93, 11.817,
252.610

69, 38.727, 64.851

96, 11.660,
216.003

66, 47.423, 63.692

63, 56.210, 62.465

97, 13.486,
198.606

60, 64.609, 61.031

57, 71.733, 59.104

55, 76.487, 56.896

Harmonies

Complementary

The Complementary color scheme is a pair of colors which are on the opposite of each other on the color wheel.



82, 7.583, 69.430



81, 7.326, 252.263

Rectangle

The Rectangle color scheme consists of four colors that form a rectangle on the color wheel.



82, 7.583, 69.430



82, 7.583, 119.430



82, 7.583, 249.430



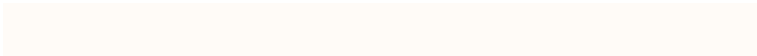
82, 7.583, 299.430

Sweetspot

The Sweet Spot groups the original color and five complimentary colors.



82, 7.583, 69.449



99, 2.287, 70.237



80, 11.306, 341.912



52, 1.738, 70.189



0, 0.000, 0.000



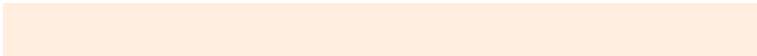
53, 0.007, 296.813

Same Dimension

The Same Dimension uses a secret algorithm to generate beautiful new colors.



82, 7.583, 69.449



95, 10.198, 69.230



85, 11.930, 106.980



43, 3.826, 69.642



44, 64.232, 57.540



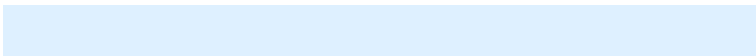
9, 17.096, 54.328

Inverse Universe

The Inverse Universe completely reimagines the original color for something new.



81, 7.326, 252.263



94, 9.782, 252.532



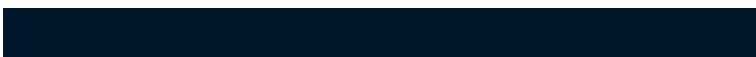
78, 12.210, 289.320



43, 3.720, 252.033



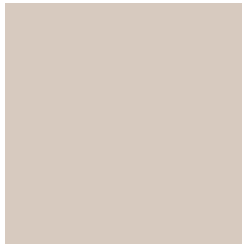
39, 48.919, 279.386



7, 16.175, 268.500

Previews

White Background



This preview shows how the CIELCh color 82, 7.583, 69.430 looks on a white background.

Color Contrast Check

Large Text (above 18pt) WCAG AA × Fail

Any Text WCAG AA × Fail

Large Text (above 18pt) WCAG AAA × Fail

Any Text WCAG AAA × Fail

Black Background



This preview shows how the CIELCh color 82, 7.583, 69.430 looks on a black background.

Color Contrast Check

Large Text (above 18pt) WCAG AA ✓ Pass

Any Text WCAG AA ✓ Pass

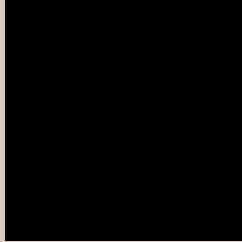
Large Text (above 18pt) WCAG AAA ✓ Pass

Any Text WCAG AAA ✓ Pass

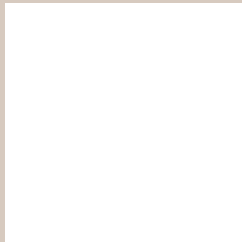
If you want to check with other color combinations, try the [Color Contrast Checker](#).

CIELCh 82, 7.583, 69.430

Background



This preview shows how black text looks on a background with the CIELCh color 82, 7.583, 69.430.

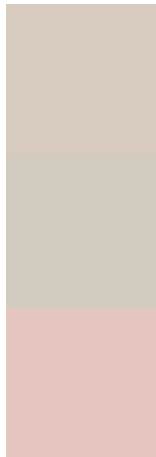


This preview shows how white text looks on a background with the CIELCh color 82, 7.583, 69.430.

Color Blindness Simulation

Color vision deficiency is a very complex topic, and I could not describe the different causes any better than Wikipedia does, so if you want to learn more, you should check out their [article about color blindness](#).

Dichromacy



Original Color

82, 7.583, 69.430

Protanopia

82, 6.355, 85.299

Deuteranopia

82, 12.071, 32.808



Tritanopia
82, 11.198, 331.069

Trichromacy



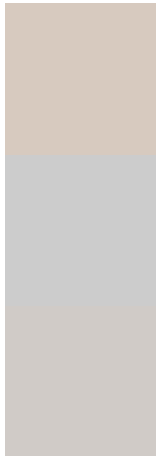
Original Color
82, 7.583, 69.430

Protanomaly
82, 6.699, 79.398

Deuteranomaly
82, 9.808, 42.045

Tritanomaly
82, 7.598, 350.796

Monochromacy



Original Color
82, 7.583, 69.430

Achromatopsia
82, 0.010, 296.813

Achromatomaly
82, 2.787, 68.537

CSS Examples

Text

The CSS property to change the color of the text to CIELCh 82, 7.583, 69.430 is called "color". The color property can be set on classes, ids or directly on the HTML element.

This example shows how text in the color `rgb(215, 202, 191)` looks like.

```
.text, #text, p{  
    color:rgb(215, 202, 191)  
}
```

If you want to add a text shadow in that color use the text-shadow property, you can generate a text shadow directly with our [CSS Text Shadow Generator](#).

Here you see how black text with a 4 pixel rgb(215, 202, 191) colored shadow looks like.

```
.shadow{ text-shadow: 4px 4px 2px rgb(215, 202, 191) }
```

Border

The CSS property to change the border of an element to CIELCh 82, 7.583, 69.430 is called "border". The border property can be set on classes, ids or directly on the HTML element.

This example shows the color as border, it can be applied via the CSS property "border" or "border-color".

```
.border, #border, table{ border:4px solid rgb(215, 202, 191) }
```

If only the border color should be changed use the property `border-color`.

```
.border{ border-color:rgb(215, 202, 191) }
```

If you want to add a box shadow in that color use:

Here you see how a box with a 4 pixel `rgb(215, 202, 191)` colored shadow looks like.

```
.boxshadow{ -moz-box-shadow:4px 4px 4px  
4px rgb(215, 202, 191); -webkit-box-  
shadow:4px 4px 4px 4px rgb(215, 202, 191);  
box-shadow:4px 4px 4px 4px rgb(215, 202,  
191) }
```

Background

The CSS property to change the background color of an element to CIELCh 82, 7.583, 69.430 is called "background". The background property can be set on classes, ids or directly on the HTML element.

```
.background, #background, body{  
background: rgb(215, 202, 191) }
```

If only the background color should be changed can be used:

```
.background{ background-color: rgb(215,  
202, 191) }
```

This example shows the color as background, it is applied via the CSS property "background".

To optimize and compress your CSS code, you can use our [online CSS compressor and optimizer](#) based on csstidy. If you want to create a linear or radial gradient as background or border, check our [CSS Gradient Generator](#).

Hey! You found this booklet interesting? Support Converting Colors with the new Membership Option!

The pro membership hides all ads, plus gives you double the colors in the color bucket, and more awesome pro features!

[Learn more, Memberships starting at \\$2.50/m!](#)

**Follow me
on Twitter!**

@ConvertingColor