

Converting Colors

CIELCh(82, 8.403, 53.907)

Have a look what the booklet for
CIELCh(82, 8.403, 53.907) contains.

CIELCh(82, 8.608, 53.219)	3
<i>Conversions</i>	4
<i>Details</i>	6
<i>Harmonies</i>	11
<i>Previews</i>	20
<i>Color Blindness Simulation</i>	23
<i>CSS Examples</i>	26

Color

CIELCh(82, 8.608, 53.219)

Conversions

Conversions Part 1

Format	Color
Hex	DBC8BF
RGB	219, 200, 191
RGB Percent	86%, 78%, 75%
CMY	0.1402, 0.2147, 0.2500
CMYK	0.00, 0.09, 0.13, 0.14
HSL	19°, 28%, 80%
HSV	19°, 13%, 86%
XYZ	59.4352, 60.2982, 57.9411
YIQ	204.6550, 14.2130, 1.2290

Conversions

Conversions Part 2

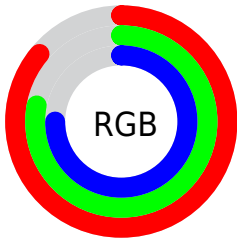
Format	Color
R _Y B	219, 204, 191
Decimal	14403775
CIE Lab	82.00, 5.15, 6.89
CIE LCh	82, 8.608, 53.219
Yxy	60.2982, 0.3345, 0.3394
Android (android.graphics.Color)	4292593855 (0xFFDBC8BF)
YUV	204.6550, -6.7319, 12.5806
Hunter-Lab	77.6519, 0.7340, 10.1162

Details

The CIELCh color **82, 8.608, 53.219** is a light color, and the websafe version is hex **CCCCCC**. A complement of this color would be **83, 8.049, 235.420**, and the grayscale version is **82, 0.010, 296.813**.

A 20% lighter version of the original color is **100, 4.046, 109.857**, and **62, 8.537, 51.423** is the 20% darker color. If you saturate the color by 10%, you get **78, 15.928, 52.585**, and if you desaturate by 10%, it is **86, 1.799, 53.734**.

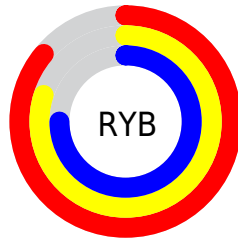
Distribution



Red (86%)

Green (78%)

Blue (75%)



Red (86%)

Yellow (80%)

Blue (75%)

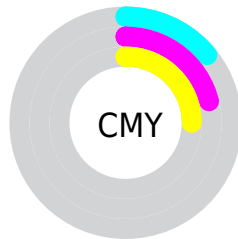


Cyan (0%)

Magenta (9%)

Yellow (13%)

Black (14%)



Cyan (14%)

Magenta (21%)

Yellow (25%)

Brightness & Saturation Gradients

These gradients show how the CIELCh color 82, 8.608, 53.219 changes by changing the brightness by 10 percent. The first figure shows a shift by +10% for each color and the second figure -10%.

Similar to the brightness gradients but the following saturation gradients show a change of the CIELCh color 82, 8.608, 53.219 by changing the saturation by 10% instead.

 82, 8.608, 53.219

 82, 8.608, 53.219

 100, 8.608, 53.219

 72, 8.608, 53.219

 62, 8.608, 53.219

 52, 8.608, 53.219

 42, 8.608, 53.219

 32, 8.608, 53.219

 22, 8.608, 53.219

 12, 8.608, 53.219

 2, 8.608, 53.219

 0, 8.608, 53.219

82, 8.608, 53.219

82, 8.608, 53.219

78, 15.928, 52.585

86, 1.799, 53.734

74, 23.808, 51.986

91, 4.549, 234.908

70, 32.278, 51.472

95, 9.959, 230.542

66, 41.336, 51.058

98, 12.043,
198.701

62, 50.911, 50.740

59, 60.792, 50.462

56, 70.468, 50.059

53, 78.871, 49.137

51, 83.727, 48.114

Harmonies

Complementary

The Complementary color scheme is a pair of colors which are on the opposite of each other on the color wheel.



82, 8.608, 53.219



83, 8.049, 235.420

Rectangle

The Rectangle color scheme consists of four colors that form a rectangle on the color wheel.



82, 8.608, 53.219



82, 8.608, 103.219



82, 8.608, 233.219



82, 8.608, 283.219

Sweetspot

The Sweet Spot groups the original color and five complimentary colors.



82, 8.608, 53.236



98, 2.949, 53.733



80, 14.451, 335.839



52, 2.102, 53.709



0, 0.000, 0.000



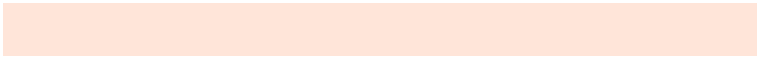
53, 0.007, 296.813

Same Dimension

The Same Dimension uses a secret algorithm to generate beautiful new colors.



82, 8.608, 53.236



93, 11.526, 53.081



86, 12.102, 99.938



44, 3.780, 53.453



41, 69.868, 48.667



8, 19.437, 40.689

Inverse Universe

The Inverse Universe completely reimagines the original color for something new.



83, 8.049, 235.420



94, 10.631, 235.655



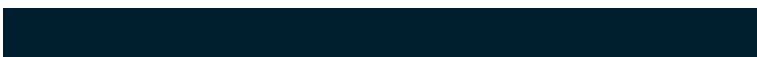
80, 12.298, 282.949



44, 3.602, 235.117



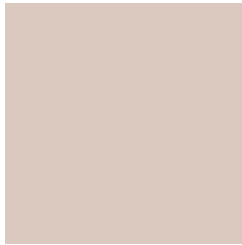
47, 37.910, 259.769



10, 14.009, 249.312

Previews

White Background



This preview shows how the CIELCh color 82, 8.608, 53.219 looks on a white background.

Color Contrast Check

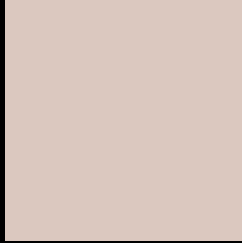
Large Text (above 18pt) WCAG AA × Fail

Any Text WCAG AA × Fail

Large Text (above 18pt) WCAG AAA × Fail

Any Text WCAG AAA × Fail

Black Background



This preview shows how the CIELCh color 82, 8.608, 53.219 looks on a black background.

Color Contrast Check

Large Text (above 18pt) WCAG AA ✓ Pass

Any Text WCAG AA ✓ Pass

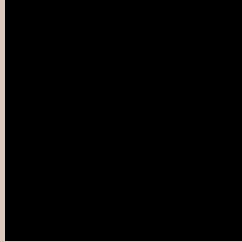
Large Text (above 18pt) WCAG AAA ✓ Pass

Any Text WCAG AAA ✓ Pass

If you want to check with other color combinations, try the [Color Contrast Checker](#).

CIELCh 82, 8.608, 53.219

Background



This preview shows how black text looks on a background with the CIELCh color 82, 8.608, 53.219.

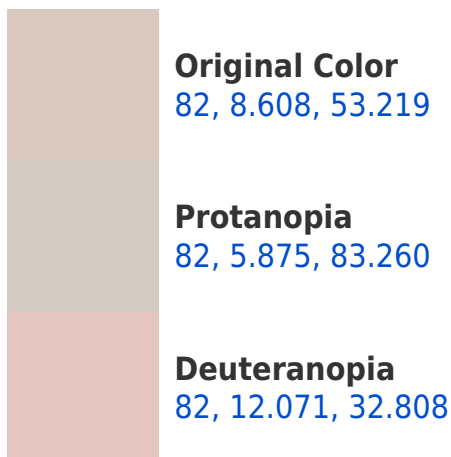


This preview shows how white text looks on a background with the CIELCh color 82, 8.608, 53.219.

Color Blindness Simulation

Color vision deficiency is a very complex topic, and I could not describe the different causes any better than Wikipedia does, so if you want to learn more, you should check out their [article about color blindness](#).

Dichromacy





Tritanopia
82, 12.121, 339.459

Trichromacy



Original Color
82, 8.608, 53.219

Protanomaly
82, 6.688, 71.569

Deuteranomaly
82, 10.716, 37.223

Tritanomaly
82, 9.083, 359.673

Monochromacy



Original Color
82, 8.608, 53.219

Achromatopsia
82, 0.010, 296.813

Achromatomaly
82, 3.014, 51.072

CSS Examples

Text

The CSS property to change the color of the text to CIELCh 82, 8.608, 53.219 is called "color". The color property can be set on classes, ids or directly on the HTML element.

This example shows how text in the color `rgb(219, 200, 191)` looks like.

```
.text, #text, p{  
    color:rgb(219, 200, 191)  
}
```

If you want to add a text shadow in that color use the text-shadow property, you can generate a text shadow directly with our [CSS Text Shadow Generator](#).

Here you see how black text with a 4 pixel rgb(219, 200, 191) colored shadow looks like.

```
.shadow{ text-shadow: 4px 4px 2px rgb(219, 200, 191) }
```

Border

The CSS property to change the border of an element to CIELCh 82, 8.608, 53.219 is called "border". The border property can be set on classes, ids or directly on the HTML element.

This example shows the color as border, it can be applied via the CSS property "border" or "border-color".

```
.border, #border, table{ border:4px solid rgb(219, 200, 191) }
```

If only the border color should be changed use the property `border-color`.

```
.border{ border-color:rgb(219, 200, 191) }
```

If you want to add a box shadow in that color use:

Here you see how a box with a 4 pixel `rgb(219, 200, 191)` colored shadow looks like.

```
.boxshadow{ -moz-box-shadow:4px 4px 4px  
4px rgb(219, 200, 191); -webkit-box-  
shadow:4px 4px 4px 4px rgb(219, 200, 191);  
box-shadow:4px 4px 4px 4px rgb(219, 200,  
191) }
```

Background

The CSS property to change the background color of an element to CIELCh 82, 8.608, 53.219 is called "background". The background property can be set on classes, ids or directly on the HTML element.

```
.background, #background, body{  
background: rgb(219, 200, 191) }
```

If only the background color should be changed can be used:

```
.background{ background-color: rgb(219,  
200, 191) }
```

This example shows the color as background, it is applied via the CSS property "background".

To optimize and compress your CSS code, you can use our [online CSS compressor and optimizer](#) based on csstidy. If you want to create a linear or radial gradient as background or border, check our [CSS Gradient Generator](#).

Hey! You found this booklet interesting? Support Converting Colors with the new Membership Option!

The pro membership hides all ads, plus gives you double the colors in the color bucket, and more awesome pro features!

[Learn more, Memberships starting at \\$2.50/m!](#)

**Follow me
on Twitter!**

@ConvertingColor