

Converting Colors

CIELCh(82, 9.252, 50.633)

Have a look what the booklet for
CIELCh(82, 9.252, 50.633) contains.

CIELCh(82, 9.261, 50.630)	3
<i>Conversions</i>	4
<i>Details</i>	6
<i>Harmonies</i>	11
<i>Previews</i>	20
<i>Color Blindness Simulation</i>	23
<i>CSS Examples</i>	26

Color

CIELCh(82, 9.261, 50.630)

Conversions

Conversions Part 1

Format	Color
Hex	DDC8BF
RGB	221, 200, 191
RGB Percent	87%, 78%, 75%
CMY	0.1342, 0.2165, 0.2518
CMYK	0.00, 0.10, 0.14, 0.13
HSL	18°, 30%, 81%
HSV	18°, 14%, 87%
XYZ	59.7361, 60.2982, 57.6574
YIQ	205.2530, 15.4050, 1.6530

Conversions

Conversions Part 2

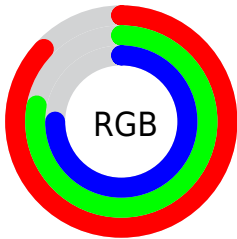
Format	Color
R _Y B	221, 204, 191
Decimal	14534847
CIE Lab	82.00, 5.87, 7.16
CIE LCh	82, 9.261, 50.630
Yxy	60.2982, 0.3362, 0.3393
Android (android.graphics.Color)	4292724927 (0xFFDDC8BF)
YUV	205.2530, -7.0267, 13.8101
Hunter-Lab	77.6519, 1.4258, 10.3328

Details

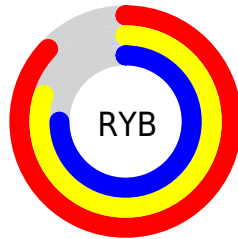
The CIELCh color $82, 9.261, 50.630$ is a light color, and the websafe version is hex `CCCCCC`. A complement of this color would be $84, 8.588, 232.717$, and the grayscale version is $82, 0.010, 296.813$.

A 20% lighter version of the original color is $100, 4.046, 109.857$, and $62, 9.251, 48.804$ is the 20% darker color. If you saturate the color by 10%, you get $78, 16.707, 50.101$, and if you desaturate by 10%, it is $86, 2.351, 51.108$.

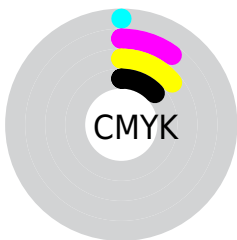
Distribution



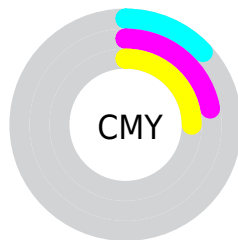
- Red (87%)
- Green (78%)
- Blue (75%)



- Red (87%)
- Yellow (80%)
- Blue (75%)



- Cyan (0%)
- Magenta (10%)
- Yellow (14%)
- Black (13%)



- Cyan (13%)
- Magenta (22%)
- Yellow (25%)

Brightness & Saturation Gradients

These gradients show how the CIELCh color 82, 9.261, 50.630 changes by changing the brightness by 10 percent. The first figure shows a shift by +10% for each color and the second figure -10%.

Similar to the brightness gradients but the following saturation gradients show a change of the CIELCh color 82, 9.261, 50.630 by changing the saturation by 10% instead.



82, 9.261, 50.630

82, 9.261, 50.630

78, 16.707, 50.101

86, 2.351, 51.108

73, 24.739, 49.624

91, 4.074, 232.150

69, 33.387, 49.249

95, 9.588, 227.366

65, 42.644, 48.993

98, 11.550,
198.734

62, 52.430, 48.852

58, 62.518, 48.771

55, 72.357, 48.567

52, 80.794, 47.809

51, 85.159, 47.048

Harmonies

Complementary

The Complementary color scheme is a pair of colors which are on the opposite of each other on the color wheel.



82, 9.261, 50.630



84, 8.588, 232.717

Rectangle

The Rectangle color scheme consists of four colors that form a rectangle on the color wheel.



82, 9.261, 50.630



82, 9.261, 100.630



82, 9.261, 230.630



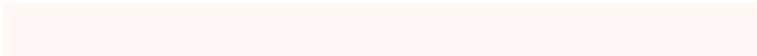
82, 9.261, 280.630

Sweetspot

The Sweet Spot groups the original color and five complimentary colors.



82, 9.261, 50.646



98, 2.955, 51.104



80, 15.648, 335.203



52, 2.106, 51.088



0, 0.000, 0.000



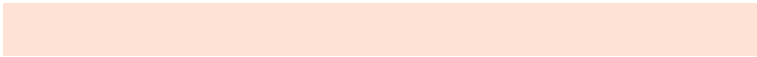
53, 0.007, 296.813

Same Dimension

The Same Dimension uses a secret algorithm to generate beautiful new colors.



82, 9.261, 50.646



92, 12.379, 50.504



86, 12.727, 98.839



44, 3.789, 50.876



40, 70.681, 47.589



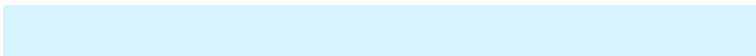
8, 19.689, 38.746

Inverse Universe

The Inverse Universe completely reimagines the original color for something new.



84, 8.588, 232.717



94, 11.303, 232.952



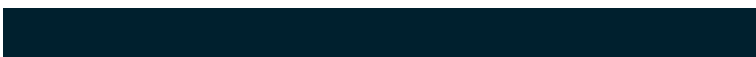
80, 12.922, 282.097



44, 3.602, 232.374



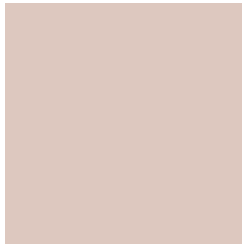
48, 36.601, 255.884



11, 13.721, 245.694

Previews

White Background



This preview shows how the CIELCh color 82, 9.261, 50.630 looks on a white background.

Color Contrast Check

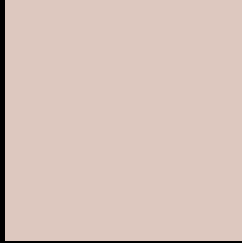
Large Text (above 18pt) WCAG AA × Fail

Any Text WCAG AA × Fail

Large Text (above 18pt) WCAG AAA × Fail

Any Text WCAG AAA × Fail

Black Background



This preview shows how the CIELCh color 82, 9.261, 50.630 looks on a black background.

Color Contrast Check

Large Text (above 18pt) WCAG AA ✓ Pass

Any Text WCAG AA ✓ Pass

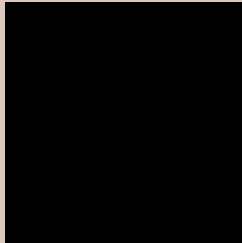
Large Text (above 18pt) WCAG AAA ✓ Pass

Any Text WCAG AAA ✓ Pass

If you want to check with other color combinations, try the [Color Contrast Checker](#).

CIELCh 82, 9.261, 50.630

Background



This preview shows how black text looks on a background with the CIELCh color 82, 9.261, 50.630.

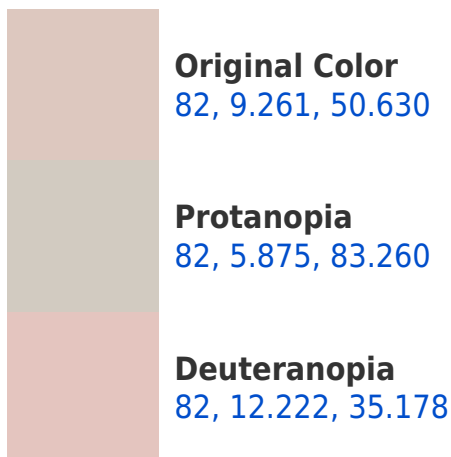


This preview shows how white text looks on a background with the CIELCh color 82, 9.261, 50.630.

Color Blindness Simulation

Color vision deficiency is a very complex topic, and I could not describe the different causes any better than Wikipedia does, so if you want to learn more, you should check out their [article about color blindness](#).

Dichromacy





Tritanopia
82, 12.683, 341.709

Trichromacy



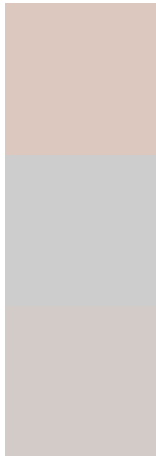
Original Color
82, 9.261, 50.630

Protanomaly
82, 6.928, 69.101

Deuteranomaly
82, 10.905, 39.820

Tritanomaly
82, 9.788, 1.280

Monochromacy



Original Color
82, 9.261, 50.630

Achromatopsia
82, 0.010, 296.813

Achromatomaly
82, 3.336, 47.750

CSS Examples

Text

The CSS property to change the color of the text to CIELCh 82, 9.261, 50.630 is called "color". The color property can be set on classes, ids or directly on the HTML element.

This example shows how text in the color `rgb(221, 200, 191)` looks like.

```
.text, #text, p{  
    color:rgb(221, 200, 191)  
}
```

If you want to add a text shadow in that color use the text-shadow property, you can generate a text shadow directly with our [CSS Text Shadow Generator](#).

Here you see how black text with a 4 pixel rgb(221, 200, 191) colored shadow looks like.

```
.shadow{ text-shadow: 4px 4px 2px rgb(221, 200, 191) }
```

Border

The CSS property to change the border of an element to CIELCh 82, 9.261, 50.630 is called "border". The border property can be set on classes, ids or directly on the HTML element.

This example shows the color as border, it can be applied via the CSS property "border" or "border-color".

```
.border, #border, table{ border:4px solid rgb(221, 200, 191) }
```

If only the border color should be changed use the property `border-color`.

```
.border{ border-color:rgb(221, 200, 191) }
```

If you want to add a box shadow in that color use:

Here you see how a box with a 4 pixel `rgb(221, 200, 191)` colored shadow looks like.

```
.boxshadow{ -moz-box-shadow:4px 4px 4px  
4px rgb(221, 200, 191); -webkit-box-  
shadow:4px 4px 4px 4px rgb(221, 200, 191);  
box-shadow:4px 4px 4px 4px rgb(221, 200,  
191) }
```

Background

The CSS property to change the background color of an element to CIELCh 82, 9.261, 50.630 is called "background". The background property can be set on classes, ids or directly on the HTML element.

```
.background, #background, body{  
background: rgb(221, 200, 191) }
```

If only the background color should be changed can be used:

```
.background{ background-color: rgb(221,  
200, 191) }
```

This example shows the color as background, it is applied via the CSS property "background".

To optimize and compress your CSS code, you can use our [online CSS compressor and optimizer](#) based on csstidy. If you want to create a linear or radial gradient as background or border, check our [CSS Gradient Generator](#).

Hey! You found this booklet interesting? Support Converting Colors with the new Membership Option!

The pro membership hides all ads, plus gives you double the colors in the color bucket, and more awesome pro features!

[Learn more, Memberships starting at \\$2.50/m!](#)

**Follow me
on Twitter!**

@ConvertingColor