

# Converting Colors

CIELCh(83, 10.074, 21.288)

Have a look what the booklet for  
CIELCh(83, 10.074, 21.288) contains.

<b>CIELCh(83, 10.117, 23.092)</b> .....	3
<i><b>Conversions</b></i> .....	4
<i><b>Details</b></i> .....	6
<i><b>Harmonies</b></i> .....	11
<i><b>Previews</b></i> .....	20
<i><b>Color Blindness Simulation</b></i> .....	23
<i><b>CSS Examples</b></i> .....	26

# Color

**CIELCh(83, 10.117, 23.092)**

# Conversions

## Conversions Part 1

Format	Color
Hex	E4C9C8
RGB	228, 201, 200
RGB Percent	89%, 79%, 78%
CMY	0.1075, 0.2133, 0.2173
CMYK	0.00, 0.12, 0.12, 0.11
HSL	2°, 34%, 84%
HSV	2°, 12%, 89%
XYZ	63.0346, 62.1629, 63.0734
YIQ	208.9590, 16.4130, 5.4130

# Conversions

## Conversions Part 2

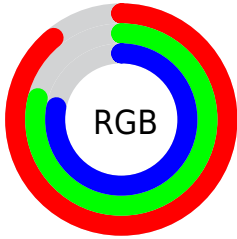
Format	Color
R <sub>Y</sub> B	228, 201, 200
Decimal	14993864
CIE Lab	83.00, 9.31, 3.97
CIE LCh	83, 10.117, 23.092
Yxy	62.1629, 0.3348, 0.3302
Android (android.graphics.Color)	4293183944 (0xFFE4C9C8)
YUV	208.9590, -4.4168, 16.6990
Hunter-Lab	78.8435, 4.7329, 7.7595

# Details

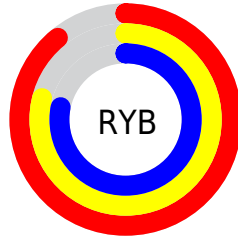
The CIELCh color **83, 10.117, 23.092** is a light color, and the websafe version is hex **FFCCCC**. A complement of this color would be **88, 9.339, 202.055**, and the grayscale version is **84, 0.010, 296.813**.

A 20% lighter version of the original color is **100, 0.012, 296.813**, and **63, 9.979, 23.502** is the 20% darker color. If you saturate the color by 10%, you get **77, 19.096, 23.865**, and if you desaturate by 10%, it is **89, 1.816, 22.277**.

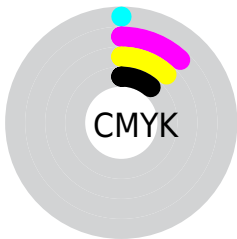
# Distribution



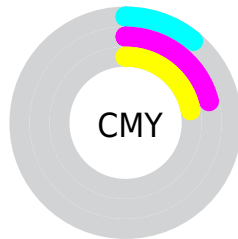
- Red (89%)
- Green (79%)
- Blue (78%)



- Red (89%)
- Yellow (79%)
- Blue (78%)



- Cyan (0%)
- Magenta (12%)
- Yellow (12%)
- Black (11%)



- Cyan (11%)
- Magenta (21%)
- Yellow (22%)

# Brightness & Saturation Gradients


These gradients show how the CIELCh color 83, 10.117, 23.092 changes by changing the brightness by 10 percent. The first figure shows a shift by +10% for each color and the second figure -10%.


Similar to the brightness gradients but the following saturation gradients show a change of the CIELCh color 83, 10.117, 23.092 by changing the saturation by 10% instead.



 83, 10.117, 23.092

 83, 10.117, 23.092

 100, 10.117,  
23.092

 73, 10.117, 23.092

 63, 10.117, 23.092

 53, 10.117, 23.092

 43, 10.117, 23.092

 33, 10.117, 23.092

 23, 10.117, 23.092

 13, 10.117, 23.092

 3, 10.117, 23.092

 0, 10.117, 23.092

83, 10.117, 23.092

83, 10.117, 23.092

77, 19.096, 23.865

89, 1.816, 22.277

71, 28.768, 24.852

95, 5.846, 202.304

66, 39.087, 26.153

98, 9.320, 198.888

61, 49.929, 27.864

57, 61.066, 30.073

53, 72.142, 32.809

50, 82.571, 35.904

48, 91.124, 38.715

48, 95.507, 40.290

# Harmonies

# Complementary

The Complementary color scheme is a pair of colors which are on the opposite of each other on the color wheel.



83, 10.117, 23.092



88, 9.339, 202.055

# Rectangle

The Rectangle color scheme consists of four colors that form a rectangle on the color wheel.



83, 10.117, 23.092



83, 10.117, 73.092



83, 10.117, 203.092



83, 10.117, 253.092

# Sweetspot

The Sweet Spot groups the original color and five complimentary colors.



83, 10.115, 23.104



97, 3.490, 22.507



83, 17.490, 326.012



51, 2.488, 22.576



0, 0.000, 0.000



53, 0.007, 296.813



# Same Dimension

The Same Dimension uses a secret algorithm to generate beautiful new colors.



83, 10.115, 23.104



90, 13.684, 23.300



86, 9.189, 77.356



45, 4.650, 22.913



37, 79.488, 40.376



7, 26.421, 23.583





# Inverse Universe

The Inverse Universe completely reimagines the original color for something new.



88, 9.339, 202.055



97, 12.392, 201.938



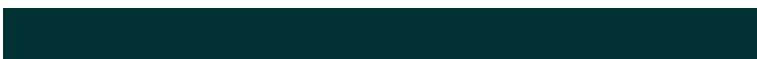
85, 8.972, 260.660



47, 4.376, 202.186



64, 36.515, 202.192

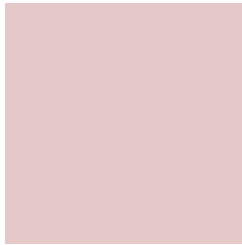


18, 15.433, 201.255



# Previews

## White Background



This preview shows how the CIELCh color 83, 10.117, 23.092 looks on a white background.

## Color Contrast Check

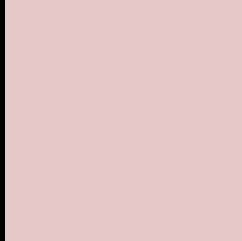
Large Text (above 18pt) WCAG AA × Fail

Any Text WCAG AA × Fail

Large Text (above 18pt) WCAG AAA × Fail

Any Text WCAG AAA × Fail

# Black Background



This preview shows how the CIE LCh color 83, 10.117, 23.092 looks on a black background.

## Color Contrast Check

Large Text (above 18pt) WCAG AA ✓ Pass

Any Text WCAG AA ✓ Pass

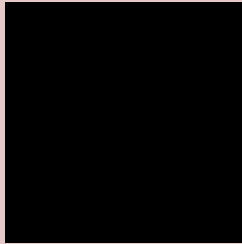
Large Text (above 18pt) WCAG AAA ✓ Pass

Any Text WCAG AAA ✓ Pass

If you want to check with other color combinations, try the [Color Contrast Checker](#).

**CIELCh 83, 10.117, 23.092**

## **Background**



This preview shows how black text looks on a background with the CIELCh color 83, 10.117, 23.092.



This preview shows how white text looks on a background with the CIELCh color 83, 10.117, 23.092.

# Color Blindness Simulation

Color vision deficiency is a very complex topic, and I could not describe the different causes any better than Wikipedia does, so if you want to learn more, you should check out their [article about color blindness](#).

## Dichromacy



### Original Color

83, 10.117, 23.092

### Protanopia

83, 2.406, 60.294

### Deuteranopia

83, 10.858, 20.193



**Tritanopia**  
83, 14.142, 343.903



# Trichromacy



**Original Color**  
83, 10.117, 23.092

**Protanomaly**  
83, 4.912, 32.010

**Deuteranomaly**  
83, 10.476, 20.162

**Tritanomaly**  
83, 11.918, 354.110

# Monochromacy



**Original Color**  
83, 10.117, 23.092

**Achromatopsia**  
84, 0.010, 296.813

**Achromatomaly**  
84, 3.667, 19.527

# CSS Examples

## Text

The CSS property to change the color of the text to CIELCh 83, 10.117, 23.092 is called "color". The color property can be set on classes, ids or directly on the HTML element.

This example shows how text in the color `rgb(228, 201, 200)` looks like.

```
.text, #text, p{  
    color:rgb(228, 201, 200)  
}
```

If you want to add a text shadow in that color use the text-shadow property, you can generate a text shadow directly with our [CSS Text Shadow Generator](#).

Here you see how black text with a 4 pixel rgb(228, 201, 200) colored shadow looks like.

```
.shadow{ text-shadow: 4px 4px 2px rgb(228, 201, 200) }
```

## Border

The CSS property to change the border of an element to CIELCh 83, 10.117, 23.092 is called "border". The border property can be set on classes, ids or directly on the HTML element.

This example shows the color as border, it can be applied via the CSS property "border" or "border-color".

```
.border, #border, table{ border:4px solid rgb(228, 201, 200) }
```

If only the border color should be changed use the property `border-color`.

```
.border{ border-color:rgb(228, 201, 200) }
```

If you want to add a box shadow in that color use:

Here you see how a box with a 4 pixel `rgb(228, 201, 200)` colored shadow looks like.

```
.boxshadow{ -moz-box-shadow:4px 4px 4px  
4px rgb(228, 201, 200); -webkit-box-  
shadow:4px 4px 4px 4px rgb(228, 201, 200);  
box-shadow:4px 4px 4px 4px rgb(228, 201,  
200) }
```

# Background

The CSS property to change the background color of an element to CIELCh 83, 10.117, 23.092 is called "background". The background property can be set on classes, ids or directly on the HTML element.

```
.background, #background, body{  
background: rgb(228, 201, 200) }
```

If only the background color should be changed can be used:

```
.background{ background-color: rgb(228,  
201, 200) }
```

This example shows the color as background, it is applied via the CSS property "background".

To optimize and compress your CSS code, you can use our [online CSS compressor and optimizer](#) based on csstidy. If you want to create a linear or radial gradient as background or border, check our [CSS Gradient Generator](#).

Hey! You found this booklet interesting? Support Converting Colors with the new Membership Option!

The pro membership hides all ads, plus gives you double the colors in the color bucket, and more awesome pro features!

**[Learn more, Memberships starting at \\$2.50/m!](#)**

**Follow me  
on Twitter!**

@ConvertingColor