

# Converting Colors

CIELCh(83, 10.164, 75.397)

Have a look what the booklet for  
CIELCh(83, 10.164, 75.397) contains.

<b>CIELCh(83, 10.171, 75.352)</b> .....	3
<i><b>Conversions</b></i> .....	4
<i><b>Details</b></i> .....	6
<i><b>Harmonies</b></i> .....	11
<i><b>Previews</b></i> .....	20
<i><b>Color Blindness Simulation</b></i> .....	23
<i><b>CSS Examples</b></i> .....	26

# Color

**CIELCh(83, 10.171, 75.352)**

# Conversions

## Conversions Part 1

Format	Color
Hex	DBCCBC
RGB	219, 204, 188
RGB Percent	86%, 80%, 74%
CMY	0.1395, 0.1983, 0.2611
CMYK	0.00, 0.07, 0.14, 0.14
HSL	31°, 30%, 80%
HSV	31°, 14%, 86%
XYZ	60.1588, 62.1629, 56.6405
YIQ	206.6610, 14.0760, -1.7960

# Conversions

## Conversions Part 2

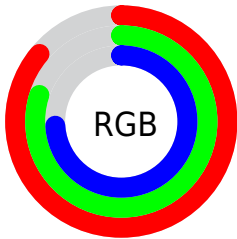
Format	Color
RYB	217, 219, 188
Decimal	14404796
CIELab	83.00, 2.57, 9.84
CIElCh	83, 10.171, 75.352
Yxy	62.1629, 0.3362, 0.3474
Android (android.graphics.Color)	4292594876 (0xFFDBCCBC)
YUV	206.6610, -9.1999, 10.8213
Hunter-Lab	78.8435, -1.7777, 12.5970

# Details

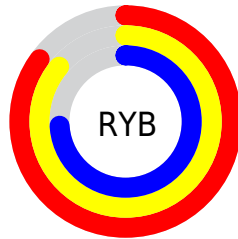
The CIELCh color  $83, 10.171, 75.352$  is a light color, and the websafe version is hex `CCCCCC`. A complement of this color would be  $81, 9.852, 259.134$ , and the grayscale version is  $83, 0.010, 296.813$ .

A 20% lighter version of the original color is  $100, 5.566, 109.748$ , and  $63, 10.119, 75.073$  is the 20% darker color. If you saturate the color by 10%, you get  $80, 17.760, 74.109$ , and if you desaturate by 10%, it is  $86, 2.906, 76.521$ .

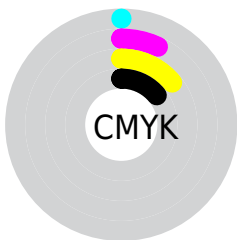
# Distribution



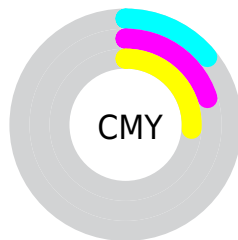
- Red (86%)
- Green (80%)
- Blue (74%)



- Red (85%)
- Yellow (86%)
- Blue (74%)



- Cyan (0%)
- Magenta (7%)
- Yellow (14%)
- Black (14%)




- Cyan (14%)
- Magenta (20%)
- Yellow (26%)


# Brightness & Saturation Gradients


These gradients show how the CIELCh color 83, 10.171, 75.352 changes by changing the brightness by 10 percent. The first figure shows a shift by +10% for each color and the second figure -10%.

Similar to the brightness gradients but the following saturation gradients show a change of the CIELCh color 83, 10.171, 75.352 by changing the saturation by 10% instead.



 83, 10.171, 75.352

 83, 10.171, 75.352

 100, 10.171,  
75.352


 73, 10.171, 75.352

 63, 10.171, 75.352

 53, 10.171, 75.352

 43, 10.171, 75.352

 33, 10.171, 75.352

 23, 10.171, 75.352

 13, 10.171, 75.352

 3, 10.171, 75.352

 0, 10.171, 75.352

83, 10.171, 75.352

83, 10.171, 75.352

80, 17.760, 74.109

86, 2.906, 76.521

77, 25.688, 72.824

89, 4.060, 257.963

74, 33.947, 71.520

93, 10.758,  
259.085

71, 42.482, 70.192

95, 10.045,  
223.483

68, 51.149, 68.811

65, 59.628, 67.303

98, 11.987,  
198.705

63, 67.293, 65.505

60, 73.154, 63.117

59, 75.773, 61.488

# Harmonies

# Complementary

The Complementary color scheme is a pair of colors which are on the opposite of each other on the color wheel.



83, 10.171, 75.352



81, 9.852, 259.134

# Rectangle

The Rectangle color scheme consists of four colors that form a rectangle on the color wheel.



83, 10.171, 75.352



83, 10.171, 125.352



83, 10.171, 255.352



83, 10.171, 305.352

# Sweetspot

The Sweet Spot groups the original color and five complimentary colors.



83, 10.172, 75.366



99, 3.176, 76.530



79, 14.120, 344.832



52, 2.262, 76.458



0, 0.000, 0.000



53, 0.007, 296.813

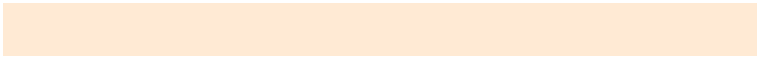


# Same Dimension

The Same Dimension uses a secret algorithm to generate beautiful new colors.



83, 10.172, 75.366



94, 13.913, 74.992



87, 16.133, 108.811



44, 4.041, 75.937



47, 63.380, 62.135



11, 18.367, 61.677





# Inverse Universe

The Inverse Universe completely reimagines the original color for something new.



81, 9.852, 259.134



91, 13.369, 259.603



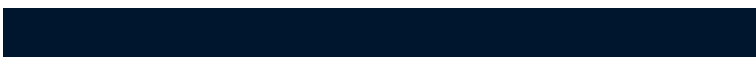
77, 16.663, 291.699



44, 3.962, 258.457



37, 55.603, 285.403

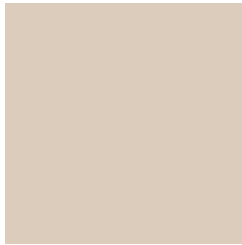


7, 18.579, 275.366



# Previews

## White Background



This preview shows how the CIELCh color 83, 10.171, 75.352 looks on a white background.

## Color Contrast Check

Large Text (above 18pt) WCAG AA × Fail

Any Text WCAG AA × Fail

Large Text (above 18pt) WCAG AAA × Fail

Any Text WCAG AAA × Fail

# Black Background



This preview shows how the CIELCh color 83, 10.171, 75.352 looks on a black background.

## Color Contrast Check

Large Text (above 18pt) WCAG AA ✓ Pass

Any Text WCAG AA ✓ Pass

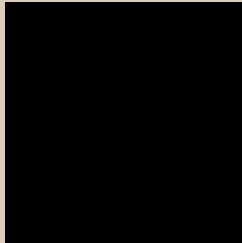
Large Text (above 18pt) WCAG AAA ✓ Pass

Any Text WCAG AAA ✓ Pass

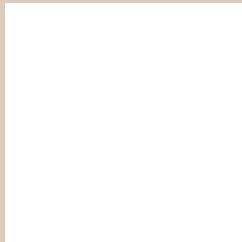
If you want to check with other color combinations, try the [Color Contrast Checker](#).

# CIELCh 83, 10.171, 75.352

## Background



This preview shows how black text looks on a background with the CIELCh color 83, 10.171, 75.352.

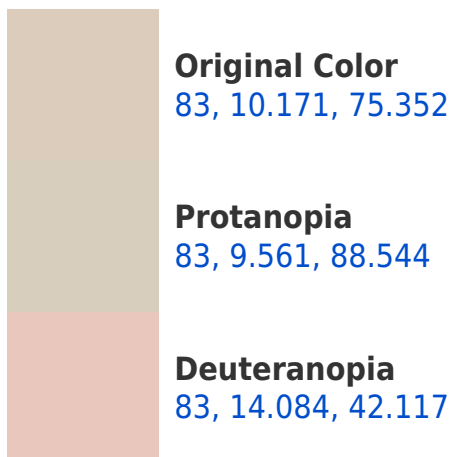


This preview shows how white text looks on a background with the CIELCh color 83, 10.171, 75.352.

# Color Blindness Simulation

Color vision deficiency is a very complex topic, and I could not describe the different causes any better than Wikipedia does, so if you want to learn more, you should check out their [article about color blindness](#).

## Dichromacy





**Tritanopia**  
83, 11.913, 335.142



# Trichromacy



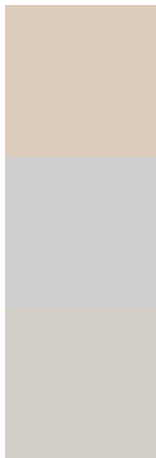
**Original Color**  
83, 10.171, 75.352

**Protanomaly**  
83, 9.562, 81.064

**Deuteranomaly**  
83, 12.116, 51.327

**Tritanomaly**  
83, 7.677, 4.023

# Monochromacy



**Original Color**  
83, 10.171, 75.352

**Achromatopsia**  
83, 0.010, 296.813

**Achromatomaly**  
83, 3.841, 74.635

# CSS Examples

## Text

The CSS property to change the color of the text to CIELCh 83, 10.171, 75.352 is called "color". The color property can be set on classes, ids or directly on the HTML element.

This example shows how text in the color `rgb(219, 204, 188)` looks like.

```
.text, #text, p{  
    color:rgb(219, 204, 188)  
}
```

If you want to add a text shadow in that color use the text-shadow property, you can generate a text shadow directly with our [CSS Text Shadow Generator](#).

Here you see how black text with a 4 pixel rgb(219, 204, 188) colored shadow looks like.

```
.shadow{ text-shadow: 4px 4px 2px rgb(219, 204, 188) }
```

## Border

The CSS property to change the border of an element to CIELCh 83, 10.171, 75.352 is called "border". The border property can be set on classes, ids or directly on the HTML element.

This example shows the color as border, it can be applied via the CSS property "border" or "border-color".

```
.border, #border, table{ border:4px solid rgb(219, 204, 188) }
```

If only the border color should be changed use the property `border-color`.

```
.border{ border-color:rgb(219, 204, 188) }
```

If you want to add a box shadow in that color use:

Here you see how a box with a 4 pixel `rgb(219, 204, 188)` colored shadow looks like.

```
.boxshadow{ -moz-box-shadow:4px 4px 4px  
4px rgb(219, 204, 188); -webkit-box-  
shadow:4px 4px 4px 4px rgb(219, 204, 188);  
box-shadow:4px 4px 4px 4px rgb(219, 204,  
188) }
```

# Background

The CSS property to change the background color of an element to CIELCh 83, 10.171, 75.352 is called "background". The background property can be set on classes, ids or directly on the HTML element.

```
.background, #background, body{  
background: rgb(219, 204, 188) }
```

If only the background color should be changed can be used:

```
.background{ background-color: rgb(219,  
204, 188) }
```

This example shows the color as background, it is applied via the CSS property "background".

To optimize and compress your CSS code, you can use our [online CSS compressor and optimizer](#) based on csstidy. If you want to create a linear or radial gradient as background or border, check our [CSS Gradient Generator](#).

Hey! You found this booklet interesting? Support Converting Colors with the new Membership Option!

The pro membership hides all ads, plus gives you double the colors in the color bucket, and more awesome pro features!

**[Learn more, Memberships starting at \\$2.50/m!](#)**

**Follow me  
on Twitter!**

@ConvertingColor