

Converting Colors

CIELCh(83, 10.755, 5.771)

Have a look what the booklet for
CIELCh(83, 10.755, 5.771) contains.

CIELCh(83, 10.714, 6.012)	3
<i>Conversions</i>	4
<i>Details</i>	6
<i>Harmonies</i>	11
<i>Previews</i>	20
<i>Color Blindness Simulation</i>	23
<i>CSS Examples</i>	26

Color

CIELCh(83, 10.714, 6.012)

Conversions

Conversions Part 1

Format	Color
Hex	E4C8CD
RGB	228, 200, 205
RGB Percent	89%, 78%, 80%
CMY	0.1062, 0.2159, 0.1963
CMYK	0.00, 0.12, 0.10, 0.11
HSL	349°, 34%, 84%
HSV	349°, 12%, 89%
XYZ	63.6213, 62.1629, 66.3587
YIQ	208.9420, 15.0830, 7.4910

Conversions

Conversions Part 2

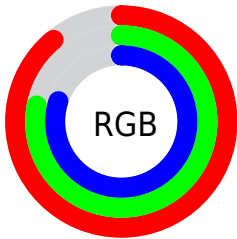
Format	Color
R _Y B	228, 200, 205
Decimal	14993613
CIE Lab	83.00, 10.66, 1.12
CIE LCh	83, 10.714, 6.012
Yxy	62.1629, 0.3311, 0.3235
Android (android.graphics.Color)	4293183693 (0xFFE4C8CD)
YUV	208.9420, -1.9434, 16.7139
Hunter-Lab	78.8435, 6.0613, 5.2889

Details

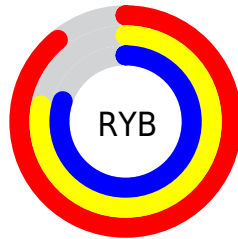
The CIELCh color **83, 10.714, 6.012** is a light color, and the websafe version is hex **FFCCCC**. A complement of this color would be **88, 10.170, 183.882**, and the grayscale version is **84, 0.010, 296.813**.

A 20% lighter version of the original color is **100, 0.012, 296.813**, and **63, 10.602, 5.248** is the 20% darker color. If you saturate the color by 10%, you get **77, 19.958, 7.190**, and if you desaturate by 10%, it is **89, 1.937, 4.816**.

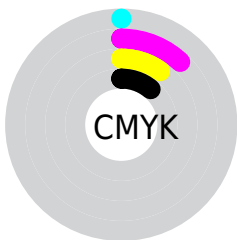
Distribution



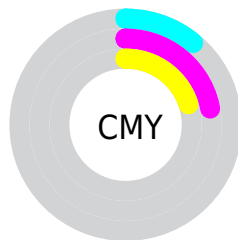
- Red (89%)
- Green (78%)
- Blue (80%)



- Red (89%)
- Yellow (78%)
- Blue (80%)



- Cyan (0%)
- Magenta (12%)
- Yellow (10%)
- Black (11%)

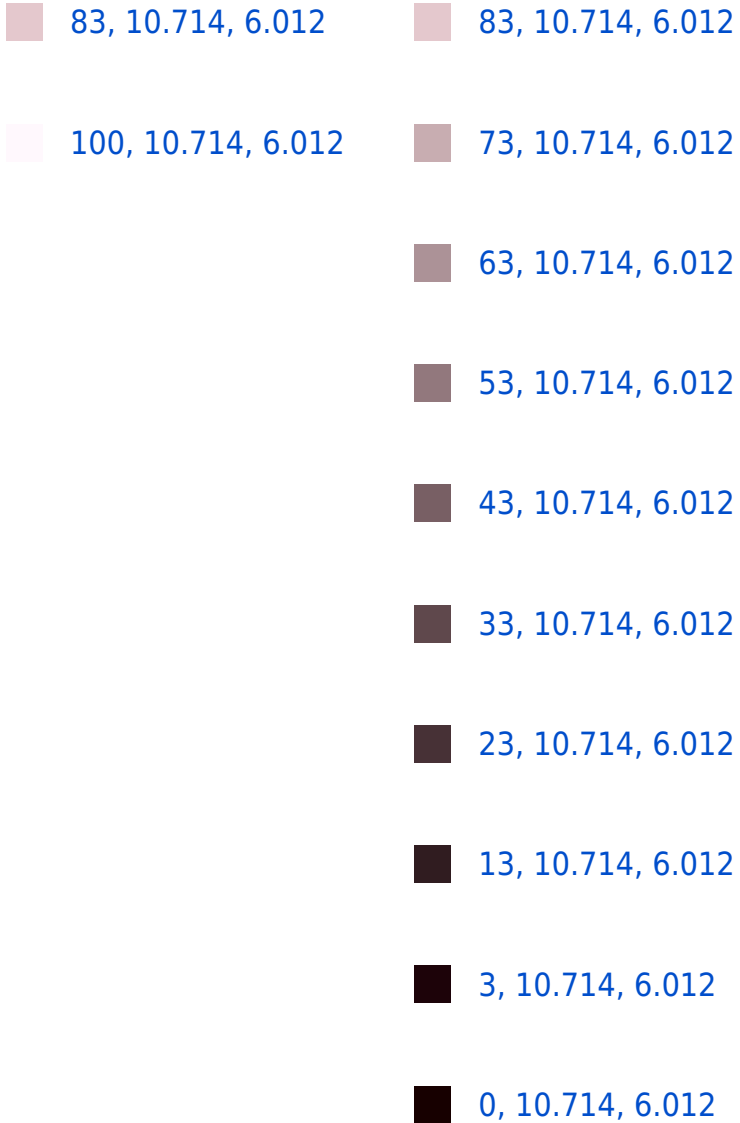


- Cyan (11%)
- Magenta (22%)
- Yellow (20%)

Brightness & Saturation Gradients

These gradients show how the CIELCh color 83, 10.714, 6.012 changes by changing the brightness by 10 percent. The first figure shows a shift by +10% for each color and the second figure -10%.

Similar to the brightness gradients but the following saturation gradients show a change of the CIELCh color 83, 10.714, 6.012 by changing the saturation by 10% instead.



83, 10.714, 6.012

83, 10.714, 6.012

77, 19.958, 7.190

89, 1.937, 4.816

71, 29.608, 8.583

95, 6.348, 184.375

66, 39.514, 10.294

98, 9.207, 198.896

61, 49.433, 12.434

56, 59.026, 15.145

53, 67.913, 18.578

50, 75.795, 22.835

48, 82.578, 27.832

48, 87.239, 31.798

Harmonies

Complementary

The Complementary color scheme is a pair of colors which are on the opposite of each other on the color wheel.



83, 10.714, 6.012



88, 10.170, 183.882

Rectangle

The Rectangle color scheme consists of four colors that form a rectangle on the color wheel.



83, 10.714, 6.012



83, 10.714, 56.012



83, 10.714, 186.012



83, 10.714, 236.012

Sweetspot

The Sweet Spot groups the original color and five complimentary colors.



83, 10.712, 6.021



97, 3.735, 5.101



83, 16.948, 319.846



51, 2.660, 5.197



0, 0.000, 0.000



53, 0.007, 296.813

Same Dimension

The Same Dimension uses a secret algorithm to generate beautiful new colors.



83, 10.712, 6.021



90, 14.440, 6.332



85, 8.531, 52.683



45, 4.942, 5.716



37, 72.030, 30.881



7, 26.689, 14.322

Inverse Universe

The Inverse Universe completely reimagines the original color for something new.



83, 10.712, 6.021



90, 14.440, 6.332



86, 7.992, 234.743



45, 4.942, 5.716



37, 72.030, 30.881



7, 26.689, 14.322

Previews

White Background



This preview shows how the CIELCh color 83, 10.714, 6.012 looks on a white background.

Color Contrast Check

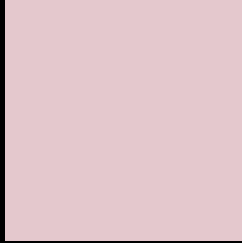
Large Text (above 18pt) WCAG AA × Fail

Any Text WCAG AA × Fail

Large Text (above 18pt) WCAG AAA × Fail

Any Text WCAG AAA × Fail

Black Background



This preview shows how the CIELCh color 83, 10.714, 6.012 looks on a black background.

Color Contrast Check

Large Text (above 18pt) WCAG AA ✓ Pass

Any Text WCAG AA ✓ Pass

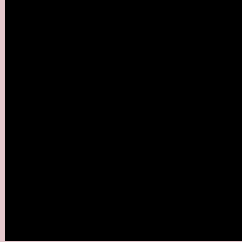
Large Text (above 18pt) WCAG AAA ✓ Pass

Any Text WCAG AAA ✓ Pass

If you want to check with other color combinations, try the [Color Contrast Checker](#).

CIELCh 83, 10.714, 6.012

Background



This preview shows how black text looks on a background with the CIELCh color 83, 10.714, 6.012.



This preview shows how white text looks on a background with the CIELCh color 83, 10.714, 6.012.

Color Blindness Simulation

Color vision deficiency is a very complex topic, and I could not describe the different causes any better than Wikipedia does, so if you want to learn more, you should check out their [article about color blindness](#).

Dichromacy



Original Color

83, 10.714, 6.012

Protanopia

83, 1.813, 343.573

Deuteranopia

83, 10.350, 5.463



Tritanopia
83, 13.534, 344.738

Trichromacy



Original Color
83, 10.714, 6.012

Protanomaly
83, 5.033, 1.384

Deuteranomaly
83, 10.350, 5.463

Tritanomaly
83, 12.714, 350.598

Monochromacy



Original Color
83, 10.714, 6.012

Achromatopsia
84, 0.010, 296.813

Achromatomaly
84, 3.814, 3.529

CSS Examples

Text

The CSS property to change the color of the text to CIELCh 83, 10.714, 6.012 is called "color". The color property can be set on classes, ids or directly on the HTML element.

This example shows how text in the color `rgb(228, 200, 205)` looks like.

```
.text, #text, p{  
    color:rgb(228, 200, 205)  
}
```

If you want to add a text shadow in that color use the text-shadow property, you can generate a text shadow directly with our [CSS Text Shadow Generator](#).

Here you see how black text with a 4 pixel rgb(228, 200, 205) colored shadow looks like.

```
.shadow{ text-shadow: 4px 4px 2px rgb(228, 200, 205) }
```

Border

The CSS property to change the border of an element to CIELCh 83, 10.714, 6.012 is called "border". The border property can be set on classes, ids or directly on the HTML element.

This example shows the color as border, it can be applied via the CSS property "border" or "border-color".

```
.border, #border, table{ border:4px solid rgb(228, 200, 205) }
```

If only the border color should be changed use the property `border-color`.

```
.border{ border-color:rgb(228, 200, 205) }
```

If you want to add a box shadow in that color use:

Here you see how a box with a 4 pixel `rgb(228, 200, 205)` colored shadow looks like.

```
.boxshadow{ -moz-box-shadow:4px 4px 4px  
4px rgb(228, 200, 205); -webkit-box-  
shadow:4px 4px 4px 4px rgb(228, 200, 205);  
box-shadow:4px 4px 4px 4px rgb(228, 200,  
205) }
```

Background

The CSS property to change the background color of an element to CIELCh 83, 10.714, 6.012 is called "background". The background property can be set on classes, ids or directly on the HTML element.

```
.background, #background, body{  
background: rgb(228, 200, 205) }
```

If only the background color should be changed can be used:

```
.background{ background-color: rgb(228,  
200, 205) }
```

This example shows the color as background, it is applied via the CSS property "background".

To optimize and compress your CSS code, you can use our [online CSS compressor and optimizer](#) based on csstidy. If you want to create a linear or radial gradient as background or border, check our [CSS Gradient Generator](#).

Hey! You found this booklet interesting? Support Converting Colors with the new Membership Option!

The pro membership hides all ads, plus gives you double the colors in the color bucket, and more awesome pro features!

[Learn more, Memberships starting at \\$2.50/m!](#)

**Follow me
on Twitter!**

@ConvertingColor