

Converting Colors

CIELCh(83, 11.383, 38.893)

Have a look what the booklet for
CIELCh(83, 11.383, 38.893) contains.

CIELCh(83, 11.234, 39.178)	3
<i>Conversions</i>	4
<i>Details</i>	6
<i>Harmonies</i>	11
<i>Previews</i>	20
<i>Color Blindness Simulation</i>	23
<i>CSS Examples</i>	26

Color

CIELCh(83, 11.234, 39.178)

Conversions

Conversions Part 1

Format	Color
Hex	E5C9C2
RGB	229, 201, 194
RGB Percent	90%, 79%, 76%
CMY	0.1029, 0.2127, 0.2401
CMYK	0.00, 0.12, 0.15, 0.10
HSL	12°, 40%, 83%
HSV	12°, 15%, 90%
XYZ	62.7756, 62.1629, 59.5885
YIQ	208.5740, 18.9350, 3.7590

Conversions

Conversions Part 2

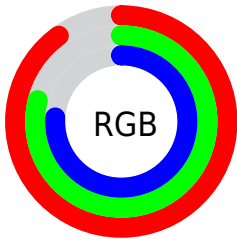
Format	Color
R _Y B	229, 203, 194
Decimal	15059394
CIE Lab	83.00, 8.71, 7.10
CIE LCh	83, 11.234, 39.178
Yxy	62.1629, 0.3402, 0.3369
Android (android.graphics.Color)	4293249474 (0xFFE5C9C2)
YUV	208.5740, -7.1850, 17.9136
Hunter-Lab	78.8435, 4.1467, 10.3801

Details

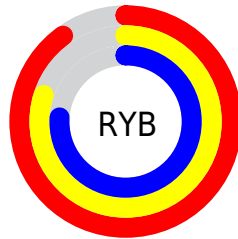
The CIELCh color **83, 11.234, 39.178** is a light color, and the websafe version is hex **FFCCCC**. A complement of this color would be **87, 10.175, 220.054**, and the grayscale version is **84, 0.010, 296.813**.

A 20% lighter version of the original color is **100, 2.525, 109.959**, and **63, 11.246, 40.468** is the 20% darker color. If you saturate the color by 10%, you get **78, 19.370, 39.190**, and if you desaturate by 10%, it is **88, 3.732, 39.223**.

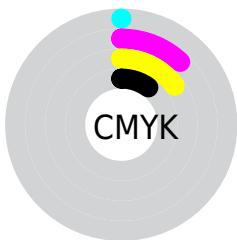
Distribution



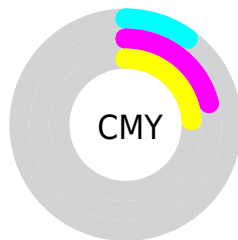
- Red (90%)
- Green (79%)
- Blue (76%)



- Red (90%)
- Yellow (80%)
- Blue (76%)



- Cyan (0%)
- Magenta (12%)
- Yellow (15%)
- Black (10%)



- Cyan (10%)
- Magenta (21%)
- Yellow (24%)


Brightness & Saturation Gradients

These gradients show how the CIELCh color 83, 11.234, 39.178 changes by changing the brightness by 10 percent. The first figure shows a shift by +10% for each color and the second figure -10%.

Similar to the brightness gradients but the following saturation gradients show a change of the CIELCh color 83, 11.234, 39.178 by changing the saturation by 10% instead.

 83, 11.234, 39.178

 83, 11.234, 39.178

 100, 11.234,
39.178

 73, 11.234, 39.178

 63, 11.234, 39.178

 53, 11.234, 39.178

 43, 11.234, 39.178

 33, 11.234, 39.178

 23, 11.234, 39.178

 13, 11.234, 39.178

 3, 11.234, 39.178

 0, 11.234, 39.178

83, 11.234, 39.178

83, 11.234, 39.178

78, 19.370, 39.190

88, 3.732, 39.223

73, 28.186, 39.328

93, 3.190, 219.799

68, 37.698, 39.650

98, 8.935, 198.915

64, 47.871, 40.196

60, 58.578, 40.978

56, 69.522, 41.944

53, 80.017, 42.867

51, 88.593, 43.164

50, 91.822, 43.176

Harmonies

Complementary

The Complementary color scheme is a pair of colors which are on the opposite of each other on the color wheel.



83, 11.234, 39.178



87, 10.175, 220.054

Rectangle

The Rectangle color scheme consists of four colors that form a rectangle on the color wheel.



83, 11.234, 39.178



83, 11.234, 89.178



83, 11.234, 219.178



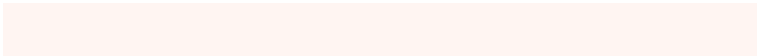
83, 11.234, 269.178

Sweetspot

The Sweet Spot groups the original color and five complimentary colors.



83, 11.233, 39.191



97, 3.843, 39.220



82, 19.484, 331.475



51, 2.630, 39.228



0, 0.000, 0.000



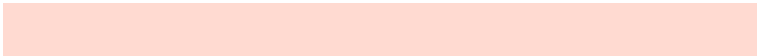
53, 0.007, 296.813

Same Dimension

The Same Dimension uses a secret algorithm to generate beautiful new colors.



83, 11.233, 39.191



90, 14.606, 39.180



87, 13.345, 91.791



45, 4.082, 39.225



39, 75.865, 43.567



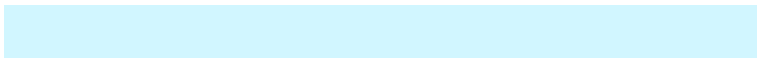
8, 23.641, 33.245

Inverse Universe

The Inverse Universe completely reimagines the original color for something new.



87, 10.175, 220.054



95, 12.969, 220.178



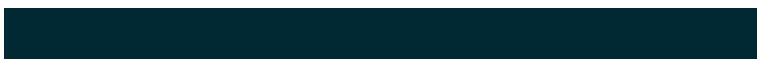
82, 13.385, 275.779



47, 3.848, 219.856



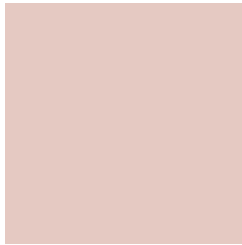
55, 33.612, 235.485



14, 13.983, 228.760

Previews

White Background



This preview shows how the CIELCh color 83, 11.234, 39.178 looks on a white background.

Color Contrast Check

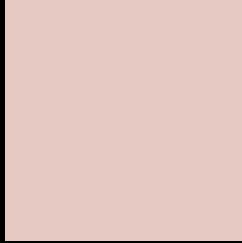
Large Text (above 18pt) WCAG AA × Fail

Any Text WCAG AA × Fail

Large Text (above 18pt) WCAG AAA × Fail

Any Text WCAG AAA × Fail

Black Background



This preview shows how the CIELCh color 83, 11.234, 39.178 looks on a black background.

Color Contrast Check

Large Text (above 18pt) WCAG AA ✓ Pass

Any Text WCAG AA ✓ Pass

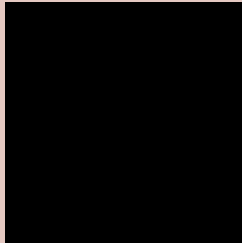
Large Text (above 18pt) WCAG AAA ✓ Pass

Any Text WCAG AAA ✓ Pass

If you want to check with other color combinations, try the [Color Contrast Checker](#).

CIELCh 83, 11.234, 39.178

Background



This preview shows how black text looks on a background with the CIELCh color 83, 11.234, 39.178.

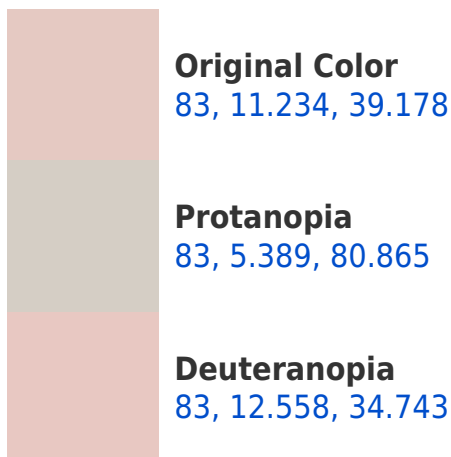


This preview shows how white text looks on a background with the CIELCh color 83, 11.234, 39.178.

Color Blindness Simulation

Color vision deficiency is a very complex topic, and I could not describe the different causes any better than Wikipedia does, so if you want to learn more, you should check out their [article about color blindness](#).

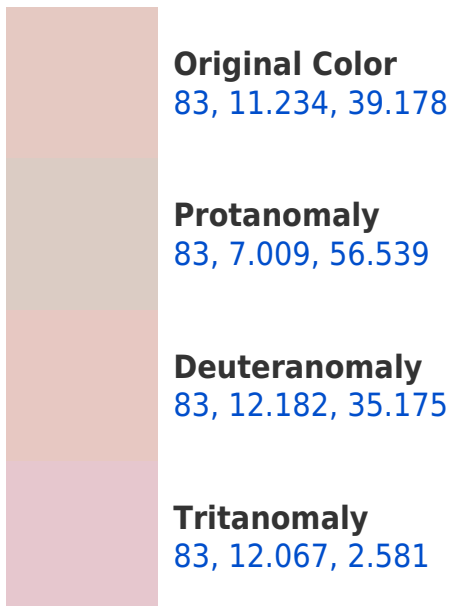
Dichromacy



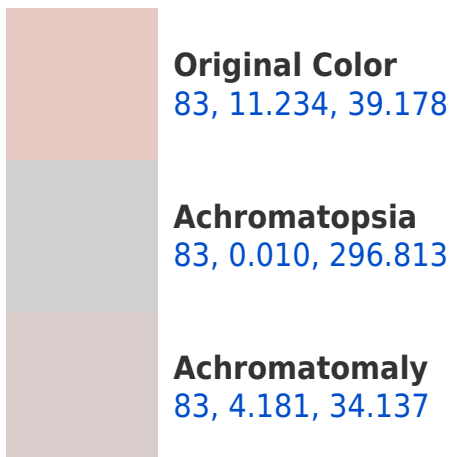


Tritanopia
83, 14.456, 347.427

Trichromacy



Monochromacy



CSS Examples

Text

The CSS property to change the color of the text to CIELCh 83, 11.234, 39.178 is called "color". The color property can be set on classes, ids or directly on the HTML element.

This example shows how text in the color `rgb(229, 201, 194)` looks like.

```
.text, #text, p{  
    color:rgb(229, 201, 194)  
}
```

If you want to add a text shadow in that color use the text-shadow property, you can generate a text shadow directly with our [CSS Text Shadow Generator](#).

Here you see how black text with a 4 pixel rgb(229, 201, 194) colored shadow looks like.

```
.shadow{ text-shadow: 4px 4px 2px rgb(229, 201, 194) }
```

Border

The CSS property to change the border of an element to CIELCh 83, 11.234, 39.178 is called "border". The border property can be set on classes, ids or directly on the HTML element.

This example shows the color as border, it can be applied via the CSS property "border" or "border-color".

```
.border, #border, table{ border:4px solid rgb(229, 201, 194) }
```

If only the border color should be changed use the property `border-color`.

```
.border{ border-color:rgb(229, 201, 194) }
```

If you want to add a box shadow in that color use:

Here you see how a box with a 4 pixel `rgb(229, 201, 194)` colored shadow looks like.

```
.boxshadow{ -moz-box-shadow:4px 4px 4px 4px rgb(229, 201, 194); -webkit-box-shadow:4px 4px 4px 4px rgb(229, 201, 194); box-shadow:4px 4px 4px 4px rgb(229, 201, 194) }
```

Background

The CSS property to change the background color of an element to CIELCh 83, 11.234, 39.178 is called "background". The background property can be set on classes, ids or directly on the HTML element.

```
.background, #background, body{  
background: rgb(229, 201, 194) }
```

If only the background color should be changed can be used:

```
.background{ background-color: rgb(229,  
201, 194) }
```

This example shows the color as background, it is applied via the CSS property "background".

To optimize and compress your CSS code, you can use our [online CSS compressor and optimizer](#) based on csstidy. If you want to create a linear or radial gradient as background or border, check our [CSS Gradient Generator](#).

Hey! You found this booklet interesting? Support Converting Colors with the new Membership Option!

The pro membership hides all ads, plus gives you double the colors in the color bucket, and more awesome pro features!

[Learn more, Memberships starting at \\$2.50/m!](#)

**Follow me
on Twitter!**

@ConvertingColor