

Converting Colors

CIELCh(83, 11.663, 13.867)

Have a look what the booklet for
CIELCh(83, 11.663, 13.867) contains.

CIELCh(83, 11.677, 12.532)	3
<i>Conversions</i>	4
<i>Details</i>	6
<i>Harmonies</i>	11
<i>Previews</i>	20
<i>Color Blindness Simulation</i>	23
<i>CSS Examples</i>	26

Color

CIELCh(83, 11.677, 12.532)

Conversions

Conversions Part 1

Format	Color
Hex	E6C7CA
RGB	230, 199, 202
RGB Percent	90%, 78%, 79%
CMY	0.0967, 0.2183, 0.2065
CMYK	0.00, 0.13, 0.12, 0.10
HSL	354°, 39%, 84%
HSV	354°, 13%, 90%
XYZ	63.9464, 62.1629, 64.7152
YIQ	208.6110, 17.5130, 7.5050

Conversions

Conversions Part 2

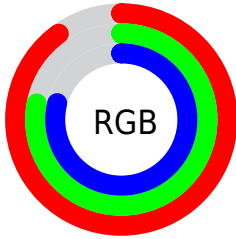
Format	Color
R _Y B	230, 199, 202
Decimal	15124426
CIE Lab	83.00, 11.40, 2.53
CIE LCh	83, 11.677, 12.532
Yxy	62.1629, 0.3351, 0.3258
Android (android.graphics.Color)	4293314506 (0xFFE6C7CA)
YUV	208.6110, -3.2592, 18.7582
Hunter-Lab	78.8435, 6.7973, 6.5248

Details

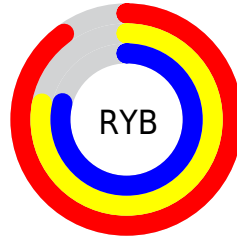
The CIELCh color **83, 11.677, 12.532** is a light color, and the websafe version is hex **FFCCCC**. A complement of this color would be **89, 10.878, 190.442**, and the grayscale version is **84, 0.010, 296.813**.

A 20% lighter version of the original color is **100, 0.012, 296.813**, and **63, 11.627, 12.308** is the 20% darker color. If you saturate the color by 10%, you get **77, 21.017, 13.657**, and if you desaturate by 10%, it is **89, 2.904, 11.493**.

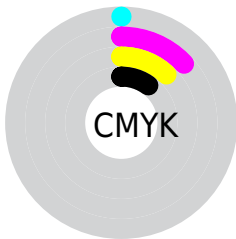
Distribution



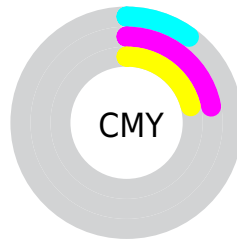
- Red (90%)
- Green (78%)
- Blue (79%)



- Red (90%)
- Yellow (78%)
- Blue (79%)



- Cyan (0%)
- Magenta (13%)
- Yellow (12%)
- Black (10%)



- Cyan (10%)
- Magenta (22%)
- Yellow (21%)


Brightness & Saturation Gradients

These gradients show how the CIELCh color 83, 11.677, 12.532 changes by changing the brightness by 10 percent. The first figure shows a shift by +10% for each color and the second figure -10%.

Similar to the brightness gradients but the following saturation gradients show a change of the CIELCh color 83, 11.677, 12.532 by changing the saturation by 10% instead.

 83, 11.677, 12.532

 83, 11.677, 12.532

 100, 11.677,
12.532

 73, 11.677, 12.532

 63, 11.677, 12.532

 53, 11.677, 12.532

 43, 11.677, 12.532

 33, 11.677, 12.532

 23, 11.677, 12.532

 13, 11.677, 12.532

 3, 11.677, 12.532

 0, 11.677, 12.532

83, 11.677, 12.532

83, 11.677, 12.532

77, 21.017, 13.657

89, 2.904, 11.493

71, 30.882, 15.025

96, 5.298, 191.068

66, 41.148, 16.744

98, 8.405, 198.953

61, 51.596, 18.933

56, 61.910, 21.725

53, 71.729, 25.232

50, 80.716, 29.435

49, 88.493, 33.990

48, 92.693, 36.633

Harmonies

Complementary

The Complementary color scheme is a pair of colors which are on the opposite of each other on the color wheel.



83, 11.677, 12.532



89, 10.878, 190.442

Rectangle

The Rectangle color scheme consists of four colors that form a rectangle on the color wheel.



83, 11.677, 12.532



83, 11.677, 62.532



83, 11.677, 192.532



83, 11.677, 242.532

Sweetspot

The Sweet Spot groups the original color and five complimentary colors.



83, 11.675, 12.541



97, 3.652, 11.568



83, 19.201, 322.357



51, 2.602, 11.659



0, 0.000, 0.000



53, 0.007, 296.813

Same Dimension

The Same Dimension uses a secret algorithm to generate beautiful new colors.



83, 11.675, 12.541



89, 15.202, 12.816



86, 9.527, 62.474



45, 4.847, 12.140



37, 75.931, 35.902



6, 26.827, 17.756

Inverse Universe

The Inverse Universe completely reimagines the original color for something new.



83, 11.675, 12.541



89, 15.202, 12.816



86, 9.009, 245.516



45, 4.847, 12.140



37, 75.931, 35.902



6, 26.827, 17.756

Previews

White Background



This preview shows how the CIELCh color 83, 11.677, 12.532 looks on a white background.

Color Contrast Check

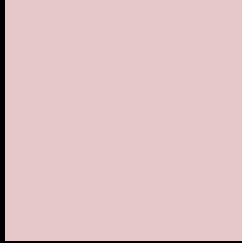
Large Text (above 18pt) WCAG AA × Fail

Any Text WCAG AA × Fail

Large Text (above 18pt) WCAG AAA × Fail

Any Text WCAG AAA × Fail

Black Background



This preview shows how the CIE LCh color 83, 11.677, 12.532 looks on a black background.

Color Contrast Check

Large Text (above 18pt) WCAG AA ✓ Pass

Any Text WCAG AA ✓ Pass

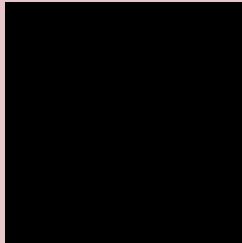
Large Text (above 18pt) WCAG AAA ✓ Pass

Any Text WCAG AAA ✓ Pass

If you want to check with other color combinations, try the [Color Contrast Checker](#).

CIELCh 83, 11.677, 12.532

Background



This preview shows how black text looks on a background with the CIELCh color 83, 11.677, 12.532.

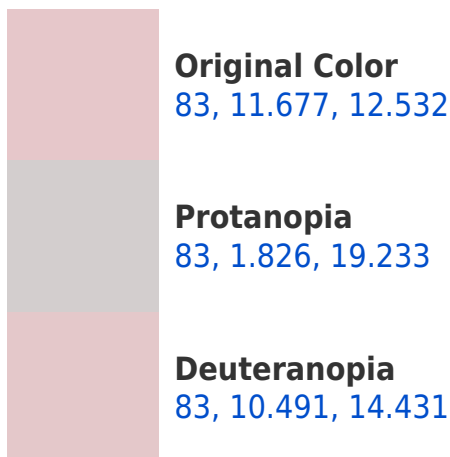


This preview shows how white text looks on a background with the CIELCh color 83, 11.677, 12.532.

Color Blindness Simulation

Color vision deficiency is a very complex topic, and I could not describe the different causes any better than Wikipedia does, so if you want to learn more, you should check out their [article about color blindness](#).

Dichromacy





Tritanopia
83, 14.767, 348.251

Trichromacy



Original Color
83, 11.677, 12.532

Protanomaly
83, 5.183, 13.868

Deuteranomaly
83, 10.869, 14.666

Tritanomaly
83, 13.485, 355.050

Monochromacy



Original Color
83, 11.677, 12.532

Achromatopsia
84, 0.010, 296.813

Achromatomaly
83, 4.531, 6.196

CSS Examples

Text

The CSS property to change the color of the text to CIELCh 83, 11.677, 12.532 is called "color". The color property can be set on classes, ids or directly on the HTML element.

This example shows how text in the color `rgb(230, 199, 202)` looks like.

```
.text, #text, p{  
    color:rgb(230, 199, 202)  
}
```

If you want to add a text shadow in that color use the text-shadow property, you can generate a text shadow directly with our [CSS Text Shadow Generator](#).

Here you see how black text with a 4 pixel rgb(230, 199, 202) colored shadow looks like.

```
.shadow{ text-shadow: 4px 4px 2px rgb(230, 199, 202) }
```

Border

The CSS property to change the border of an element to CIELCh 83, 11.677, 12.532 is called "border". The border property can be set on classes, ids or directly on the HTML element.

This example shows the color as border, it can be applied via the CSS property "border" or "border-color".

```
.border, #border, table{ border:4px solid rgb(230, 199, 202) }
```

If only the border color should be changed use the property border-color.

```
.border{ border-color:rgb(230, 199, 202) }
```

If you want to add a box shadow in that color use:

Here you see how a box with a 4 pixel rgb(230, 199, 202) colored shadow looks like.

```
.boxshadow{ -moz-box-shadow:4px 4px 4px  
4px rgb(230, 199, 202); -webkit-box-  
shadow:4px 4px 4px 4px rgb(230, 199, 202);  
box-shadow:4px 4px 4px 4px rgb(230, 199,  
202) }
```

Background

The CSS property to change the background color of an element to CIELCh 83, 11.677, 12.532 is called "background". The background property can be set on classes, ids or directly on the HTML element.

```
.background, #background, body{  
background: rgb(230, 199, 202) }
```

If only the background color should be changed can be used:

```
.background{ background-color: rgb(230,  
199, 202) }
```

This example shows the color as background, it is applied via the CSS property "background".

To optimize and compress your CSS code, you can use our [online CSS compressor and optimizer](#) based on csstidy. If you want to create a linear or radial gradient as background or border, check our [CSS Gradient Generator](#).

Hey! You found this booklet interesting? Support Converting Colors with the new Membership Option!

The pro membership hides all ads, plus gives you double the colors in the color bucket, and more awesome pro features!

[Learn more, Memberships starting at \\$2.50/m!](#)

**Follow me
on Twitter!**

@ConvertingColor