

Converting Colors

CIELCh(83, 11.987, 69.537)

Have a look what the booklet for
CIELCh(83, 11.987, 69.537) contains.

CIELCh(83, 11.790, 68.938)	3
<i>Conversions</i>	4
<i>Details</i>	6
<i>Harmonies</i>	11
<i>Previews</i>	20
<i>Color Blindness Simulation</i>	23
<i>CSS Examples</i>	26

Color

CIELCh(83, 11.790, 68.938)

Conversions

Conversions Part 1

Format	Color
Hex	DFCBBA
RGB	223, 203, 186
RGB Percent	87%, 80%, 73%
CMY	0.1242, 0.2026, 0.2693
CMYK	0.00, 0.09, 0.17, 0.12
HSL	28°, 37%, 80%
HSV	28°, 17%, 88%
XYZ	60.8615, 62.1629, 55.4219
YIQ	207.0420, 17.3770, -1.0470

Conversions

Conversions Part 2

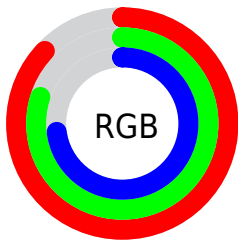
Format	Color
R _Y B	223, 217, 186
Decimal	14666682
CIE Lab	83.00, 4.24, 11.00
CIE LCh	83, 11.790, 68.938
Yxy	62.1629, 0.3411, 0.3484
Android (android.graphics.Color)	4292856762 (0xFFDFCBBA)
YUV	207.0420, -10.3737, 13.9952
Hunter-Lab	78.8435, -0.1868, 13.5134

Details

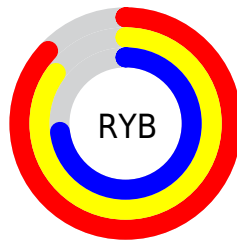
The CIELCh color **83, 11.790, 68.938** is a light color, and the websafe version is hex **CCCCCC**. A complement of this color would be **82, 11.171, 253.164**, and the grayscale version is **83, 0.010, 296.813**.

A 20% lighter version of the original color is **100, 6.580, 109.674**, and **63, 11.869, 68.238** is the 20% darker color. If you saturate the color by 10%, you get **79, 19.427, 67.793**, and if you desaturate by 10%, it is **87, 4.551, 70.061**.

Distribution



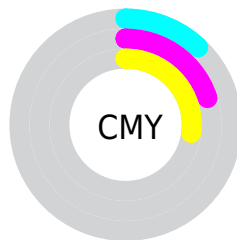
- Red (87%)
- Green (80%)
- Blue (73%)



- Red (87%)
- Yellow (85%)
- Blue (73%)



- Cyan (0%)
- Magenta (9%)
- Yellow (17%)
- Black (12%)



- Cyan (12%)
- Magenta (20%)
- Yellow (27%)


Brightness & Saturation Gradients

These gradients show how the CIELCh color 83, 11.790, 68.938 changes by changing the brightness by 10 percent. The first figure shows a shift by +10% for each color and the second figure -10%.

Similar to the brightness gradients but the following saturation gradients show a change of the CIELCh color 83, 11.790, 68.938 by changing the saturation by 10% instead.

 83, 11.790, 68.938

 83, 11.790, 68.938

 100, 11.790,
68.938

 73, 11.790, 68.938

 63, 11.790, 68.938

 53, 11.790, 68.938

 43, 11.790, 68.938

 33, 11.790, 68.938

 23, 11.790, 68.938

 13, 11.790, 68.938

 3, 11.790, 68.938

 0, 11.790, 68.938

83, 11.790, 68.938

83, 11.790, 68.938

79, 19.427, 67.793

87, 4.551, 70.061

76, 27.486, 66.631

90, 2.325, 251.497

73, 35.965, 65.475

94, 8.876, 252.491

70, 44.813, 64.317

97, 9.684, 209.240

66, 53.877, 63.124

98, 10.719,
198.791

64, 62.800, 61.798

61, 70.864, 60.125

58, 76.954, 57.736

57, 78.776, 56.879

Harmonies

Complementary

The Complementary color scheme is a pair of colors which are on the opposite of each other on the color wheel.



83, 11.790, 68.938



82, 11.171, 253.164

Rectangle

The Rectangle color scheme consists of four colors that form a rectangle on the color wheel.



83, 11.790, 68.938



83, 11.790, 118.938



83, 11.790, 248.938



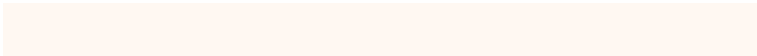
83, 11.790, 298.938

Sweetspot

The Sweet Spot groups the original color and five complimentary colors.



83, 11.790, 68.951



98, 3.838, 70.209



79, 17.402, 342.394



52, 2.624, 70.143



0, 0.000, 0.000



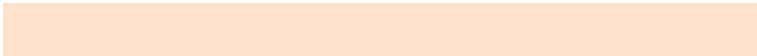
53, 0.007, 296.813

Same Dimension

The Same Dimension uses a secret algorithm to generate beautiful new colors.



83, 11.790, 68.951



92, 15.999, 68.539



88, 18.258, 106.430



45, 3.978, 69.755



46, 65.650, 57.529



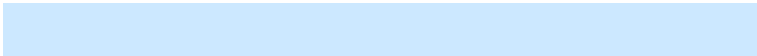
11, 19.700, 55.710

Inverse Universe

The Inverse Universe completely reimagines the original color for something new.



82, 11.171, 253.164



91, 14.961, 253.726



77, 18.891, 289.991



45, 3.867, 252.161



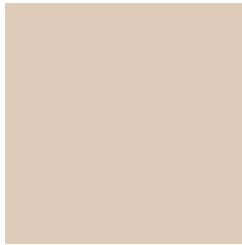
40, 50.206, 279.621



9, 17.726, 269.996

Previews

White Background



This preview shows how the CIELCh color 83, 11.790, 68.938 looks on a white background.

Color Contrast Check

Large Text (above 18pt) WCAG AA × Fail

Any Text WCAG AA × Fail

Large Text (above 18pt) WCAG AAA × Fail

Any Text WCAG AAA × Fail

Black Background



This preview shows how the CIELCh color 83, 11.790, 68.938 looks on a black background.

Color Contrast Check

Large Text (above 18pt) WCAG AA ✓ Pass

Any Text WCAG AA ✓ Pass

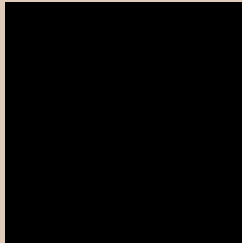
Large Text (above 18pt) WCAG AAA ✓ Pass

Any Text WCAG AAA ✓ Pass

If you want to check with other color combinations, try the [Color Contrast Checker](#).

CIELCh 83, 11.790, 68.938

Background



This preview shows how black text looks on a background with the CIELCh color 83, 11.790, 68.938.



This preview shows how white text looks on a background with the CIELCh color 83, 11.790, 68.938.

Color Blindness Simulation

Color vision deficiency is a very complex topic, and I could not describe the different causes any better than Wikipedia does, so if you want to learn more, you should check out their [article about color blindness](#).

Dichromacy



Original Color

83, 11.790, 68.938

Protanopia

83, 10.057, 89.534

Deuteranopia

83, 14.921, 45.197



Tritanopia
83, 13.267, 340.938

Trichromacy



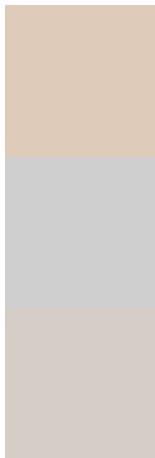
Original Color
83, 11.790, 68.938

Protanomaly
83, 10.683, 81.775

Deuteranomaly
83, 13.385, 53.311

Tritanomaly
83, 9.499, 7.311

Monochromacy



Original Color
83, 11.790, 68.938

Achromatopsia
83, 0.010, 296.813

Achromatomaly
83, 4.488, 74.538

CSS Examples

Text

The CSS property to change the color of the text to CIELCh 83, 11.790, 68.938 is called "color". The color property can be set on classes, ids or directly on the HTML element.

This example shows how text in the color `rgb(223, 203, 186)` looks like.

```
.text, #text, p{  
    color:rgb(223, 203, 186)  
}
```

If you want to add a text shadow in that color use the text-shadow property, you can generate a text shadow directly with our [CSS Text Shadow Generator](#).

Here you see how black text with a 4 pixel rgb(223, 203, 186) colored shadow looks like.

```
.shadow{ text-shadow: 4px 4px 2px rgb(223, 203, 186) }
```

Border

The CSS property to change the border of an element to CIELCh 83, 11.790, 68.938 is called "border". The border property can be set on classes, ids or directly on the HTML element.

This example shows the color as border, it can be applied via the CSS property "border" or "border-color".

```
.border, #border, table{ border:4px solid rgb(223, 203, 186) }
```

If only the border color should be changed use the property `border-color`.

```
.border{ border-color:rgb(223, 203, 186) }
```

If you want to add a box shadow in that color use:

Here you see how a box with a 4 pixel `rgb(223, 203, 186)` colored shadow looks like.

```
.boxshadow{ -moz-box-shadow:4px 4px 4px 4px rgb(223, 203, 186); -webkit-box-shadow:4px 4px 4px 4px rgb(223, 203, 186); box-shadow:4px 4px 4px 4px rgb(223, 203, 186) }
```

Background

The CSS property to change the background color of an element to CIELCh 83, 11.790, 68.938 is called "background". The background property can be set on classes, ids or directly on the HTML element.

```
.background, #background, body{  
background: rgb(223, 203, 186) }
```

If only the background color should be changed can be used:

```
.background{ background-color: rgb(223,  
203, 186) }
```

This example shows the color as background, it is applied via the CSS property "background".

To optimize and compress your CSS code, you can use our [online CSS compressor and optimizer](#) based on csstidy. If you want to create a linear or radial gradient as background or border, check our [CSS Gradient Generator](#).

Hey! You found this booklet interesting? Support Converting Colors with the new Membership Option!

The pro membership hides all ads, plus gives you double the colors in the color bucket, and more awesome pro features!

[Learn more, Memberships starting at \\$2.50/m!](#)

**Follow me
on Twitter!**

@ConvertingColor