

Converting Colors

CIELCh(83, 12.288, 20.328)

Have a look what the booklet for
CIELCh(83, 12.288, 20.328) contains.

CIELCh(83, 12.402, 20.324)	3
<i>Conversions</i>	4
<i>Details</i>	6
<i>Harmonies</i>	11
<i>Previews</i>	20
<i>Color Blindness Simulation</i>	23
<i>CSS Examples</i>	26

Color

CIELCh(83, 12.402, 20.324)

Conversions

Conversions Part 1

Format	Color
Hex	E8C7C7
RGB	232, 199, 199
RGB Percent	91%, 78%, 78%
CMY	0.0900, 0.2194, 0.2194
CMYK	0.00, 0.14, 0.14, 0.09
HSL	0°, 42%, 85%
HSV	0°, 14%, 91%
XYZ	64.0477, 62.1629, 62.6888
YIQ	208.8670, 19.6680, 6.9960

Conversions

Conversions Part 2

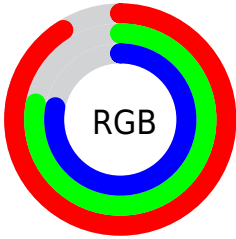
Format	Color
R _Y B	232, 199, 199
Decimal	15255495
CIE Lab	83.00, 11.63, 4.31
CIE LCh	83, 12.402, 20.324
Yxy	62.1629, 0.3391, 0.3291
Android (android.graphics.Color)	4293445575 (0xFFE8C7C7)
YUV	208.8670, -4.8644, 20.2876
Hunter-Lab	78.8435, 7.0265, 8.0487

Details

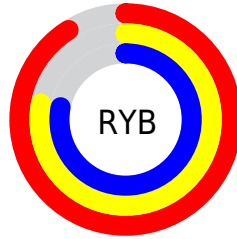
The CIELCh color **83, 12.402, 20.324** is a light color, and the websafe version is hex **FFCCCC**. A complement of this color would be **90, 11.313, 198.706**, and the grayscale version is **84, 0.010, 296.813**.

A 20% lighter version of the original color is **100, 0.012, 296.813**, and **63, 12.418, 20.591** is the 20% darker color. If you saturate the color by 10%, you get **77, 21.964, 21.277**, and if you desaturate by 10%, it is **89, 3.538, 19.498**.

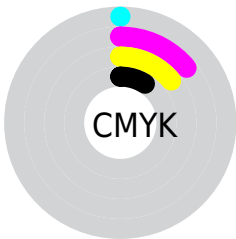
Distribution



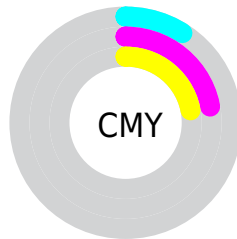
- Red (91%)
- Green (78%)
- Blue (78%)



- Red (91%)
- Yellow (78%)
- Blue (78%)



- Cyan (0%)
- Magenta (14%)
- Yellow (14%)
- Black (9%)



- Cyan (9%)
- Magenta (22%)
- Yellow (22%)


Brightness & Saturation Gradients

These gradients show how the CIELCh color 83, 12.402, 20.324 changes by changing the brightness by 10 percent. The first figure shows a shift by +10% for each color and the second figure -10%.

Similar to the brightness gradients but the following saturation gradients show a change of the CIELCh color 83, 12.402, 20.324 by changing the saturation by 10% instead.

 83, 12.402, 20.324

 83, 12.402, 20.324

 100, 12.402,
20.324

 73, 12.402, 20.324

 63, 12.402, 20.324

 53, 12.402, 20.324

 43, 12.402, 20.324

 33, 12.402, 20.324

 23, 12.402, 20.324

 13, 12.402, 20.324

 3, 12.402, 20.324

 0, 12.402, 20.324

83, 12.402, 20.324

83, 12.402, 20.324

77, 21.964, 21.277

89, 3.538, 19.498

71, 32.214, 22.489

96, 4.653, 199.251

65, 43.060, 24.073

98, 7.837, 198.994

60, 54.312, 26.141

56, 65.667, 28.795

53, 76.700, 32.050

50, 86.747, 35.648

49, 94.374, 38.730

48, 97.376, 40.001

Harmonies

Complementary

The Complementary color scheme is a pair of colors which are on the opposite of each other on the color wheel.



83, 12.402, 20.324



90, 11.313, 198.706

Rectangle

The Rectangle color scheme consists of four colors that form a rectangle on the color wheel.



83, 12.402, 20.324



83, 12.402, 70.324



83, 12.402, 200.324



83, 12.402, 250.324

Sweetspot

The Sweet Spot groups the original color and five complimentary colors.



83, 12.400, 20.334



97, 3.616, 19.477



84, 21.034, 325.211



51, 2.578, 19.554



0, 0.000, 0.000



53, 0.007, 296.813

Same Dimension

The Same Dimension uses a secret algorithm to generate beautiful new colors.



83, 12.400, 20.334



88, 16.184, 20.583



87, 10.603, 73.635



46, 4.904, 19.947



38, 80.845, 39.987



7, 28.533, 22.722

Inverse Universe

The Inverse Universe completely reimagines the original color for something new.



90, 11.313, 198.706



97, 14.476, 198.552



85, 10.228, 257.397



48, 4.619, 198.979



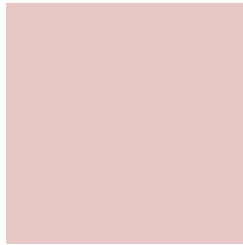
67, 38.745, 196.406



19, 16.592, 196.404

Previews

White Background



This preview shows how the CIELCh color 83, 12.402, 20.324 looks on a white background.

Color Contrast Check

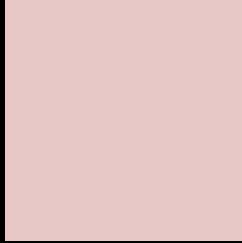
Large Text (above 18pt) WCAG AA × Fail

Any Text WCAG AA × Fail

Large Text (above 18pt) WCAG AAA × Fail

Any Text WCAG AAA × Fail

Black Background



This preview shows how the CIE LCh color 83, 12.402, 20.324 looks on a black background.

Color Contrast Check

Large Text (above 18pt) WCAG AA ✓ Pass

Any Text WCAG AA ✓ Pass

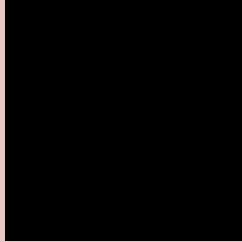
Large Text (above 18pt) WCAG AAA ✓ Pass

Any Text WCAG AAA ✓ Pass

If you want to check with other color combinations, try the [Color Contrast Checker](#).

CIELCh 83, 12.402, 20.324

Background



This preview shows how black text looks on a background with the CIELCh color 83, 12.402, 20.324.

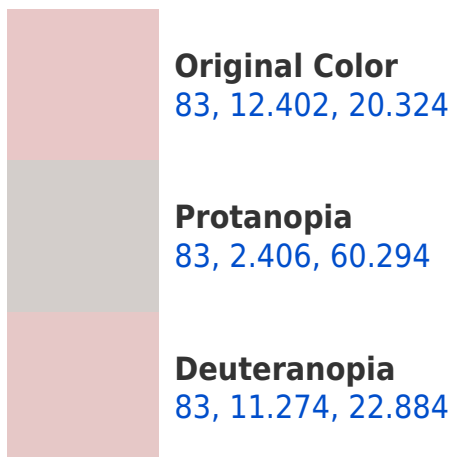


This preview shows how white text looks on a background with the CIELCh color 83, 12.402, 20.324.

Color Blindness Simulation

Color vision deficiency is a very complex topic, and I could not describe the different causes any better than Wikipedia does, so if you want to learn more, you should check out their [article about color blindness](#).

Dichromacy





Tritanopia
83, 15.729, 350.547

Trichromacy



Original Color
83, 12.402, 20.324

Protanomaly
83, 5.945, 24.832

Deuteranomaly
83, 11.657, 22.827

Tritanomaly
83, 13.806, 0.461

Monochromacy



Original Color
83, 12.402, 20.324

Achromatopsia
84, 0.010, 296.813

Achromatomaly
83, 4.412, 19.611

CSS Examples

Text

The CSS property to change the color of the text to CIELCh 83, 12.402, 20.324 is called "color". The color property can be set on classes, ids or directly on the HTML element.

This example shows how text in the color `rgb(232, 199, 199)` looks like.

```
.text, #text, p{  
    color:rgb(232, 199, 199)  
}
```

If you want to add a text shadow in that color use the text-shadow property, you can generate a text shadow directly with our [CSS Text Shadow Generator](#).

Here you see how black text with a 4 pixel rgb(232, 199, 199) colored shadow looks like.

```
.shadow{ text-shadow: 4px 4px 2px rgb(232, 199, 199) }
```

Border

The CSS property to change the border of an element to CIELCh 83, 12.402, 20.324 is called "border". The border property can be set on classes, ids or directly on the HTML element.

This example shows the color as border, it can be applied via the CSS property "border" or "border-color".

```
.border, #border, table{ border:4px solid rgb(232, 199, 199) }
```

If only the border color should be changed use the property `border-color`.

```
.border{ border-color:rgb(232, 199, 199) }
```

If you want to add a box shadow in that color use:

Here you see how a box with a 4 pixel `rgb(232, 199, 199)` colored shadow looks like.

```
.boxshadow{ -moz-box-shadow:4px 4px 4px  
4px rgb(232, 199, 199); -webkit-box-  
shadow:4px 4px 4px 4px rgb(232, 199, 199);  
box-shadow:4px 4px 4px 4px rgb(232, 199,  
199) }
```

Background

The CSS property to change the background color of an element to CIELCh 83, 12.402, 20.324 is called "background". The background property can be set on classes, ids or directly on the HTML element.

```
.background, #background, body{  
background: rgb(232, 199, 199) }
```

If only the background color should be changed can be used:

```
.background{ background-color: rgb(232,  
199, 199) }
```

This example shows the color as background, it is applied via the CSS property "background".

To optimize and compress your CSS code, you can use our [online CSS compressor and optimizer](#) based on csstidy. If you want to create a linear or radial gradient as background or border, check our [CSS Gradient Generator](#).

Hey! You found this booklet interesting? Support Converting Colors with the new Membership Option!

The pro membership hides all ads, plus gives you double the colors in the color bucket, and more awesome pro features!

[Learn more, Memberships starting at \\$2.50/m!](#)

**Follow me
on Twitter!**

@ConvertingColor