

# Converting Colors

CIELCh(83, 13.542, 70.534)

Have a look what the booklet for  
CIELCh(83, 13.542, 70.534) contains.

<b>CIELCh(83, 13.542, 70.534)</b> .....	3
<i><b>Conversions</b></i> .....	4
<i><b>Details</b></i> .....	6
<i><b>Harmonies</b></i> .....	11
<i><b>Previews</b></i> .....	20
<i><b>Color Blindness Simulation</b></i> .....	23
<i><b>CSS Examples</b></i> .....	26

# Color

**CIELCh(83, 13.542, 70.534)**

# Conversions

## Conversions Part 1

Format	Color
Hex	E1CBB7
RGB	225, 203, 183
RGB Percent	88%, 80%, 72%
CMY	0.1175, 0.2038, 0.2822
CMYK	0.00, 0.10, 0.19, 0.12
HSL	29°, 41%, 80%
HSV	29°, 19%, 88%
XYZ	60.9784, 62.1629, 53.6038
YIQ	207.2980, 19.5320, -1.5560

# Conversions

## Conversions Part 2

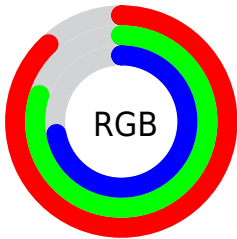
<b>Format</b>	<b>Color</b>
R <sub>Y</sub> B	225, 221, 183
Decimal	14797751
CIE Lab	83.00, 4.51, 12.77
CIE LCh	83, 13.542, 70.534
Yxy	62.1629, 0.3450, 0.3517
Android (android.graphics.Color)	4292987831 (0xFFE1CBB7)
YUV	207.2980, -11.9789, 15.5247
Hunter-Lab	78.8435, 0.0778, 14.8806

# Details

The CIELCh color  $83, 13.542, 70.534$  is a light color, and the websafe version is hex `CCCCCC`. A complement of this color would be  $81, 12.801, 255.429$ , and the grayscale version is  $83, 0.010, 296.813$ .

A 20% lighter version of the original color is  $100, 8.099, 109.562$ , and  $63, 13.472, 71.240$  is the 20% darker color. If you saturate the color by 10%, you get  $80, 21.344, 69.345$ , and if you desaturate by 10%, it is  $86, 6.127, 71.711$ .

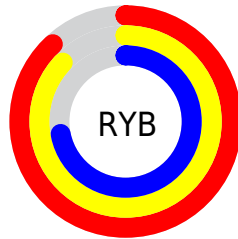
# Distribution



Red (88%)

Green (80%)

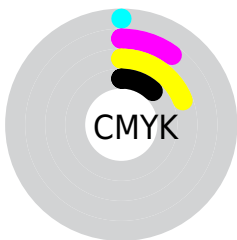
Blue (72%)



Red (88%)

Yellow (87%)

Blue (72%)

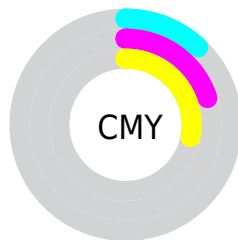


Cyan (0%)

Magenta (10%)

Yellow (19%)

Black (12%)



Cyan (12%)

Magenta (20%)

Yellow (28%)

# Brightness & Saturation Gradients


These gradients show how the CIELCh color 83, 13.542, 70.534 changes by changing the brightness by 10 percent. The first figure shows a shift by +10% for each color and the second figure -10%.

Similar to the brightness gradients but the following saturation gradients show a change of the CIELCh color 83, 13.542, 70.534 by changing the saturation by 10% instead.



 83, 13.542, 70.534

 83, 13.542, 70.534

 100, 13.542,  
70.534

 73, 13.542, 70.534

 63, 13.542, 70.534

 53, 13.542, 70.534

 43, 13.542, 70.534

 33, 13.542, 70.534

 23, 13.542, 70.534

 13, 13.542, 70.534

 3, 13.542, 70.534

 0, 13.542, 70.534

83, 13.542, 70.534

83, 13.542, 70.534

80, 21.344, 69.345

86, 6.127, 71.711

76, 29.550, 68.136

90, 0.931, 253.420

73, 38.145, 66.925

94, 7.668, 254.182

70, 47.057, 65.699

97, 8.818, 215.237

67, 56.088, 64.413

98, 10.160,  
198.829

64, 64.809, 62.952

61, 72.399, 61.075

59, 77.903, 58.490

59, 78.600, 58.157

# Harmonies

# Complementary

The Complementary color scheme is a pair of colors which are on the opposite of each other on the color wheel.



83, 13.542, 70.534



81, 12.801, 255.429

# Rectangle

The Rectangle color scheme consists of four colors that form a rectangle on the color wheel.



83, 13.542, 70.534



83, 13.542, 120.534



83, 13.542, 250.534



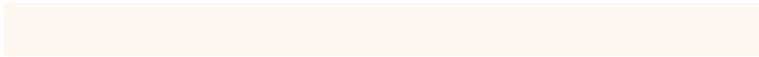
83, 13.542, 300.534

# Sweetspot

The Sweet Spot groups the original color and five complimentary colors.



83, 13.542, 70.546



98, 4.663, 71.994



79, 19.537, 343.460



52, 3.099, 71.925



0, 0.000, 0.000



53, 0.007, 296.813

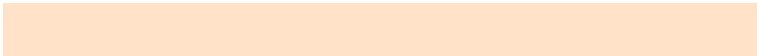


# Same Dimension

The Same Dimension uses a secret algorithm to generate beautiful new colors.



83, 13.542, 70.546



91, 17.826, 70.128



88, 21.022, 106.958



45, 4.014, 71.624



46, 65.143, 58.827



11, 19.662, 57.570



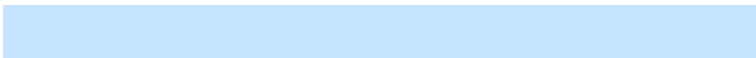


# Inverse Universe

The Inverse Universe completely reimagines the original color for something new.



81, 12.801, 255.429



89, 16.650, 256.009



76, 21.883, 290.957



45, 3.913, 254.076



39, 51.943, 281.461

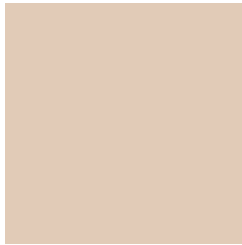


8, 18.227, 271.987



# Previews

## White Background



This preview shows how the CIELCh color 83, 13.542, 70.534 looks on a white background.

## Color Contrast Check

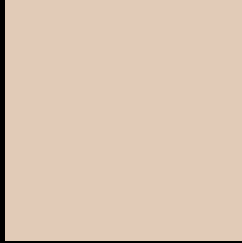
Large Text (above 18pt) WCAG AA × Fail

Any Text WCAG AA × Fail

Large Text (above 18pt) WCAG AAA × Fail

Any Text WCAG AAA × Fail

# Black Background



This preview shows how the CIELCh color 83, 13.542, 70.534 looks on a black background.

## Color Contrast Check

Large Text (above 18pt) WCAG AA ✓ Pass

Any Text WCAG AA ✓ Pass

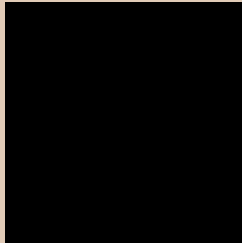
Large Text (above 18pt) WCAG AAA ✓ Pass

Any Text WCAG AAA ✓ Pass

If you want to check with other color combinations, try the [Color Contrast Checker](#).

# CIELCh 83, 13.542, 70.534

## Background



This preview shows how black text looks on a background with the CIELCh color 83, 13.542, 70.534.



This preview shows how white text looks on a background with the CIELCh color 83, 13.542, 70.534.

# Color Blindness Simulation

Color vision deficiency is a very complex topic, and I could not describe the different causes any better than Wikipedia does, so if you want to learn more, you should check out their [article about color blindness](#).

## Dichromacy



### Original Color

83, 13.542, 70.534

### Protanopia

83, 11.680, 90.168

### Deuteranopia

83, 16.083, 49.510



**Tritanopia**  
83, 13.534, 344.738



# Trichromacy



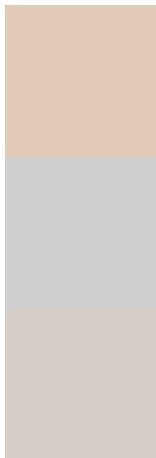
**Original Color**  
83, 13.542, 70.534

**Protanomaly**  
83, 12.282, 83.349

**Deuteranomaly**  
83, 14.691, 54.918

**Tritanomaly**  
83, 10.539, 11.587

# Monochromacy



**Original Color**  
83, 13.542, 70.534

**Achromatopsia**  
83, 0.010, 296.813

**Achromatomaly**  
83, 5.136, 74.438

# CSS Examples

## Text

The CSS property to change the color of the text to CIELCh 83, 13.542, 70.534 is called "color". The color property can be set on classes, ids or directly on the HTML element.

This example shows how text in the color `rgb(225, 203, 183)` looks like.

```
.text, #text, p{  
    color:rgb(225, 203, 183)  
}
```

If you want to add a text shadow in that color use the text-shadow property, you can generate a text shadow directly with our [CSS Text Shadow Generator](#).

Here you see how black text with a 4 pixel rgb(225, 203, 183) colored shadow looks like.

```
.shadow{ text-shadow: 4px 4px 2px rgb(225, 203, 183) }
```

## Border

The CSS property to change the border of an element to CIELCh 83, 13.542, 70.534 is called "border". The border property can be set on classes, ids or directly on the HTML element.

This example shows the color as border, it can be applied via the CSS property "border" or "border-color".

```
.border, #border, table{ border:4px solid rgb(225, 203, 183) }
```

If only the border color should be changed use the property border-color.

```
.border{ border-color:rgb(225, 203, 183) }
```

If you want to add a box shadow in that color use:

Here you see how a box with a 4 pixel rgb(225, 203, 183) colored shadow looks like.

```
.boxshadow{ -moz-box-shadow:4px 4px 4px  
4px rgb(225, 203, 183); -webkit-box-  
shadow:4px 4px 4px 4px rgb(225, 203, 183);  
box-shadow:4px 4px 4px 4px rgb(225, 203,  
183) }
```

# Background

The CSS property to change the background color of an element to CIELCh 83, 13.542, 70.534 is called "background". The background property can be set on classes, ids or directly on the HTML element.

```
.background, #background, body{  
background: rgb(225, 203, 183) }
```

If only the background color should be changed can be used:

```
.background{ background-color: rgb(225,  
203, 183) }
```

This example shows the color as background, it is applied via the CSS property "background".

To optimize and compress your CSS code, you can use our [online CSS compressor and optimizer](#) based on csstidy. If you want to create a linear or radial gradient as background or border, check our [CSS Gradient Generator](#).

Hey! You found this booklet interesting? Support Converting Colors with the new Membership Option!

The pro membership hides all ads, plus gives you double the colors in the color bucket, and more awesome pro features!

**[Learn more, Memberships starting at \\$2.50/m!](#)**

**Follow me  
on Twitter!**

@ConvertingColor