

Converting Colors

CIELCh(83, 14.034, 56.734)

Have a look what the booklet for
CIELCh(83, 14.034, 56.734) contains.

CIELCh(83, 14.034, 56.734)	3
<i>Conversions</i>	4
<i>Details</i>	6
<i>Harmonies</i>	11
<i>Previews</i>	20
<i>Color Blindness Simulation</i>	23
<i>CSS Examples</i>	26

Color

CIELCh(83, 14.034, 56.734)

Conversions

Conversions Part 1

Format	Color
Hex	E6C9B9
RGB	230, 201, 185
RGB Percent	90%, 79%, 73%
CMY	0.0977, 0.2114, 0.2741
CMYK	0.00, 0.13, 0.20, 0.10
HSL	21°, 47%, 81%
HSV	21°, 20%, 90%
XYZ	62.3396, 62.1629, 54.6633
YIQ	207.8470, 22.4200, 1.1720

Conversions

Conversions Part 2

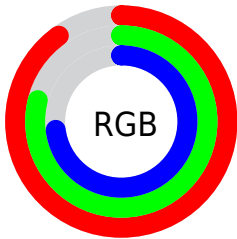
Format	Color
R _Y B	230, 210, 185
Decimal	15124921
CIE Lab	83.00, 7.70, 11.73
CIE LCh	83, 14.034, 56.734
Yxy	62.1629, 0.3479, 0.3470
Android (android.graphics.Color)	4293315001 (0xFFE6C9B9)
YUV	207.8470, -11.2636, 19.4282
Hunter-Lab	78.8435, 3.1596, 14.0839

Details

The CIELCh color $83, 14.034, 56.734$ is a light color, and the websafe version is hex `FFCCCC`. A complement of this color would be $84, 12.722, 240.642$, and the grayscale version is $83, 0.010, 296.813$.

A 20% lighter version of the original color is $100, 7.086, 109.637$, and $63, 14.003, 56.585$ is the 20% darker color. If you saturate the color by 10%, you get $79, 21.980, 55.959$, and if you desaturate by 10%, it is $87, 6.623, 57.550$.

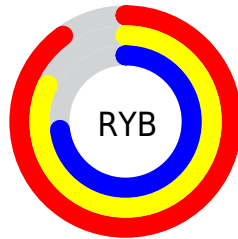
Distribution



Red (90%)

Green (79%)

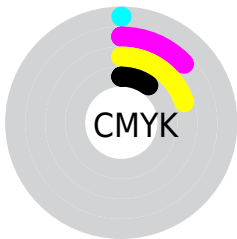
Blue (73%)



Red (90%)

Yellow (82%)

Blue (73%)

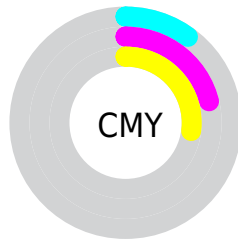


Cyan (0%)

Magenta (13%)

Yellow (20%)

Black (10%)



Cyan (10%)

Magenta (21%)

Yellow (27%)


Brightness & Saturation Gradients

These gradients show how the CIELCh color 83, 14.034, 56.734 changes by changing the brightness by 10 percent. The first figure shows a shift by +10% for each color and the second figure -10%.

Similar to the brightness gradients but the following saturation gradients show a change of the CIELCh color 83, 14.034, 56.734 by changing the saturation by 10% instead.

 83, 14.034, 56.734

 83, 14.034, 56.734

 100, 14.034,
56.734

 73, 14.034, 56.734

 63, 14.034, 56.734

 53, 14.034, 56.734

 43, 14.034, 56.734

 33, 14.034, 56.734

 23, 14.034, 56.734

 13, 14.034, 56.734

 3, 14.034, 56.734

 0, 14.034, 56.734

83, 14.034, 56.734

83, 14.034, 56.734

79, 21.980, 55.959

87, 6.623, 57.550

75, 30.497, 55.229

92, 0.302, 240.249

71, 39.594, 54.570

96, 6.792, 239.475

67, 49.222, 53.981

98, 8.489, 198.947

64, 59.210, 53.422

60, 69.139, 52.765

58, 78.106, 51.707

55, 84.988, 49.926

55, 85.283, 49.860

Harmonies

Complementary

The Complementary color scheme is a pair of colors which are on the opposite of each other on the color wheel.



83, 14.034, 56.734



84, 12.722, 240.642

Rectangle

The Rectangle color scheme consists of four colors that form a rectangle on the color wheel.



83, 14.034, 56.734



83, 14.034, 106.734



83, 14.034, 236.734



83, 14.034, 286.734

Sweetspot

The Sweet Spot groups the original color and five complimentary colors.



83, 14.034, 56.746



97, 4.463, 57.808



80, 22.575, 337.825



52, 2.967, 57.764



0, 0.000, 0.000



53, 0.007, 296.813

Same Dimension

The Same Dimension uses a secret algorithm to generate beautiful new colors.



83, 14.034, 56.746



89, 18.166, 56.460



89, 19.970, 101.079



46, 3.925, 57.558



43, 70.113, 50.473



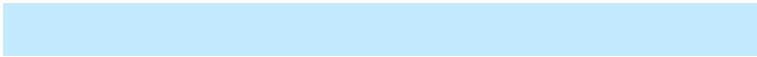
10, 21.661, 45.624

Inverse Universe

The Inverse Universe completely reimagines the original color for something new.



84, 12.722, 240.642



91, 16.140, 241.132



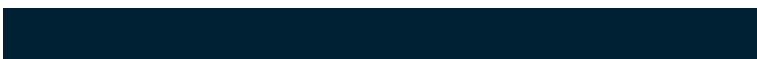
78, 20.557, 285.710



46, 3.757, 239.470



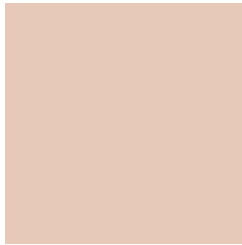
46, 41.249, 265.612



11, 15.726, 256.138

Previews

White Background



This preview shows how the CIELCh color 83, 14.034, 56.734 looks on a white background.

Color Contrast Check

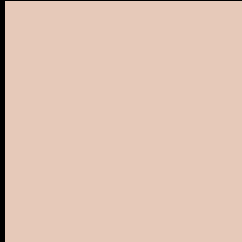
Large Text (above 18pt) WCAG AA × Fail

Any Text WCAG AA × Fail

Large Text (above 18pt) WCAG AAA × Fail

Any Text WCAG AAA × Fail

Black Background



This preview shows how the CIELCh color 83, 14.034, 56.734 looks on a black background.

Color Contrast Check

Large Text (above 18pt) WCAG AA ✓ Pass

Any Text WCAG AA ✓ Pass

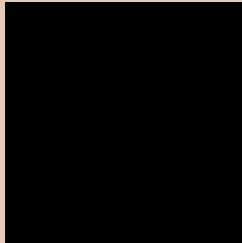
Large Text (above 18pt) WCAG AAA ✓ Pass

Any Text WCAG AAA ✓ Pass

If you want to check with other color combinations, try the [Color Contrast Checker](#).

CIELCh 83, 14.034, 56.734

Background



This preview shows how black text looks on a background with the CIELCh color 83, 14.034, 56.734.



This preview shows how white text looks on a background with the CIELCh color 83, 14.034, 56.734.

Color Blindness Simulation

Color vision deficiency is a very complex topic, and I could not describe the different causes any better than Wikipedia does, so if you want to learn more, you should check out their [article about color blindness](#).

Dichromacy



Original Color

83, 14.034, 56.734

Protanopia

83, 10.057, 89.534

Deuteranopia

83, 15.802, 47.929



Tritanopia
83, 15.729, 350.547

Trichromacy



Original Color
83, 14.034, 56.734

Protanomaly
83, 10.831, 75.145

Deuteranomaly
83, 15.039, 51.674

Tritanomaly
83, 13.252, 11.311

Monochromacy



Original Color
83, 14.034, 56.734

Achromatopsia
83, 0.010, 296.813

Achromatomaly
83, 4.838, 52.477

CSS Examples

Text

The CSS property to change the color of the text to CIELCh 83, 14.034, 56.734 is called "color". The color property can be set on classes, ids or directly on the HTML element.

This example shows how text in the color `rgb(230, 201, 185)` looks like.

```
.text, #text, p{  
    color:rgb(230, 201, 185)  
}
```

If you want to add a text shadow in that color use the text-shadow property, you can generate a text shadow directly with our [CSS Text Shadow Generator](#).

Here you see how black text with a 4 pixel rgb(230, 201, 185) colored shadow looks like.

```
.shadow{ text-shadow: 4px 4px 2px rgb(230, 201, 185) }
```

Border

The CSS property to change the border of an element to CIELCh 83, 14.034, 56.734 is called "border". The border property can be set on classes, ids or directly on the HTML element.

This example shows the color as border, it can be applied via the CSS property "border" or "border-color".

```
.border, #border, table{ border:4px solid rgb(230, 201, 185) }
```

If only the border color should be changed use the property border-color.

```
.border{ border-color:rgb(230, 201, 185) }
```

If you want to add a box shadow in that color use:

Here you see how a box with a 4 pixel rgb(230, 201, 185) colored shadow looks like.

```
.boxshadow{ -moz-box-shadow:4px 4px 4px  
4px rgb(230, 201, 185); -webkit-box-  
shadow:4px 4px 4px 4px rgb(230, 201, 185);  
box-shadow:4px 4px 4px 4px rgb(230, 201,  
185) }
```

Background

The CSS property to change the background color of an element to CIELCh 83, 14.034, 56.734 is called "background". The background property can be set on classes, ids or directly on the HTML element.

```
.background, #background, body{  
background: rgb(230, 201, 185) }
```

If only the background color should be changed can be used:

```
.background{ background-color: rgb(230,  
201, 185) }
```

This example shows the color as background, it is applied via the CSS property "background".

To optimize and compress your CSS code, you can use our [online CSS compressor and optimizer](#) based on csstidy. If you want to create a linear or radial gradient as background or border, check our [CSS Gradient Generator](#).

Hey! You found this booklet interesting? Support Converting Colors with the new Membership Option!

The pro membership hides all ads, plus gives you double the colors in the color bucket, and more awesome pro features!

[Learn more, Memberships starting at \\$2.50/m!](#)

**Follow me
on Twitter!**

@ConvertingColor