

# Converting Colors

CIELCh(83, 15.207, 64.298)

Have a look what the booklet for  
CIELCh(83, 15.207, 64.298) contains.

<b>CIELCh(83, 15.274, 65.990)</b> .....	3
<i><b>Conversions</b></i> .....	4
<i><b>Details</b></i> .....	6
<i><b>Harmonies</b></i> .....	11
<i><b>Previews</b></i> .....	20
<i><b>Color Blindness Simulation</b></i> .....	23
<i><b>CSS Examples</b></i> .....	26

# Color

**CIELCh(83, 15.274, 65.990)**

# Conversions

## Conversions Part 1

Format	Color
Hex	E5CAB5
RGB	229, 202, 181
RGB Percent	90%, 79%, 71%
CMY	0.1024, 0.2082, 0.2906
CMYK	0.00, 0.12, 0.21, 0.10
HSL	26°, 48%, 80%
HSV	26°, 21%, 90%
XYZ	61.7033, 62.1629, 52.4067
YIQ	207.6790, 22.8330, -0.8070

# Conversions

## Conversions Part 2

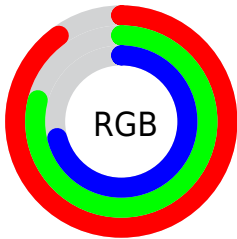
Format	Color
R <sub>Y</sub> B	229, 218, 181
Decimal	15059637
CIE Lab	83.00, 6.21, 13.95
CIE LCh	83, 15.274, 65.990
Yxy	62.1629, 0.3500, 0.3527
Android (android.graphics.Color)	4293249717 (0xFFE5CAB5)
YUV	207.6790, -13.1527, 18.6985
Hunter-Lab	78.8435, 1.7190, 15.7808

# Details

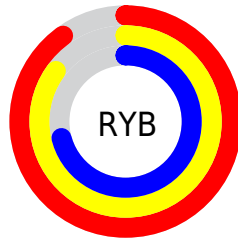
The CIELCh color **83, 15.274, 65.990** is a light color, and the websafe version is hex **FFCCCC**. A complement of this color would be **82, 14.127, 251.239**, and the grayscale version is **83, 0.010, 296.813**.

A 20% lighter version of the original color is **100, 9.112, 109.487**, and **63, 15.326, 66.253** is the 20% darker color. If you saturate the color by 10%, you get **79, 23.232, 64.900**, and if you desaturate by 10%, it is **87, 7.762, 67.091**.

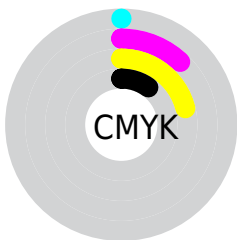
# Distribution



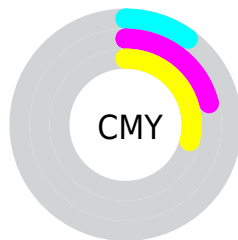
- Red (90%)
- Green (79%)
- Blue (71%)



- Red (90%)
- Yellow (85%)
- Blue (71%)



- Cyan (0%)
- Magenta (12%)
- Yellow (21%)
- Black (10%)



- Cyan (10%)
- Magenta (21%)
- Yellow (29%)

# Brightness & Saturation Gradients


These gradients show how the CIELCh color 83, 15.274, 65.990 changes by changing the brightness by 10 percent. The first figure shows a shift by +10% for each color and the second figure -10%.

Similar to the brightness gradients but the following saturation gradients show a change of the CIELCh color 83, 15.274, 65.990 by changing the saturation by 10% instead.



 83, 15.274, 65.990

 83, 15.274, 65.990

 100, 15.274,  
65.990

 73, 15.274, 65.990

 63, 15.274, 65.990

 53, 15.274, 65.990

 43, 15.274, 65.990

 33, 15.274, 65.990

 23, 15.274, 65.990

 13, 15.274, 65.990

 3, 15.274, 65.990

 0, 15.274, 65.990

83, 15.274, 65.990

83, 15.274, 65.990

79, 23.232, 64.900

87, 7.762, 67.091

76, 31.655, 63.813

91, 0.660, 67.570

72, 40.532, 62.743

94, 6.073, 249.449

69, 49.779, 61.674

98, 8.363, 204.615

66, 59.173, 60.552

98, 8.889, 198.918

63, 68.218, 59.233

60, 75.960, 57.414

58, 81.187, 55.190

# Harmonies

# Complementary

The Complementary color scheme is a pair of colors which are on the opposite of each other on the color wheel.



83, 15.274, 65.990



82, 14.127, 251.239

# Rectangle

The Rectangle color scheme consists of four colors that form a rectangle on the color wheel.



83, 15.274, 65.990



83, 15.274, 115.990



83, 15.274, 245.990



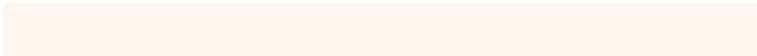
83, 15.274, 295.990

# Sweetspot

The Sweet Spot groups the original color and five complimentary colors.



83, 15.274, 66.001



98, 4.569, 67.593



79, 22.787, 341.943



52, 3.036, 67.530



0, 0.000, 0.000



53, 0.007, 296.813

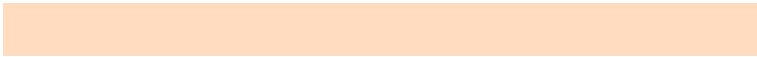


# Same Dimension

The Same Dimension uses a secret algorithm to generate beautiful new colors.



83, 15.274, 66.001



90, 20.124, 65.540



89, 23.159, 105.206



46, 4.011, 67.250



46, 67.093, 55.849



11, 21.060, 53.858





# Inverse Universe

The Inverse Universe completely reimagines the original color for something new.



82, 14.127, 251.239



89, 18.287, 251.943



76, 24.151, 289.873



46, 3.885, 249.587



42, 48.566, 277.096



10, 17.799, 267.878



# Previews

## White Background



This preview shows how the CIELCh color 83, 15.274, 65.990 looks on a white background.

## Color Contrast Check

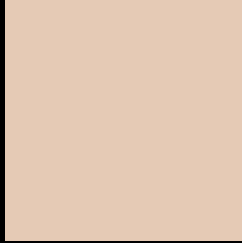
Large Text (above 18pt) WCAG AA × Fail

Any Text WCAG AA × Fail

Large Text (above 18pt) WCAG AAA × Fail

Any Text WCAG AAA × Fail

# Black Background



This preview shows how the CIELCh color 83, 15.274, 65.990 looks on a black background.

## Color Contrast Check

Large Text (above 18pt) WCAG AA ✓ Pass

Any Text WCAG AA ✓ Pass

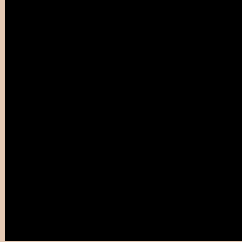
Large Text (above 18pt) WCAG AAA ✓ Pass

Any Text WCAG AAA ✓ Pass

If you want to check with other color combinations, try the [Color Contrast Checker](#).

**CIELCh 83, 15.274, 65.990**

## **Background**



This preview shows how black text looks on a background with the CIELCh color 83, 15.274, 65.990.



This preview shows how white text looks on a background with the CIELCh color 83, 15.274, 65.990.

# Color Blindness Simulation

Color vision deficiency is a very complex topic, and I could not describe the different causes any better than Wikipedia does, so if you want to learn more, you should check out their [article about color blindness](#).

## Dichromacy



### Original Color

83, 15.274, 65.990

### Protanopia

83, 12.684, 91.569

### Deuteranopia

83, 17.331, 53.196



**Tritanopia**  
83, 15.670, 348.138



# Trichromacy



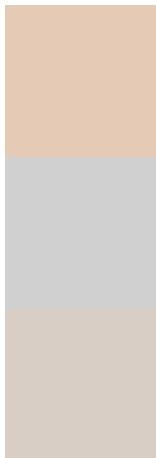
**Original Color**  
83, 15.274, 65.990

**Protanomaly**  
83, 13.583, 82.184

**Deuteranomaly**  
83, 16.340, 57.642

**Tritanomaly**  
83, 12.399, 15.486

# Monochromacy



**Original Color**  
83, 15.274, 65.990

**Achromatopsia**  
83, 0.010, 296.813

**Achromatomaly**  
83, 5.601, 68.157

# CSS Examples

## Text

The CSS property to change the color of the text to CIELCh 83, 15.274, 65.990 is called "color". The color property can be set on classes, ids or directly on the HTML element.

This example shows how text in the color `rgb(229, 202, 181)` looks like.

```
.text, #text, p{  
    color:rgb(229, 202, 181)  
}
```

If you want to add a text shadow in that color use the text-shadow property, you can generate a text shadow directly with our [CSS Text Shadow Generator](#).

Here you see how black text with a 4 pixel rgb(229, 202, 181) colored shadow looks like.

```
.shadow{ text-shadow: 4px 4px 2px rgb(229, 202, 181) }
```

## Border

The CSS property to change the border of an element to CIELCh 83, 15.274, 65.990 is called "border". The border property can be set on classes, ids or directly on the HTML element.

This example shows the color as border, it can be applied via the CSS property "border" or "border-color".

```
.border, #border, table{ border:4px solid rgb(229, 202, 181) }
```

If only the border color should be changed use the property `border-color`.

```
.border{ border-color:rgb(229, 202, 181) }
```

If you want to add a box shadow in that color use:

Here you see how a box with a 4 pixel `rgb(229, 202, 181)` colored shadow looks like.

```
.boxshadow{ -moz-box-shadow:4px 4px 4px  
4px rgb(229, 202, 181); -webkit-box-  
shadow:4px 4px 4px 4px rgb(229, 202, 181);  
box-shadow:4px 4px 4px 4px rgb(229, 202,  
181) }
```

# Background

The CSS property to change the background color of an element to CIELCh 83, 15.274, 65.990 is called "background". The background property can be set on classes, ids or directly on the HTML element.

```
.background, #background, body{  
background: rgb(229, 202, 181) }
```

If only the background color should be changed can be used:

```
.background{ background-color: rgb(229,  
202, 181) }
```

This example shows the color as background, it is applied via the CSS property "background".

To optimize and compress your CSS code, you can use our [online CSS compressor and optimizer](#) based on csstidy. If you want to create a linear or radial gradient as background or border, check our [CSS Gradient Generator](#).

Hey! You found this booklet interesting? Support Converting Colors with the new Membership Option!

The pro membership hides all ads, plus gives you double the colors in the color bucket, and more awesome pro features!

**[Learn more, Memberships starting at \\$2.50/m!](#)**

**Follow me  
on Twitter!**

@ConvertingColor