

Converting Colors

CIELCh(83, 16.316, 20.822)

Have a look what the booklet for
CIELCh(83, 16.316, 20.822) contains.

CIELCh(83, 16.339, 22.477)	3
<i>Conversions</i>	4
<i>Details</i>	6
<i>Harmonies</i>	11
<i>Previews</i>	20
<i>Color Blindness Simulation</i>	23
<i>CSS Examples</i>	26

Color

CIELCh(83, 16.339, 22.477)

Conversions

Conversions Part 1

Format	Color
Hex	F0C5C4
RGB	240, 197, 196
RGB Percent	94%, 77%, 77%
CMY	0.0605, 0.2290, 0.2330
CMYK	0.00, 0.18, 0.18, 0.06
HSL	1°, 59%, 85%
HSV	1°, 18%, 94%
XYZ	65.5798, 62.1629, 60.5225
YIQ	209.7430, 25.9490, 8.8050

Conversions

Conversions Part 2

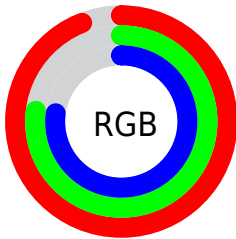
Format	Color
R _Y B	240, 197, 196
Decimal	15779268
CIE Lab	83.00, 15.10, 6.25
CIE LCh	83, 16.339, 22.477
Yxy	62.1629, 0.3483, 0.3302
Android (android.graphics.Color)	4293969348 (0xFFFF0C5C4)
YUV	209.7430, -6.7753, 26.5354
Hunter-Lab	78.8435, 10.4952, 9.6778

Details

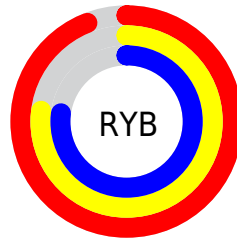
The CIELCh color **83, 16.339, 22.477** is a light color, and the websafe version is hex **FFCCCC**. A complement of this color would be **91, 14.460, 200.567**, and the grayscale version is **84, 0.010, 296.813**.

A 20% lighter version of the original color is **100, 0.604, 74.594**, and **63, 16.231, 22.931** is the 20% darker color. If you saturate the color by 10%, you get **77, 26.254, 23.434**, and if you desaturate by 10%, it is **89, 7.144, 21.727**.

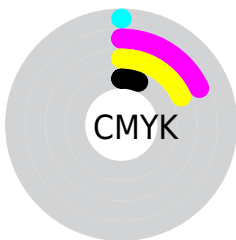
Distribution



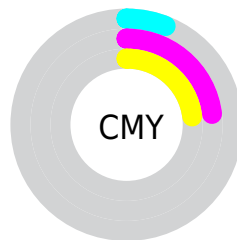
- Red (94%)
- Green (77%)
- Blue (77%)



- Red (94%)
- Yellow (77%)
- Blue (77%)



- Cyan (0%)
- Magenta (18%)
- Yellow (18%)
- Black (6%)



- Cyan (6%)
- Magenta (23%)
- Yellow (23%)


Brightness & Saturation Gradients

These gradients show how the CIELCh color 83, 16.339, 22.477 changes by changing the brightness by 10 percent. The first figure shows a shift by +10% for each color and the second figure -10%.

Similar to the brightness gradients but the following saturation gradients show a change of the CIELCh color 83, 16.339, 22.477 by changing the saturation by 10% instead.

 83, 16.339, 22.477

 83, 16.339, 22.477

 100, 16.339,
22.477

 73, 16.339, 22.477

 63, 16.339, 22.477

 53, 16.339, 22.477

 43, 16.339, 22.477

 33, 16.339, 22.477

 23, 16.339, 22.477

 13, 16.339, 22.477

 3, 16.339, 22.477

 0, 16.339, 22.477

83, 16.339, 22.477

83, 16.339, 22.477

77, 26.254, 23.434

89, 7.144, 21.727

71, 36.865, 24.676

96, 1.347, 201.747

66, 48.062, 26.308

99, 5.308, 199.194

61, 59.634, 28.433

57, 71.247, 31.119

54, 82.397, 34.297

51, 92.136, 37.520

50, 98.606, 39.811

50, 99.468, 40.173

Harmonies

Complementary

The Complementary color scheme is a pair of colors which are on the opposite of each other on the color wheel.



83, 16.339, 22.477



91, 14.460, 200.567

Rectangle

The Rectangle color scheme consists of four colors that form a rectangle on the color wheel.



83, 16.339, 22.477



83, 16.339, 72.477



83, 16.339, 202.477



83, 16.339, 252.477

Sweetspot

The Sweet Spot groups the original color and five complimentary colors.



83, 16.337, 22.485



96, 5.345, 21.552



84, 27.589, 325.896



51, 3.554, 21.603



0, 0.000, 0.000



53, 0.007, 296.813

Same Dimension

The Same Dimension uses a secret algorithm to generate beautiful new colors.



83, 16.337, 22.485



85, 20.902, 22.809



88, 14.328, 74.872



47, 4.881, 21.808



38, 81.385, 40.239



8, 29.335, 25.026

Inverse Universe

The Inverse Universe completely reimagines the original color for something new.



91, 14.460, 200.567



96, 18.007, 200.415



86, 13.723, 259.860



49, 4.593, 200.985



66, 37.927, 200.012



20, 16.628, 199.493

Previews

White Background



This preview shows how the CIELCh color 83, 16.339, 22.477 looks on a white background.

Color Contrast Check

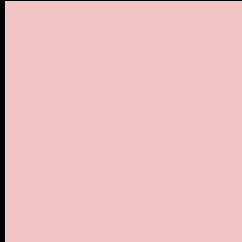
Large Text (above 18pt) WCAG AA × Fail

Any Text WCAG AA × Fail

Large Text (above 18pt) WCAG AAA × Fail

Any Text WCAG AAA × Fail

Black Background



This preview shows how the CIELCh color 83, 16.339, 22.477 looks on a black background.

Color Contrast Check

Large Text (above 18pt) WCAG AA ✓ Pass

Any Text WCAG AA ✓ Pass

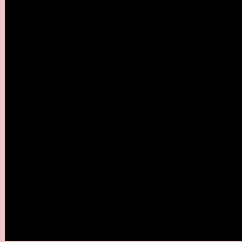
Large Text (above 18pt) WCAG AAA ✓ Pass

Any Text WCAG AAA ✓ Pass

If you want to check with other color combinations, try the [Color Contrast Checker](#).

CIELCh 83, 16.339, 22.477

Background



This preview shows how black text looks on a background with the CIELCh color 83, 16.339, 22.477.

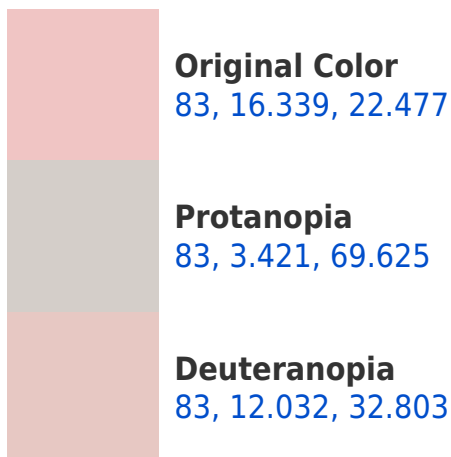


This preview shows how white text looks on a background with the CIELCh color 83, 16.339, 22.477.

Color Blindness Simulation

Color vision deficiency is a very complex topic, and I could not describe the different causes any better than Wikipedia does, so if you want to learn more, you should check out their [article about color blindness](#).

Dichromacy





Tritanopia
83, 19.292, 355.169

Trichromacy



Original Color
83, 16.339, 22.477

Protanomaly
83, 7.392, 36.354

Deuteranomaly
83, 13.446, 29.323

Tritanomaly
83, 17.577, 3.465

Monochromacy



Original Color
83, 16.339, 22.477

Achromatopsia
84, 0.010, 296.813

Achromatomaly
83, 5.908, 19.758

CSS Examples

Text

The CSS property to change the color of the text to CIELCh 83, 16.339, 22.477 is called "color". The color property can be set on classes, ids or directly on the HTML element.

This example shows how text in the color `rgb(240, 197, 196)` looks like.

```
.text, #text, p{  
    color:rgb(240, 197, 196)  
}
```

If you want to add a text shadow in that color use the text-shadow property, you can generate a text shadow directly with our [CSS Text Shadow Generator](#).

Here you see how black text with a 4 pixel rgb(240, 197, 196) colored shadow looks like.

```
.shadow{ text-shadow: 4px 4px 2px rgb(240, 197, 196) }
```

Border

The CSS property to change the border of an element to CIELCh 83, 16.339, 22.477 is called "border". The border property can be set on classes, ids or directly on the HTML element.

This example shows the color as border, it can be applied via the CSS property "border" or "border-color".

```
.border, #border, table{ border:4px solid rgb(240, 197, 196) }
```

If only the border color should be changed use the property `border-color`.

```
.border{ border-color:rgb(240, 197, 196) }
```

If you want to add a box shadow in that color use:

Here you see how a box with a 4 pixel `rgb(240, 197, 196)` colored shadow looks like.

```
.boxshadow{ -moz-box-shadow:4px 4px 4px  
4px rgb(240, 197, 196); -webkit-box-  
shadow:4px 4px 4px 4px rgb(240, 197, 196);  
box-shadow:4px 4px 4px 4px rgb(240, 197,  
196) }
```

Background

The CSS property to change the background color of an element to CIELCh 83, 16.339, 22.477 is called "background". The background property can be set on classes, ids or directly on the HTML element.

```
.background, #background, body{  
background: rgb(240, 197, 196) }
```

If only the background color should be changed can be used:

```
.background{ background-color: rgb(240,  
197, 196) }
```

This example shows the color as background, it is applied via the CSS property "background".

To optimize and compress your CSS code, you can use our [online CSS compressor and optimizer](#) based on csstidy. If you want to create a linear or radial gradient as background or border, check our [CSS Gradient Generator](#).

Hey! You found this booklet interesting? Support Converting Colors with the new Membership Option!

The pro membership hides all ads, plus gives you double the colors in the color bucket, and more awesome pro features!

[Learn more, Memberships starting at \\$2.50/m!](#)

**Follow me
on Twitter!**

@ConvertingColor