

Converting Colors

CIELCh(83, 16.445, 59.914)

Have a look what the booklet for
CIELCh(83, 16.445, 59.914) contains.

CIELCh(83, 16.731, 61.134)	3
<i>Conversions</i>	4
<i>Details</i>	6
<i>Harmonies</i>	11
<i>Previews</i>	20
<i>Color Blindness Simulation</i>	23
<i>CSS Examples</i>	26

Color

CIELCh(83, 16.731, 61.134)

Conversions

Conversions Part 1

Format	Color
Hex	E9C9B4
RGB	233, 201, 180
RGB Percent	91%, 79%, 71%
CMY	0.0876, 0.2131, 0.2954
CMYK	0.00, 0.14, 0.23, 0.09
HSL	24°, 54%, 81%
HSV	24°, 23%, 91%
XYZ	62.5030, 62.1629, 51.7079
YIQ	208.1740, 25.8130, 0.2530

Conversions

Conversions Part 2

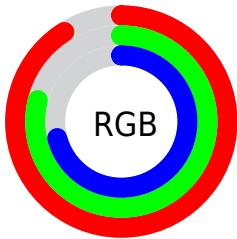
Format	Color
RYP	233, 215, 180
Decimal	15321524
CIELab	83.00, 8.08, 14.65
CIELCh	83, 16.731, 61.134
Yxy	62.1629, 0.3544, 0.3525
Android (android.graphics.Color)	4293511604 (0xFFE9C9B4)
YUV	208.1740, -13.8898, 21.7724
Hunter-Lab	78.8435, 3.5293, 16.3063

Details

The CIELCh color $83, 16.731, 61.134$ is a light color, and the websafe version is hex `FFCCCC`. A complement of this color would be $83, 15.114, 246.381$, and the grayscale version is $83, 0.010, 296.813$.

A 20% lighter version of the original color is $100, 9.618, 109.449$, and $63, 16.900, 61.077$ is the 20% darker color. If you saturate the color by 10%, you get $79, 24.883, 60.193$, and if you desaturate by 10%, it is $87, 9.086, 62.110$.

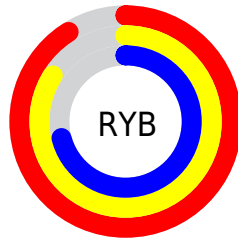
Distribution



Red (91%)

Green (79%)

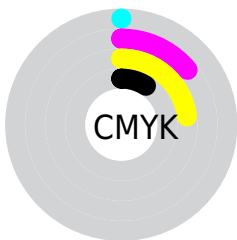
Blue (71%)



Red (91%)

Yellow (84%)

Blue (71%)

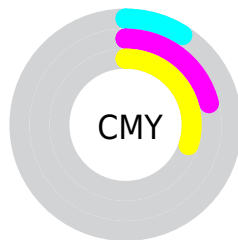


Cyan (0%)

Magenta (14%)

Yellow (23%)

Black (9%)



Cyan (9%)

Magenta (21%)

Yellow (30%)


Brightness & Saturation Gradients

These gradients show how the CIELCh color 83, 16.731, 61.134 changes by changing the brightness by 10 percent. The first figure shows a shift by +10% for each color and the second figure -10%.

Similar to the brightness gradients but the following saturation gradients show a change of the CIELCh color 83, 16.731, 61.134 by changing the saturation by 10% instead.

 83, 16.731, 61.134

 83, 16.731, 61.134

 100, 16.731,
61.134

 73, 16.731, 61.134

 63, 16.731, 61.134

 53, 16.731, 61.134

 43, 16.731, 61.134

 33, 16.731, 61.134

 23, 16.731, 61.134

 13, 16.731, 61.134

 3, 16.731, 61.134

 0, 16.731, 61.134

83, 16.731, 61.134

83, 16.731, 61.134

79, 24.883, 60.193

87, 9.086, 62.110

75, 33.568, 59.280

91, 1.907, 62.911

72, 42.772, 58.411

95, 4.851, 244.289

68, 52.406, 57.568

98, 7.638, 199.009

65, 62.222, 56.687

62, 71.658, 55.596

59, 79.623, 53.932

57, 84.076, 52.320

Harmonies

Complementary

The Complementary color scheme is a pair of colors which are on the opposite of each other on the color wheel.



83, 16.731, 61.134



83, 15.114, 246.381

Rectangle

The Rectangle color scheme consists of four colors that form a rectangle on the color wheel.



83, 16.731, 61.134



83, 16.731, 111.134



83, 16.731, 241.134



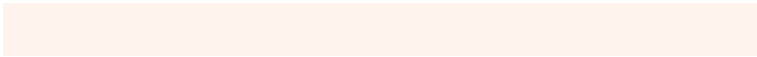
83, 16.731, 291.134

Sweetspot

The Sweet Spot groups the original color and five complimentary colors.



83, 16.731, 61.144



97, 5.266, 62.640



79, 25.959, 339.641



51, 3.428, 62.587



0, 0.000, 0.000



53, 0.007, 296.813

Same Dimension

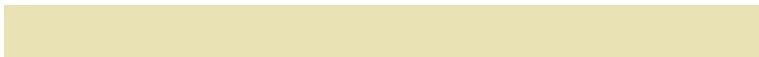
The Same Dimension uses a secret algorithm to generate beautiful new colors.



83, 16.731, 61.144



88, 21.676, 60.726



89, 24.254, 102.524



47, 4.026, 62.422



45, 69.313, 52.953



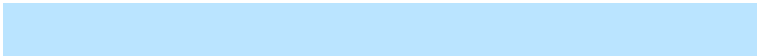
11, 22.575, 50.174

Inverse Universe

The Inverse Universe completely reimagines the original color for something new.



83, 15.114, 246.381



88, 19.155, 247.096



76, 25.224, 287.854



47, 3.875, 244.578



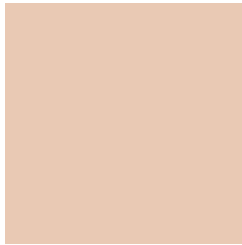
45, 45.173, 271.757



11, 17.300, 262.847

Previews

White Background



This preview shows how the CIELCh color 83, 16.731, 61.134 looks on a white background.

Color Contrast Check

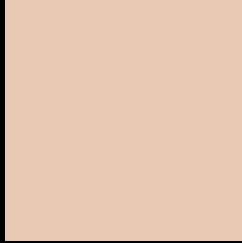
Large Text (above 18pt) WCAG AA × Fail

Any Text WCAG AA × Fail

Large Text (above 18pt) WCAG AAA × Fail

Any Text WCAG AAA × Fail

Black Background



This preview shows how the CIELCh color 83, 16.731, 61.134 looks on a black background.

Color Contrast Check

Large Text (above 18pt) WCAG AA ✓ Pass

Any Text WCAG AA ✓ Pass

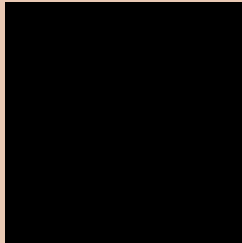
Large Text (above 18pt) WCAG AAA ✓ Pass

Any Text WCAG AAA ✓ Pass

If you want to check with other color combinations, try the [Color Contrast Checker](#).

CIELCh 83, 16.731, 61.134

Background



This preview shows how black text looks on a background with the CIELCh color 83, 16.731, 61.134.



This preview shows how white text looks on a background with the CIELCh color 83, 16.731, 61.134.

Color Blindness Simulation

Color vision deficiency is a very complex topic, and I could not describe the different causes any better than Wikipedia does, so if you want to learn more, you should check out their [article about color blindness](#).

Dichromacy



Original Color

83, 16.731, 61.134

Protanopia

83, 12.684, 91.569

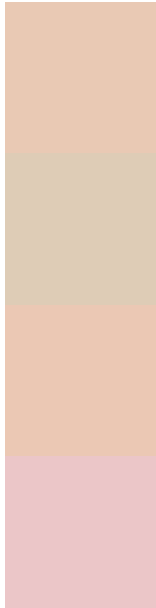
Deuteranopia

83, 17.653, 54.539



Tritanopia
83, 16.716, 352.598

Trichromacy



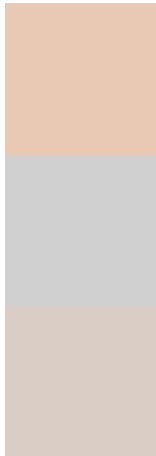
Original Color
83, 16.731, 61.134

Protanomaly
83, 13.509, 78.312

Deuteranomaly
83, 17.321, 57.350

Tritanomaly
83, 13.940, 16.158

Monochromacy



Original Color
83, 16.731, 61.134

Achromatopsia
83, 0.010, 296.813

Achromatomaly
83, 5.777, 59.153

CSS Examples

Text

The CSS property to change the color of the text to CIELCh 83, 16.731, 61.134 is called "color". The color property can be set on classes, ids or directly on the HTML element.

This example shows how text in the color `rgb(233, 201, 180)` looks like.

```
.text, #text, p{  
    color:rgb(233, 201, 180)  
}
```

If you want to add a text shadow in that color use the text-shadow property, you can generate a text shadow directly with our [CSS Text Shadow Generator](#).

Here you see how black text with a 4 pixel rgb(233, 201, 180) colored shadow looks like.

```
.shadow{ text-shadow: 4px 4px 2px rgb(233, 201, 180) }
```

Border

The CSS property to change the border of an element to CIELCh 83, 16.731, 61.134 is called "border". The border property can be set on classes, ids or directly on the HTML element.

This example shows the color as border, it can be applied via the CSS property "border" or "border-color".

```
.border, #border, table{ border:4px solid rgb(233, 201, 180) }
```

If only the border color should be changed use the property `border-color`.

```
.border{ border-color:rgb(233, 201, 180) }
```

If you want to add a box shadow in that color use:

Here you see how a box with a 4 pixel `rgb(233, 201, 180)` colored shadow looks like.

```
.boxshadow{ -moz-box-shadow:4px 4px 4px  
4px rgb(233, 201, 180); -webkit-box-  
shadow:4px 4px 4px 4px rgb(233, 201, 180);  
box-shadow:4px 4px 4px 4px rgb(233, 201,  
180) }
```

Background

The CSS property to change the background color of an element to CIELCh 83, 16.731, 61.134 is called "background". The background property can be set on classes, ids or directly on the HTML element.

```
.background, #background, body{  
background: rgb(233, 201, 180) }
```

If only the background color should be changed can be used:

```
.background{ background-color: rgb(233,  
201, 180) }
```

This example shows the color as background, it is applied via the CSS property "background".

To optimize and compress your CSS code, you can use our [online CSS compressor and optimizer](#) based on csstidy. If you want to create a linear or radial gradient as background or border, check our [CSS Gradient Generator](#).

Hey! You found this booklet interesting? Support Converting Colors with the new Membership Option!

The pro membership hides all ads, plus gives you double the colors in the color bucket, and more awesome pro features!

[Learn more, Memberships starting at \\$2.50/m!](#)

**Follow me
on Twitter!**

@ConvertingColor