

# Converting Colors

CIELCh(83, 18.052, 50.056)

Have a look what the booklet for  
CIELCh(83, 18.052, 50.056) contains.

<b>CIELCh(83, 18.074, 49.863)</b>	3
<i><b>Conversions</b></i>	4
<i><b>Details</b></i>	6
<i><b>Harmonies</b></i>	11
<i><b>Previews</b></i>	20
<i><b>Color Blindness Simulation</b></i>	23
<i><b>CSS Examples</b></i>	26

# Color

**CIELCh(83, 18.074, 49.863)**

# Conversions

Conversions Part 1	
Format	Color
Hex	EEC6B5
RGB	238, 198, 181
RGB Percent	93%, 78%, 71%
CMY	0.0651, 0.2220, 0.2887
CMYK	0.00, 0.17, 0.24, 0.07
HSL	18°, 63%, 82%
HSV	18°, 24%, 93%
XYZ	64.0569, 62.1629, 52.5420
YIQ	208.0220, 29.2970, 3.1930

# Conversions

## Conversions Part 2

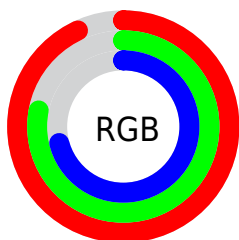
Format	Color
<a href="#">RYB</a>	<a href="#">238, 205, 181</a>
Decimal	<a href="#">15648437</a>
CIELab	<a href="#">83.00, 11.65, 13.82</a>
CIELCh	<a href="#">83, 18.074, 49.863</a>
Yxy	<a href="#">62.1629, 0.3583, 0.3477</a>
Android (android.graphics.Color)	<a href="#">4293838517</a> (0xFFEEC6B5)
YUV	<a href="#">208.0220, -13.3218, 26.2907</a>
Hunter-Lab	<a href="#">78.8435, 7.0473, 15.6791</a>

# Details

The CIELCh color **83, 18.074, 49.863** is a light color, and the websafe version is hex **FFCCCC**. A complement of this color would be **86, 15.685, 233.553**, and the grayscale version is **84, 0.010, 296.813**.

A 20% lighter version of the original color is **100, 9.112, 109.487**, and **63, 18.011, 50.029** is the 20% darker color. If you saturate the color by 10%, you get **78, 26.658, 49.408**, and if you desaturate by 10%, it is **88, 10.118, 50.409**.

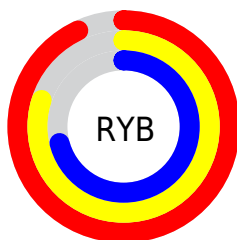
# Distribution



Red (93%)

Green (78%)

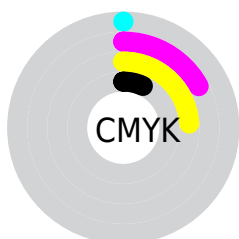
Blue (71%)



Red (93%)

Yellow (80%)

Blue (71%)

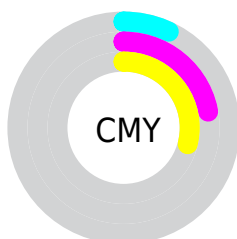


Cyan (0%)

Magenta (17%)

Yellow (24%)

Black (7%)



Cyan (7%)

Magenta (22%)

Yellow (29%)


# Brightness & Saturation Gradients

These gradients show how the CIELCh color 83, 18.074, 49.863 changes by changing the brightness by 10 percent. The first figure shows a shift by +10% for each color and the second figure -10%.

Similar to the brightness gradients but the following saturation gradients show a change of the CIELCh color 83, 18.074, 49.863 by changing the saturation by 10% instead.

 83, 18.074, 49.863

 83, 18.074, 49.863

 100, 18.074,  
49.863

 73, 18.074, 49.863

 63, 18.074, 49.863

 53, 18.074, 49.863

 43, 18.074, 49.863

 33, 18.074, 49.863

 23, 18.074, 49.863

 13, 18.074, 49.863

 3, 18.074, 49.863

 0, 18.074, 49.863

 83, 18.074, 49.863

 83, 18.074, 49.863


 78, 26.658, 49.408

 88, 10.118, 50.409

 74, 35.902, 49.048

 92, 2.741, 50.882

 70, 45.798, 48.811

 97, 4.115, 231.905

 66, 56.254, 48.691

 99, 5.703, 199.160

 62, 67.008, 48.626

 59, 77.439, 48.420

 56, 86.255, 47.614

 55, 90.473, 46.818

# Harmonies

# Complementary

The Complementary color scheme is a pair of colors which are on the opposite of each other on the color wheel.



83, 18.074, 49.863



86, 15.685, 233.553

# Rectangle

The Rectangle color scheme consists of four colors that form a rectangle on the color wheel.



83, 18.074, 49.863



83, 18.074, 99.863



83, 18.074, 229.863



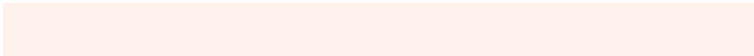
83, 18.074, 279.863

# Sweetspot

The Sweet Spot groups the original color and five complimentary colors.



83, 18.073, 49.872



96, 5.234, 50.776



80, 29.801, 335.292



51, 3.409, 50.747



0, 0.000, 0.000



53, 0.007, 296.813



# Same Dimension

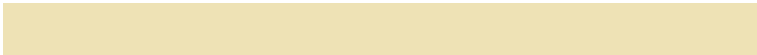
The Same Dimension uses a secret algorithm to generate beautiful new colors.



83, 18.073, 49.872



86, 23.617, 49.620



90, 23.546, 96.549



48, 4.079, 50.652



43, 73.928, 47.361



11, 24.848, 42.006

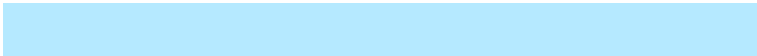


# Inverse Universe

The Inverse Universe completely reimagines the original color for something new.



86, 15.685, 233.553



90, 19.789, 234.209



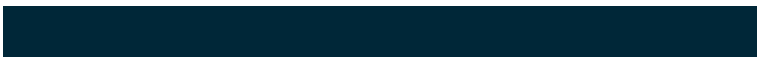
79, 24.109, 282.669



48, 3.875, 232.148



51, 38.151, 255.776

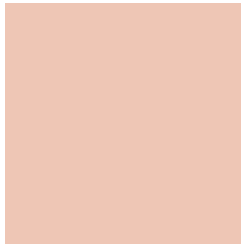


14, 15.727, 247.639



# Previews

## White Background



This preview shows how the CIE LCh color 83, 18.074, 49.863 looks on a white background.

## Color Contrast Check

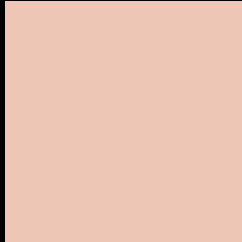
Large Text (above 18pt) WCAG AA × Fail

Any Text WCAG AA × Fail

Large Text (above 18pt) WCAG AAA × Fail

Any Text WCAG AAA × Fail

# Black Background



This preview shows how the CIELCh color 83, 18.074, 49.863 looks on a black background.

## Color Contrast Check

Large Text (above 18pt) WCAG AA ✓ Pass

Any Text WCAG AA ✓ Pass

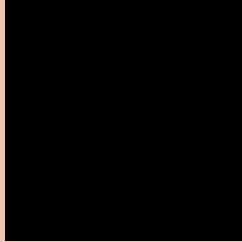
Large Text (above 18pt) WCAG AAA ✓ Pass

Any Text WCAG AAA ✓ Pass

If you want to check with other color combinations, try the [Color Contrast Checker](#).

**CIELCh 83, 18.074, 49.863**

## **Background**



This preview shows how black text looks on a background with the CIELCh color 83, 18.074, 49.863.



This preview shows how white text looks on a background with the CIELCh color 83, 18.074, 49.863.

# Color Blindness Simulation

Color vision deficiency is a very complex topic, and I could not describe the different causes any better than Wikipedia does, so if you want to learn more, you should check out their [article about color blindness](#).

## Dichromacy



### Original Color

83, 18.074, 49.863

### Protanopia

83, 11.680, 90.168

### Deuteranopia

83, 17.331, 53.196



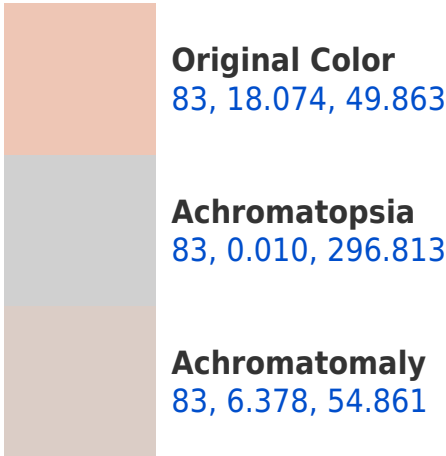
**Tritanopia**

83, 19.439, 357.112

# Trichromacy



# Monochromacy



# CSS Examples

## Text

The CSS property to change the color of the text to CIElCh 83, 18.074, 49.863 is called "color". The color property can be set on classes, ids or directly on the HTML element.

This example shows how text in the color `rgb(238, 198, 181)` looks like.

```
.text, #text, p{  
    color:rgb(238, 198, 181)  
}
```

If you want to add a text shadow in that color use the text-shadow property, you can generate a text shadow directly with our [CSS Text Shadow Generator](#).

Here you see how black text with a 4 pixel rgb(238, 198, 181) colored shadow looks like.

```
.shadow{ text-shadow: 4px 4px 2px rgb(238, 198, 181) }
```

## Border

The CSS property to change the border of an element to CIELCh 83, 18.074, 49.863 is called "border". The border property can be set on classes, ids or directly on the HTML element.

This example shows the color as border, it can be applied via the CSS property "border" or "border-color".

```
.border, #border, table{ border:4px solid rgb(238, 198, 181) }
```

If only the border color should be changed use the property border-color.

```
.border{ border-color:rgb(238, 198, 181) }
```

If you want to add a box shadow in that color use:

Here you see how a box with a 4 pixel rgb(238, 198, 181) colored shadow looks like.

```
.boxshadow{ -moz-box-shadow:4px 4px 4px  
4px rgb(238, 198, 181); -webkit-box-  
shadow:4px 4px 4px 4px rgb(238, 198, 181);  
box-shadow:4px 4px 4px 4px rgb(238, 198,  
181) }
```

# Background

The CSS property to change the background color of an element to CIELCh 83, 18.074, 49.863 is called "background". The background property can be set on classes, ids or directly on the HTML element.

```
.background, #background, body{  
background: rgb(238, 198, 181) }
```

If only the background color should be changed can be used:

```
.background{ background-color: rgb(238,  
198, 181) }
```

This example shows the color as background, it is applied via the CSS property "background".

To optimize and compress your CSS code, you can use our [online CSS compressor and optimizer](#) based on csstidy. If you want to create a linear or radial gradient as background or border, check our [CSS Gradient Generator](#).

Hey! You found this booklet  
interesting? Support Converting  
Colors with the new Membership  
Option!

The pro membership hides all ads, plus gives you  
double the colors in the color bucket, and more  
awesome pro features!

**[Learn more, Memberships starting at \\$2.50/m!](#)**

**Follow me  
on Twitter!**

@ConvertingColor