

Converting Colors

CIELCh(83, 18.340, 59.037)

Have a look what the booklet for
CIELCh(83, 18.340, 59.037) contains.

CIELCh(83, 18.340, 59.037)	3
<i>Conversions</i>	4
<i>Details</i>	6
<i>Harmonies</i>	11
<i>Previews</i>	20
<i>Color Blindness Simulation</i>	23
<i>CSS Examples</i>	26

Color

CIELCh(83, 18.340, 59.037)

Conversions

Conversions Part 1

Format	Color
Hex	ECC8B2
RGB	236, 200, 178
RGB Percent	93%, 78%, 70%
CMY	0.0757, 0.2168, 0.3030
CMYK	0.00, 0.15, 0.25, 0.08
HSL	23°, 60%, 81%
HSV	23°, 25%, 92%
XYZ	63.0907, 62.1629, 50.6472
YIQ	208.2560, 28.5180, 0.7900

Conversions

Conversions Part 2

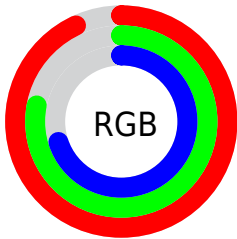
Format	Color
R _Y B	236, 213, 178
Decimal	15517874
CIE Lab	83.00, 9.44, 15.73
CIE LCh	83, 18.340, 59.037
Yxy	62.1629, 0.3587, 0.3534
Android (android.graphics.Color)	4293707954 (0xFFECC8B2)
YUV	208.2560, -14.9162, 24.3315
Hunter-Lab	78.8435, 4.8599, 17.1040

Details

The CIELCh color **83, 18.340, 59.037** is a light color, and the websafe version is hex **FFCCCC**. A complement of this color would be **84, 16.304, 244.483**, and the grayscale version is **84, 0.010, 296.813**.

A 20% lighter version of the original color is **100, 10.630, 109.373**, and **63, 18.307, 59.657** is the 20% darker color. If you saturate the color by 10%, you get **79, 26.696, 58.174**, and if you desaturate by 10%, it is **87, 10.523, 59.949**.

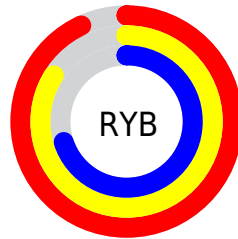
Distribution



Red (93%)

Green (78%)

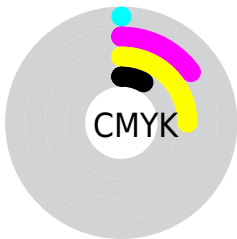
Blue (70%)



Red (93%)

Yellow (84%)

Blue (70%)

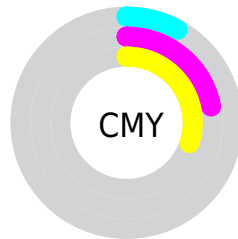


Cyan (0%)

Magenta (15%)

Yellow (25%)

Black (8%)



Cyan (8%)

Magenta (22%)

Yellow (30%)


Brightness & Saturation Gradients

These gradients show how the CIELCh color 83, 18.340, 59.037 changes by changing the brightness by 10 percent. The first figure shows a shift by +10% for each color and the second figure -10%.

Similar to the brightness gradients but the following saturation gradients show a change of the CIELCh color 83, 18.340, 59.037 by changing the saturation by 10% instead.

 83, 18.340, 59.037

 83, 18.340, 59.037

 100, 18.340,
59.037

 73, 18.340, 59.037

 63, 18.340, 59.037

 53, 18.340, 59.037

 43, 18.340, 59.037

 33, 18.340, 59.037

 23, 18.340, 59.037

 13, 18.340, 59.037

 3, 18.340, 59.037

 0, 18.340, 59.037

83, 18.340, 59.037

83, 18.340, 59.037

79, 26.696, 58.174

87, 10.523, 59.949

75, 35.615, 57.351

91, 3.205, 60.787

71, 45.076, 56.584

96, 3.664, 242.055

68, 54.973, 55.852

99, 6.614, 199.087

64, 65.015, 55.074

61, 74.552, 54.050

58, 82.356, 52.360

57, 85.736, 51.221

Harmonies

Complementary

The Complementary color scheme is a pair of colors which are on the opposite of each other on the color wheel.



83, 18.340, 59.037



84, 16.304, 244.483

Rectangle

The Rectangle color scheme consists of four colors that form a rectangle on the color wheel.



83, 18.340, 59.037



83, 18.340, 109.037



83, 18.340, 239.037



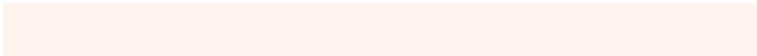
83, 18.340, 289.037

Sweetspot

The Sweet Spot groups the original color and five complimentary colors.



83, 18.340, 59.046



97, 5.244, 60.611



79, 28.678, 339.014



51, 3.415, 60.562



0, 0.000, 0.000



53, 0.007, 296.813

Same Dimension

The Same Dimension uses a secret algorithm to generate beautiful new colors.



83, 18.340, 59.046



87, 24.296, 58.558



90, 26.042, 101.427



47, 4.010, 60.407



44, 69.957, 51.869



11, 22.712, 48.531

Inverse Universe

The Inverse Universe completely reimagines the original color for something new.



84, 16.304, 244.483



88, 20.955, 245.405



76, 27.107, 287.322



47, 3.851, 242.470



46, 43.677, 269.321



12, 16.861, 260.368

Previews

White Background



This preview shows how the CIELCh color 83, 18.340, 59.037 looks on a white background.

Color Contrast Check

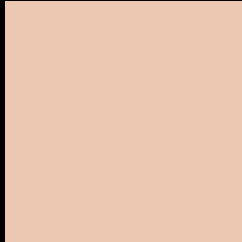
Large Text (above 18pt) WCAG AA × Fail

Any Text WCAG AA × Fail

Large Text (above 18pt) WCAG AAA × Fail

Any Text WCAG AAA × Fail

Black Background



This preview shows how the CIELCh color 83, 18.340, 59.037 looks on a black background.

Color Contrast Check

Large Text (above 18pt) WCAG AA ✓ Pass

Any Text WCAG AA ✓ Pass

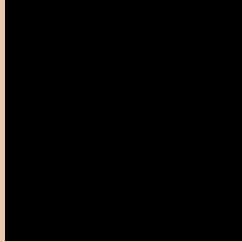
Large Text (above 18pt) WCAG AAA ✓ Pass

Any Text WCAG AAA ✓ Pass

If you want to check with other color combinations, try the [Color Contrast Checker](#).

CIELCh 83, 18.340, 59.037

Background



This preview shows how black text looks on a background with the CIELCh color 83, 18.340, 59.037.

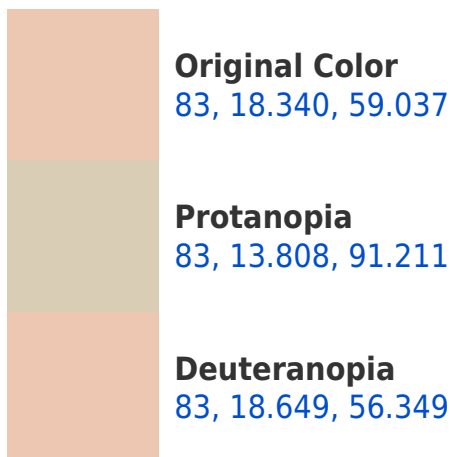


This preview shows how white text looks on a background with the CIELCh color 83, 18.340, 59.037.

Color Blindness Simulation

Color vision deficiency is a very complex topic, and I could not describe the different causes any better than Wikipedia does, so if you want to learn more, you should check out their [article about color blindness](#).

Dichromacy





Tritanopia
83, 18.399, 355.559

Trichromacy



Original Color
83, 18.340, 59.037

Protanomaly
83, 14.835, 77.648

Deuteranomaly
83, 18.649, 56.349

Tritanomaly
83, 15.496, 18.658

Monochromacy



Original Color
83, 18.340, 59.037

Achromatopsia
83, 0.010, 296.813

Achromatomaly
83, 6.412, 60.580

CSS Examples

Text

The CSS property to change the color of the text to CIELCh 83, 18.340, 59.037 is called "color". The color property can be set on classes, ids or directly on the HTML element.

This example shows how text in the color `rgb(236, 200, 178)` looks like.

```
.text, #text, p{  
    color:rgb(236, 200, 178)  
}
```

If you want to add a text shadow in that color use the text-shadow property, you can generate a text shadow directly with our [CSS Text Shadow Generator](#).

Here you see how black text with a 4 pixel rgb(236, 200, 178) colored shadow looks like.

```
.shadow{ text-shadow: 4px 4px 2px rgb(236, 200, 178) }
```

Border

The CSS property to change the border of an element to CIELCh 83, 18.340, 59.037 is called "border". The border property can be set on classes, ids or directly on the HTML element.

This example shows the color as border, it can be applied via the CSS property "border" or "border-color".

```
.border, #border, table{ border:4px solid rgb(236, 200, 178) }
```

If only the border color should be changed use the property `border-color`.

```
.border{ border-color:rgb(236, 200, 178) }
```

If you want to add a box shadow in that color use:

Here you see how a box with a 4 pixel `rgb(236, 200, 178)` colored shadow looks like.

```
.boxshadow{ -moz-box-shadow:4px 4px 4px  
4px rgb(236, 200, 178); -webkit-box-  
shadow:4px 4px 4px 4px rgb(236, 200, 178);  
box-shadow:4px 4px 4px 4px rgb(236, 200,  
178) }
```

Background

The CSS property to change the background color of an element to CIELCh 83, 18.340, 59.037 is called "background". The background property can be set on classes, ids or directly on the HTML element.

```
.background, #background, body{  
background: rgb(236, 200, 178) }
```

If only the background color should be changed can be used:

```
.background{ background-color: rgb(236,  
200, 178) }
```

This example shows the color as background, it is applied via the CSS property "background".

To optimize and compress your CSS code, you can use our [online CSS compressor and optimizer](#) based on csstidy. If you want to create a linear or radial gradient as background or border, check our [CSS Gradient Generator](#).

Hey! You found this booklet interesting? Support Converting Colors with the new Membership Option!

The pro membership hides all ads, plus gives you double the colors in the color bucket, and more awesome pro features!

[Learn more, Memberships starting at \\$2.50/m!](#)

**Follow me
on Twitter!**

@ConvertingColor