

Converting Colors

CIELCh(83, 20.932, 49.494)

Have a look what the booklet for
CIELCh(83, 20.932, 49.494) contains.

CIELCh(83, 20.791, 49.063)	3
<i>Conversions</i>	4
<i>Details</i>	6
<i>Harmonies</i>	11
<i>Previews</i>	20
<i>Color Blindness Simulation</i>	23
<i>CSS Examples</i>	26

Color

CIELCh(83, 20.791, 49.063)

Conversions

Conversions Part 1

Format	Color
Hex	F3C5B2
RGB	243, 197, 178
RGB Percent	95%, 77%, 70%
CMY	0.0473, 0.2276, 0.3022
CMYK	0.00, 0.19, 0.27, 0.05
HSL	18°, 73%, 83%
HSV	18°, 27%, 95%
XYZ	64.9252, 62.1629, 50.6672
YIQ	208.5880, 33.5150, 3.8430

Conversions

Conversions Part 2

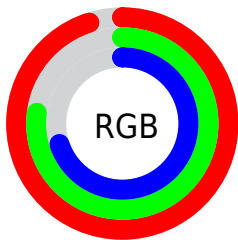
Format	Color
R_{YB}	243, 205, 178
Decimal	15975858
CIE _{Lab}	83.00, 13.62, 15.71
CIE _{LCh}	83, 20.791, 49.063
Yxy	62.1629, 0.3653, 0.3497
Android (android.graphics.Color)	4294165938 (0xFFFF3C5B2)
YUV	208.5880, -15.0799, 30.1793
Hunter-Lab	78.8435, 9.0133, 17.0889

Details

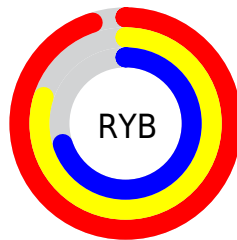
The CIELCh color **83, 20.791, 49.063** is a light color, and the websafe version is hex **FFCCCC**. A complement of this color would be **87, 17.666, 233.093**, and the grayscale version is **84, 0.010, 296.813**.

A 20% lighter version of the original color is **99, 10.134, 107.371**, and **63, 20.951, 49.128** is the 20% darker color. If you saturate the color by 10%, you get **78, 29.719, 48.668**, and if you desaturate by 10%, it is **88, 12.518, 49.562**.

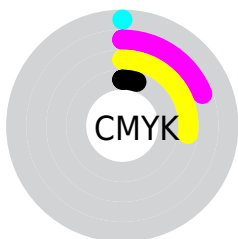
Distribution



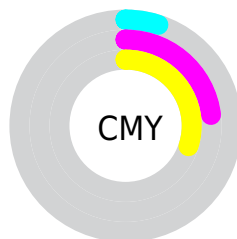
- Red (95%)
- Green (77%)
- Blue (70%)



- Red (95%)
- Yellow (80%)
- Blue (70%)



- Cyan (0%)
- Magenta (19%)
- Yellow (27%)
- Black (5%)



- Cyan (5%)
- Magenta (23%)
- Yellow (30%)


Brightness & Saturation Gradients

These gradients show how the CIELCh color 83, 20.791, 49.063 changes by changing the brightness by 10 percent. The first figure shows a shift by +10% for each color and the second figure -10%.

Similar to the brightness gradients but the following saturation gradients show a change of the CIELCh color 83, 20.791, 49.063 by changing the saturation by 10% instead.

 83, 20.791, 49.063

 83, 20.791, 49.063

 100, 20.791,
49.063

 73, 20.791, 49.063

 63, 20.791, 49.063

 53, 20.791, 49.063

 43, 20.791, 49.063

 33, 20.791, 49.063

 23, 20.791, 49.063

 13, 20.791, 49.063

 3, 20.791, 49.063

 0, 20.791, 49.063

83, 20.791, 49.063

83, 20.791, 49.063

78, 29.719, 48.668

88, 12.518, 49.562

74, 39.328, 48.382

93, 4.855, 50.071

70, 49.588, 48.226

97, 2.257, 231.089

66, 60.369, 48.184

99, 4.162, 199.301

62, 71.325, 48.167

59, 81.658, 47.914

56, 89.833, 46.882

56, 92.097, 46.512

Harmonies

Complementary

The Complementary color scheme is a pair of colors which are on the opposite of each other on the color wheel.



83, 20.791, 49.063



87, 17.666, 233.093

Rectangle

The Rectangle color scheme consists of four colors that form a rectangle on the color wheel.



83, 20.791, 49.063



83, 20.791, 99.063



83, 20.791, 229.063



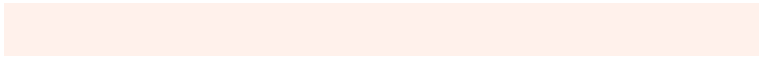
83, 20.791, 279.063

Sweetspot

The Sweet Spot groups the original color and five complimentary colors.



83, 20.790, 49.071



96, 6.011, 50.013



80, 33.851, 335.511



51, 4.297, 49.939



0, 0.000, 0.000



53, 0.007, 296.813

Same Dimension

The Same Dimension uses a secret algorithm to generate beautiful new colors.



83, 20.790, 49.071



84, 26.417, 48.844



91, 26.764, 96.199



49, 4.155, 49.941



43, 74.953, 47.049



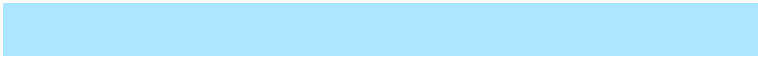
11, 26.180, 42.170

Inverse Universe

The Inverse Universe completely reimagines the original color for something new.



87, 17.666, 233.093



89, 21.623, 233.800



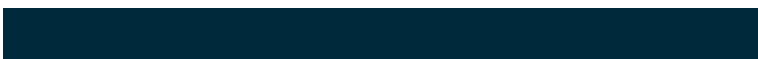
78, 27.494, 283.149



49, 3.944, 231.390



52, 38.210, 254.710



15, 16.128, 247.044

Previews

White Background



This preview shows how the CIELCh color 83, 20.791, 49.063 looks on a white background.

Color Contrast Check

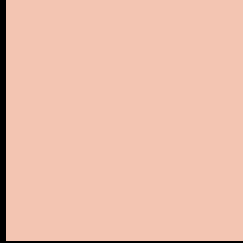
Large Text (above 18pt) WCAG AA × Fail

Any Text WCAG AA × Fail

Large Text (above 18pt) WCAG AAA × Fail

Any Text WCAG AAA × Fail

Black Background



This preview shows how the CIE LCh color 83, 20.791, 49.063 looks on a black background.

Color Contrast Check

Large Text (above 18pt) WCAG AA ✓ Pass

Any Text WCAG AA ✓ Pass

Large Text (above 18pt) WCAG AAA ✓ Pass

Any Text WCAG AAA ✓ Pass

If you want to check with other color combinations, try the [Color Contrast Checker](#).

CIELCh 83, 20.791, 49.063

Background



This preview shows how black text looks on a background with the CIELCh color 83, 20.791, 49.063.



This preview shows how white text looks on a background with the CIELCh color 83, 20.791, 49.063.

Color Blindness Simulation

Color vision deficiency is a very complex topic, and I could not describe the different causes any better than Wikipedia does, so if you want to learn more, you should check out their [article about color blindness](#).

Dichromacy



Original Color

83, 20.791, 49.063

Protanopia

83, 12.684, 91.569

Deuteranopia

83, 18.649, 56.349



Tritanopia
83, 21.194, 359.390

Trichromacy



Original Color
83, 20.791, 49.063

Protanomaly
83, 14.638, 71.755

Deuteranomaly
83, 19.336, 53.118

Tritanomaly
83, 19.415, 16.316

Monochromacy



Original Color
83, 20.791, 49.063

Achromatopsia
84, 0.010, 296.813

Achromatomaly
84, 7.011, 51.326

CSS Examples

Text

The CSS property to change the color of the text to CIELCh 83, 20.791, 49.063 is called "color". The color property can be set on classes, ids or directly on the HTML element.

This example shows how text in the color `rgb(243, 197, 178)` looks like.

```
.text, #text, p{  
    color:rgb(243, 197, 178)  
}
```

If you want to add a text shadow in that color use the text-shadow property, you can generate a text shadow directly with our [CSS Text Shadow Generator](#).

Here you see how black text with a 4 pixel rgb(243, 197, 178) colored shadow looks like.

```
.shadow{ text-shadow: 4px 4px 2px rgb(243, 197, 178) }
```

Border

The CSS property to change the border of an element to CIELCh 83, 20.791, 49.063 is called "border". The border property can be set on classes, ids or directly on the HTML element.

This example shows the color as border, it can be applied via the CSS property "border" or "border-color".

```
.border, #border, table{ border:4px solid rgb(243, 197, 178) }
```

If only the border color should be changed use the property `border-color`.

```
.border{ border-color:rgb(243, 197, 178) }
```

If you want to add a box shadow in that color use:

Here you see how a box with a 4 pixel `rgb(243, 197, 178)` colored shadow looks like.

```
.boxshadow{ -moz-box-shadow:4px 4px 4px  
4px rgb(243, 197, 178); -webkit-box-  
shadow:4px 4px 4px 4px rgb(243, 197, 178);  
box-shadow:4px 4px 4px 4px rgb(243, 197,  
178) }
```

Background

The CSS property to change the background color of an element to CIELCh 83, 20.791, 49.063 is called "background". The background property can be set on classes, ids or directly on the HTML element.

```
.background, #background, body{  
background: rgb(243, 197, 178) }
```

If only the background color should be changed can be used:

```
.background{ background-color: rgb(243,  
197, 178) }
```

This example shows the color as background, it is applied via the CSS property "background".

To optimize and compress your CSS code, you can use our [online CSS compressor and optimizer](#) based on csstidy. If you want to create a linear or radial gradient as background or border, check our [CSS Gradient Generator](#).

Hey! You found this booklet interesting? Support Converting Colors with the new Membership Option!

The pro membership hides all ads, plus gives you double the colors in the color bucket, and more awesome pro features!

[Learn more, Memberships starting at \\$2.50/m!](#)

**Follow me
on Twitter!**

@ConvertingColor