

Converting Colors

CIELCh(83, 5.098, 15.914)

Have a look what the booklet for
CIELCh(83, 5.098, 15.914) contains.

CIELCh(83, 4.788, 19.651)	3
<i>Conversions</i>	4
<i>Details</i>	6
<i>Harmonies</i>	11
<i>Previews</i>	20
<i>Color Blindness Simulation</i>	23
<i>CSS Examples</i>	26

Color

CIELCh(83, 4.788, 19.651)

Conversions

Conversions Part 1

Format	Color
Hex	D9CCCC
RGB	217, 204, 204
RGB Percent	85%, 80%, 80%
CMY	0.1498, 0.2008, 0.2008
CMYK	0.00, 0.06, 0.06, 0.15
HSL	0°, 15%, 82%
HSV	0°, 6%, 85%
XYZ	60.9769, 62.1629, 65.7874
YIQ	207.8870, 7.7480, 2.7560

Conversions

Conversions Part 2

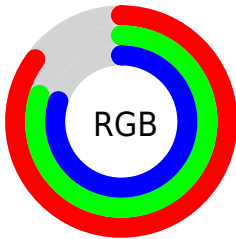
Format	Color
R _Y B	217, 204, 204
Decimal	14273740
CIE Lab	83.00, 4.51, 1.61
CIE LCh	83, 4.788, 19.651
Yxy	62.1629, 0.3228, 0.3290
Android (android.graphics.Color)	4292463820 (0xFFD9CCCC)
YUV	207.8870, -1.9163, 7.9921
Hunter-Lab	78.8435, 0.0743, 5.7185

Details

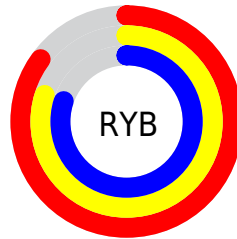
The CIELCh color **83, 4.788, 19.651** is a light color, and the websafe version is hex **CCCCCC**. A complement of this color would be **86, 4.610, 199.226**, and the grayscale version is **83, 0.010, 296.813**.

A 20% lighter version of the original color is **100, 0.012, 296.813**, and **63, 4.690, 19.757** is the 20% darker color. If you saturate the color by 10%, you get **77, 13.285, 20.492**, and if you desaturate by 10%, it is **89, 3.072, 199.412**.

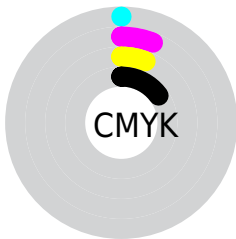
Distribution



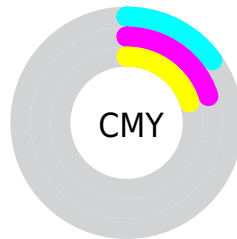
- Red (85%)
- Green (80%)
- Blue (80%)



- Red (85%)
- Yellow (80%)
- Blue (80%)



- Cyan (0%)
- Magenta (6%)
- Yellow (6%)
- Black (15%)



- Cyan (15%)
- Magenta (20%)
- Yellow (20%)

Brightness & Saturation Gradients

These gradients show how the CIELCh color 83, 4.788, 19.651 changes by changing the brightness by 10 percent. The first figure shows a shift by +10% for each color and the second figure -10%.

Similar to the brightness gradients but the following saturation gradients show a change of the CIELCh color 83, 4.788, 19.651 by changing the saturation by 10% instead.



83, 4.788, 19.651

83, 4.788, 19.651

77, 13.285, 20.492

89, 3.072, 199.412

71, 22.447, 21.469

95, 10.339,
198.825

66, 32.246, 22.730

97, 12.835,
198.649

61, 42.585, 24.377

56, 53.269, 26.521

52, 63.998, 29.257

49, 74.350, 32.574

47, 83.638, 36.153

46, 90.368, 39.044

Harmonies

Complementary

The Complementary color scheme is a pair of colors which are on the opposite of each other on the color wheel.



83, 4.788, 19.651



86, 4.610, 199.226

Rectangle

The Rectangle color scheme consists of four colors that form a rectangle on the color wheel.



83, 4.788, 19.651



83, 4.788, 69.651



83, 4.788, 199.651



83, 4.788, 249.651

Sweetspot

The Sweet Spot groups the original color and five complimentary colors.



83, 4.786, 19.674



99, 1.794, 19.182



83, 8.354, 324.737



53, 1.020, 19.156



0, 0.000, 0.000



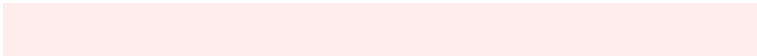
53, 0.007, 296.813

Same Dimension

The Same Dimension uses a secret algorithm to generate beautiful new colors.



83, 4.786, 19.674



95, 6.403, 19.764



85, 4.146, 74.599



44, 3.683, 19.803



36, 78.231, 39.932



5, 23.836, 20.282

Inverse Universe

The Inverse Universe completely reimagines the original color for something new.



86, 4.610, 199.226



99, 6.125, 199.150



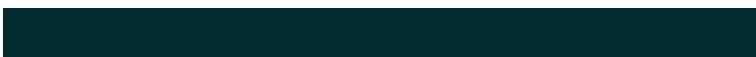
84, 4.099, 256.271



46, 3.512, 199.117



64, 37.516, 196.430



16, 15.069, 196.422

Previews

White Background



This preview shows how the CIELCh color 83, 4.788, 19.651 looks on a white background.

Color Contrast Check

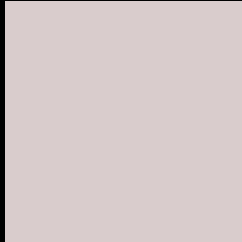
Large Text (above 18pt) WCAG AA × Fail

Any Text WCAG AA × Fail

Large Text (above 18pt) WCAG AAA × Fail

Any Text WCAG AAA × Fail

Black Background



This preview shows how the CIELCh color 83, 4.788, 19.651 looks on a black background.

Color Contrast Check

Large Text (above 18pt) WCAG AA ✓ Pass

Any Text WCAG AA ✓ Pass

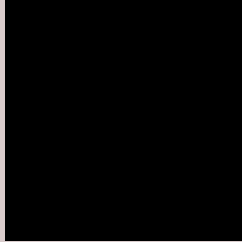
Large Text (above 18pt) WCAG AAA ✓ Pass

Any Text WCAG AAA ✓ Pass

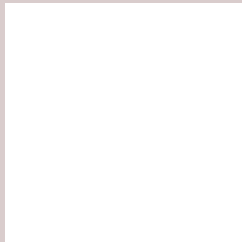
If you want to check with other color combinations, try the [Color Contrast Checker](#).

CIELCh 83, 4.788, 19.651

Background



This preview shows how black text looks on a background with the CIELCh color 83, 4.788, 19.651.



This preview shows how white text looks on a background with the CIELCh color 83, 4.788, 19.651.

Color Blindness Simulation

Color vision deficiency is a very complex topic, and I could not describe the different causes any better than Wikipedia does, so if you want to learn more, you should check out their [article about color blindness](#).

Dichromacy



Original Color

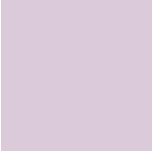
83, 4.788, 19.651

Protanopia

83, 1.896, 35.368

Deuteranopia

83, 10.350, 5.463



Tritanopia
83, 10.489, 326.469

Trichromacy



Original Color
83, 4.788, 19.651

Protanomaly
83, 2.931, 19.435

Deuteranomaly
83, 8.405, 5.500

Tritanomaly
83, 7.622, 336.099

Monochromacy



Original Color
83, 4.788, 19.651

Achromatopsia
83, 0.010, 296.813

Achromatomaly
83, 1.826, 19.233

CSS Examples

Text

The CSS property to change the color of the text to CIELCh 83, 4.788, 19.651 is called "color". The color property can be set on classes, ids or directly on the HTML element.

This example shows how text in the color `rgb(217, 204, 204)` looks like.

```
.text, #text, p{  
    color:rgb(217, 204, 204)  
}
```

If you want to add a text shadow in that color use the text-shadow property, you can generate a text shadow directly with our [CSS Text Shadow Generator](#).

Here you see how black text with a 4 pixel rgb(217, 204, 204) colored shadow looks like.

```
.shadow{ text-shadow: 4px 4px 2px rgb(217, 204, 204) }
```

Border

The CSS property to change the border of an element to CIELCh 83, 4.788, 19.651 is called "border". The border property can be set on classes, ids or directly on the HTML element.

This example shows the color as border, it can be applied via the CSS property "border" or "border-color".

```
.border, #border, table{ border:4px solid rgb(217, 204, 204) }
```

If only the border color should be changed use the property border-color.

```
.border{ border-color:rgb(217, 204, 204) }
```

If you want to add a box shadow in that color use:

Here you see how a box with a 4 pixel rgb(217, 204, 204) colored shadow looks like.

```
.boxshadow{ -moz-box-shadow:4px 4px 4px  
4px rgb(217, 204, 204); -webkit-box-  
shadow:4px 4px 4px 4px rgb(217, 204, 204);  
box-shadow:4px 4px 4px 4px rgb(217, 204,  
204) }
```

Background

The CSS property to change the background color of an element to CIELCh 83, 4.788, 19.651 is called "background". The background property can be set on classes, ids or directly on the HTML element.

```
.background, #background, body{  
background: rgb(217, 204, 204) }
```

If only the background color should be changed can be used:

```
.background{ background-color: rgb(217,  
204, 204) }
```

This example shows the color as background, it is applied via the CSS property "background".

To optimize and compress your CSS code, you can use our [online CSS compressor and optimizer](#) based on csstidy. If you want to create a linear or radial gradient as background or border, check our [CSS Gradient Generator](#).

Hey! You found this booklet interesting? Support Converting Colors with the new Membership Option!

The pro membership hides all ads, plus gives you double the colors in the color bucket, and more awesome pro features!

[Learn more, Memberships starting at \\$2.50/m!](#)

**Follow me
on Twitter!**

@ConvertingColor