

Converting Colors

CIELCh(83, 5.223, 64.393)

Have a look what the booklet for
CIELCh(83, 5.223, 64.393) contains.

CIELCh(83, 5.218, 64.396)	3
<i>Conversions</i>	4
<i>Details</i>	6
<i>Harmonies</i>	11
<i>Previews</i>	20
<i>Color Blindness Simulation</i>	23
<i>CSS Examples</i>	26

Color

CIELCh(83, 5.218, 64.396)

Conversions

Conversions Part 1

Format	Color
Hex	D7CDC6
RGB	215, 205, 198
RGB Percent	84%, 80%, 78%
CMY	0.1570, 0.1962, 0.2237
CMYK	0.00, 0.05, 0.08, 0.16
HSL	25°, 18%, 81%
HSV	25°, 8%, 84%
XYZ	60.0256, 62.1629, 62.2399
YIQ	207.1920, 8.2070, -0.0570

Conversions

Conversions Part 2

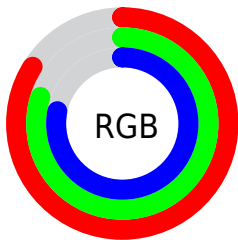
Format	Color
R _Y B	215, 210, 198
Decimal	14142918
CIE Lab	83.00, 2.25, 4.71
CIE LCh	83, 5.218, 64.396
Yxy	62.1629, 0.3255, 0.3371
Android (android.graphics.Color)	4292332998 (0xFFD7CDC6)
YUV	207.1920, -4.5317, 6.8476
Hunter-Lab	78.8435, -2.0793, 8.3862

Details

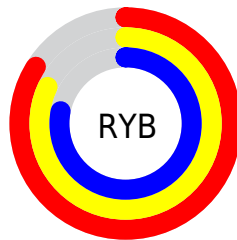
The CIELCh color **83, 5.218, 64.396** is a light color, and the websafe version is hex **CCCCCC**. A complement of this color would be **83, 5.070, 246.320**, and the grayscale version is **83, 0.010, 296.813**.

A 20% lighter version of the original color is **100, 0.012, 296.813**, and **63, 5.270, 67.208** is the 20% darker color. If you saturate the color by 10%, you get **79, 12.186, 63.428**, and if you desaturate by 10%, it is **87, 1.350, 245.901**.

Distribution



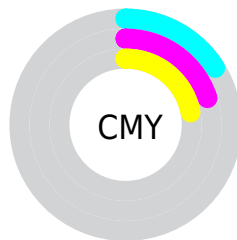
- Red (84%)
- Green (80%)
- Blue (78%)



- Red (84%)
- Yellow (82%)
- Blue (78%)



- Cyan (0%)
- Magenta (5%)
- Yellow (8%)
- Black (16%)



- Cyan (16%)
- Magenta (20%)
- Yellow (22%)

Brightness & Saturation Gradients

These gradients show how the CIELCh color 83, 5.218, 64.396 changes by changing the brightness by 10 percent. The first figure shows a shift by +10% for each color and the second figure -10%.

Similar to the brightness gradients but the following saturation gradients show a change of the CIELCh color 83, 5.218, 64.396 by changing the saturation by 10% instead.



83, 5.218, 64.396

83, 5.218, 64.396

79, 12.186, 63.428

87, 1.350, 245.901

76, 19.594, 62.413

91, 7.560, 246.665

72, 27.471, 61.419

94, 11.099,
233.230

69, 35.823, 60.458

97, 13.423,
198.610

65, 44.606, 59.524

62, 53.673, 58.580

59, 62.671, 57.521

56, 70.859, 56.102

54, 77.171, 53.964

Harmonies

Complementary

The Complementary color scheme is a pair of colors which are on the opposite of each other on the color wheel.



83, 5.218, 64.396



83, 5.070, 246.320

Rectangle

The Rectangle color scheme consists of four colors that form a rectangle on the color wheel.



83, 5.218, 64.396



83, 5.218, 114.396



83, 5.218, 244.396



83, 5.218, 294.396

Sweetspot

The Sweet Spot groups the original color and five complimentary colors.



83, 5.218, 64.423



99, 1.485, 64.777



81, 8.266, 339.180



53, 0.844, 64.769



0, 0.000, 0.000



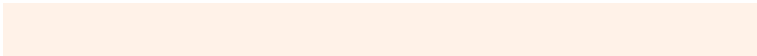
53, 0.007, 296.813

Same Dimension

The Same Dimension uses a secret algorithm to generate beautiful new colors.



83, 5.218, 64.423



96, 6.847, 64.311



85, 8.028, 104.970



43, 3.752, 64.279



43, 65.754, 54.174



9, 17.314, 48.986

Inverse Universe

The Inverse Universe completely reimagines the original color for something new.



83, 5.070, 246.320



96, 6.618, 246.454



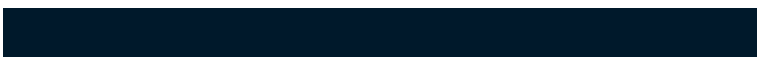
81, 8.152, 286.683



43, 3.621, 246.492



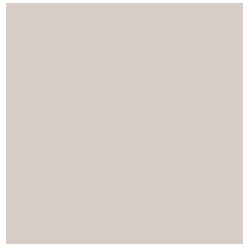
41, 44.505, 273.658



8, 15.091, 262.445

Previews

White Background



This preview shows how the CIELCh color 83, 5.218, 64.396 looks on a white background.

Color Contrast Check

Large Text (above 18pt) WCAG AA × Fail

Any Text WCAG AA × Fail

Large Text (above 18pt) WCAG AAA × Fail

Any Text WCAG AAA × Fail

Black Background



This preview shows how the CIE LCh color 83, 5.218, 64.396 looks on a black background.

Color Contrast Check

Large Text (above 18pt) WCAG AA ✓ Pass

Any Text WCAG AA ✓ Pass

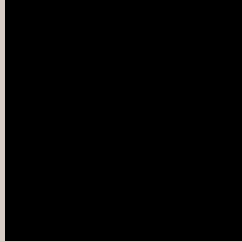
Large Text (above 18pt) WCAG AAA ✓ Pass

Any Text WCAG AAA ✓ Pass

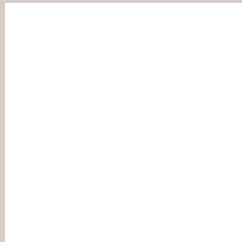
If you want to check with other color combinations, try the [Color Contrast Checker](#).

CIELCh 83, 5.218, 64.396

Background



This preview shows how black text looks on a background with the CIELCh color 83, 5.218, 64.396.

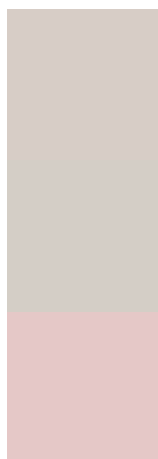


This preview shows how white text looks on a background with the CIELCh color 83, 5.218, 64.396.

Color Blindness Simulation

Color vision deficiency is a very complex topic, and I could not describe the different causes any better than Wikipedia does, so if you want to learn more, you should check out their [article about color blindness](#).

Dichromacy



Original Color

83, 5.218, 64.396

Protanopia

83, 4.746, 81.840

Deuteranopia

83, 10.891, 22.948



Tritanopia
83, 10.282, 324.817

Trichromacy



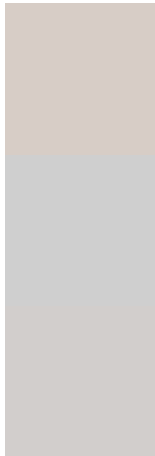
Original Color
83, 5.218, 64.396

Protanomaly
83, 4.930, 77.995

Deuteranomaly
83, 8.371, 30.793

Tritanomaly
83, 6.651, 340.430

Monochromacy



Original Color
83, 5.218, 64.396

Achromatopsia
83, 0.010, 296.813

Achromatomaly
83, 1.791, 55.190

CSS Examples

Text

The CSS property to change the color of the text to CIELCh 83, 5.218, 64.396 is called "color". The color property can be set on classes, ids or directly on the HTML element.

This example shows how text in the color `rgb(215, 205, 198)` looks like.

```
.text, #text, p{  
    color:rgb(215, 205, 198)  
}
```

If you want to add a text shadow in that color use the text-shadow property, you can generate a text shadow directly with our [CSS Text Shadow Generator](#).

Here you see how black text with a 4 pixel rgb(215, 205, 198) colored shadow looks like.

```
.shadow{ text-shadow: 4px 4px 2px rgb(215, 205, 198) }
```

Border

The CSS property to change the border of an element to CIELCh 83, 5.218, 64.396 is called "border". The border property can be set on classes, ids or directly on the HTML element.

This example shows the color as border, it can be applied via the CSS property "border" or "border-color".

```
.border, #border, table{ border:4px solid rgb(215, 205, 198) }
```

If only the border color should be changed use the property `border-color`.

```
.border{ border-color:rgb(215, 205, 198) }
```

If you want to add a box shadow in that color use:

Here you see how a box with a 4 pixel `rgb(215, 205, 198)` colored shadow looks like.

```
.boxshadow{ -moz-box-shadow:4px 4px 4px  
4px rgb(215, 205, 198); -webkit-box-  
shadow:4px 4px 4px 4px rgb(215, 205, 198);  
box-shadow:4px 4px 4px 4px rgb(215, 205,  
198) }
```

Background

The CSS property to change the background color of an element to CIELCh 83, 5.218, 64.396 is called "background". The background property can be set on classes, ids or directly on the HTML element.

```
.background, #background, body{  
background: rgb(215, 205, 198) }
```

If only the background color should be changed can be used:

```
.background{ background-color: rgb(215,  
205, 198) }
```

This example shows the color as background, it is applied via the CSS property "background".

To optimize and compress your CSS code, you can use our [online CSS compressor and optimizer](#) based on csstidy. If you want to create a linear or radial gradient as background or border, check our [CSS Gradient Generator](#).

Hey! You found this booklet interesting? Support Converting Colors with the new Membership Option!

The pro membership hides all ads, plus gives you double the colors in the color bucket, and more awesome pro features!

[Learn more, Memberships starting at \\$2.50/m!](#)

**Follow me
on Twitter!**

@ConvertingColor