

Converting Colors

CIELCh(83, 5.564, 357.470)

Have a look what the booklet for
CIELCh(83, 5.564, 357.470) contains.

CIELCh(83, 5.564, 357.470)	3
<i>Conversions</i>	4
<i>Details</i>	6
<i>Harmonies</i>	11
<i>Previews</i>	20
<i>Color Blindness Simulation</i>	23
<i>CSS Examples</i>	26

Color

CIELCh(83, 5.564, 357.470)

Conversions

Conversions Part 1

Format	Color
Hex	D9CBCF
RGB	217, 203, 207
RGB Percent	85%, 80%, 81%
CMY	0.1479, 0.2028, 0.1871
CMYK	0.00, 0.06, 0.05, 0.15
HSL	343°, 16%, 82%
HSV	343°, 6%, 85%
XYZ	61.4231, 62.1629, 67.9775
YIQ	207.6420, 7.0600, 4.2120

Conversions

Conversions Part 2

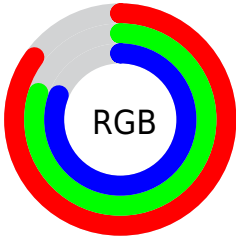
Format	Color
R _Y B	217, 203, 207
Decimal	14273487
CIE Lab	83.00, 5.56, -0.25
CIE LCh	83, 5.564, 357.470
Yxy	62.1629, 0.3206, 0.3245
Android (android.graphics.Color)	4292463567 (0xFFD9CBCF)
YUV	207.6420, -0.3165, 8.2070
Hunter-Lab	78.8435, 1.0846, 4.0716

Details

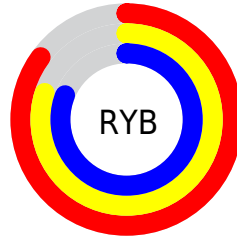
The CIELCh color $83, 5.564, 357.470$ is a light color, and the websafe version is hex `CCCCCC`. A complement of this color would be $86, 5.450, 176.477$, and the grayscale version is $83, 0.010, 296.813$.

A 20% lighter version of the original color is $100, 0.012, 296.813$, and $63, 5.533, 356.096$ is the 20% darker color. If you saturate the color by 10%, you get $77, 14.494, 358.587$, and if you desaturate by 10%, it is $89, 2.993, 176.835$.

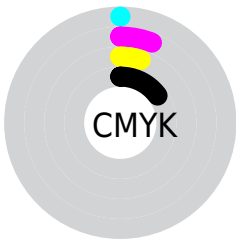
Distribution



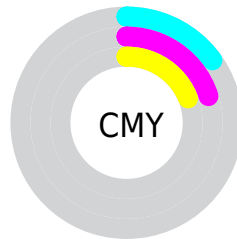
- Red (85%)
- Green (80%)
- Blue (81%)



- Red (85%)
- Yellow (80%)
- Blue (81%)



- Cyan (0%)
- Magenta (6%)
- Yellow (5%)
- Black (15%)



- Cyan (15%)
- Magenta (20%)
- Yellow (19%)

Brightness & Saturation Gradients

These gradients show how the CIELCh color 83, 5.564, 357.470 changes by changing the brightness by 10 percent. The first figure shows a shift by +10% for each color and the second figure -10%.

Similar to the brightness gradients but the following saturation gradients show a change of the CIELCh color 83, 5.564, 357.470 by changing the saturation by 10% instead.

■ 83, 5.564, 357.470

■ 83, 5.564, 357.470

■ 100, 5.564,
357.470

■ 73, 5.564, 357.470

■ 63, 5.564, 357.470

■ 53, 5.564, 357.470

■ 43, 5.564, 357.470

■ 33, 5.564, 357.470

■ 23, 5.564, 357.470

■ 13, 5.564, 357.470

■ 3, 5.564, 357.470

■ 0, 5.564, 357.470

83, 5.564, 357.470

83, 5.564, 357.470

77, 14.494,
358.587

89, 2.993, 176.835

72, 23.738,
359.823

95, 11.151,
175.904

66, 33.166, 1.282

97, 12.730,
196.029

61, 42.556, 3.050

97, 12.677,
198.659

57, 51.586, 5.240

53, 59.849, 7.998

50, 66.943, 11.497

47, 72.637, 15.882

46, 77.062, 21.157

Harmonies

Complementary

The Complementary color scheme is a pair of colors which are on the opposite of each other on the color wheel.



83, 5.564, 357.470



86, 5.450, 176.477

Rectangle

The Rectangle color scheme consists of four colors that form a rectangle on the color wheel.



83, 5.564, 357.470



83, 5.564, 47.470



83, 5.564, 177.470



83, 5.564, 227.470

Sweetspot

The Sweet Spot groups the original color and five complimentary colors.



83, 5.562, 357.483



99, 1.950, 356.860



83, 8.240, 315.978



53, 1.109, 356.835



0, 0.000, 0.000



53, 0.007, 296.813

Same Dimension

The Same Dimension uses a secret algorithm to generate beautiful new colors.



83, 5.562, 357.483



95, 7.891, 357.662



84, 4.375, 39.218



43, 4.969, 357.811



36, 66.033, 22.116



5, 23.864, 7.688

Inverse Universe

The Inverse Universe completely reimagines the original color for something new.



83, 5.562, 357.483



95, 7.891, 357.662



85, 4.208, 219.784



43, 4.969, 357.811



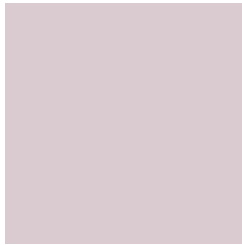
36, 66.033, 22.116



5, 23.864, 7.688

Previews

White Background



This preview shows how the CIELCh color 83, 5.564, 357.470 looks on a white background.

Color Contrast Check

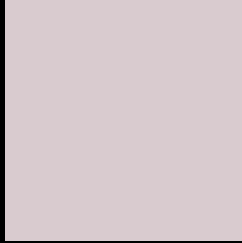
Large Text (above 18pt) WCAG AA × Fail

Any Text WCAG AA × Fail

Large Text (above 18pt) WCAG AAA × Fail

Any Text WCAG AAA × Fail

Black Background



This preview shows how the CIELCh color 83, 5.564, 357.470 looks on a black background.

Color Contrast Check

Large Text (above 18pt) WCAG AA ✓ Pass

Any Text WCAG AA ✓ Pass

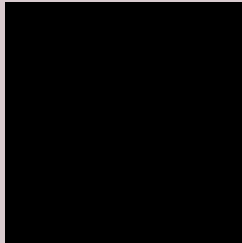
Large Text (above 18pt) WCAG AAA ✓ Pass

Any Text WCAG AAA ✓ Pass

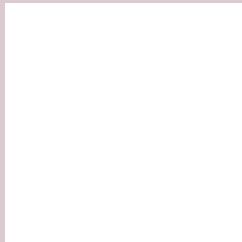
If you want to check with other color combinations, try the [Color Contrast Checker](#).

CIELCh 83, 5.564, 357.470

Background



This preview shows how black text looks on a background with the CIELCh color 83, 5.564, 357.470.



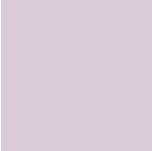
This preview shows how white text looks on a background with the CIELCh color 83, 5.564, 357.470.

Color Blindness Simulation

Color vision deficiency is a very complex topic, and I could not describe the different causes any better than Wikipedia does, so if you want to learn more, you should check out their [article about color blindness](#).

Dichromacy





Tritanopia
83, 10.489, 326.469

Trichromacy



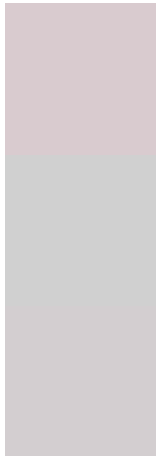
Original Color
83, 5.564, 357.470

Protanomaly
83, 3.336, 351.173

Deuteranomaly
83, 8.905, 355.595

Tritanomaly
83, 8.633, 332.775

Monochromacy



Original Color
83, 5.564, 357.470

Achromatopsia
83, 0.010, 296.813

Achromatomaly
83, 2.118, 349.406

CSS Examples

Text

The CSS property to change the color of the text to CIELCh 83, 5.564, 357.470 is called "color". The color property can be set on classes, ids or directly on the HTML element.

This example shows how text in the color `rgb(217, 203, 207)` looks like.

```
.text, #text, p{  
    color:rgb(217, 203, 207)  
}
```

If you want to add a text shadow in that color use the text-shadow property, you can generate a text shadow directly with our [CSS Text Shadow Generator](#).

Here you see how black text with a 4 pixel rgb(217, 203, 207) colored shadow looks like.

```
.shadow{ text-shadow: 4px 4px 2px rgb(217, 203, 207) }
```

Border

The CSS property to change the border of an element to CIELCh 83, 5.564, 357.470 is called "border". The border property can be set on classes, ids or directly on the HTML element.

This example shows the color as border, it can be applied via the CSS property "border" or "border-color".

```
.border, #border, table{ border:4px solid rgb(217, 203, 207) }
```

If only the border color should be changed use the property `border-color`.

```
.border{ border-color:rgb(217, 203, 207) }
```

If you want to add a box shadow in that color use:

Here you see how a box with a 4 pixel `rgb(217, 203, 207)` colored shadow looks like.

```
.boxshadow{ -moz-box-shadow:4px 4px 4px 4px rgb(217, 203, 207); -webkit-box-shadow:4px 4px 4px 4px rgb(217, 203, 207); box-shadow:4px 4px 4px 4px rgb(217, 203, 207) }
```

Background

The CSS property to change the background color of an element to CIELCh 83, 5.564, 357.470 is called "background". The background property can be set on classes, ids or directly on the HTML element.

```
.background, #background, body{  
background: rgb(217, 203, 207) }
```

If only the background color should be changed can be used:

```
.background{ background-color: rgb(217,  
203, 207) }
```

This example shows the color as background, it is applied via the CSS property "background".

To optimize and compress your CSS code, you can use our [online CSS compressor and optimizer](#) based on csstidy. If you want to create a linear or radial gradient as background or border, check our [CSS Gradient Generator](#).

Hey! You found this booklet interesting? Support Converting Colors with the new Membership Option!

The pro membership hides all ads, plus gives you double the colors in the color bucket, and more awesome pro features!

[Learn more, Memberships starting at \\$2.50/m!](#)

**Follow me
on Twitter!**

@ConvertingColor