

Converting Colors

CIELCh(83, 5.598, 41.102)

Have a look what the booklet for
CIELCh(83, 5.598, 41.102) contains.

CIELCh(83, 5.598, 41.738)	3
<i>Conversions</i>	4
<i>Details</i>	6
<i>Harmonies</i>	11
<i>Previews</i>	20
<i>Color Blindness Simulation</i>	23
<i>CSS Examples</i>	26

Color

CIELCh(83, 5.598, 41.738)

Conversions

Conversions Part 1

Format	Color
Hex	DACCC8
RGB	218, 204, 200
RGB Percent	85%, 80%, 78%
CMY	0.1457, 0.2005, 0.2162
CMYK	0.00, 0.06, 0.08, 0.15
HSL	13°, 19%, 82%
HSV	13°, 8%, 85%
XYZ	60.8362, 62.1629, 63.3476
YIQ	207.7300, 9.6280, 1.7240

Conversions

Conversions Part 2

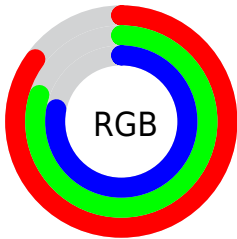
Format	Color
R _Y B	218, 205, 200
Decimal	14339272
CIE Lab	83.00, 4.18, 3.73
CIE LCh	83, 5.598, 41.738
Yxy	62.1629, 0.3265, 0.3336
Android (android.graphics.Color)	4292529352 (0xFFDACCC8)
YUV	207.7300, -3.8109, 9.0068
Hunter-Lab	78.8435, -0.2443, 7.5533

Details

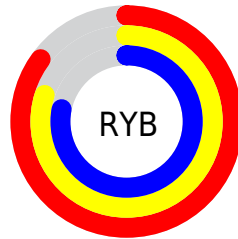
The CIELCh color **83, 5.598, 41.738** is a light color, and the websafe version is hex **CCCCCC**. A complement of this color would be **85, 5.326, 222.534**, and the grayscale version is **83, 0.010, 296.813**.

A 20% lighter version of the original color is **100, 0.012, 296.813**, and **63, 5.592, 43.203** is the 20% darker color. If you saturate the color by 10%, you get **78, 12.889, 41.598**, and if you desaturate by 10%, it is **88, 1.137, 222.676**.

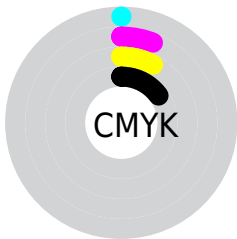
Distribution



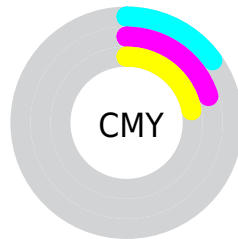
- Red (85%)
- Green (80%)
- Blue (78%)



- Red (85%)
- Yellow (80%)
- Blue (78%)



- Cyan (0%)
- Magenta (6%)
- Yellow (8%)
- Black (15%)



- Cyan (15%)
- Magenta (20%)
- Yellow (22%)

Brightness & Saturation Gradients

These gradients show how the CIELCh color 83, 5.598, 41.738 changes by changing the brightness by 10 percent. The first figure shows a shift by +10% for each color and the second figure -10%.

Similar to the brightness gradients but the following saturation gradients show a change of the CIELCh color 83, 5.598, 41.738 by changing the saturation by 10% instead.

83, 5.598, 41.738

83, 5.598, 41.738

100, 5.598, 41.738

73, 5.598, 41.738

63, 5.598, 41.738

53, 5.598, 41.738

43, 5.598, 41.738

33, 5.598, 41.738

23, 5.598, 41.738

13, 5.598, 41.738

3, 5.598, 41.738

0, 5.598, 41.738

83, 5.598, 41.738

83, 5.598, 41.738

78, 12.889, 41.598

88, 1.137, 222.676

74, 20.792, 41.506

93, 7.369, 222.619

69, 29.344, 41.550

97, 12.385,
199.442

65, 38.554, 41.771

97, 12.496,
198.671

61, 48.377, 42.194

57, 58.666, 42.816

54, 69.068, 43.546

51, 78.775, 44.088

49, 86.366, 43.923

Harmonies

Complementary

The Complementary color scheme is a pair of colors which are on the opposite of each other on the color wheel.



83, 5.598, 41.738



85, 5.326, 222.534

Rectangle

The Rectangle color scheme consists of four colors that form a rectangle on the color wheel.



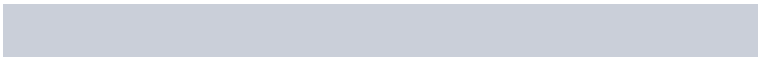
83, 5.598, 41.738



83, 5.598, 91.738



83, 5.598, 221.738



83, 5.598, 271.738

Sweetspot

The Sweet Spot groups the original color and five complimentary colors.



83, 5.597, 41.763



99, 1.500, 41.619



82, 9.952, 331.604



53, 0.852, 41.599



0, 0.000, 0.000



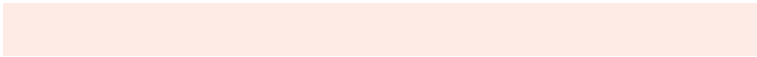
53, 0.007, 296.813

Same Dimension

The Same Dimension uses a secret algorithm to generate beautiful new colors.



83, 5.597, 41.763



95, 7.757, 41.734



85, 6.998, 93.893



44, 3.886, 41.745



38, 73.475, 44.359



7, 20.654, 32.779

Inverse Universe

The Inverse Universe completely reimagines the original color for something new.



85, 5.326, 222.534



97, 7.292, 222.600



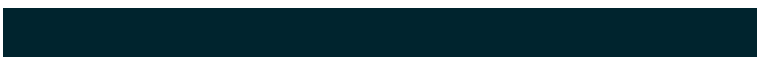
82, 7.032, 275.989



45, 3.669, 222.575



52, 33.353, 240.207



12, 13.131, 231.919

Previews

White Background



This preview shows how the CIELCh color 83, 5.598, 41.738 looks on a white background.

Color Contrast Check

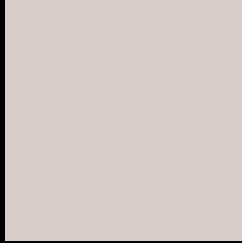
Large Text (above 18pt) WCAG AA × Fail

Any Text WCAG AA × Fail

Large Text (above 18pt) WCAG AAA × Fail

Any Text WCAG AAA × Fail

Black Background



This preview shows how the CIELCh color 83, 5.598, 41.738 looks on a black background.

Color Contrast Check

Large Text (above 18pt) WCAG AA ✓ Pass

Any Text WCAG AA ✓ Pass

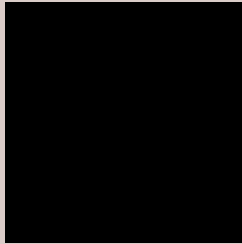
Large Text (above 18pt) WCAG AAA ✓ Pass

Any Text WCAG AAA ✓ Pass

If you want to check with other color combinations, try the [Color Contrast Checker](#).

CIELCh 83, 5.598, 41.738

Background



This preview shows how black text looks on a background with the CIELCh color 83, 5.598, 41.738.

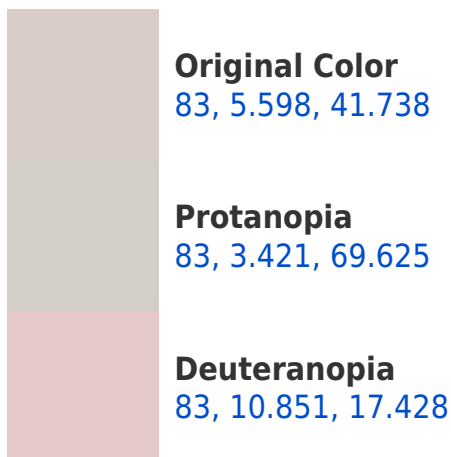


This preview shows how white text looks on a background with the CIELCh color 83, 5.598, 41.738.

Color Blindness Simulation

Color vision deficiency is a very complex topic, and I could not describe the different causes any better than Wikipedia does, so if you want to learn more, you should check out their [article about color blindness](#).

Dichromacy





Tritanopia
83, 10.937, 329.591

Trichromacy



Original Color
83, 5.598, 41.738

Protanomaly
83, 3.920, 51.960

Deuteranomaly
83, 8.944, 20.031

Tritanomaly
83, 7.841, 342.673

Monochromacy



Original Color
83, 5.598, 41.738

Achromatopsia
83, 0.010, 296.813

Achromatomaly
83, 2.252, 32.836

CSS Examples

Text

The CSS property to change the color of the text to CIELCh 83, 5.598, 41.738 is called "color". The color property can be set on classes, ids or directly on the HTML element.

This example shows how text in the color `rgb(218, 204, 200)` looks like.

```
.text, #text, p{  
    color:rgb(218, 204, 200)  
}
```

If you want to add a text shadow in that color use the text-shadow property, you can generate a text shadow directly with our [CSS Text Shadow Generator](#).

Here you see how black text with a 4 pixel rgb(218, 204, 200) colored shadow looks like.

```
.shadow{ text-shadow: 4px 4px 2px rgb(218, 204, 200) }
```

Border

The CSS property to change the border of an element to CIELCh 83, 5.598, 41.738 is called "border". The border property can be set on classes, ids or directly on the HTML element.

This example shows the color as border, it can be applied via the CSS property "border" or "border-color".

```
.border, #border, table{ border:4px solid rgb(218, 204, 200) }
```

If only the border color should be changed use the property `border-color`.

```
.border{ border-color:rgb(218, 204, 200) }
```

If you want to add a box shadow in that color use:

Here you see how a box with a 4 pixel `rgb(218, 204, 200)` colored shadow looks like.

```
.boxshadow{ -moz-box-shadow:4px 4px 4px  
4px rgb(218, 204, 200); -webkit-box-  
shadow:4px 4px 4px 4px rgb(218, 204, 200);  
box-shadow:4px 4px 4px 4px rgb(218, 204,  
200) }
```

Background

The CSS property to change the background color of an element to CIELCh 83, 5.598, 41.738 is called "background". The background property can be set on classes, ids or directly on the HTML element.

```
.background, #background, body{  
background: rgb(218, 204, 200) }
```

If only the background color should be changed can be used:

```
.background{ background-color: rgb(218,  
204, 200) }
```

This example shows the color as background, it is applied via the CSS property "background".

To optimize and compress your CSS code, you can use our [online CSS compressor and optimizer](#) based on csstidy. If you want to create a linear or radial gradient as background or border, check our [CSS Gradient Generator](#).

Hey! You found this booklet interesting? Support Converting Colors with the new Membership Option!

The pro membership hides all ads, plus gives you double the colors in the color bucket, and more awesome pro features!

[Learn more, Memberships starting at \\$2.50/m!](#)

**Follow me
on Twitter!**

@ConvertingColor