

Converting Colors

CIELCh(83, 6.077, 47.122)

Have a look what the booklet for
CIELCh(83, 6.077, 47.122) contains.

CIELCh(83, 5.824, 46.499)	3
<i>Conversions</i>	4
<i>Details</i>	6
<i>Harmonies</i>	11
<i>Previews</i>	20
<i>Color Blindness Simulation</i>	23
<i>CSS Examples</i>	26

Color

CIELCh(83, 5.824, 46.499)

Conversions

Conversions Part 1

Format	Color
Hex	DACCC7
RGB	218, 204, 199
RGB Percent	85%, 80%, 78%
CMY	0.1454, 0.2003, 0.2199
CMYK	0.00, 0.06, 0.09, 0.15
HSL	16°, 20%, 82%
HSV	16°, 9%, 85%
XYZ	60.7650, 62.1629, 62.7827
YIQ	207.6160, 9.9490, 1.4130

Conversions

Conversions Part 2

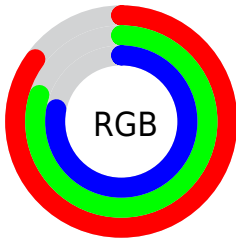
Format	Color
R _Y B	218, 206, 199
Decimal	14339271
CIE Lab	83.00, 4.01, 4.22
CIE LCh	83, 5.824, 46.499
Yxy	62.1629, 0.3272, 0.3347
Android (android.graphics.Color)	4292529351 (0xFFDACCC7)
YUV	207.6160, -4.2477, 9.1068
Hunter-Lab	78.8435, -0.4054, 7.9781

Details

The CIELCh color **83, 5.824, 46.499** is a light color, and the websafe version is hex **CCCCCC**. A complement of this color would be **84, 5.541, 227.649**, and the grayscale version is **83, 0.010, 296.813**.

A 20% lighter version of the original color is **100, 0.012, 296.813**, and **63, 5.848, 48.144** is the 20% darker color. If you saturate the color by 10%, you get **78, 13.009, 46.151**, and if you desaturate by 10%, it is **88, 0.829, 227.785**.

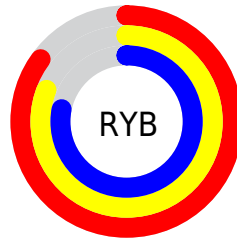
Distribution



Red (85%)

Green (80%)

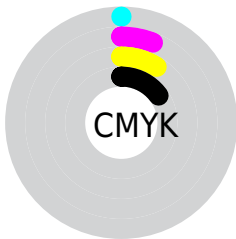
Blue (78%)



Red (85%)

Yellow (81%)

Blue (78%)

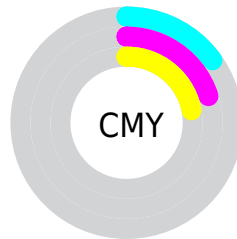


Cyan (0%)

Magenta (6%)

Yellow (9%)

Black (15%)



Cyan (15%)

Magenta (20%)

Yellow (22%)

Brightness & Saturation Gradients

These gradients show how the CIELCh color 83, 5.824, 46.499 changes by changing the brightness by 10 percent. The first figure shows a shift by +10% for each color and the second figure -10%.

Similar to the brightness gradients but the following saturation gradients show a change of the CIELCh color 83, 5.824, 46.499 by changing the saturation by 10% instead.



83, 5.824, 46.499

83, 5.824, 46.499

78, 13.009, 46.151

88, 0.829, 227.785

74, 20.781, 45.834

92, 7.004, 227.734

70, 29.178, 45.629

97, 11.551,
206.187

66, 38.215, 45.565

97, 12.474,
198.673

62, 47.850, 45.661

58, 57.942, 45.898

55, 68.130, 46.174

52, 77.593, 46.189

50, 85.024, 45.505

Harmonies

Complementary

The Complementary color scheme is a pair of colors which are on the opposite of each other on the color wheel.



83, 5.824, 46.499



84, 5.541, 227.649

Rectangle

The Rectangle color scheme consists of four colors that form a rectangle on the color wheel.



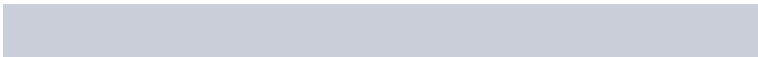
83, 5.824, 46.499



83, 5.824, 96.499



83, 5.824, 226.499



83, 5.824, 276.499

Sweetspot

The Sweet Spot groups the original color and five complimentary colors.



83, 5.823, 46.523



98, 2.225, 46.611



82, 10.262, 332.872



52, 1.692, 46.631



0, 0.000, 0.000



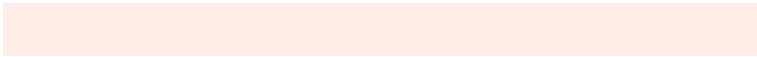
53, 0.007, 296.813

Same Dimension

The Same Dimension uses a secret algorithm to generate beautiful new colors.



83, 5.823, 46.523



95, 7.629, 46.474



85, 7.651, 96.180



44, 3.822, 46.498



39, 72.045, 45.930



8, 20.145, 35.700

Inverse Universe

The Inverse Universe completely reimagines the original color for something new.



84, 5.541, 227.649



97, 7.197, 227.728



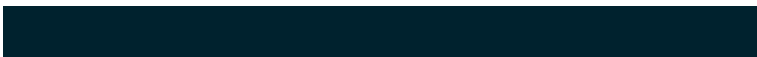
82, 7.708, 278.333



45, 3.620, 227.689



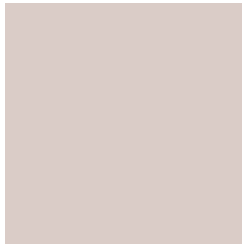
50, 34.756, 248.736



11, 13.352, 239.264

Previews

White Background



This preview shows how the CIELCh color 83, 5.824, 46.499 looks on a white background.

Color Contrast Check

Large Text (above 18pt) WCAG AA × Fail

Any Text WCAG AA × Fail

Large Text (above 18pt) WCAG AAA × Fail

Any Text WCAG AAA × Fail

Black Background



This preview shows how the CIELCh color 83, 5.824, 46.499 looks on a black background.

Color Contrast Check

Large Text (above 18pt) WCAG AA ✓ Pass

Any Text WCAG AA ✓ Pass

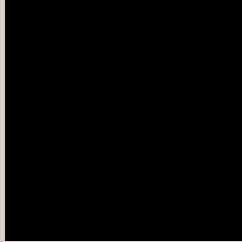
Large Text (above 18pt) WCAG AAA ✓ Pass

Any Text WCAG AAA ✓ Pass

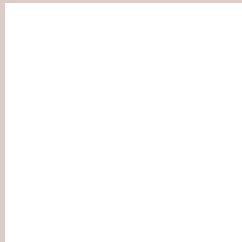
If you want to check with other color combinations, try the [Color Contrast Checker](#).

CIELCh 83, 5.824, 46.499

Background



This preview shows how black text looks on a background with the CIELCh color 83, 5.824, 46.499.

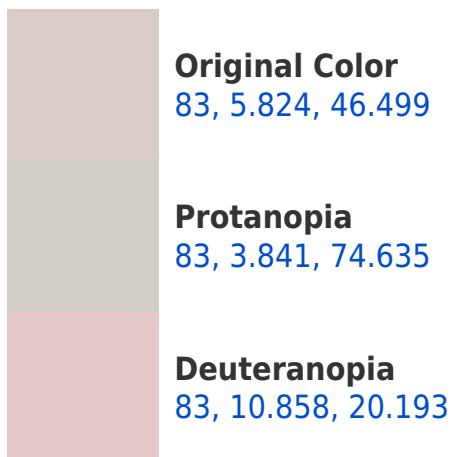


This preview shows how white text looks on a background with the CIELCh color 83, 5.824, 46.499.

Color Blindness Simulation

Color vision deficiency is a very complex topic, and I could not describe the different causes any better than Wikipedia does, so if you want to learn more, you should check out their [article about color blindness](#).

Dichromacy





Tritanopia
83, 10.937, 329.591

Trichromacy



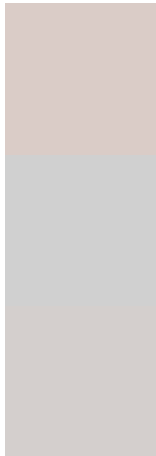
Original Color
83, 5.824, 46.499

Protanomaly
83, 4.229, 57.957

Deuteranomaly
83, 8.976, 23.380

Tritanomaly
83, 7.536, 345.869

Monochromacy



Original Color
83, 5.824, 46.499

Achromatopsia
83, 0.010, 296.813

Achromatomaly
83, 2.098, 49.339

CSS Examples

Text

The CSS property to change the color of the text to CIELCh 83, 5.824, 46.499 is called "color". The color property can be set on classes, ids or directly on the HTML element.

This example shows how text in the color `rgb(218, 204, 199)` looks like.

```
.text, #text, p{  
    color:rgb(218, 204, 199)  
}
```

If you want to add a text shadow in that color use the text-shadow property, you can generate a text shadow directly with our [CSS Text Shadow Generator](#).

Here you see how black text with a 4 pixel rgb(218, 204, 199) colored shadow looks like.

```
.shadow{ text-shadow: 4px 4px 2px rgb(218, 204, 199) }
```

Border

The CSS property to change the border of an element to CIELCh 83, 5.824, 46.499 is called "border". The border property can be set on classes, ids or directly on the HTML element.

This example shows the color as border, it can be applied via the CSS property "border" or "border-color".

```
.border, #border, table{ border:4px solid rgb(218, 204, 199) }
```

If only the border color should be changed use the property `border-color`.

```
.border{ border-color:rgb(218, 204, 199) }
```

If you want to add a box shadow in that color use:

Here you see how a box with a 4 pixel `rgb(218, 204, 199)` colored shadow looks like.

```
.boxshadow{ -moz-box-shadow:4px 4px 4px 4px rgb(218, 204, 199); -webkit-box-shadow:4px 4px 4px 4px rgb(218, 204, 199); box-shadow:4px 4px 4px 4px rgb(218, 204, 199) }
```

Background

The CSS property to change the background color of an element to CIELCh 83, 5.824, 46.499 is called "background". The background property can be set on classes, ids or directly on the HTML element.

```
.background, #background, body{  
background: rgb(218, 204, 199) }
```

If only the background color should be changed can be used:

```
.background{ background-color: rgb(218,  
204, 199) }
```

This example shows the color as background, it is applied via the CSS property "background".

To optimize and compress your CSS code, you can use our [online CSS compressor and optimizer](#) based on csstidy. If you want to create a linear or radial gradient as background or border, check our [CSS Gradient Generator](#).

Hey! You found this booklet interesting? Support Converting Colors with the new Membership Option!

The pro membership hides all ads, plus gives you double the colors in the color bucket, and more awesome pro features!

[Learn more, Memberships starting at \\$2.50/m!](#)

**Follow me
on Twitter!**

@ConvertingColor