

Converting Colors

CIELCh(83, 6.413, 60.554)

Have a look what the booklet for
CIELCh(83, 6.413, 60.554) contains.

CIELCh(83, 6.418, 60.576)	3
<i>Conversions</i>	4
<i>Details</i>	6
<i>Harmonies</i>	11
<i>Previews</i>	20
<i>Color Blindness Simulation</i>	23
<i>CSS Examples</i>	26

Color

CIELCh(83, 6.418, 60.576)

Conversions

Conversions Part 1

Format	Color
Hex	D9CCC4
RGB	217, 204, 196
RGB Percent	85%, 80%, 77%
CMY	0.1476, 0.1986, 0.2300
CMYK	0.00, 0.06, 0.10, 0.15
HSL	23°, 22%, 81%
HSV	23°, 10%, 85%
XYZ	60.4034, 62.1629, 61.2502
YIQ	206.9750, 10.3160, 0.2680

Conversions

Conversions Part 2

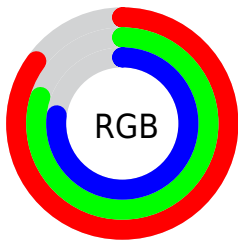
Format	Color
R _Y B	217, 209, 196
Decimal	14273732
CIE Lab	83.00, 3.15, 5.59
CIE LCh	83, 6.418, 60.576
Yxy	62.1629, 0.3286, 0.3382
Android (android.graphics.Color)	4292463812 (0xFFD9CCC4)
YUV	206.9750, -5.4107, 8.7919
Hunter-Lab	78.8435, -1.2241, 9.1305

Details

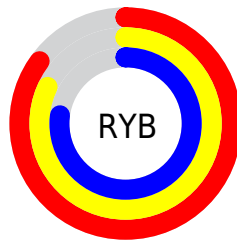
The CIELCh color **83, 6.418, 60.576** is a light color, and the websafe version is hex **CCCCCC**. A complement of this color would be **83, 6.159, 242.702**, and the grayscale version is **83, 0.010, 296.813**.

A 20% lighter version of the original color is **100, 1.003, 110.026**, and **63, 6.533, 62.610** is the 20% darker color. If you saturate the color by 10%, you get **79, 13.499, 59.697**, and if you desaturate by 10%, it is **87, 0.222, 243.822**.

Distribution



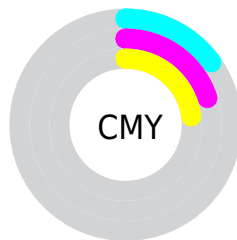
- Red (85%)
- Green (80%)
- Blue (77%)



- Red (85%)
- Yellow (82%)
- Blue (77%)



- Cyan (0%)
- Magenta (6%)
- Yellow (10%)
- Black (15%)



- Cyan (15%)
- Magenta (20%)
- Yellow (23%)

Brightness & Saturation Gradients

These gradients show how the CIELCh color 83, 6.418, 60.576 changes by changing the brightness by 10 percent. The first figure shows a shift by +10% for each color and the second figure -10%.

Similar to the brightness gradients but the following saturation gradients show a change of the CIELCh color 83, 6.418, 60.576 by changing the saturation by 10% instead.



83, 6.418, 60.576

83, 6.418, 60.576

79, 13.499, 59.697

87, 0.222, 243.822

75, 21.062, 58.803

91, 6.469, 242.676

72, 29.141, 57.949

95, 10.482,
229.330

68, 37.739, 57.149

97, 12.655,
198.661

65, 46.807, 56.396

61, 56.177, 55.649

58, 65.448, 54.782

55, 73.779, 53.504

53, 80.235, 51.564

Harmonies

Complementary

The Complementary color scheme is a pair of colors which are on the opposite of each other on the color wheel.



83, 6.418, 60.576



83, 6.159, 242.702

Rectangle

The Rectangle color scheme consists of four colors that form a rectangle on the color wheel.



83, 6.418, 60.576



83, 6.418, 110.576



83, 6.418, 240.576



83, 6.418, 290.576

Sweetspot

The Sweet Spot groups the original color and five complimentary colors.



83, 6.418, 60.599



99, 2.216, 61.063



81, 10.453, 337.783



52, 1.685, 61.038



0, 0.000, 0.000



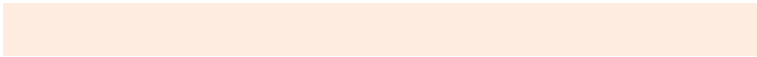
53, 0.007, 296.813

Same Dimension

The Same Dimension uses a secret algorithm to generate beautiful new colors.



83, 6.418, 60.599



95, 9.145, 60.382



86, 9.567, 103.083



44, 3.795, 60.618



43, 67.617, 52.100



9, 18.849, 46.557

Inverse Universe

The Inverse Universe completely reimagines the original color for something new.



83, 6.159, 242.702



95, 8.673, 242.979



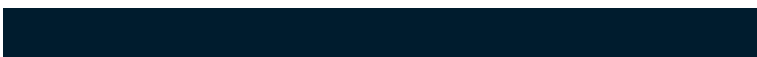
81, 9.722, 285.244



44, 3.645, 242.677



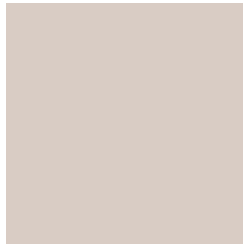
44, 42.344, 269.397



9, 15.071, 258.699

Previews

White Background



This preview shows how the CIELCh color 83, 6.418, 60.576 looks on a white background.

Color Contrast Check

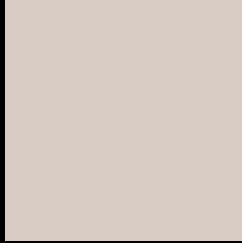
Large Text (above 18pt) WCAG AA × Fail

Any Text WCAG AA × Fail

Large Text (above 18pt) WCAG AAA × Fail

Any Text WCAG AAA × Fail

Black Background



This preview shows how the CIE LCh color 83, 6.418, 60.576 looks on a black background.

Color Contrast Check

Large Text (above 18pt) WCAG AA ✓ Pass

Any Text WCAG AA ✓ Pass

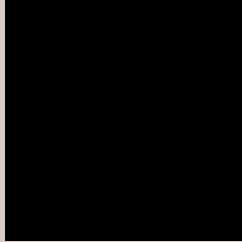
Large Text (above 18pt) WCAG AAA ✓ Pass

Any Text WCAG AAA ✓ Pass

If you want to check with other color combinations, try the [Color Contrast Checker](#).

CIELCh 83, 6.418, 60.576

Background



This preview shows how black text looks on a background with the CIELCh color 83, 6.418, 60.576.

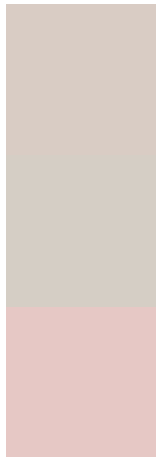


This preview shows how white text looks on a background with the CIELCh color 83, 6.418, 60.576.

Color Blindness Simulation

Color vision deficiency is a very complex topic, and I could not describe the different causes any better than Wikipedia does, so if you want to learn more, you should check out their [article about color blindness](#).

Dichromacy



Original Color

83, 6.418, 60.576

Protanopia

83, 5.389, 80.865

Deuteranopia

83, 11.416, 28.126



Tritanopia
83, 10.937, 329.591

Trichromacy



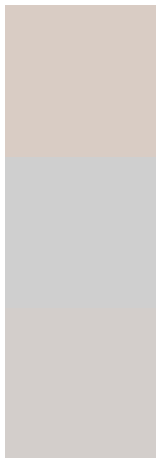
Original Color
83, 6.418, 60.576

Protanomaly
83, 5.606, 68.153

Deuteranomaly
83, 9.027, 36.866

Tritanomaly
83, 7.258, 349.326

Monochromacy



Original Color
83, 6.418, 60.576

Achromatopsia
83, 0.010, 296.813

Achromatomaly
83, 2.406, 60.294

CSS Examples

Text

The CSS property to change the color of the text to CIELCh 83, 6.418, 60.576 is called "color". The color property can be set on classes, ids or directly on the HTML element.

This example shows how text in the color `rgb(217, 204, 196)` looks like.

```
.text, #text, p{  
    color:rgb(217, 204, 196)  
}
```

If you want to add a text shadow in that color use the text-shadow property, you can generate a text shadow directly with our [CSS Text Shadow Generator](#).

Here you see how black text with a 4 pixel rgb(217, 204, 196) colored shadow looks like.

```
.shadow{ text-shadow: 4px 4px 2px rgb(217, 204, 196) }
```

Border

The CSS property to change the border of an element to CIELCh 83, 6.418, 60.576 is called "border". The border property can be set on classes, ids or directly on the HTML element.

This example shows the color as border, it can be applied via the CSS property "border" or "border-color".

```
.border, #border, table{ border:4px solid rgb(217, 204, 196) }
```

If only the border color should be changed use the property `border-color`.

```
.border{ border-color:rgb(217, 204, 196) }
```

If you want to add a box shadow in that color use:

Here you see how a box with a 4 pixel `rgb(217, 204, 196)` colored shadow looks like.

```
.boxshadow{ -moz-box-shadow:4px 4px 4px  
4px rgb(217, 204, 196); -webkit-box-  
shadow:4px 4px 4px 4px rgb(217, 204, 196);  
box-shadow:4px 4px 4px 4px rgb(217, 204,  
196) }
```

Background

The CSS property to change the background color of an element to CIELCh 83, 6.418, 60.576 is called "background". The background property can be set on classes, ids or directly on the HTML element.

```
.background, #background, body{  
background: rgb(217, 204, 196) }
```

If only the background color should be changed can be used:

```
.background{ background-color: rgb(217,  
204, 196) }
```

This example shows the color as background, it is applied via the CSS property "background".

To optimize and compress your CSS code, you can use our [online CSS compressor and optimizer](#) based on csstidy. If you want to create a linear or radial gradient as background or border, check our [CSS Gradient Generator](#).

Hey! You found this booklet interesting? Support Converting Colors with the new Membership Option!

The pro membership hides all ads, plus gives you double the colors in the color bucket, and more awesome pro features!

[Learn more, Memberships starting at \\$2.50/m!](#)

**Follow me
on Twitter!**

@ConvertingColor