

Converting Colors

CIELCh(83, 6.501, 19.795)

Have a look what the booklet for
CIELCh(83, 6.501, 19.795) contains.

CIELCh(83, 6.289, 19.795)	3
<i>Conversions</i>	4
<i>Details</i>	6
<i>Harmonies</i>	11
<i>Previews</i>	20
<i>Color Blindness Simulation</i>	23
<i>CSS Examples</i>	26

Color

CIELCh(83, 6.289, 19.795)

Conversions

Conversions Part 1

Format	Color
Hex	DCCBCB
RGB	220, 203, 203
RGB Percent	86%, 80%, 80%
CMY	0.1377, 0.2043, 0.2044
CMYK	0.00, 0.08, 0.08, 0.14
HSL	0°, 19%, 83%
HSV	0°, 8%, 86%
XYZ	61.5762, 62.1629, 65.1827
YIQ	208.0830, 10.1320, 3.6040

Conversions

Conversions Part 2

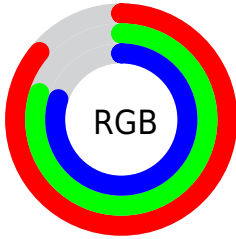
Format	Color
R _Y B	220, 203, 203
Decimal	14470091
CIE Lab	83.00, 5.92, 2.13
CIE LCh	83, 6.289, 19.795
Yxy	62.1629, 0.3259, 0.3290
Android (android.graphics.Color)	4292660171 (0xFFDCCBCB)
YUV	208.0830, -2.5059, 10.4512
Hunter-Lab	78.8435, 1.4312, 6.1733

Details

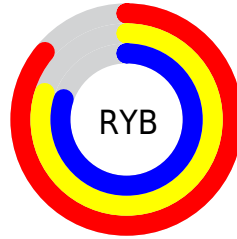
The CIELCh color **83, 6.289, 19.795** is a light color, and the websafe version is hex **CCCCCC**. A complement of this color would be **86, 5.989, 199.099**, and the grayscale version is **83, 0.010, 296.813**.

A 20% lighter version of the original color is **100, 0.012, 296.813**, and **63, 6.288, 19.937** is the 20% darker color. If you saturate the color by 10%, you get **77, 15.001, 20.642**, and if you desaturate by 10%, it is **89, 1.772, 199.640**.

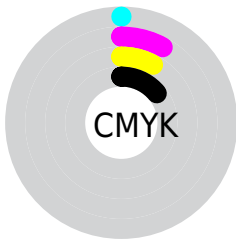
Distribution



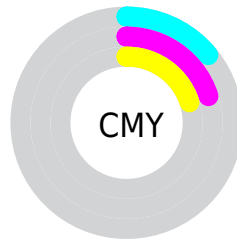
- Red (86%)
- Green (80%)
- Blue (80%)



- Red (86%)
- Yellow (80%)
- Blue (80%)



- Cyan (0%)
- Magenta (8%)
- Yellow (8%)
- Black (14%)



- Cyan (14%)
- Magenta (20%)
- Yellow (20%)

Brightness & Saturation Gradients

These gradients show how the CIELCh color 83, 6.289, 19.795 changes by changing the brightness by 10 percent. The first figure shows a shift by +10% for each color and the second figure -10%.

Similar to the brightness gradients but the following saturation gradients show a change of the CIELCh color 83, 6.289, 19.795 by changing the saturation by 10% instead.



83, 6.289, 19.795

83, 6.289, 19.795

77, 15.001, 20.642

89, 1.772, 199.640

71, 24.386, 21.663

95, 9.223, 198.897

66, 34.405, 22.986

98, 11.839,
198.715

61, 44.943, 24.714

56, 55.784, 26.960

52, 66.604, 29.810

49, 76.947, 33.216

47, 86.021, 36.767

46, 92.262, 39.452

Harmonies

Complementary

The Complementary color scheme is a pair of colors which are on the opposite of each other on the color wheel.



83, 6.289, 19.795



86, 5.989, 199.099

Rectangle

The Rectangle color scheme consists of four colors that form a rectangle on the color wheel.



83, 6.289, 19.795



83, 6.289, 69.795



83, 6.289, 199.795



83, 6.289, 249.795

Sweetspot

The Sweet Spot groups the original color and five complimentary colors.



83, 6.287, 19.813



99, 1.794, 19.176



83, 10.909, 324.840



53, 1.020, 19.151



0, 0.000, 0.000



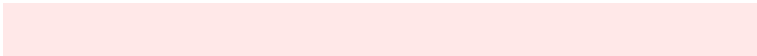
53, 0.007, 296.813

Same Dimension

The Same Dimension uses a secret algorithm to generate beautiful new colors.



83, 6.287, 19.813



94, 8.298, 19.920



85, 5.432, 74.407



43, 4.638, 19.949



36, 78.232, 39.931



5, 23.837, 20.279

Inverse Universe

The Inverse Universe completely reimagines the original color for something new.



86, 5.989, 199.099



98, 7.837, 199.013



84, 5.341, 256.484



45, 4.370, 198.991



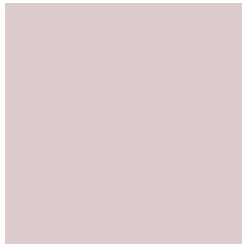
64, 37.520, 196.420



16, 15.070, 196.414

Previews

White Background



This preview shows how the CIELCh color 83, 6.289, 19.795 looks on a white background.

Color Contrast Check

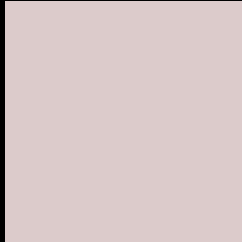
Large Text (above 18pt) WCAG AA × Fail

Any Text WCAG AA × Fail

Large Text (above 18pt) WCAG AAA × Fail

Any Text WCAG AAA × Fail

Black Background



This preview shows how the CIE LCh color 83, 6.289, 19.795 looks on a black background.

Color Contrast Check

Large Text (above 18pt) WCAG AA ✓ Pass

Any Text WCAG AA ✓ Pass

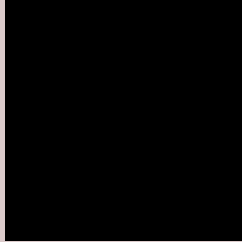
Large Text (above 18pt) WCAG AAA ✓ Pass

Any Text WCAG AAA ✓ Pass

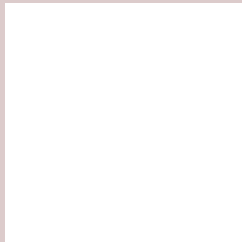
If you want to check with other color combinations, try the [Color Contrast Checker](#).

CIELCh 83, 6.289, 19.795

Background



This preview shows how black text looks on a background with the CIELCh color 83, 6.289, 19.795.



This preview shows how white text looks on a background with the CIELCh color 83, 6.289, 19.795.

Color Blindness Simulation

Color vision deficiency is a very complex topic, and I could not describe the different causes any better than Wikipedia does, so if you want to learn more, you should check out their [article about color blindness](#).

Dichromacy



Original Color

83, 6.289, 19.795

Protanopia

83, 1.896, 35.368

Deuteranopia

83, 10.539, 11.587



Tritanopia
83, 11.406, 332.475

Trichromacy



Original Color
83, 6.289, 19.795

Protanomaly
83, 3.343, 28.543

Deuteranomaly
83, 8.976, 13.321

Tritanomaly
83, 8.738, 342.911

Monochromacy



Original Color
83, 6.289, 19.795

Achromatopsia
83, 0.010, 296.813

Achromatomaly
83, 2.193, 19.313

CSS Examples

Text

The CSS property to change the color of the text to CIELCh 83, 6.289, 19.795 is called "color". The color property can be set on classes, ids or directly on the HTML element.

This example shows how text in the color `rgb(220, 203, 203)` looks like.

```
.text, #text, p{  
    color:rgb(220, 203, 203)  
}
```

If you want to add a text shadow in that color use the text-shadow property, you can generate a text shadow directly with our [CSS Text Shadow Generator](#).

Here you see how black text with a 4 pixel rgb(220, 203, 203) colored shadow looks like.

```
.shadow{ text-shadow: 4px 4px 2px rgb(220, 203, 203) }
```

Border

The CSS property to change the border of an element to CIELCh 83, 6.289, 19.795 is called "border". The border property can be set on classes, ids or directly on the HTML element.

This example shows the color as border, it can be applied via the CSS property "border" or "border-color".

```
.border, #border, table{ border:4px solid rgb(220, 203, 203) }
```

If only the border color should be changed use the property `border-color`.

```
.border{ border-color:rgb(220, 203, 203) }
```

If you want to add a box shadow in that color use:

Here you see how a box with a 4 pixel `rgb(220, 203, 203)` colored shadow looks like.

```
.boxshadow{ -moz-box-shadow:4px 4px 4px  
4px rgb(220, 203, 203); -webkit-box-  
shadow:4px 4px 4px 4px rgb(220, 203, 203);  
box-shadow:4px 4px 4px 4px rgb(220, 203,  
203) }
```

Background

The CSS property to change the background color of an element to CIELCh 83, 6.289, 19.795 is called "background". The background property can be set on classes, ids or directly on the HTML element.

```
.background, #background, body{  
background: rgb(220, 203, 203) }
```

If only the background color should be changed can be used:

```
.background{ background-color: rgb(220,  
203, 203) }
```

This example shows the color as background, it is applied via the CSS property "background".

To optimize and compress your CSS code, you can use our [online CSS compressor and optimizer](#) based on csstidy. If you want to create a linear or radial gradient as background or border, check our [CSS Gradient Generator](#).

Hey! You found this booklet interesting? Support Converting Colors with the new Membership Option!

The pro membership hides all ads, plus gives you double the colors in the color bucket, and more awesome pro features!

[Learn more, Memberships starting at \\$2.50/m!](#)

**Follow me
on Twitter!**

@ConvertingColor