

Converting Colors

CIELCh(83, 7.009, 353.047)

Have a look what the booklet for
CIELCh(83, 7.009, 353.047) contains.

CIELCh(83, 7.009, 353.047)	3
<i>Conversions</i>	4
<i>Details</i>	6
<i>Harmonies</i>	12
<i>Previews</i>	21
<i>Color Blindness Simulation</i>	24
<i>CSS Examples</i>	27

Color

CIELCh(83, 7.009, 353.047)

Conversions

Conversions Part 1

Format	Color
Hex	DBCAD0
RGB	219, 202, 208
RGB Percent	86%, 79%, 82%
CMY	0.1394, 0.2060, 0.1825
CMYK	0.00, 0.08, 0.05, 0.14
HSL	339°, 19%, 83%
HSV	339°, 8%, 86%
XYZ	62.0214, 62.1629, 68.6993
YIQ	207.7670, 8.2060, 5.4700

Conversions

Conversions Part 2

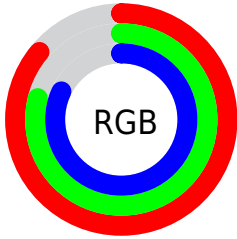
Format	Color
R _Y B	219, 202, 208
Decimal	14404304
CIE Lab	83.00, 6.96, -0.85
CIE LCh	83, 7.009, 353.047
Yxy	62.1629, 0.3215, 0.3223
Android (android.graphics.Color)	4292594384 (0xFFDBCAD0)
YUV	207.7670, 0.1149, 9.8513
Hunter-Lab	78.8435, 2.4390, 3.5289

Details

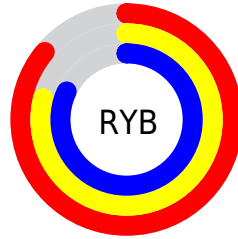
The CIELCh color `83, 7.009, 353.047` is a light color, and the websafe version is hex `CCCCCC`. A complement of this color would be `86, 6.875, 171.776`, and the grayscale version is `84, 0.010, 296.813`.

A 20% lighter version of the original color is `100, 0.012, 296.813`, and `63, 7.072, 351.808` is the 20% darker color. If you saturate the color by 10%, you get `77, 16.327, 354.132`, and if you desaturate by 10%, it is `89, 1.989, 172.462`.

Distribution



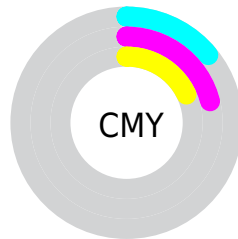
- Red (86%)
- Green (79%)
- Blue (82%)



- Red (86%)
- Yellow (79%)
- Blue (82%)



- Cyan (0%)
- Magenta (8%)
- Yellow (5%)
- Black (14%)



- Cyan (14%)
- Magenta (21%)
- Yellow (18%)

Brightness & Saturation Gradients

These gradients show how the CIELCh color 83, 7.009, 353.047 changes by changing the brightness by 10 percent. The first figure shows a shift by +10% for each color and the second figure -10%.

Similar to the brightness gradients but the following saturation gradients show a change of the CIELCh color 83, 7.009, 353.047 by changing the saturation by 10% instead.

■ 83, 7.009, 353.047

■ 83, 7.009, 353.047

■ 100, 7.009,
353.047

■ 73, 7.009, 353.047

■ 63, 7.009, 353.047

■ 53, 7.009, 353.047

■ 43, 7.009, 353.047

■ 33, 7.009, 353.047

■ 23, 7.009, 353.047

■ 13, 7.009, 353.047

■ 3, 7.009, 353.047

■ 0, 7.009, 353.047

83, 7.009, 353.047

83, 7.009, 353.047

77, 16.327,
354.132

89, 1.989, 172.462

72, 25.881,
355.338

95, 10.622,
171.449

66, 35.506,
356.750

97, 12.270,
189.231

61, 44.941,
358.443

98, 11.976,
198.706

57, 53.816, 0.523

53, 61.679, 3.132

50, 68.095, 6.442

48, 72.828, 10.625

47, 76.104, 15.722

Harmonies

Complementary

The Complementary color scheme is a pair of colors which are on the opposite of each other on the color wheel.



83, 7.009, 353.047



86, 6.875, 171.776

Rectangle

The Rectangle color scheme consists of four colors that form a rectangle on the color wheel.



83, 7.009, 353.047



83, 7.009, 43.047



83, 7.009, 173.047



83, 7.009, 223.047

Sweetspot

The Sweet Spot groups the original color and five complimentary colors.



83, 7.007, 353.056



99, 2.025, 352.318



83, 9.837, 313.889



53, 1.151, 352.295



0, 0.000, 0.000



53, 0.007, 296.813

Same Dimension

The Same Dimension uses a secret algorithm to generate beautiful new colors.



83, 7.007, 353.056



94, 9.214, 353.196



83, 5.576, 32.036



43, 5.146, 353.234



36, 64.215, 15.927



6, 24.070, 4.043

Inverse Universe

The Inverse Universe completely reimagines the original color for something new.



83, 7.007, 353.056



94, 9.214, 353.196



86, 5.307, 212.139



43, 5.146, 353.234



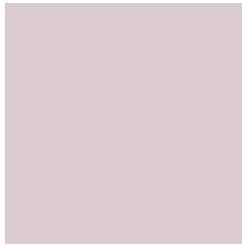
36, 64.215, 15.927



6, 24.070, 4.043

Previews

White Background



This preview shows how the CIELCh color 83, 7.009, 353.047 looks on a white background.

Color Contrast Check

Large Text (above 18pt) WCAG AA × Fail

Any Text WCAG AA × Fail

Large Text (above 18pt) WCAG AAA × Fail

Any Text WCAG AAA × Fail

Black Background



This preview shows how the CIELCh color 83, 7.009, 353.047 looks on a black background.

Color Contrast Check

Large Text (above 18pt) WCAG AA ✓ Pass

Any Text WCAG AA ✓ Pass

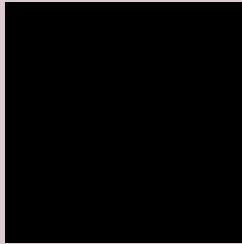
Large Text (above 18pt) WCAG AAA ✓ Pass

Any Text WCAG AAA ✓ Pass

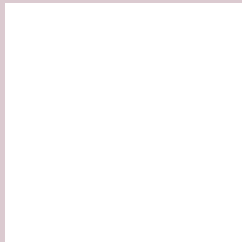
If you want to check with other color combinations, try the [Color Contrast Checker](#).

CIELCh 83, 7.009, 353.047

Background



This preview shows how black text looks on a background with the CIELCh color 83, 7.009, 353.047.



This preview shows how white text looks on a background with the CIELCh color 83, 7.009, 353.047.

Color Blindness Simulation

Color vision deficiency is a very complex topic, and I could not describe the different causes any better than Wikipedia does, so if you want to learn more, you should check out their [article about color blindness](#).

Dichromacy



Original Color

83, 7.009, 353.047

Protanopia

83, 2.396, 317.291

Deuteranopia

83, 10.687, 353.891



Tritanopia
83, 11.168, 331.062

Trichromacy



Original Color
83, 7.009, 353.047

Protanomaly
83, 3.619, 343.840

Deuteranomaly
83, 9.458, 353.649

Tritanomaly
83, 9.140, 336.201

Monochromacy



Original Color
83, 7.009, 353.047

Achromatopsia
83, 0.010, 296.813

Achromatomaly
83, 2.441, 353.750

CSS Examples

Text

The CSS property to change the color of the text to CIELCh 83, 7.009, 353.047 is called "color". The color property can be set on classes, ids or directly on the HTML element.

This example shows how text in the color `rgb(219, 202, 208)` looks like.

```
.text, #text, p{  
    color:rgb(219, 202, 208)  
}
```

If you want to add a text shadow in that color use the text-shadow property, you can generate a text shadow directly with our [CSS Text Shadow Generator](#).

Here you see how black text with a 4 pixel rgb(219, 202, 208) colored shadow looks like.

```
.shadow{ text-shadow: 4px 4px 2px rgb(219, 202, 208) }
```

Border

The CSS property to change the border of an element to CIELCh 83, 7.009, 353.047 is called "border". The border property can be set on classes, ids or directly on the HTML element.

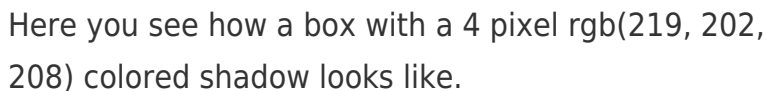
This example shows the color as border, it can be applied via the CSS property "border" or "border-color".

```
.border, #border, table{ border:4px solid rgb(219, 202, 208) }
```

If only the border color should be changed use the property `border-color`.

```
.border{ border-color:rgb(219, 202, 208) }
```

If you want to add a box shadow in that color use:



Here you see how a box with a 4 pixel `rgb(219, 202, 208)` colored shadow looks like.

```
.boxshadow{ -moz-box-shadow:4px 4px 4px 4px rgb(219, 202, 208); -webkit-box-shadow:4px 4px 4px 4px rgb(219, 202, 208); box-shadow:4px 4px 4px 4px rgb(219, 202, 208) }
```

Background

The CSS property to change the background color of an element to CIELCh 83, 7.009, 353.047 is called "background". The background property can be set on classes, ids or directly on the HTML element.

```
.background, #background, body{  
background: rgb(219, 202, 208) }
```

If only the background color should be changed can be used:

```
.background{ background-color: rgb(219,  
202, 208) }
```

This example shows the color as background, it is applied via the CSS property "background".

To optimize and compress your CSS code, you can use our [online CSS compressor and optimizer](#) based on csstidy. If you want to create a linear or radial gradient as background or border, check our [CSS Gradient Generator](#).

Hey! You found this booklet interesting? Support Converting Colors with the new Membership Option!

The pro membership hides all ads, plus gives you double the colors in the color bucket, and more awesome pro features!

[Learn more, Memberships starting at \\$2.50/m!](#)

**Follow me
on Twitter!**

@ConvertingColor