

Converting Colors

CIELCh(83, 7.425, 46.808)

Have a look what the booklet for
CIELCh(83, 7.425, 46.808) contains.

CIELCh(83, 7.435, 44.886)	3
<i>Conversions</i>	4
<i>Details</i>	6
<i>Harmonies</i>	11
<i>Previews</i>	20
<i>Color Blindness Simulation</i>	23
<i>CSS Examples</i>	26

Color

CIELCh(83, 7.435, 44.886)

Conversions

Conversions Part 1

Format	Color
Hex	DDCBC5
RGB	221, 203, 197
RGB Percent	87%, 80%, 77%
CMY	0.1330, 0.2036, 0.2272
CMYK	0.00, 0.08, 0.11, 0.13
HSL	15°, 26%, 82%
HSV	15°, 11%, 87%
XYZ	61.2993, 62.1629, 61.6330
YIQ	207.6980, 12.6540, 1.9500

Conversions

Conversions Part 2

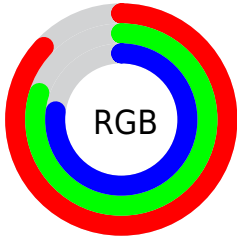
Format	Color
R _Y B	221, 205, 197
Decimal	14535621
CIE Lab	83.00, 5.27, 5.25
CIE LCh	83, 7.435, 44.886
Yxy	62.1629, 0.3312, 0.3358
Android (android.graphics.Color)	4292725701 (0xFFDDCBC5)
YUV	207.6980, -5.2741, 11.6659
Hunter-Lab	78.8435, 0.8042, 8.8426

Details

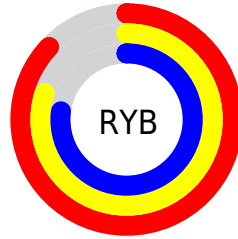
The CIELCh color $83, 7.435, 44.886$ is a light color, and the websafe version is hex `CCCCCC`. A complement of this color would be $85, 6.970, 226.102$, and the grayscale version is $83, 0.010, 296.813$.

A 20% lighter version of the original color is $100, 0.496, 109.985$, and $63, 7.568, 46.053$ is the 20% darker color. If you saturate the color by 10%, you get $78, 14.869, 44.603$, and if you desaturate by 10%, it is $88, 0.561, 44.389$.

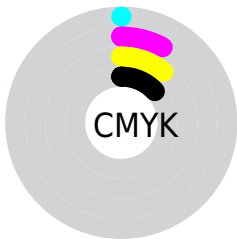
Distribution



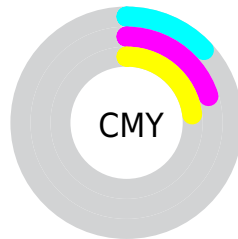
- Red (87%)
- Green (80%)
- Blue (77%)



- Red (87%)
- Yellow (80%)
- Blue (77%)



- Cyan (0%)
- Magenta (8%)
- Yellow (11%)
- Black (13%)



- Cyan (13%)
- Magenta (20%)
- Yellow (23%)

Brightness & Saturation Gradients

These gradients show how the CIELCh color 83, 7.435, 44.886 changes by changing the brightness by 10 percent. The first figure shows a shift by +10% for each color and the second figure -10%.

Similar to the brightness gradients but the following saturation gradients show a change of the CIELCh color 83, 7.435, 44.886 by changing the saturation by 10% instead.

 83, 7.435, 44.886

 83, 7.435, 44.886

 100, 7.435, 44.886

 73, 7.435, 44.886

 63, 7.435, 44.886

 53, 7.435, 44.886

 43, 7.435, 44.886

 33, 7.435, 44.886

 23, 7.435, 44.886

 13, 7.435, 44.886

 3, 7.435, 44.886

 0, 7.435, 44.886

83, 7.435, 44.886

83, 7.435, 44.886

78, 14.869, 44.603

88, 0.561, 44.389

74, 22.917, 44.383

93, 5.807, 225.976

69, 31.612, 44.290

97, 10.744,
204.812

65, 40.959, 44.357

98, 11.455,
198.741

61, 50.897, 44.598

58, 61.245, 44.986

54, 71.559, 45.388

52, 80.849, 45.435

50, 87.450, 44.918

Harmonies

Complementary

The Complementary color scheme is a pair of colors which are on the opposite of each other on the color wheel.



83, 7.435, 44.886



85, 6.970, 226.102

Rectangle

The Rectangle color scheme consists of four colors that form a rectangle on the color wheel.



83, 7.435, 44.886



83, 7.435, 94.886



83, 7.435, 224.886



83, 7.435, 274.886

Sweetspot

The Sweet Spot groups the original color and five complimentary colors.



83, 7.434, 44.905



98, 2.234, 45.022



82, 12.949, 333.022



52, 1.700, 45.047



0, 0.000, 0.000



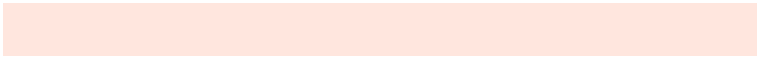
53, 0.007, 296.813

Same Dimension

The Same Dimension uses a secret algorithm to generate beautiful new colors.



83, 7.434, 44.905



93, 10.085, 44.835



86, 9.655, 95.928



44, 3.840, 44.949



39, 72.518, 45.392



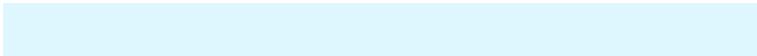
7, 20.310, 34.707

Inverse Universe

The Inverse Universe completely reimagines the original color for something new.



85, 6.970, 226.102



96, 9.318, 226.235



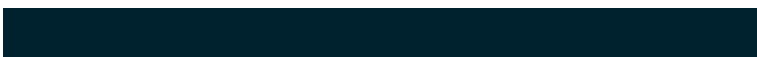
82, 9.735, 278.616



45, 3.633, 226.026



51, 34.226, 246.042



12, 13.259, 236.909

Previews

White Background



This preview shows how the CIELCh color 83, 7.435, 44.886 looks on a white background.

Color Contrast Check

Large Text (above 18pt) WCAG AA × Fail

Any Text WCAG AA × Fail

Large Text (above 18pt) WCAG AAA × Fail

Any Text WCAG AAA × Fail

Black Background



This preview shows how the CIELCh color 83, 7.435, 44.886 looks on a black background.

Color Contrast Check

Large Text (above 18pt) WCAG AA ✓ Pass

Any Text WCAG AA ✓ Pass

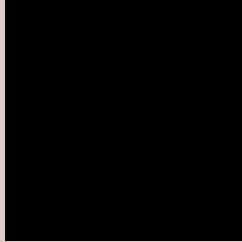
Large Text (above 18pt) WCAG AAA ✓ Pass

Any Text WCAG AAA ✓ Pass

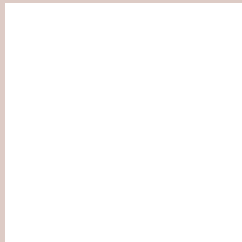
If you want to check with other color combinations, try the [Color Contrast Checker](#).

CIELCh 83, 7.435, 44.886

Background



This preview shows how black text looks on a background with the CIELCh color 83, 7.435, 44.886.



This preview shows how white text looks on a background with the CIELCh color 83, 7.435, 44.886.

Color Blindness Simulation

Color vision deficiency is a very complex topic, and I could not describe the different causes any better than Wikipedia does, so if you want to learn more, you should check out their [article about color blindness](#).

Dichromacy



Original Color

83, 7.435, 44.886

Protanopia

83, 4.285, 78.623

Deuteranopia

83, 11.333, 25.522



Tritanopia
83, 12.171, 336.396

Trichromacy



Original Color
83, 7.435, 44.886

Protanomaly
83, 5.218, 64.396

Deuteranomaly
83, 9.886, 29.239

Tritanomaly
83, 9.128, 352.572

Monochromacy



Original Color
83, 7.435, 44.886

Achromatopsia
83, 0.010, 296.813

Achromatomaly
83, 2.765, 41.751

CSS Examples

Text

The CSS property to change the color of the text to CIELCh 83, 7.435, 44.886 is called "color". The color property can be set on classes, ids or directly on the HTML element.

This example shows how text in the color `rgb(221, 203, 197)` looks like.

```
.text, #text, p{  
    color:rgb(221, 203, 197)  
}
```

If you want to add a text shadow in that color use the text-shadow property, you can generate a text shadow directly with our [CSS Text Shadow Generator](#).

Here you see how black text with a 4 pixel rgb(221, 203, 197) colored shadow looks like.

```
.shadow{ text-shadow: 4px 4px 2px rgb(221, 203, 197) }
```

Border

The CSS property to change the border of an element to CIELCh 83, 7.435, 44.886 is called "border". The border property can be set on classes, ids or directly on the HTML element.

This example shows the color as border, it can be applied via the CSS property "border" or "border-color".

```
.border, #border, table{ border:4px solid rgb(221, 203, 197) }
```

If only the border color should be changed use the property `border-color`.

```
.border{ border-color:rgb(221, 203, 197) }
```

If you want to add a box shadow in that color use:

Here you see how a box with a 4 pixel `rgb(221, 203, 197)` colored shadow looks like.

```
.boxshadow{ -moz-box-shadow:4px 4px 4px 4px rgb(221, 203, 197); -webkit-box-shadow:4px 4px 4px 4px rgb(221, 203, 197); box-shadow:4px 4px 4px 4px rgb(221, 203, 197) }
```

Background

The CSS property to change the background color of an element to CIELCh 83, 7.435, 44.886 is called "background". The background property can be set on classes, ids or directly on the HTML element.

```
.background, #background, body{  
background: rgb(221, 203, 197) }
```

If only the background color should be changed can be used:

```
.background{ background-color: rgb(221,  
203, 197) }
```

This example shows the color as background, it is applied via the CSS property "background".

To optimize and compress your CSS code, you can use our [online CSS compressor and optimizer](#) based on csstidy. If you want to create a linear or radial gradient as background or border, check our [CSS Gradient Generator](#).

Hey! You found this booklet interesting? Support Converting Colors with the new Membership Option!

The pro membership hides all ads, plus gives you double the colors in the color bucket, and more awesome pro features!

[Learn more, Memberships starting at \\$2.50/m!](#)

**Follow me
on Twitter!**

@ConvertingColor